

DAKB 574005

GENERAL NOTE

CONCRETE

Storm Sewer Inlets shall be constructed of either Class A Concrete or Class A Concrete (A.E.) at the Contractor's option. However, payment shall be made for cubic yards of Class A concrete (Miscellaneous). Bevel all exposed 90° concrete edges with a 3/4" triangular bevel.

CAST IRON

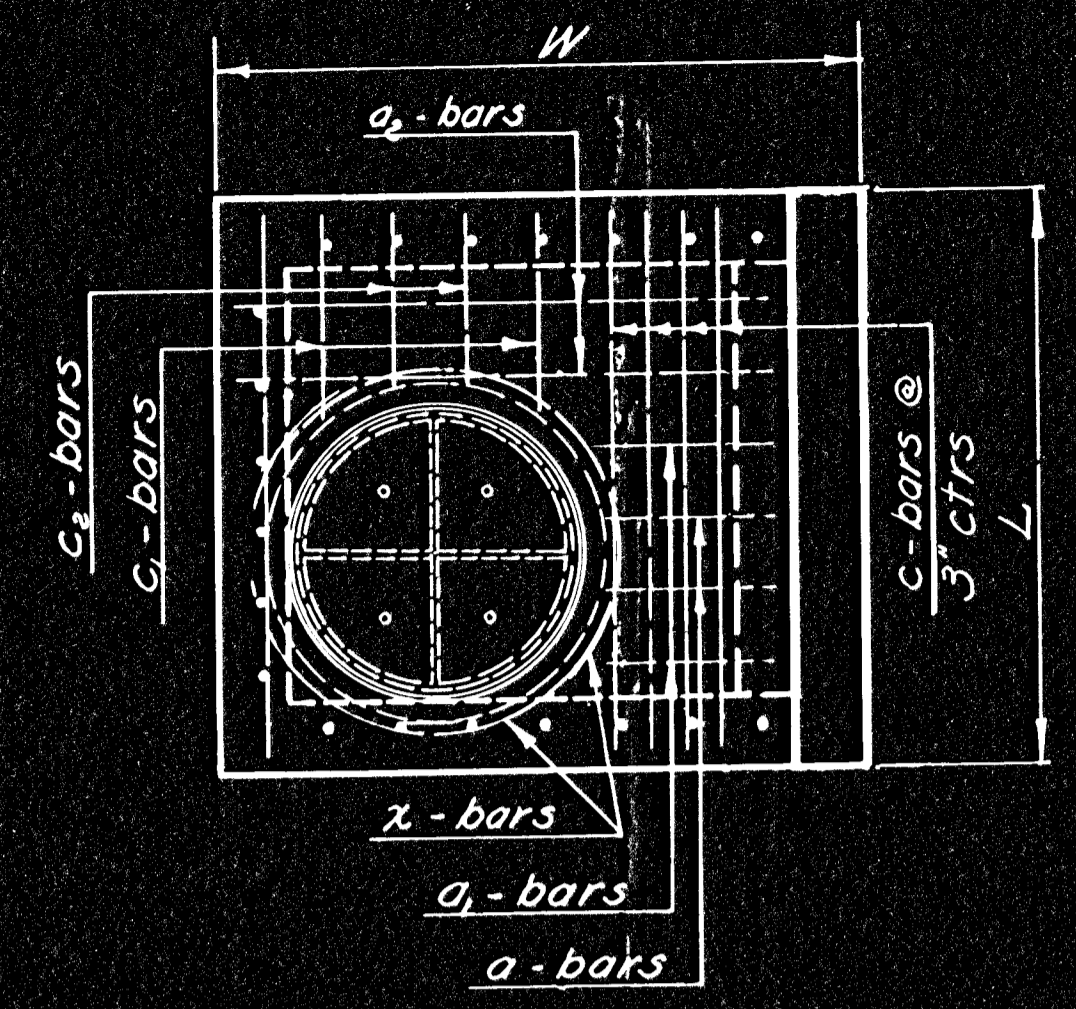
All exposed cast iron surfaces, not subject to traffic, shall receive one coat of a zinc dust paint applied either in the shop or in the field, and two coats of aluminum paint, applied in the field. Cast iron steps shall be installed in all storm sewer inlets with an H-dimension greater than 6 ft. See plan sheet entitled AUXILIARY INLET DETAILS for fabrication details.

REINFORCING STEEL

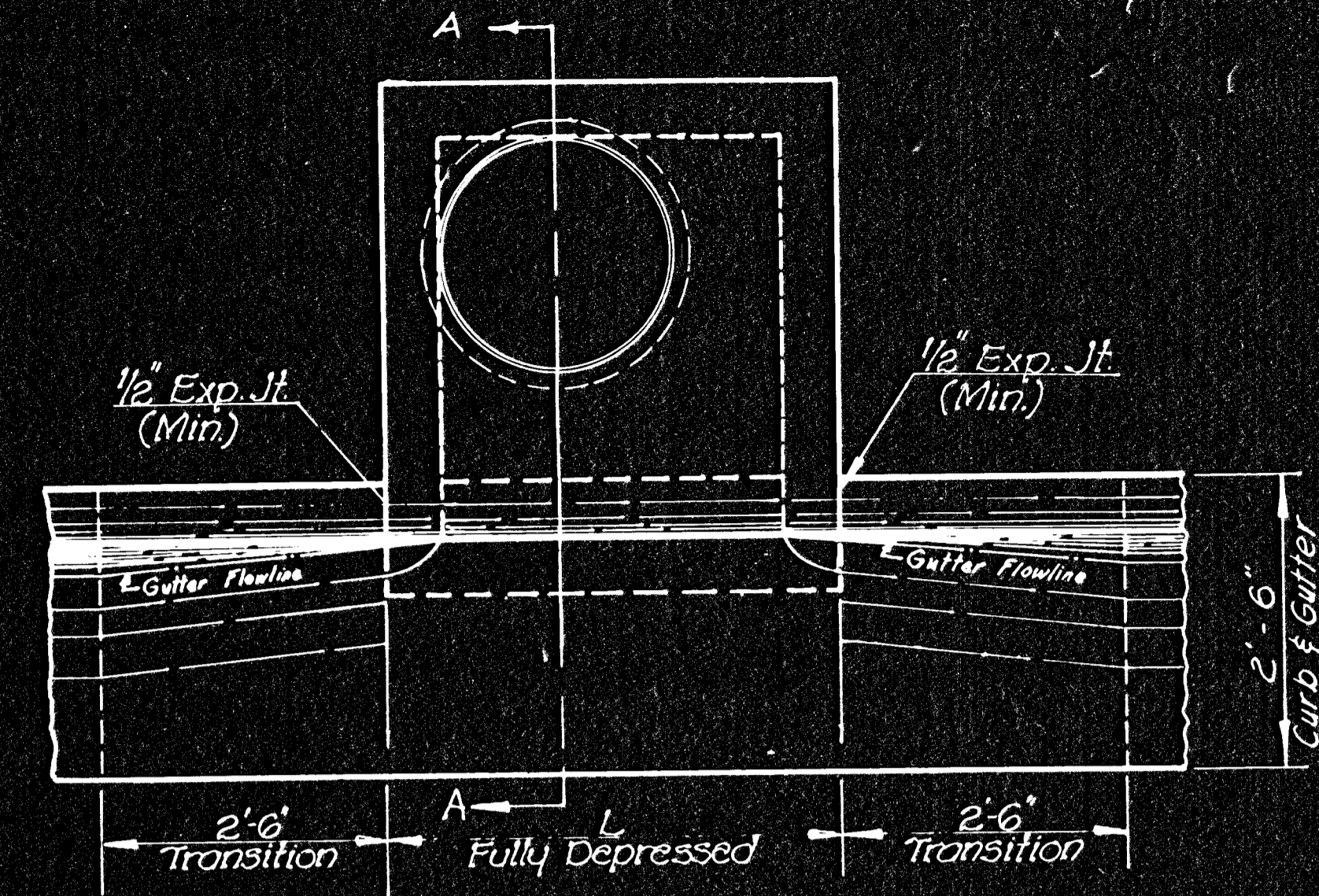
All dimensions relative to reinforcing steel are to the center of bars unless otherwise noted on the plans. Reinforcing steel shall be spaced at 6" centers and shall be 1-1/2" clear distance from slab surfaces, unless otherwise shown on the plans. All reinforcing steel shall be placed within ± 1/4" of plan dimension, unless waived by the Engineer. Reinforcing steel shall be bent around all pipes unless otherwise directed by the Engineer. See plan sheet entitled AUXILIARY INLET DETAILS for reinforcing steel quantities and fabrication details.

MISCELLANEOUS

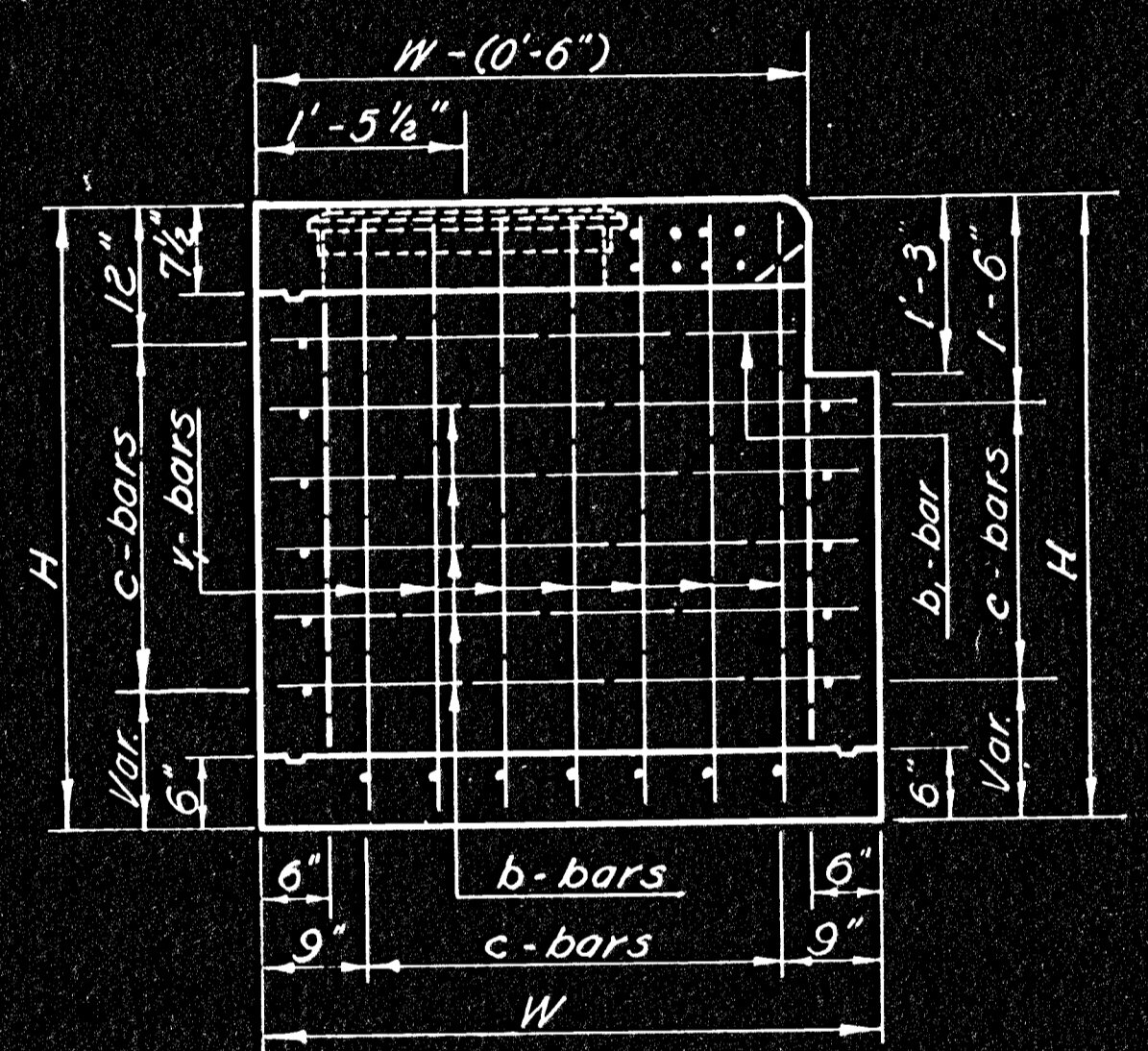
When directed by the Engineer, the top of the inlet shall be sloped in order to match the longitudinal roadway grade ground line and/or other conditions. When directed by the Engineer, small openings may be required in the back of the inlet in order to drain a low area. No deductions in concrete quantities will be made for these openings. Expansion joint material shall be either poured joint sealing compound (hot or cold) or pre-molded joint filler (non-extruding, Type B) unless otherwise noted on the plans. Inlet floors shall be shaped as shown on the plan sheet entitled AUXILIARY INLET DETAILS. No concrete quantities shall be computed for this work. Gutter shaping shall be accomplished as shown, and payment shall be subsidiary to the adjacent type of curb and gutter.



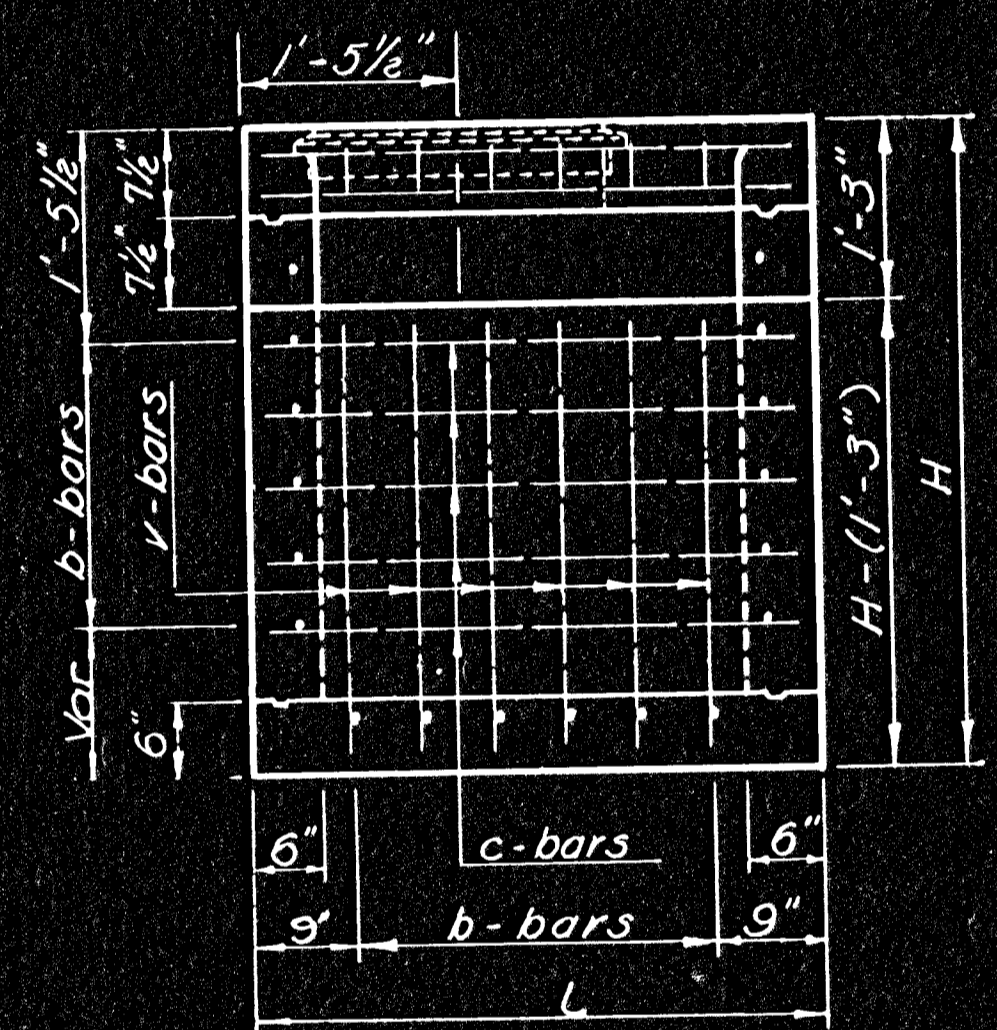
TOP VIEW



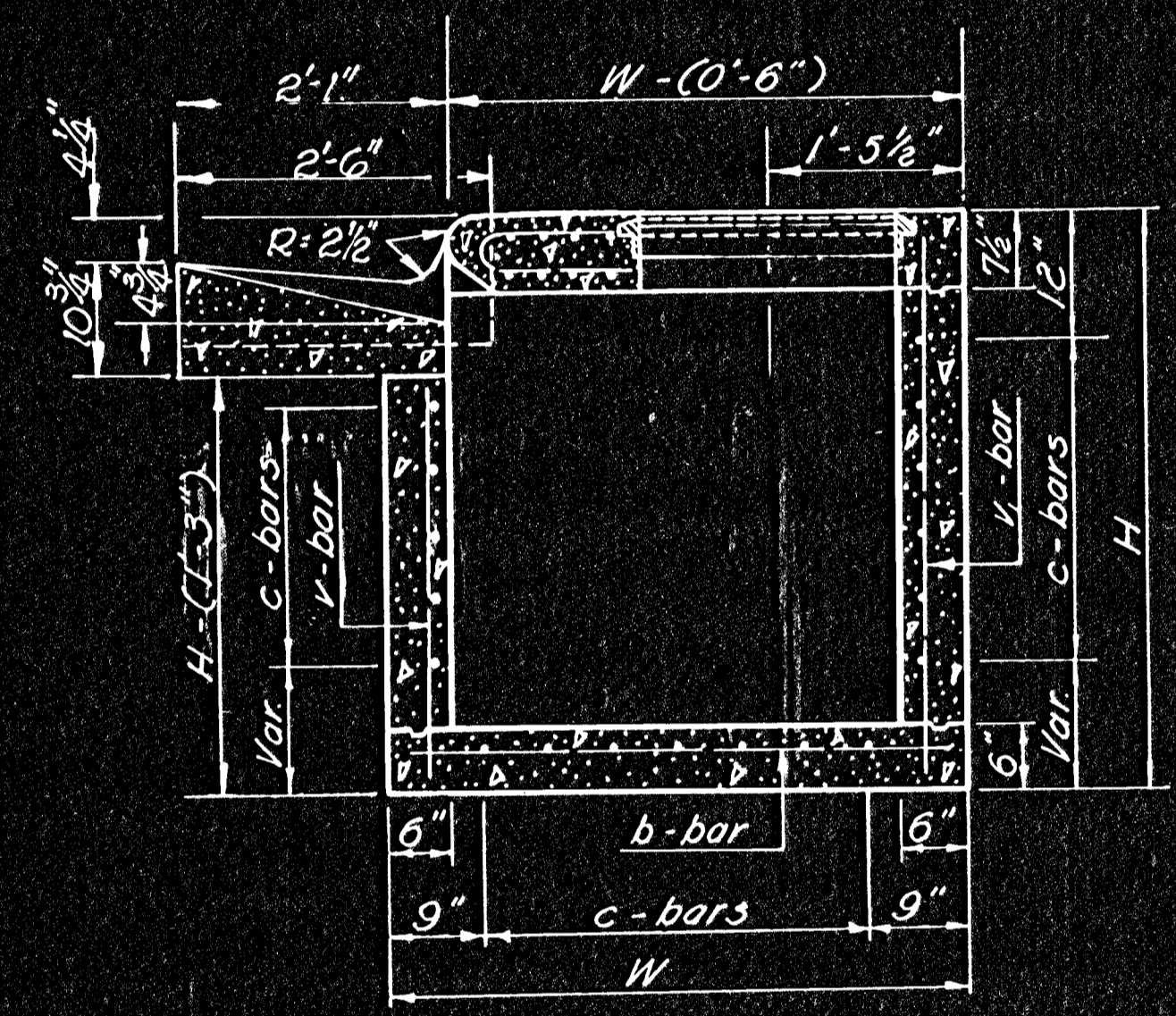
PLAN



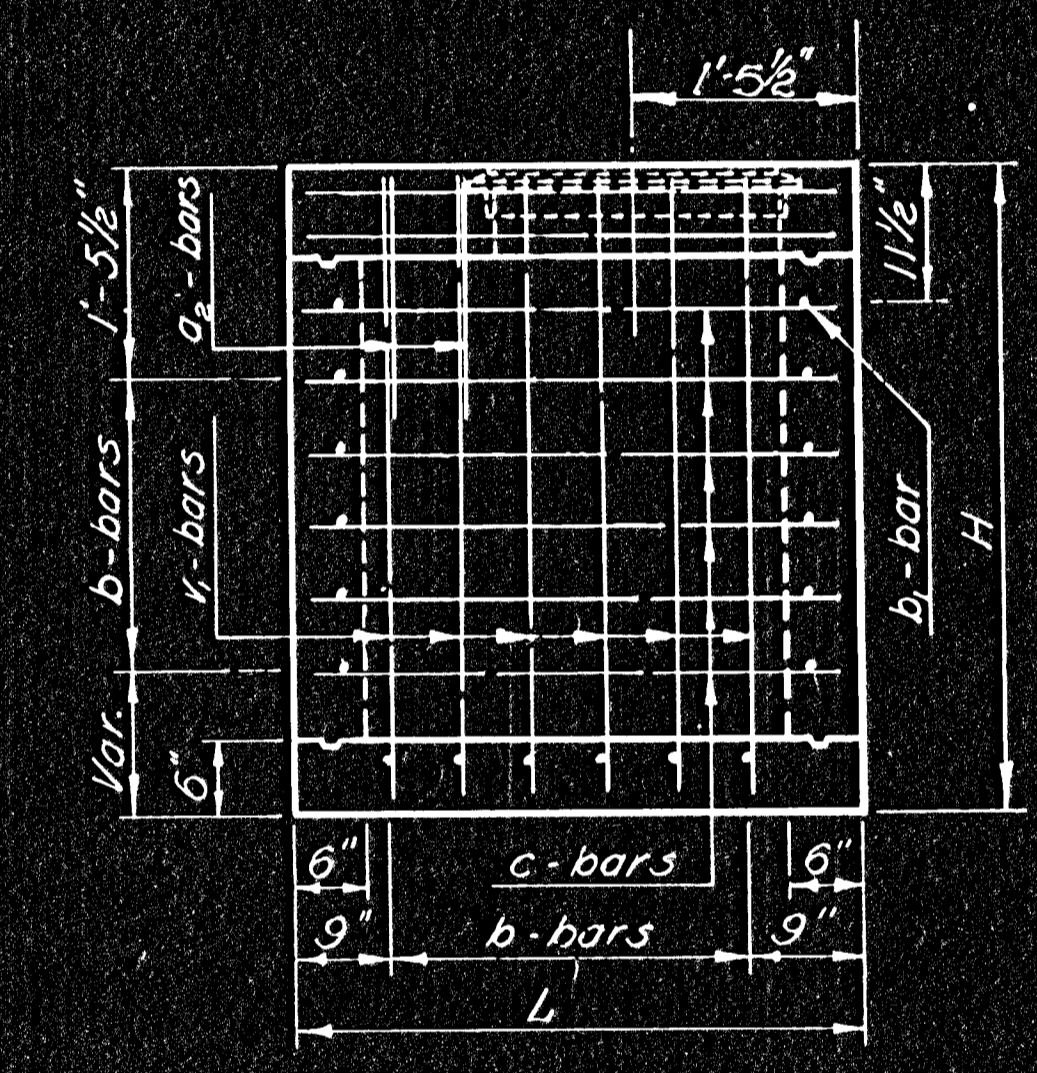
SIDE VIEW



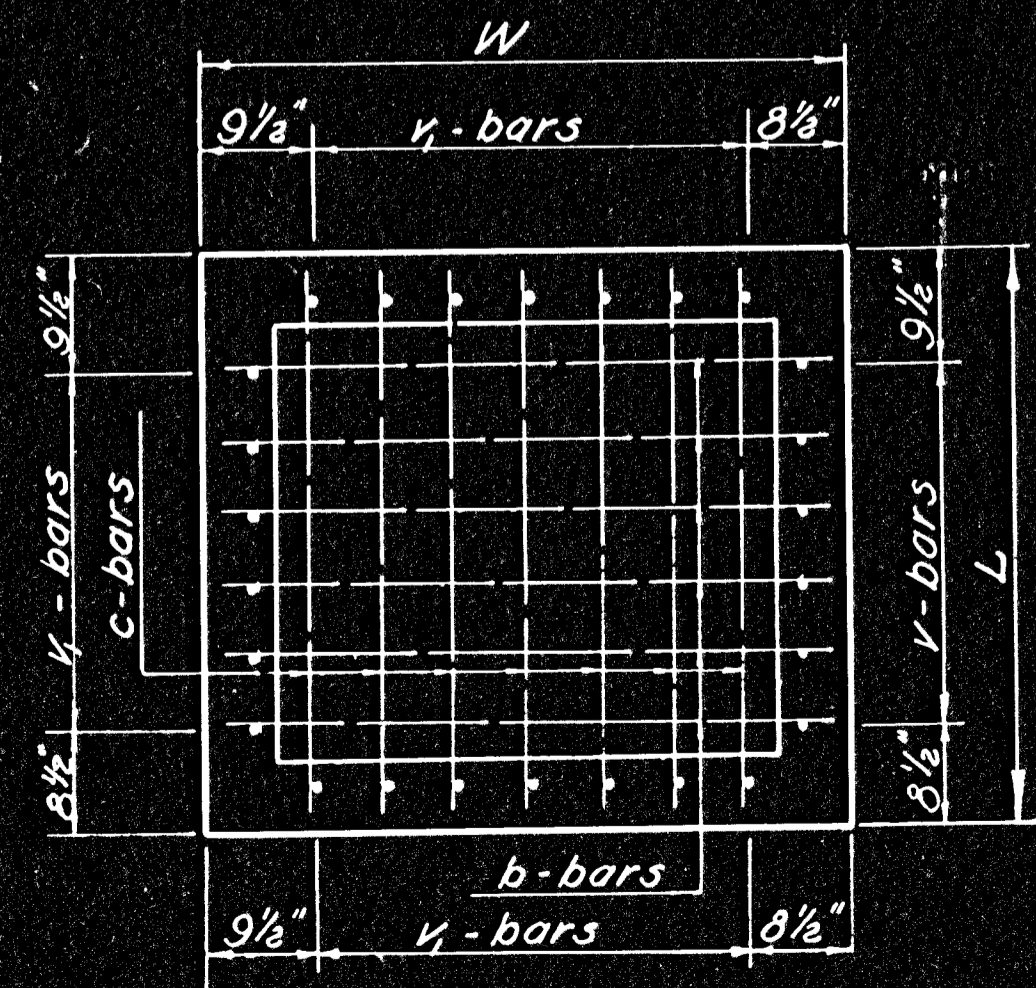
FRONT VIEW



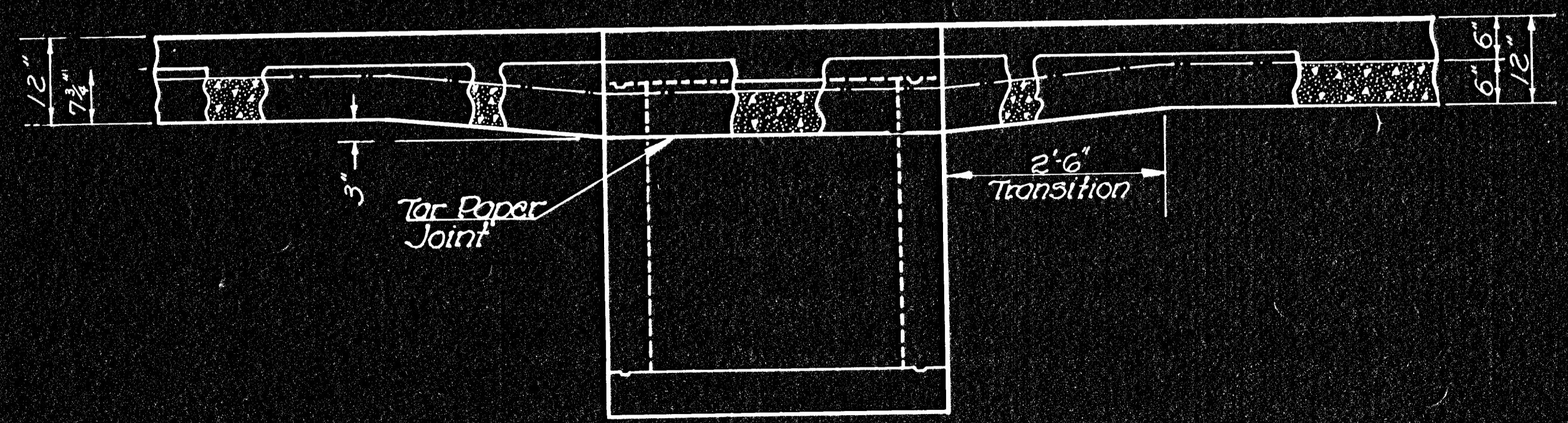
SECTION A-A



REAR VIEW



BOTTOM VIEW



3				
2				
1				
NO.	DATE	REVISIONS	BY	APP'D
STATE HIGHWAY COMMISSION OF KANSAS				
TYPE 22				
CURB INLET				
SHEET NO.	OF	SCALE	APP'D	
DESIGNED		DETAILED	QUANTITIES	TRACED
DESIGN CK.		DETAIL CK.	QUAN. CK.	TRACE CK.