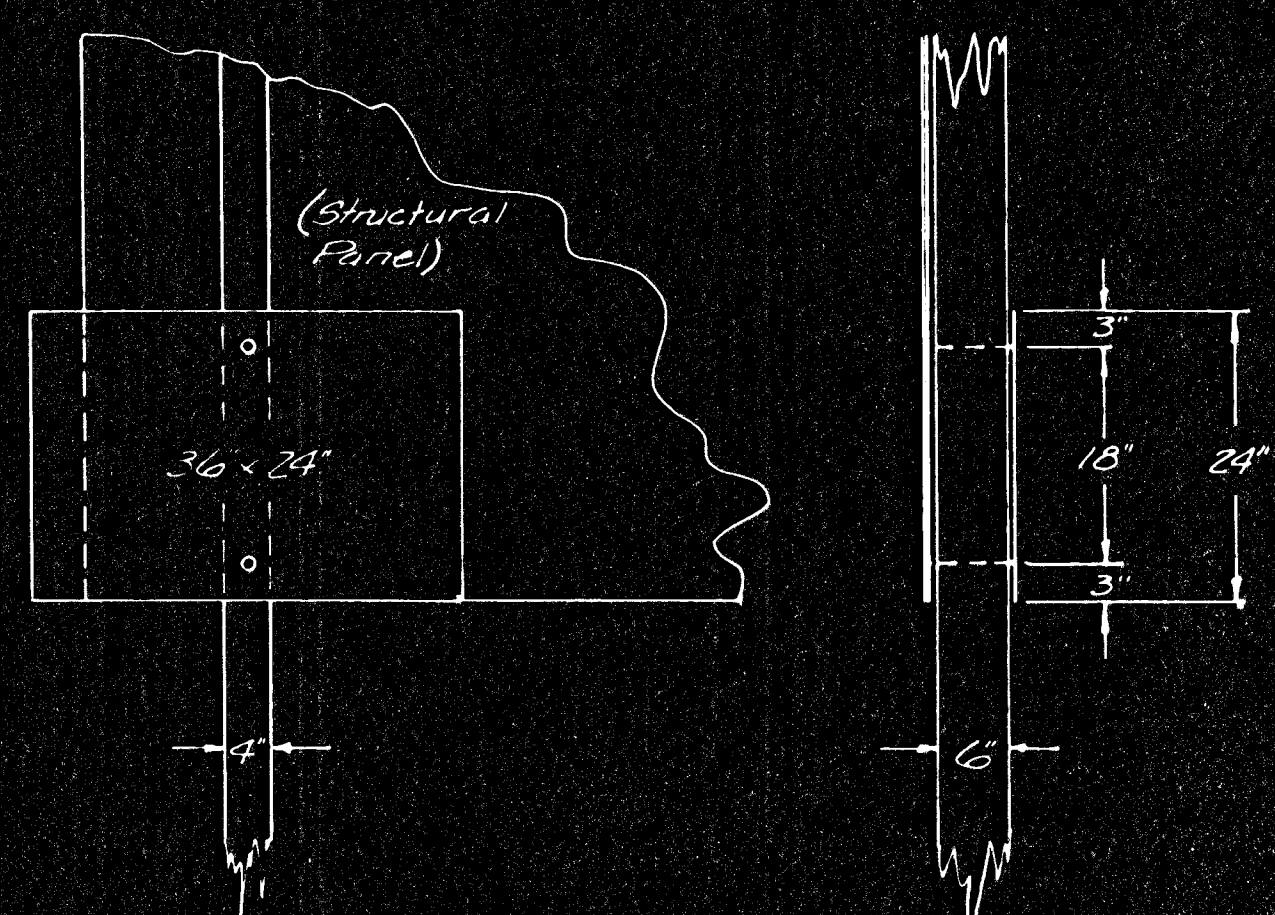
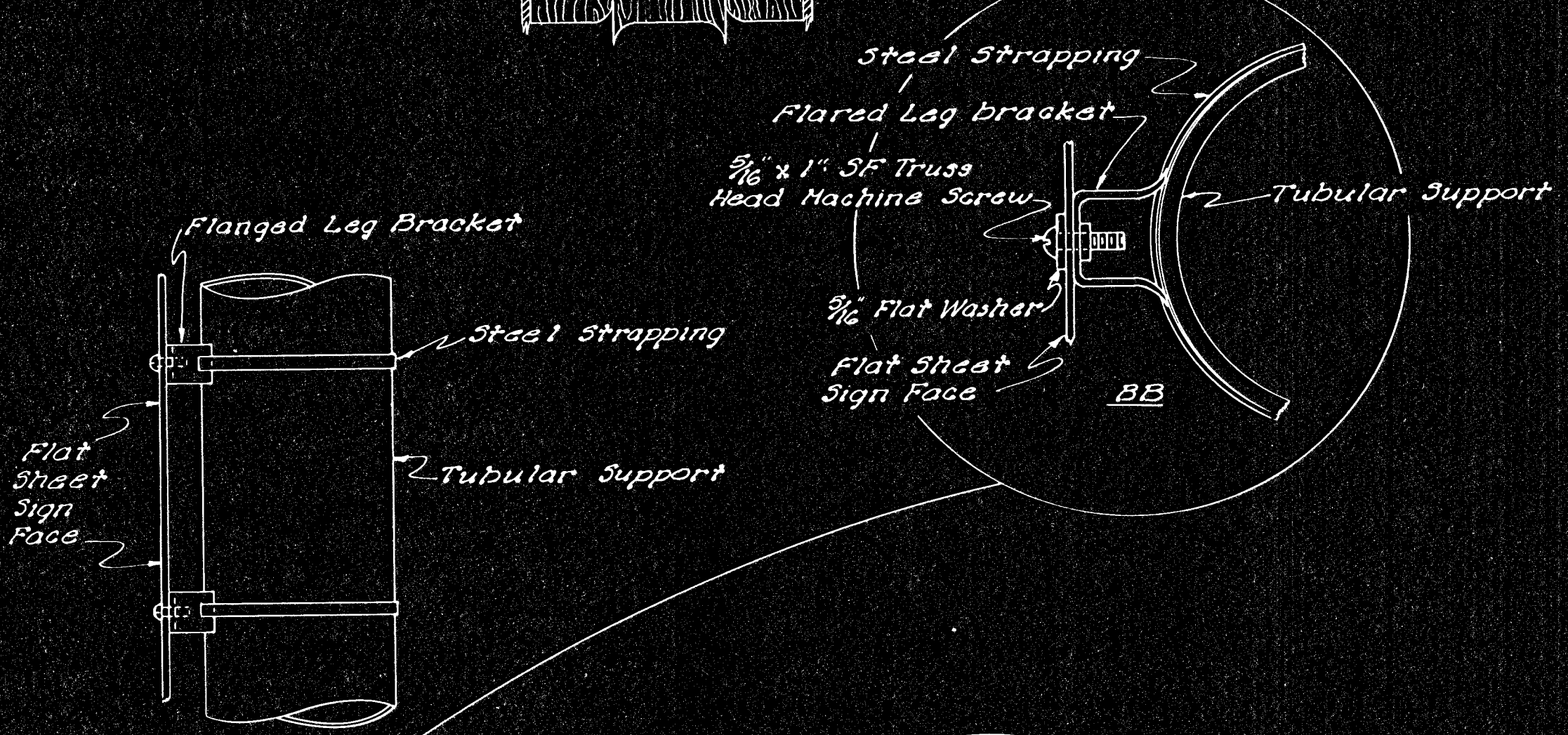
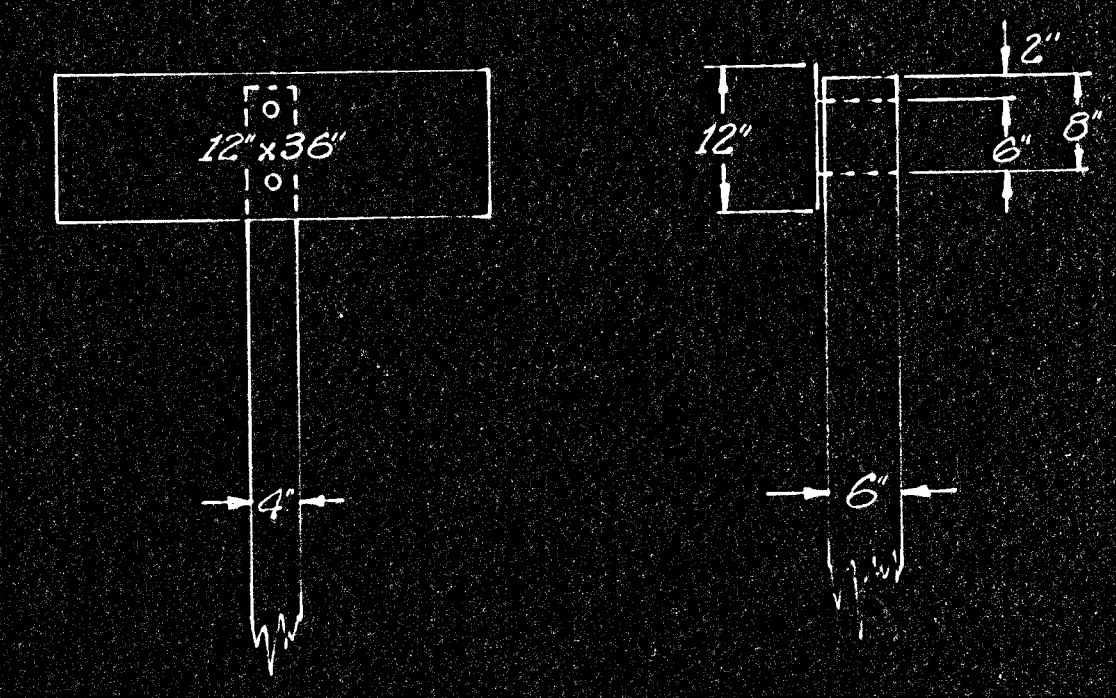
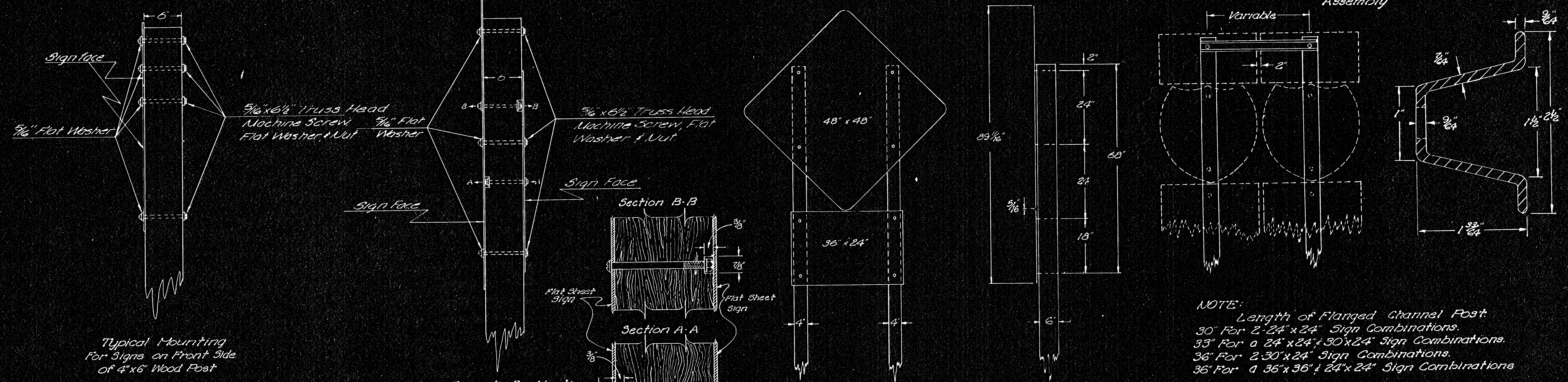


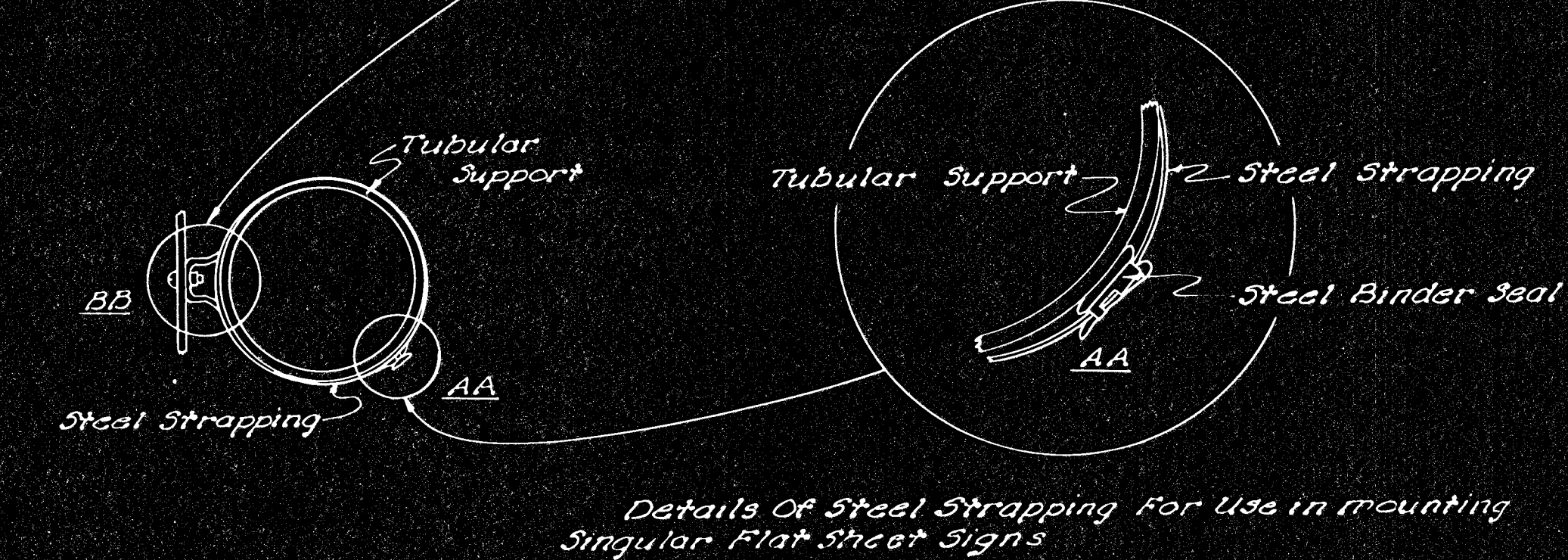
F.H.W.A. REGION NO.	STATE	PROJECT NO.	YEAR	SHEET NO.	TOTAL SHEETS
7	KANSAS		1978	56	143

PROJ. NO. (BC) 96-87 K-044-1(28) PTS. I & II

Attachment of 200 lb. Flanged Channel Post to 2-Post Route Marker Assembly



Typical Standard Mounting
R5-9 on back of Structural Panel Sign



Details of Steel Strapping For Use in mounting Singular Flat Sheet Signs

NOTE:
Additional mounting holes required in flat aluminum signs shall be drilled by the contractor.
All mounting holes in the wood posts shall be drilled prior to treating.
All bolts and nuts for fastening the flat sheet signs to the wood post shall comply with section 1006.14(b) and washers shall comply with section 1006.14(c) and (f) of the Standard Specifications for Road and Bridge Construction (1973 Edition).
All mounting holes in the wood sign posts are to be 3/8" in diameter.

3					
2					
1					
NO.	DATE	REVISIONS	BY	APP'D	
KANSAS DEPARTMENT OF TRANSPORTATION					
Mounting Details For Flat Sheet Signs On Wood Posts And Tubular Support or Wood Power Pole					
SHEET NO. 56	37/43	SCALE: As Shown	APP'D	[Signature]	
DESIGNED BY: H.H.	DETAILS BY: H.H.	QUANTITIES	INVESTIGATED	APPROVED	
DESIGNER: H.H.	DETAILS: H.H.	DRAWN: H.H.	CHECKED: H.H.	INCHES	