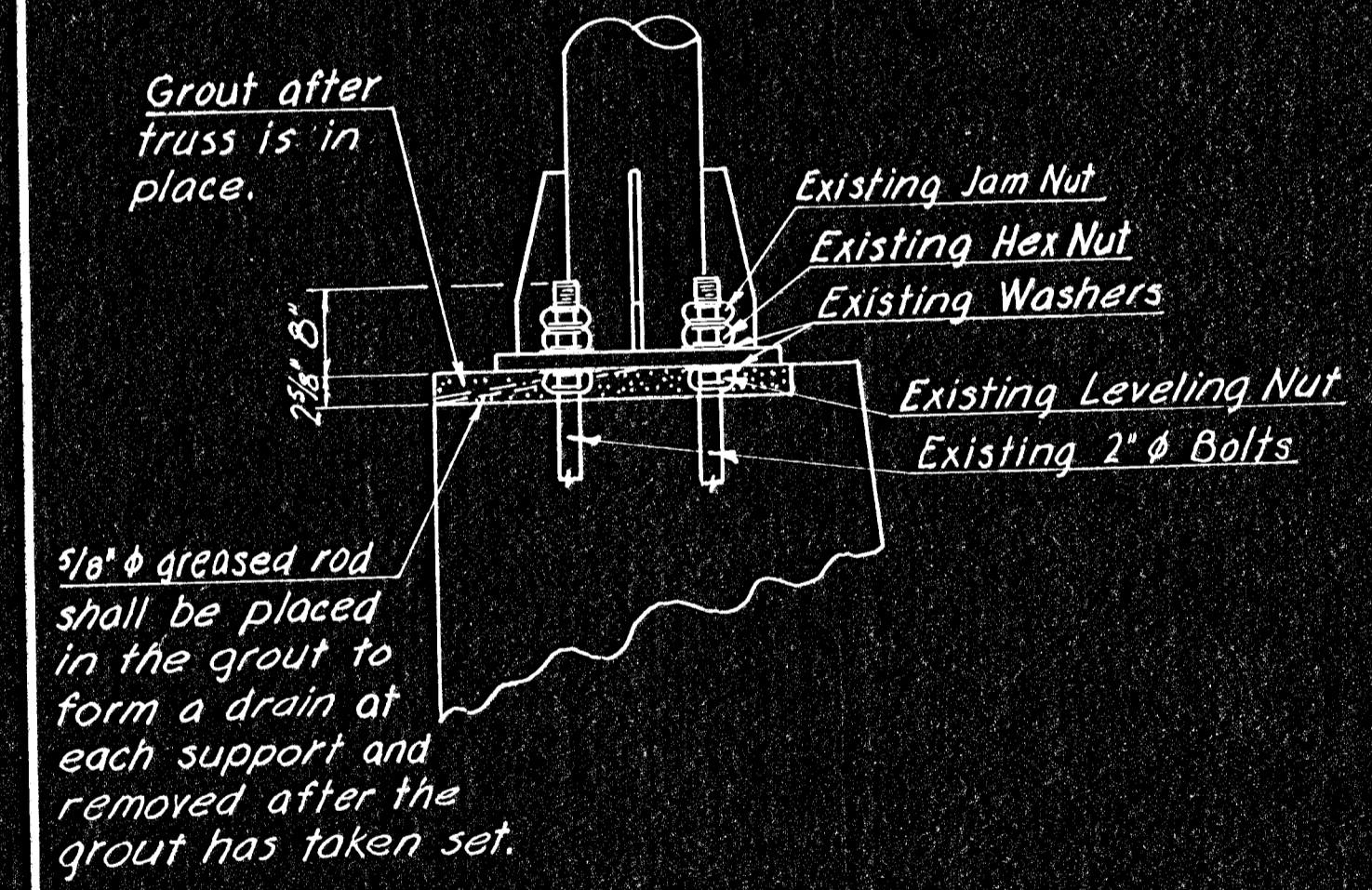


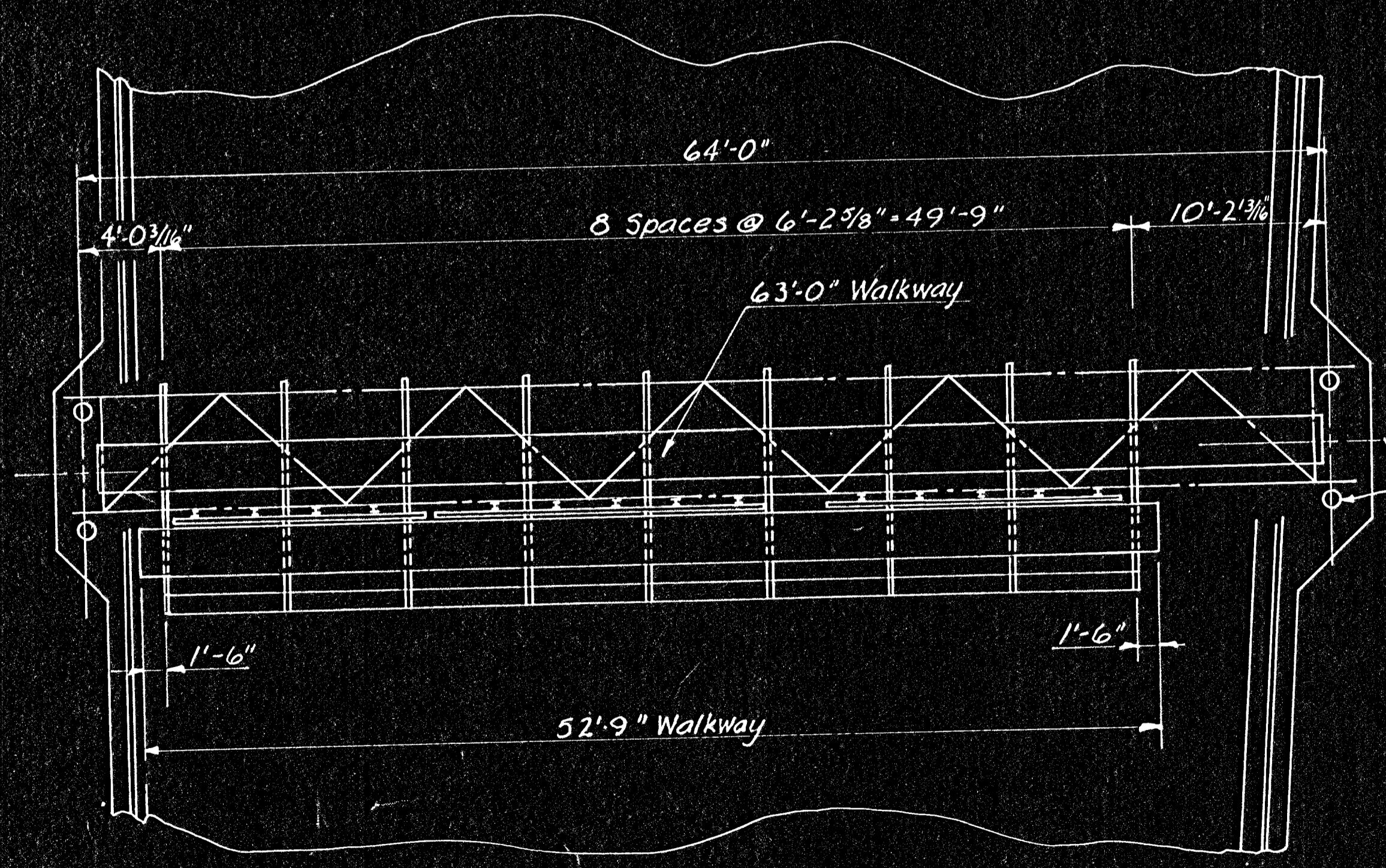
ELEVATION



TRUSS TO SIGN SUPPORT MOUNTING DETAILS

Note: Any missing nuts and washers shall be replaced at the Contractor's expense.

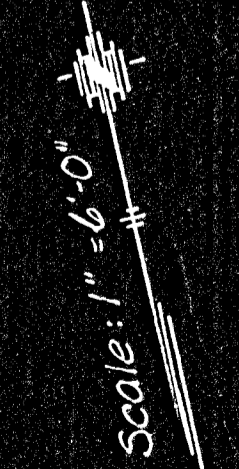
Note: All dimensions for the bridge are taken from the original plans and shall be checked in the field.



PLAN

Provide handhole in this column for future lighting. Grounding shall be done by Lighting Contractor.

End Supports = Sta. 899+80



DETAILS ALUMINUM ALTERNATE				
Truss	Member 1 Wall thickness .250"			
	Member 2 Wall thickness .226"			
	N=10	X=10 7/8"	S=6'-2 5/8"	Camber = 1/8"
End Supports	Member 1 Wall thickness .365"			
	Member 2 Wall thickness .237"			
	Left	N=3	S=5'-8"	L=25'-0 1/2"
	Right	N=2	S=7'-0"	L=22'-0 1/2"

3					
2					
1					
NO.	DATE	REVISIONS	BY	APP'D	
KANSAS DEPARTMENT OF TRANSPORTATION					
STA. 899+80			BR. NO. 96-87-2106		
CONSTRUCTION LAYOUT OVERHEAD SIGN STRUCTURE ALUMINUM ALTERNATE					
PROJ. NO. (BC) 96-87-K044-1(28) SEDGWICK CO.					
SHEET NO. 91 OF 143	DESIGNED L.E.S.	SCALE	APP'D	QUANTITIES	TRACED
DESIGN CR. DRG	DETAIL CR. DRG	QUAN. CK.			TRACE CR.