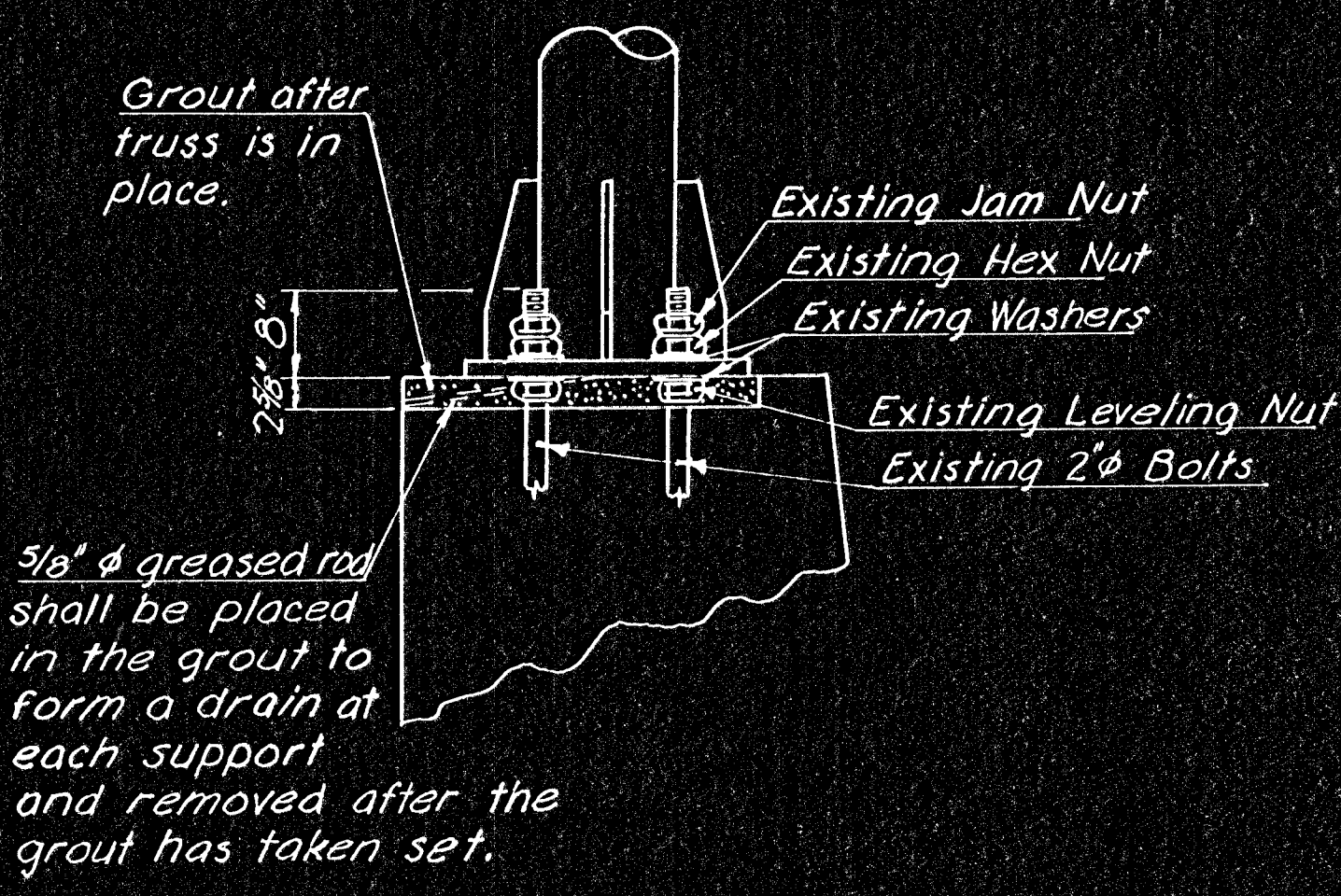


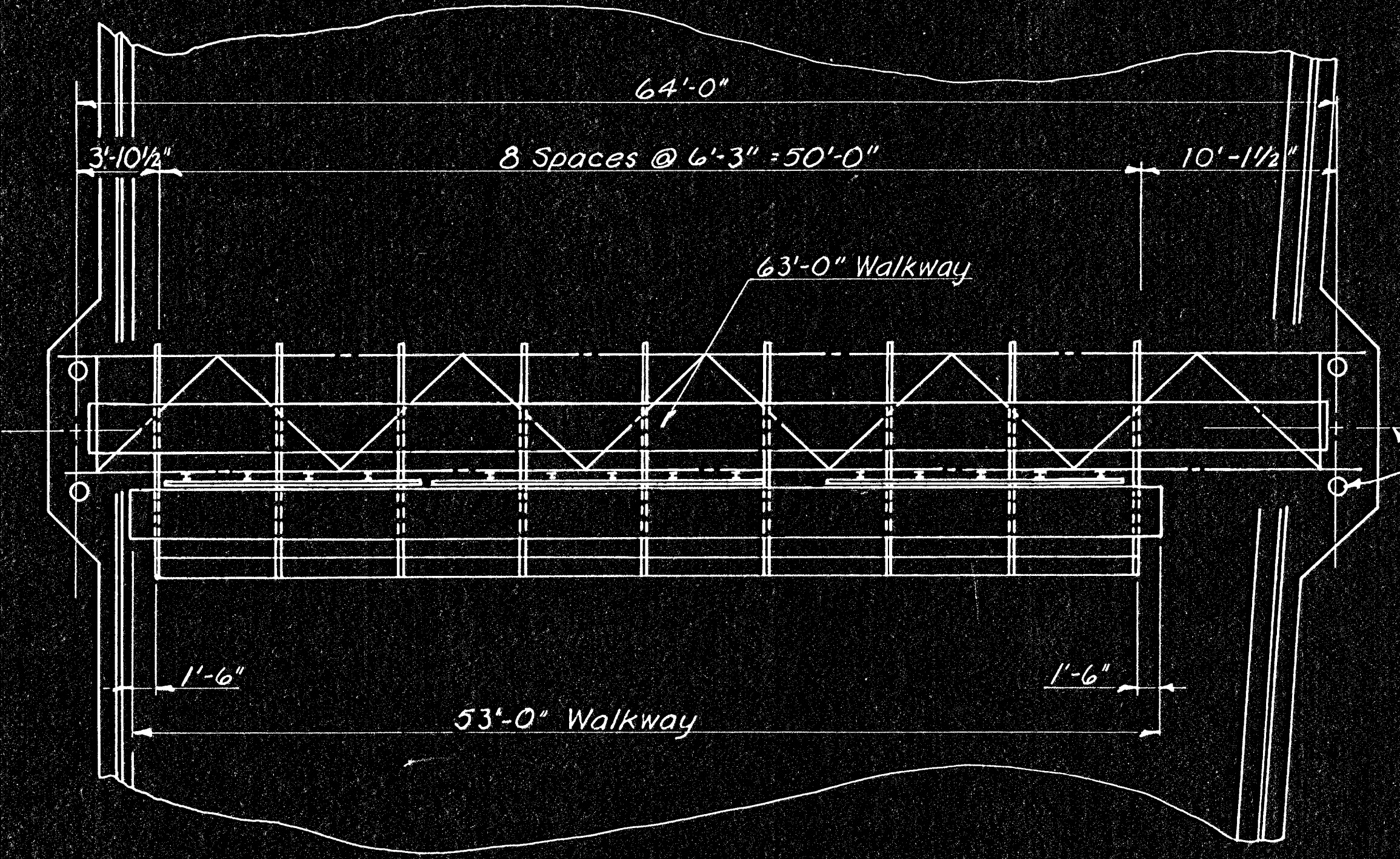
ELEVATION



TRUSS TO SIGN SUPPORT MOUNTING DETAIL

Note: Any missing nuts and washers shall be replaced at the Contractor's expense.

Note: All dimensions for the bridge are taken from the original plans and shall be checked in the field.



PLAN

DETAILS STEEL ALTERNATE			
Truss	Member 1 Wall thickness .188"		
	Member 2 Wall thickness .203"		
	N=10	X=9"	S=6'-3" Camber 1/4"
End Supports	Member 1 Wall thickness .250"		
	Member 2 Wall thickness .125"		
	Left	N=3	S=5'-8" L=24'-10 1/2"
	Right	N=2	S=7'-0" L=21'-10 1/2"

Provide handhole in this column for future lighting. Grounding shall be done by Lighting Contractor.

End Supports = Sta. 899+80

Scale: 1" = 6'-0"

NO.	DATE	REVISIONS	BY	APP'D
3				
2				
1				

KANSAS DEPARTMENT OF TRANSPORTATION  
 STA. 899+80 BR. NO. 96-87-2106  
 CONSTRUCTION LAYOUT  
 OVERHEAD SIGN STRUCTURE  
 STEEL ALTERNATE  
 PROJ. NO. (BC) 96-87-KO44-1(28) SEDGWICK CO.

DESIGNED L. E. J.	SCALE	APP'D
DESIGN CK. DRS	DETAIL CK. DRE	QUAN. CK.
		TRACED
		TRACE CK.