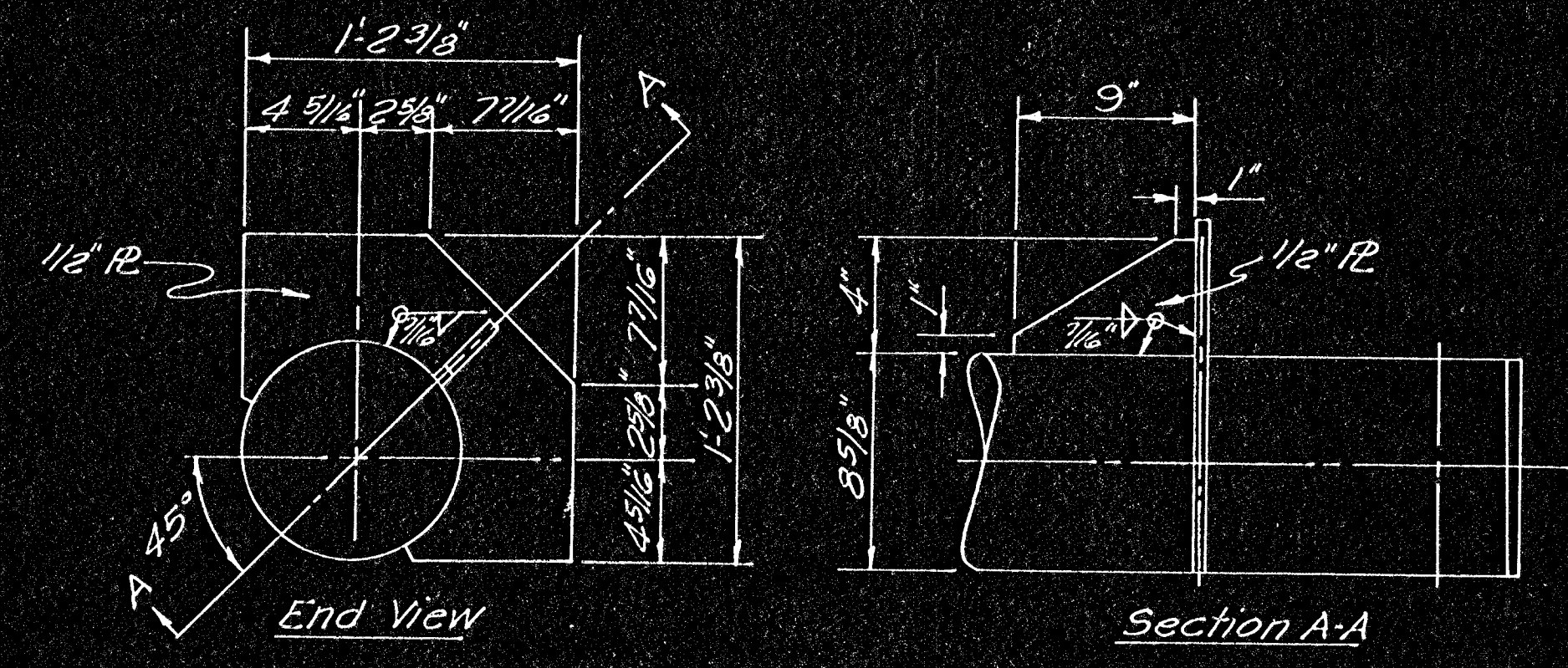
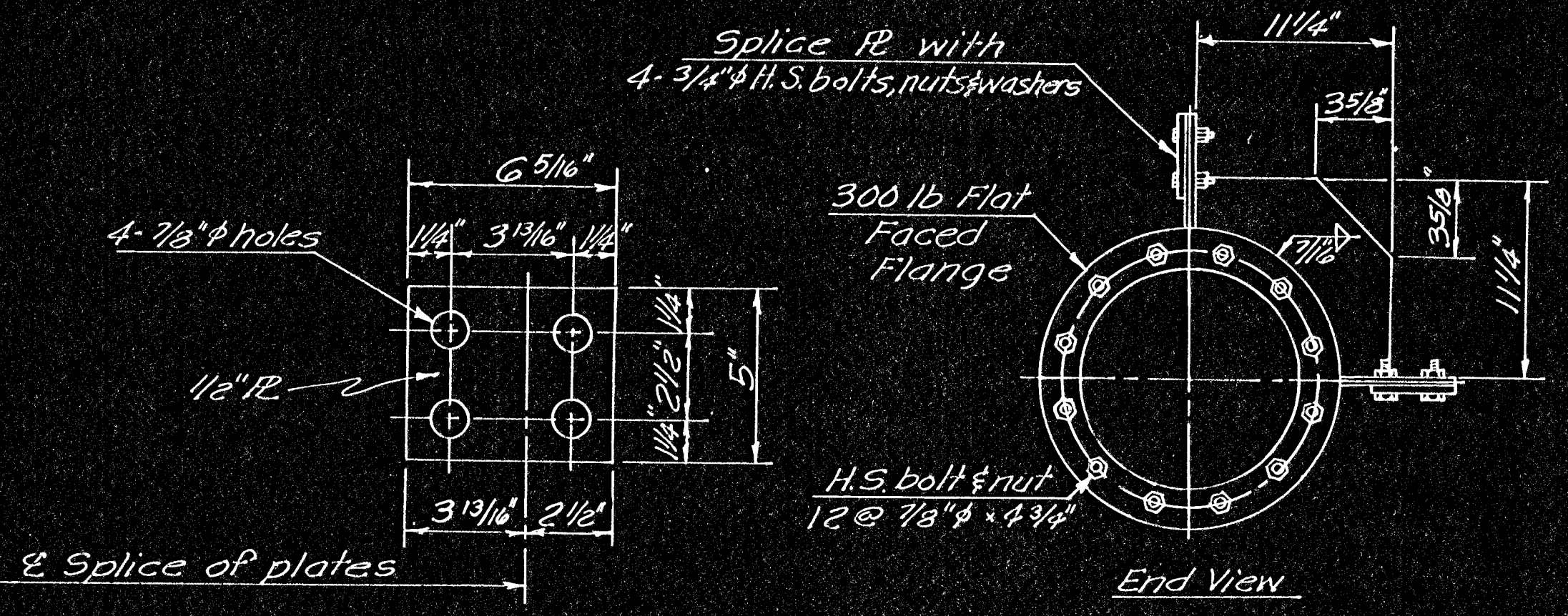


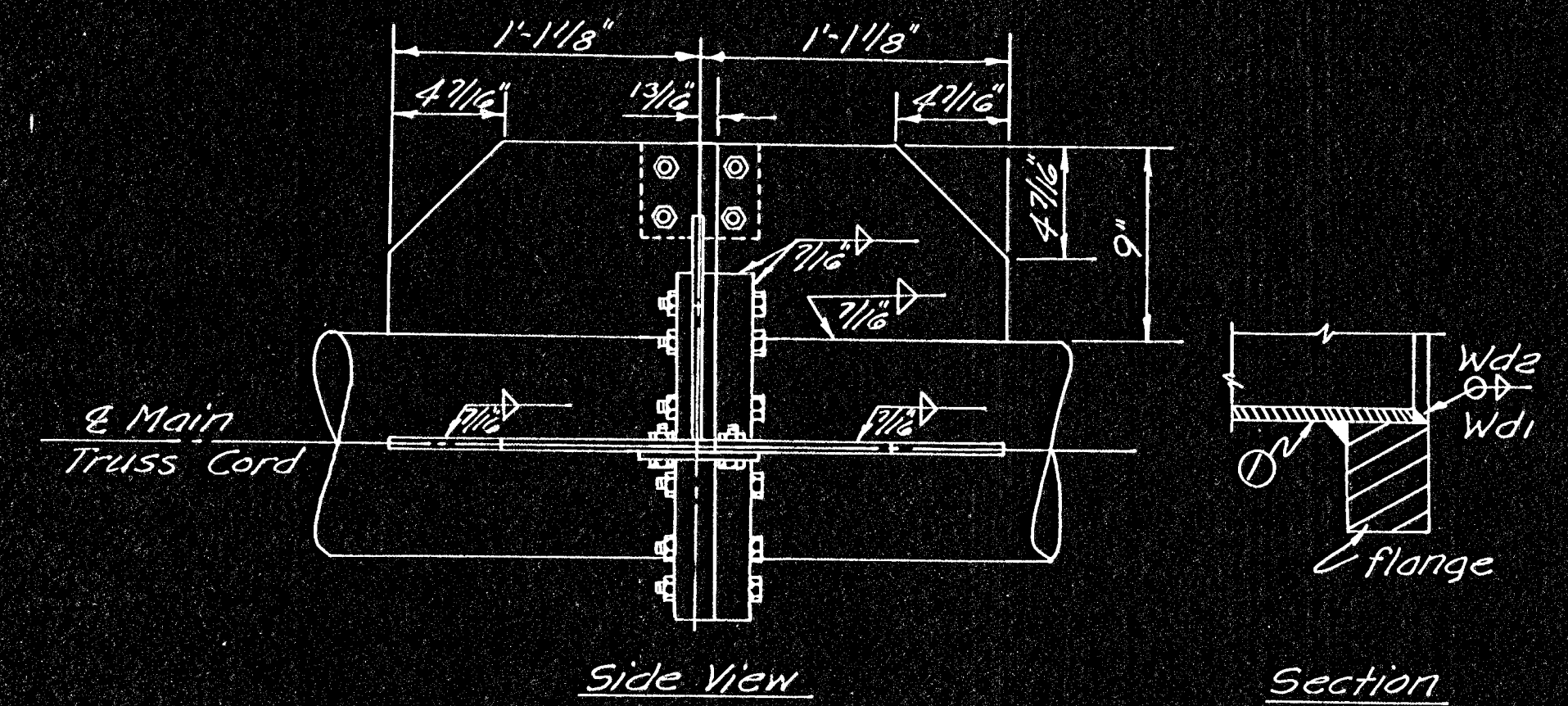
DETAILS END JOINT TYPE I



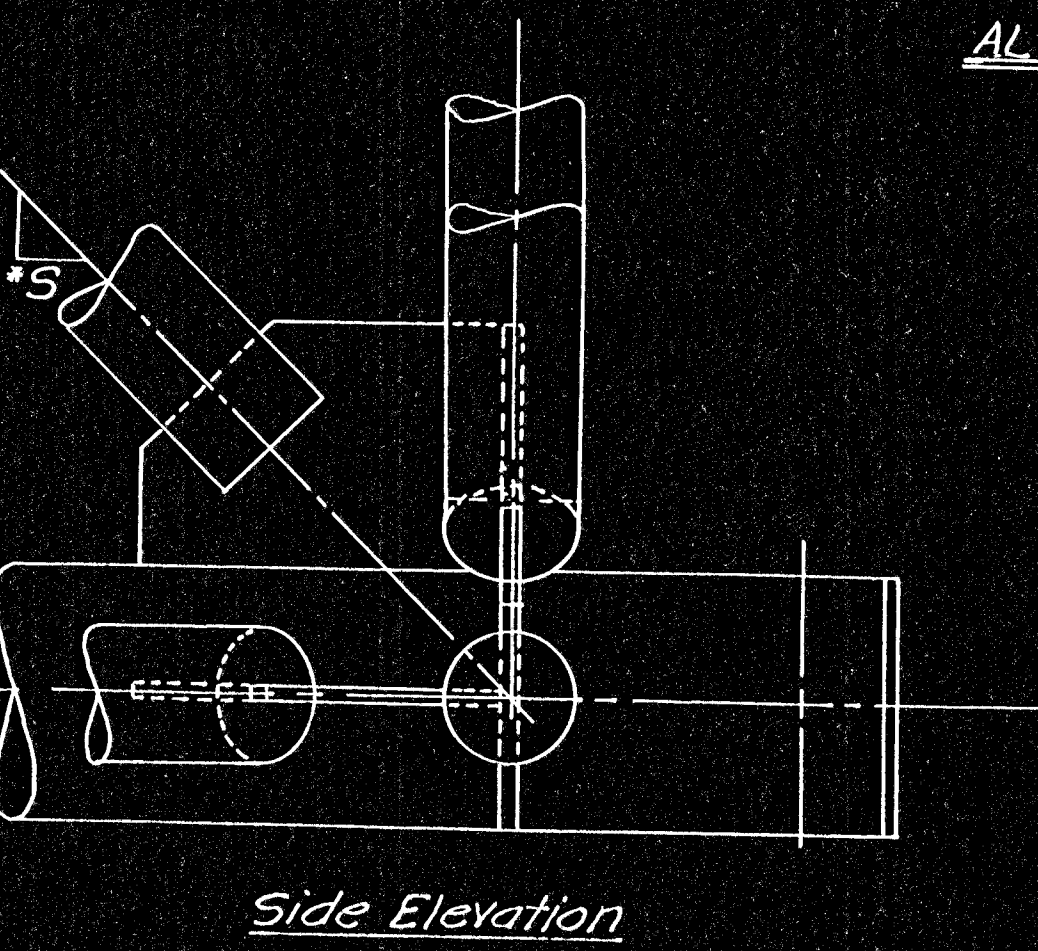
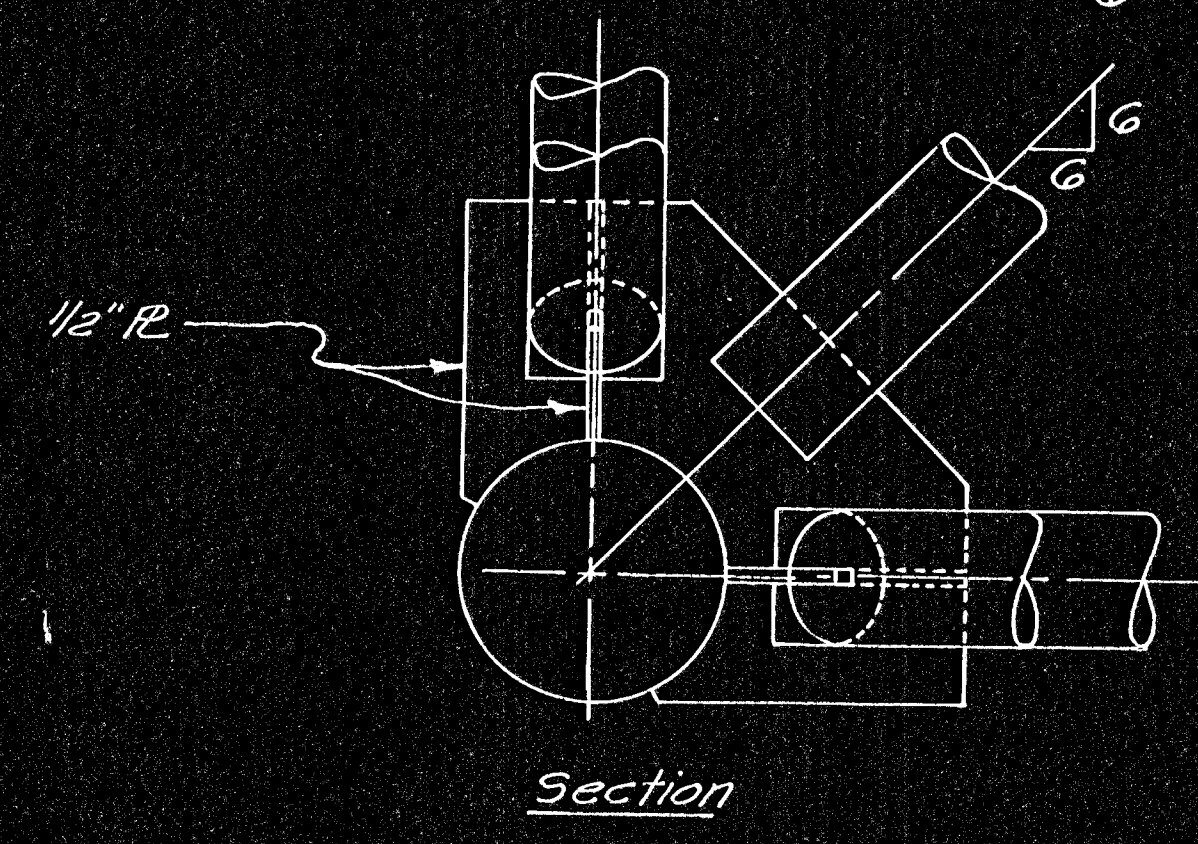
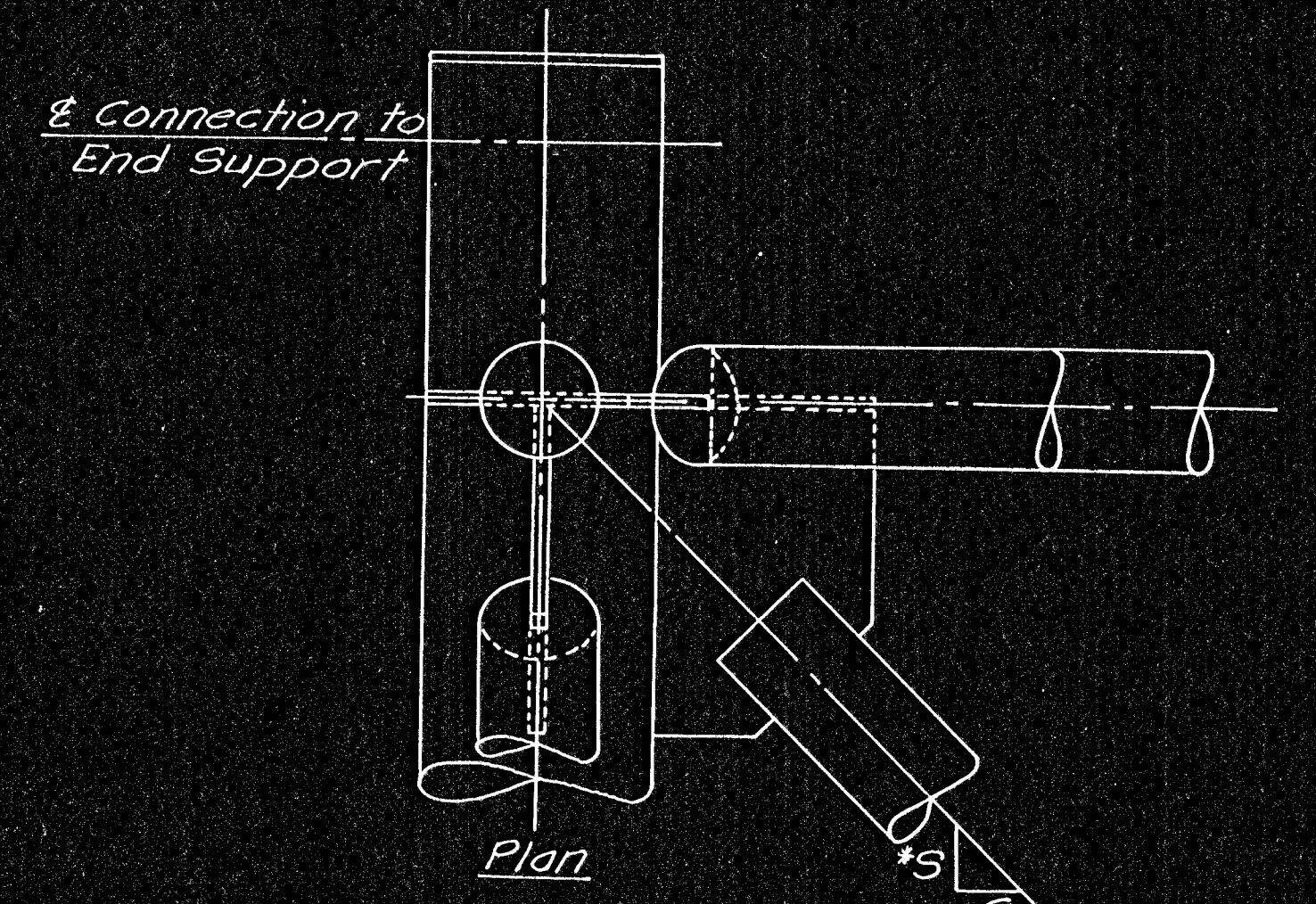
TYPE I JOINT DETAILS



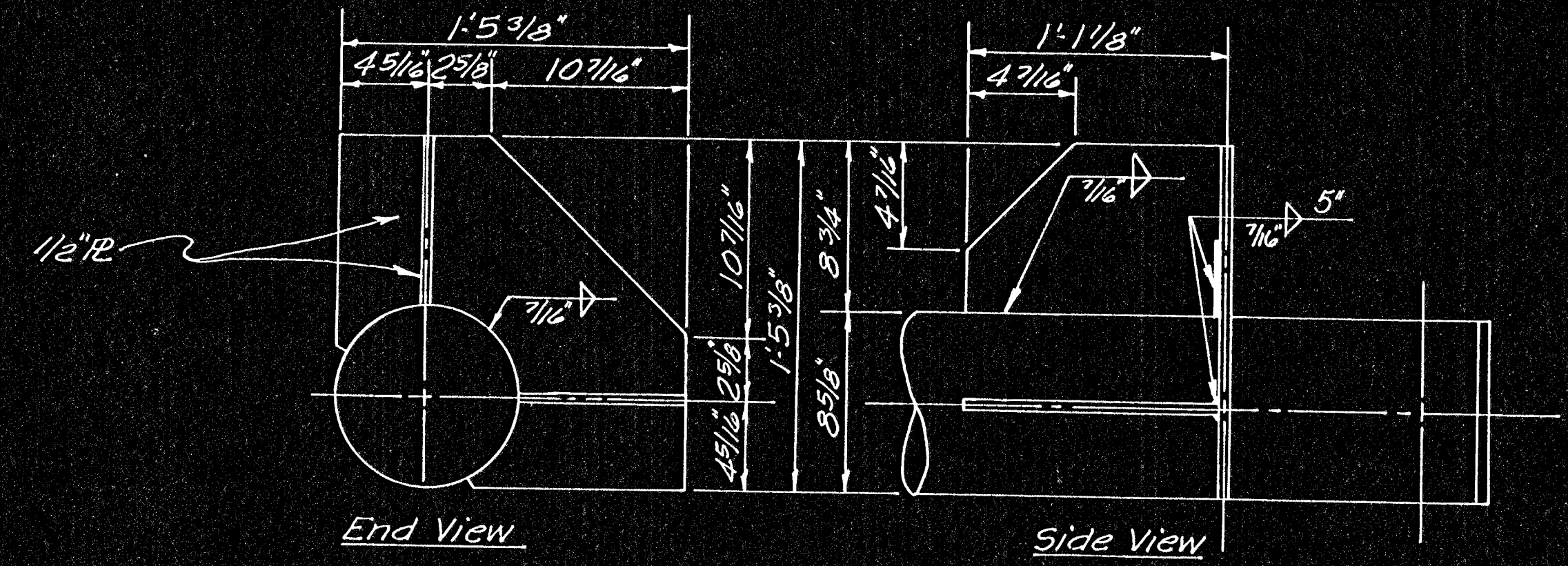
SPLICE R DETAILS



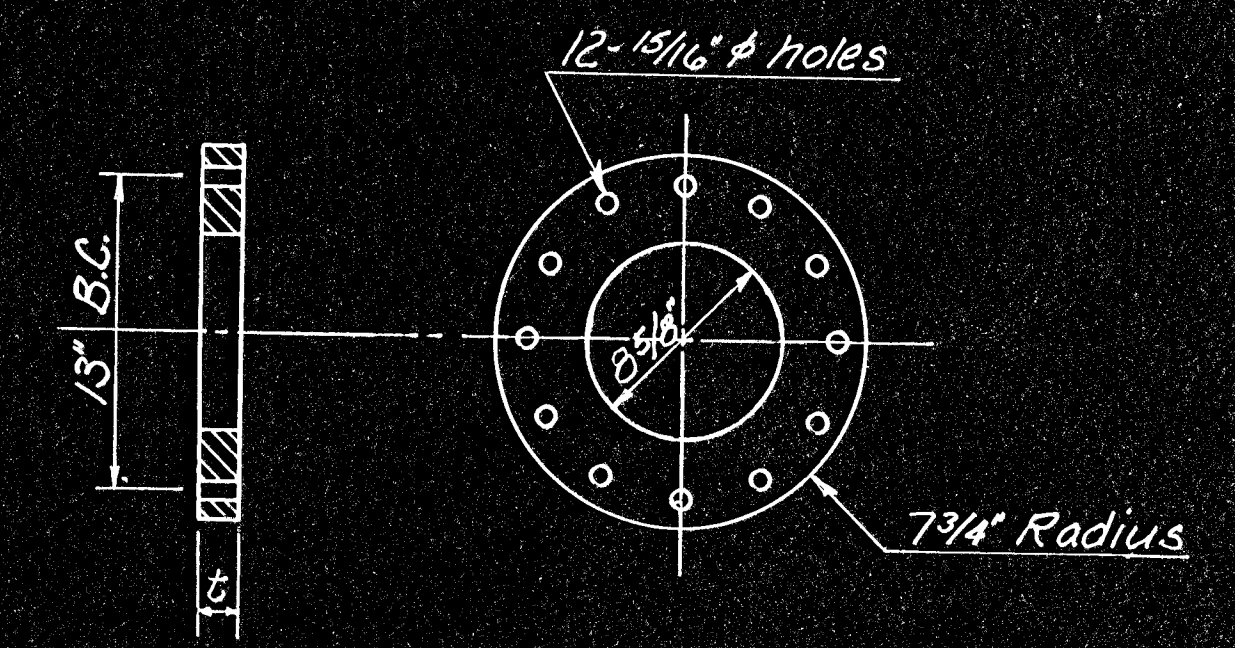
TRUSS SPLICE DETAILS



DETAILS END JOINT TYPE II



TYPE II JOINT DETAILS



ALTERNATE SPLICE PLATE

Material: ASTM B 209 Alloy 6061-T6

* See Construction Layout for wall thickness and "S"

Member	Filler	Splice
Ø wall	weld	R
thickness	size	"S"
0.148	3/16"	1 1/2"
0.250	5/16"	1 3/4"
0.322	3/8"	2"
0.406	7/16"	2 1/4"
0.500	9/16"	2 1/2"

Note: Wd₁ depth to be equal to pipe thickness, build out to obtain full throat.

NO.	DATE	REVISIONS	BY	APP'D
1				
2				
3				

DEPARTMENT OF TRANSPORTATION-KANSAS
STANDARD STRUCTURAL SIGN SUPPORTS
SPAN TYPE OVERHEAD
ALUMINUM TRUSS
END JOINTS & SPLICE DETAILS

DESIGNED: BEM
CHECKED: RBH
SCALE: 1/8" = 1'-0"
APP'D: RBH
QUANTITIES: RBH
TRACED: RBA
TRACE CK: BEM

4-76