

**NOTES**

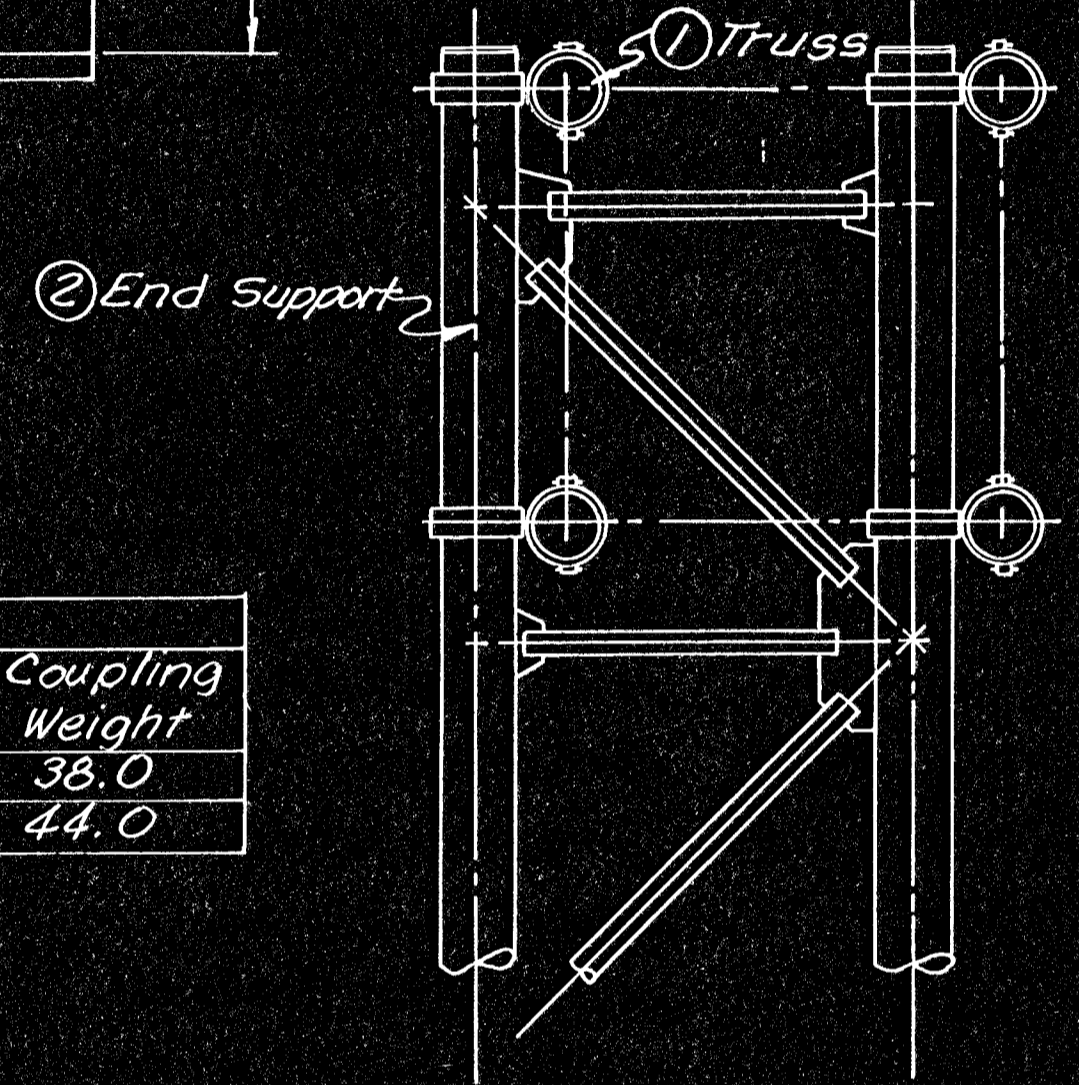
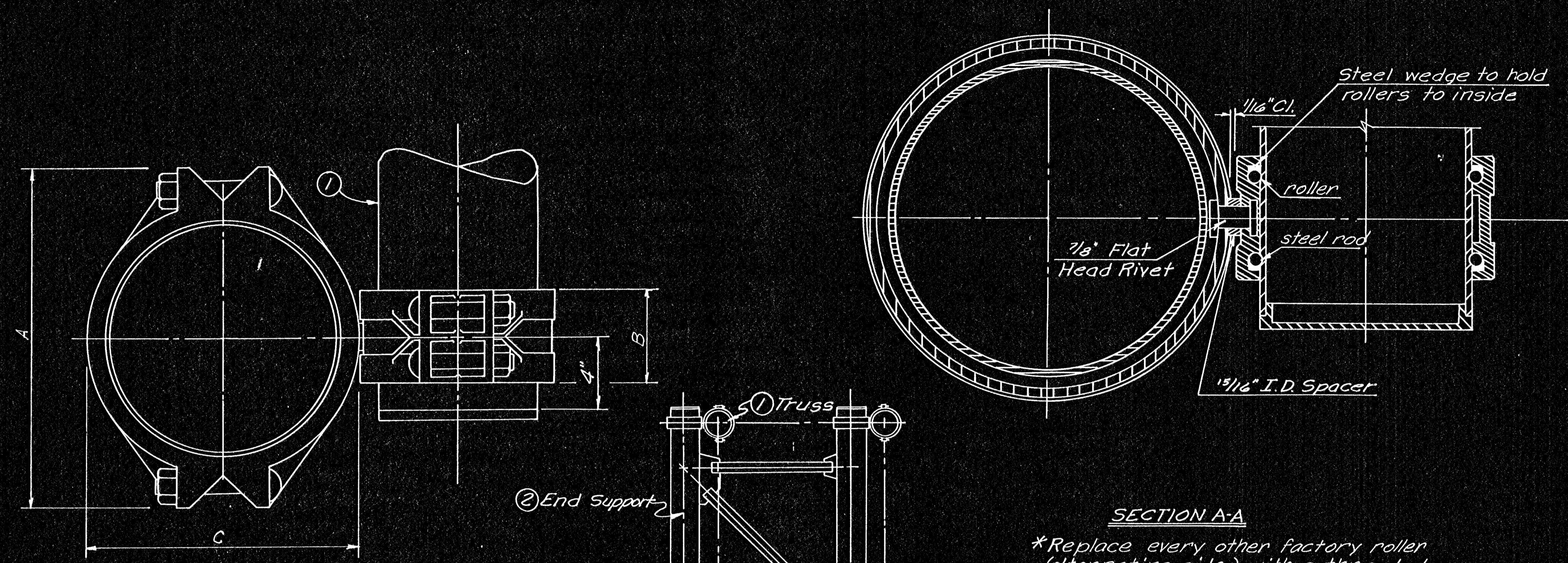
**TRUSS TO END SUPPORT CONNECTION:** Use cast pipe couplings equipped with serrated rollers, with housings drilled and spot faced for rivet swivel. All factory rollers shall be wedged to the inside edge, as shown, to prevent movement between the coupling and the aluminum tube. The housings shall conform to ASTM A47 grade no. 32510 or 35018 or to ASTM A536 grade 604510 and shall be galvanized according to ASTM A125. The rivets shall conform to ASTM A502 grade 2.

**CAMBER:** Camber, as given on the construction layout sheet, shall be placed in the truss by:  
 (1) Blocking the truss and then welding at the joints and welding the splice flanges in place.

(2) Increasing the length of the top truss cords, making sure the splice flanges will be parallel in the field.

(3) Placing light gage spacer plates on the top splice flanges to obtain an increase in the top truss cord as in (2).

**BOLT TORQUE:** The torque on the Coupling bolts shall be 300 ft.-lbs. using the calibrated wrench method.



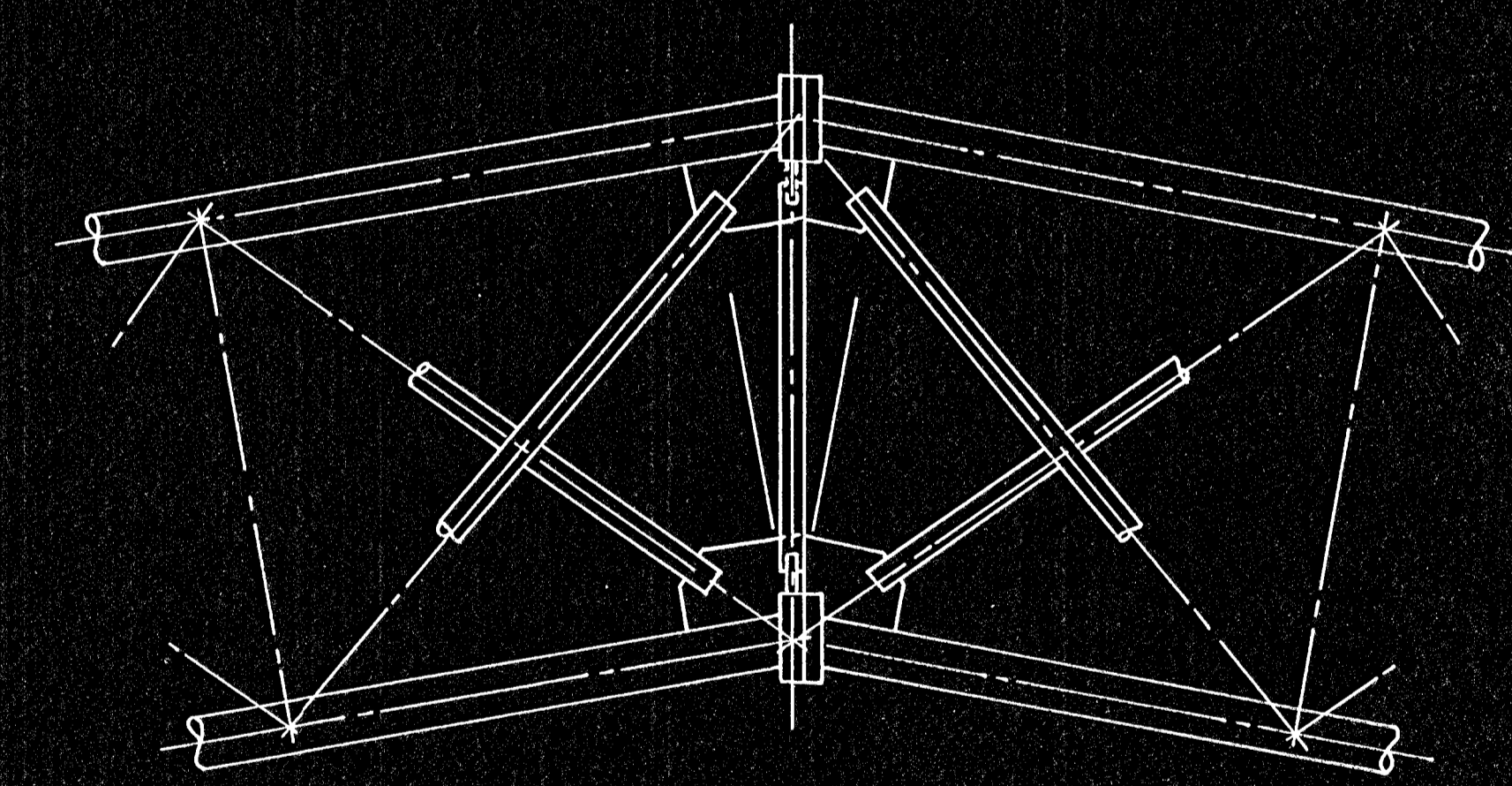
**SECTION A-A**

\*Replace every other factory roller (alternating sides) with a threaded rod. The threaded rod shall be 0.750" (± 0.020") long by 0.5625" (+0.015" or -0.005") outside diameter hardened threaded (B&NF Class 1A) 3/16" stainless steel rod (ASTM A320).

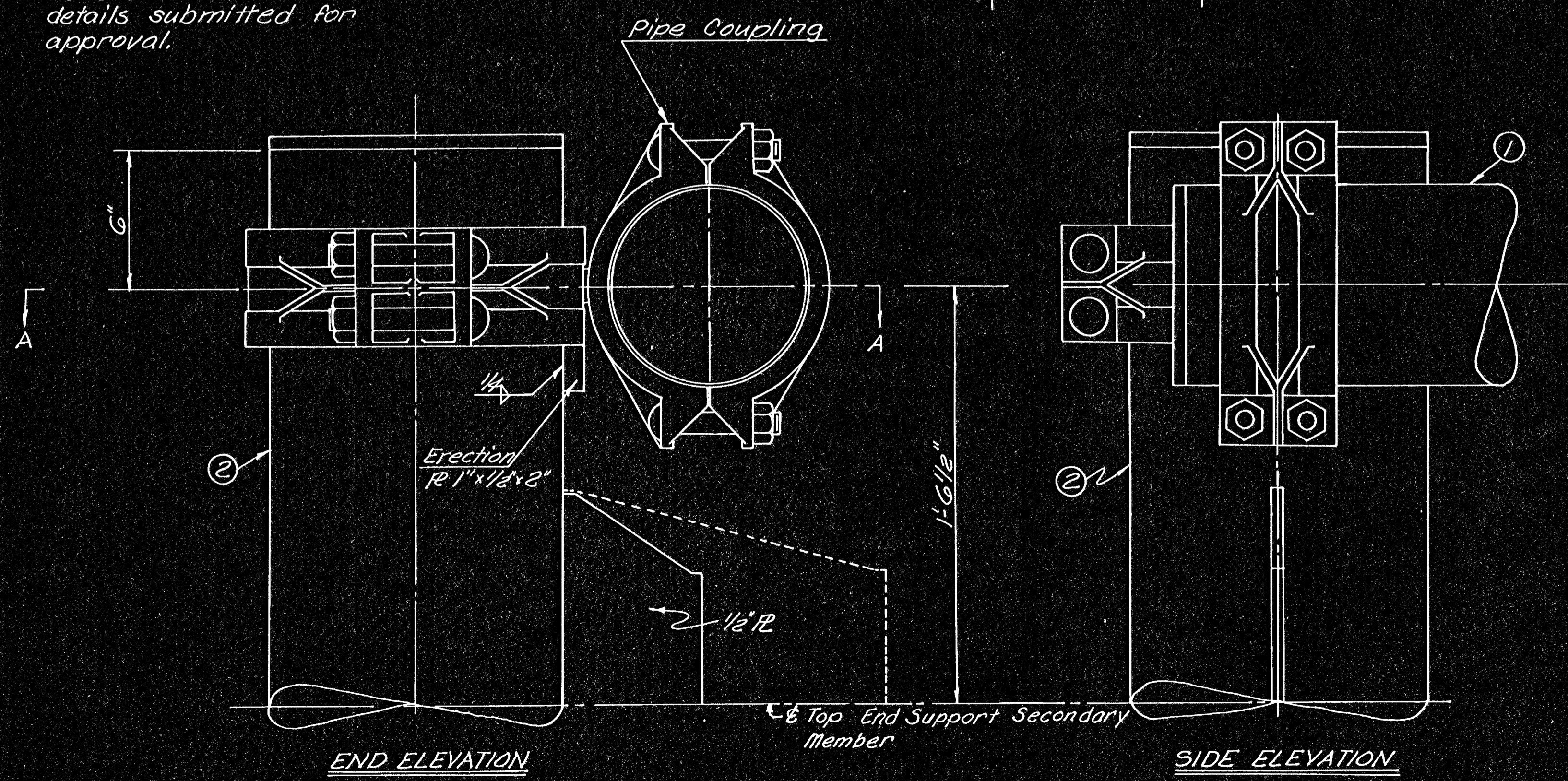
Pipe Dia.	Coupling Dimen.			Coupling Bolts*		Rollers per Coupling	Coupling Weight
	A	B	C	Qty.	Size		
8.625"	14"	5"	10 1/16"	4	7/8" x 5"	24	38.0
10.750"	16 1/2"	5"	12 1/16"	4	7/8" x 5"	32	44.0

\* Bolts shall be ASTM A183

Note: The type of pipe coupling used shall be shown on the shop details submitted for approval.

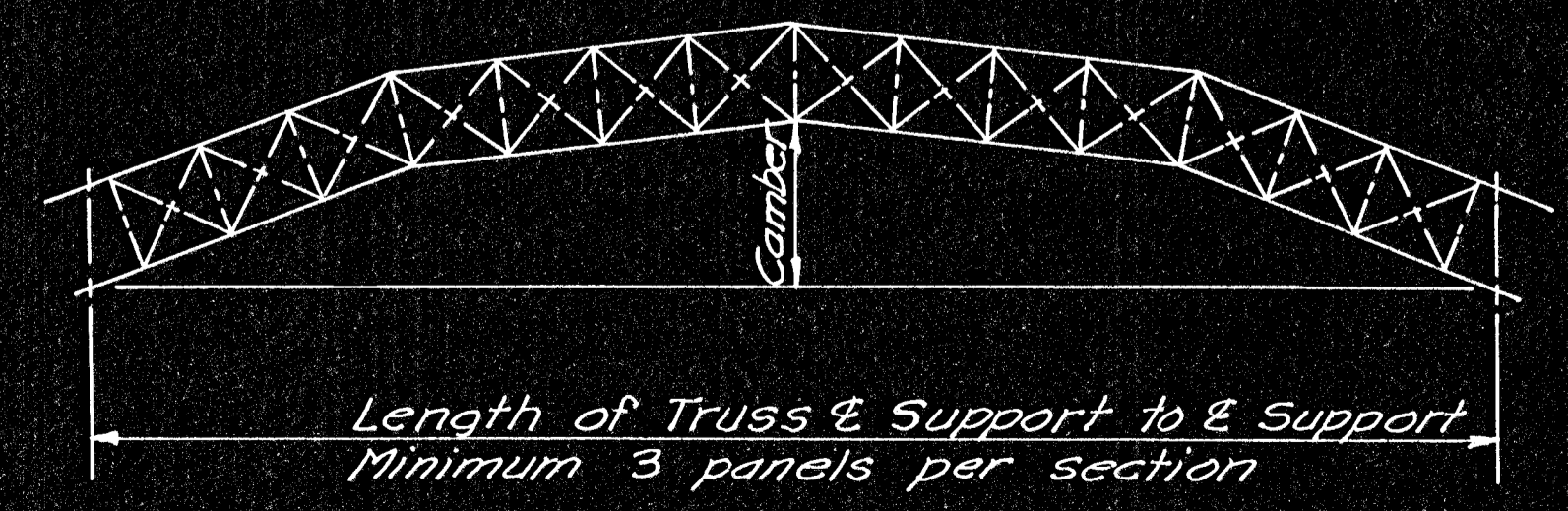


**TYPICAL SPLICE**  
[Camber Type(2)]



**END ELEVATION**

**SIDE ELEVATION**



**TRUSS CAMBER**

3					
2					
1					
NO.	DATE	REVISIONS	BY	APP'D	
DEPARTMENT OF TRANSPORTATION - KANSAS					
STANDARD STRUCTURAL SIGN SUPPORTS					
SPAN TYPE OVERHEAD					
ALUMINUM TRUSS					
TRUSS TO END SUPPORT CONNECTION					
AND CAMBER DETAILS 8-75					
SHEET NO. 127 OF 143	SCALE	APP'D	QUANTITIES	TRACED	RBA
DESIGNED BFM	DETAILS DDP	QUAN. CK.	TRACED	RBA	
DESIGN CK. RDM	DETAIL CK. RDM	QUAN. CK.	TRACED	RBA	