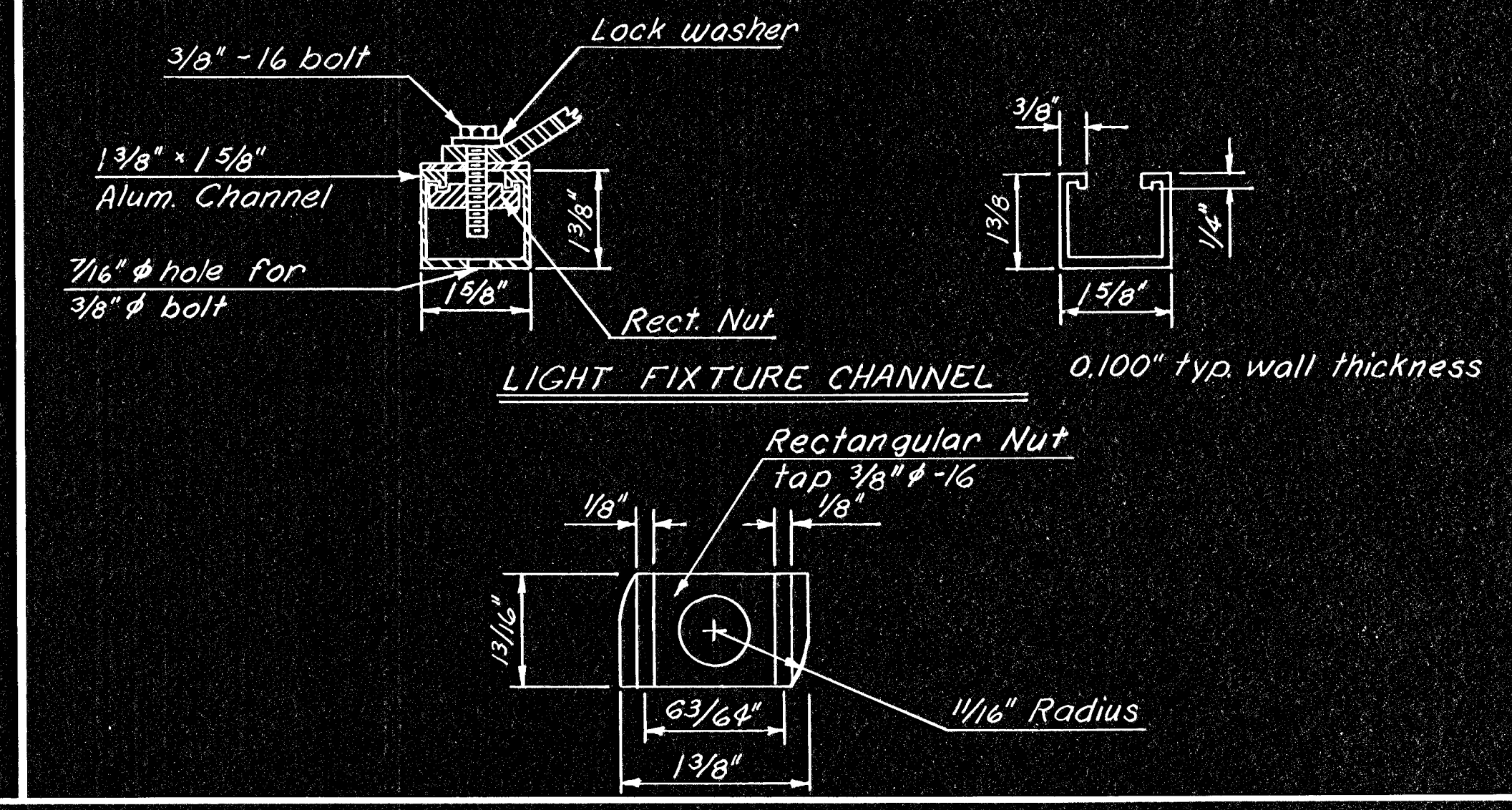
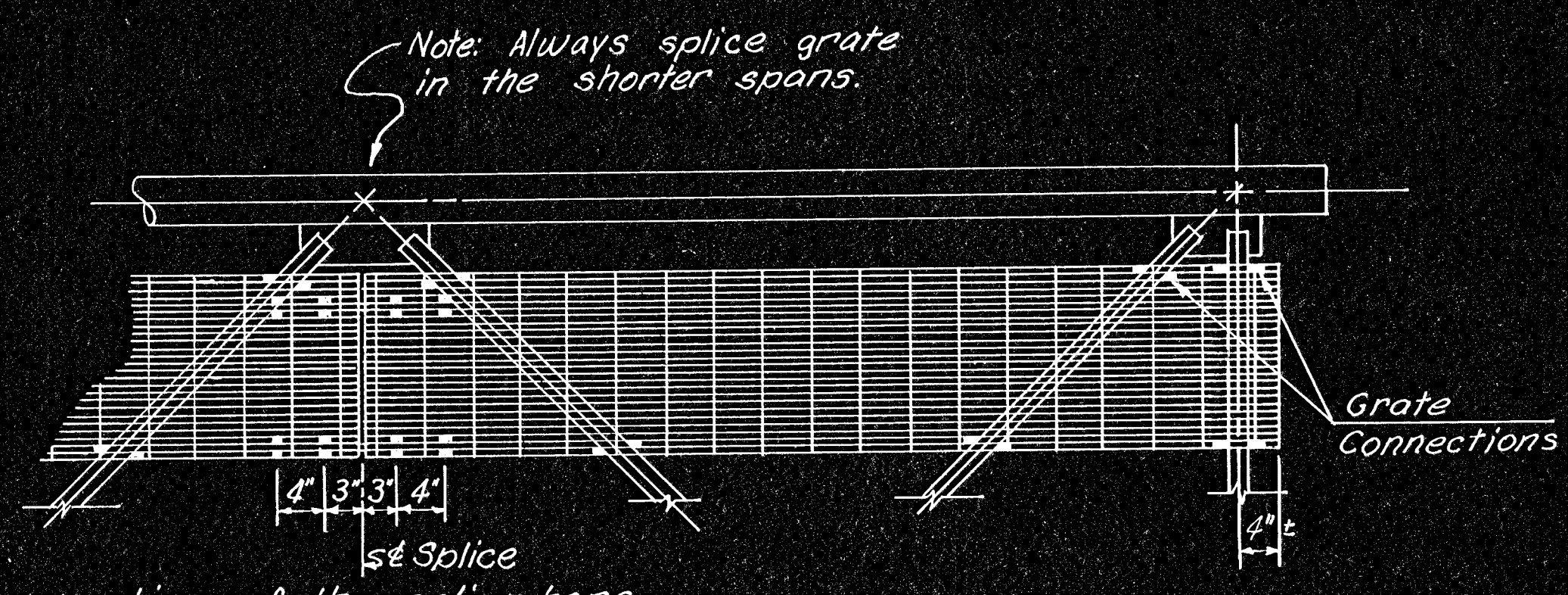


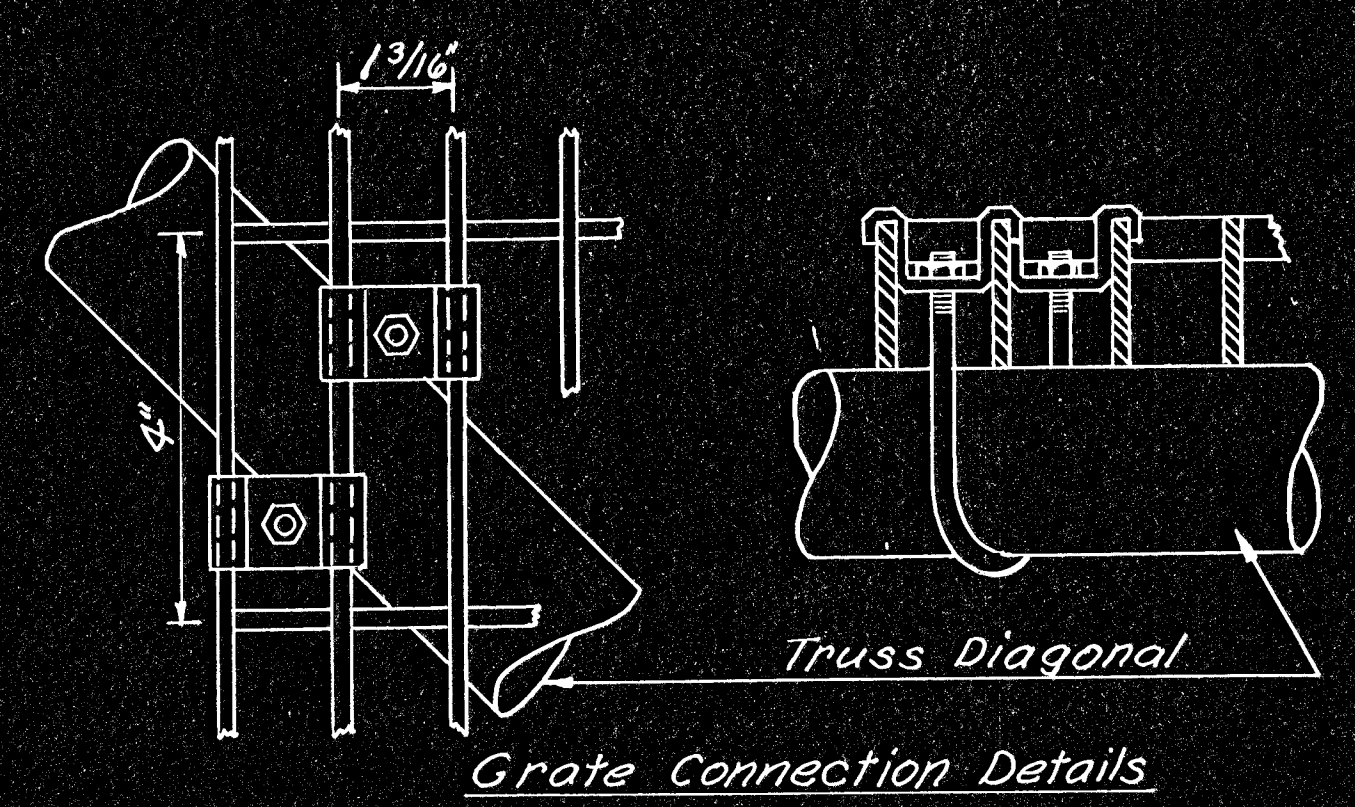
ALUMINUM HANDRAIL



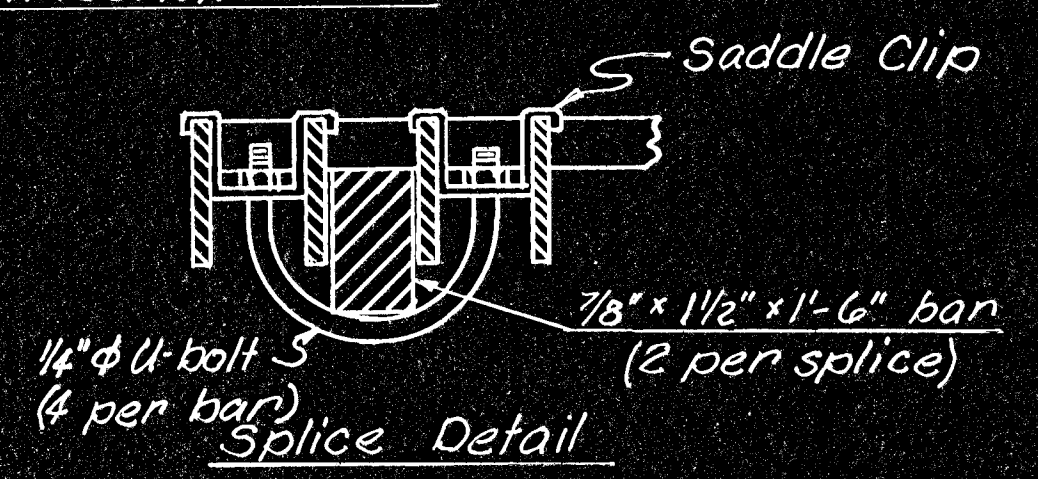
LIGHT FIXTURE CHANNEL 0.100" typ. wall thickness



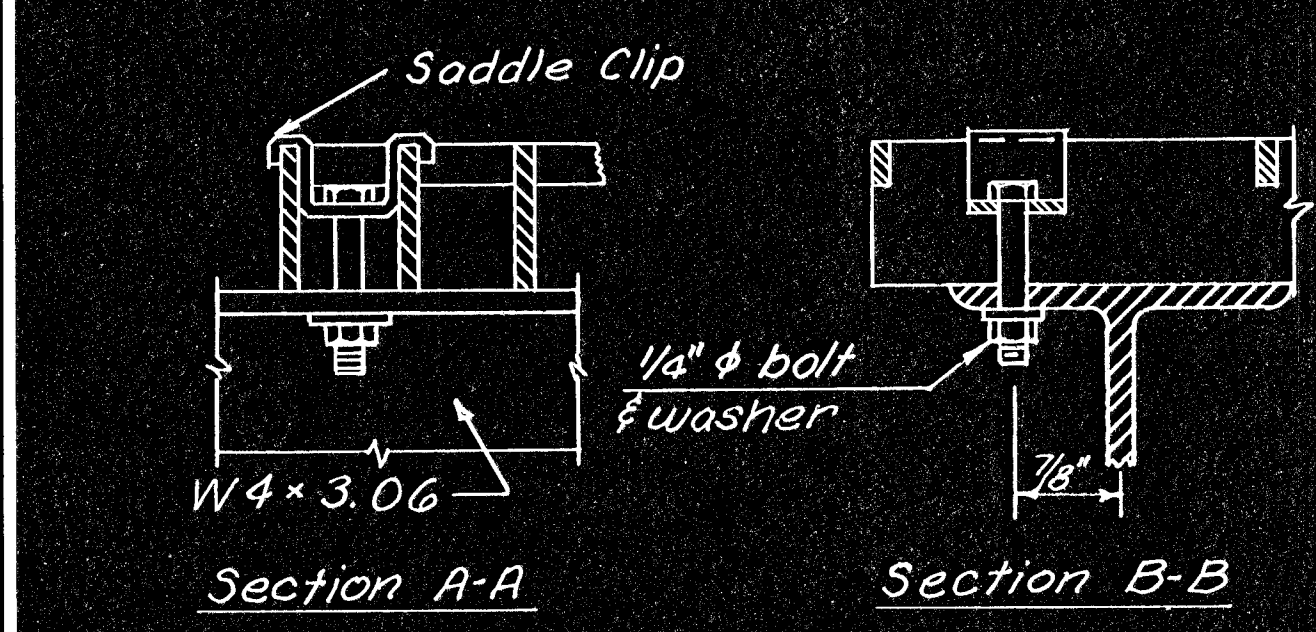
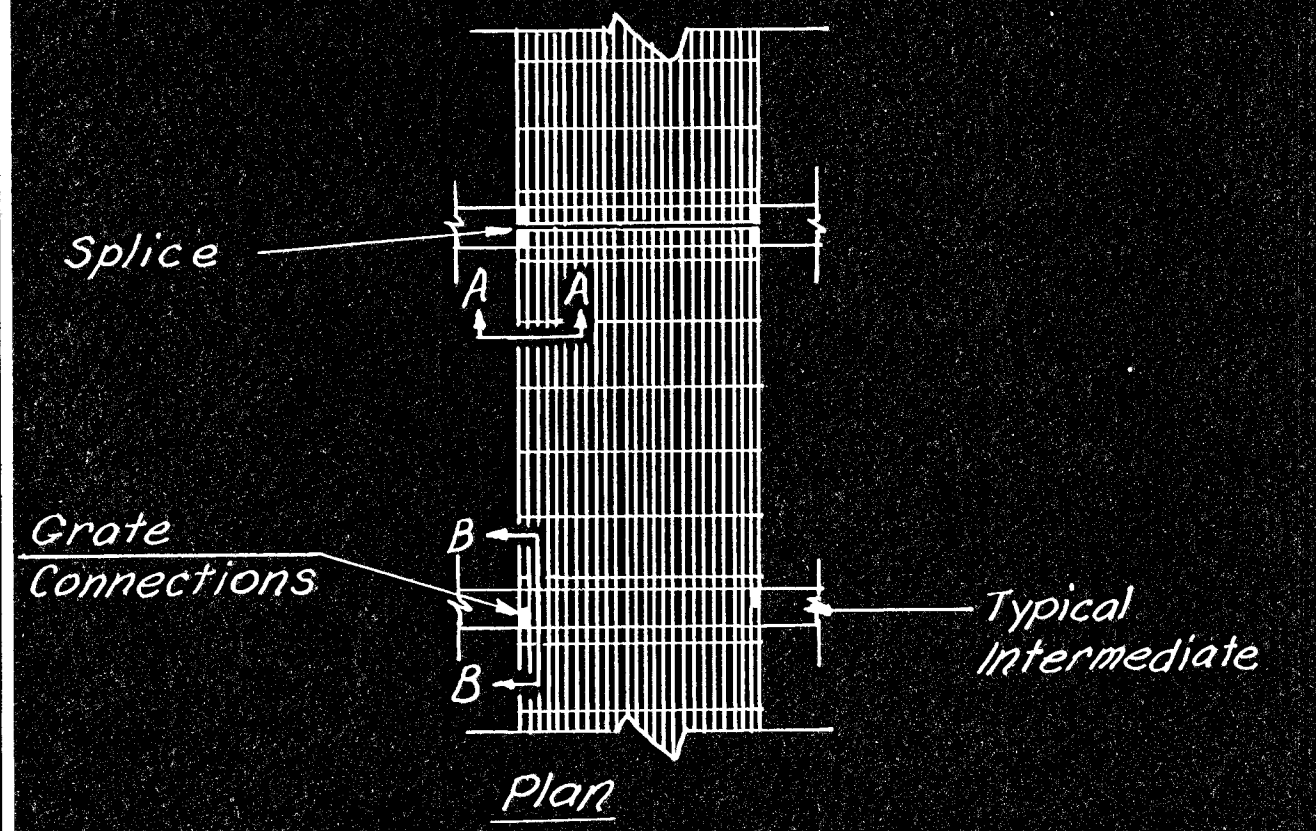
Note: The locations of the splice bars and the U-bolts shown above are nominal. Adjust as necessary to clear truss diagonals and grating cross bars. Plan



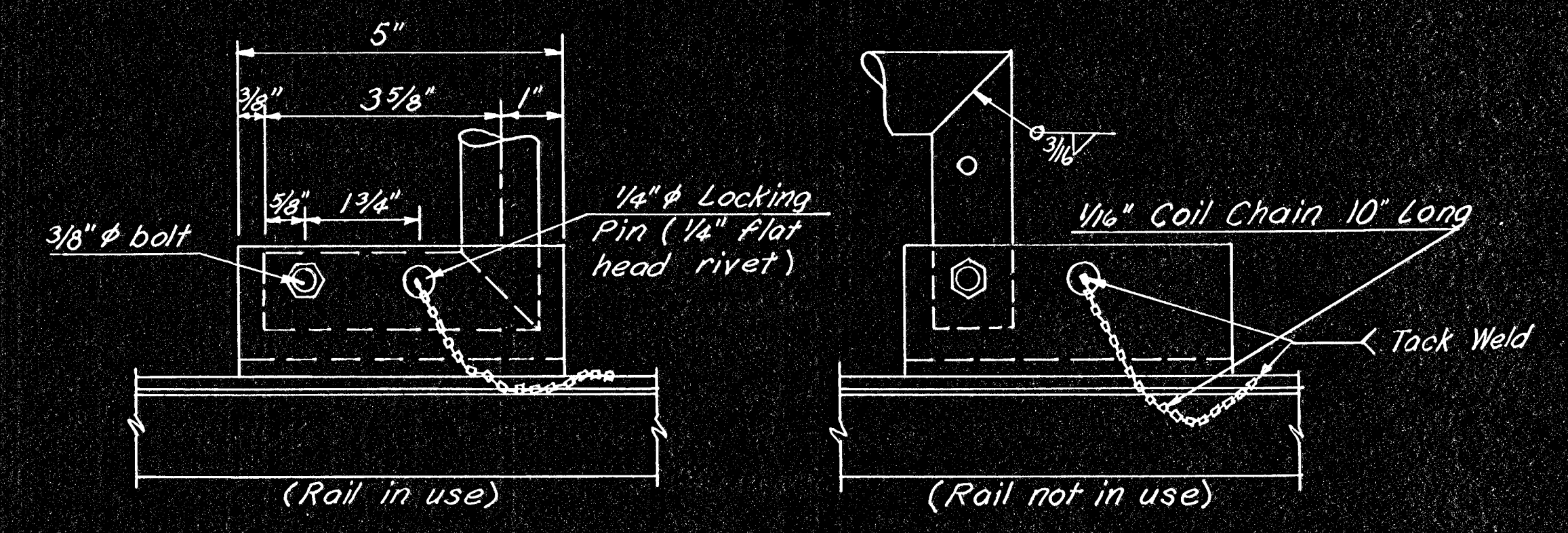
Truss Diagonal Grate Connection Details



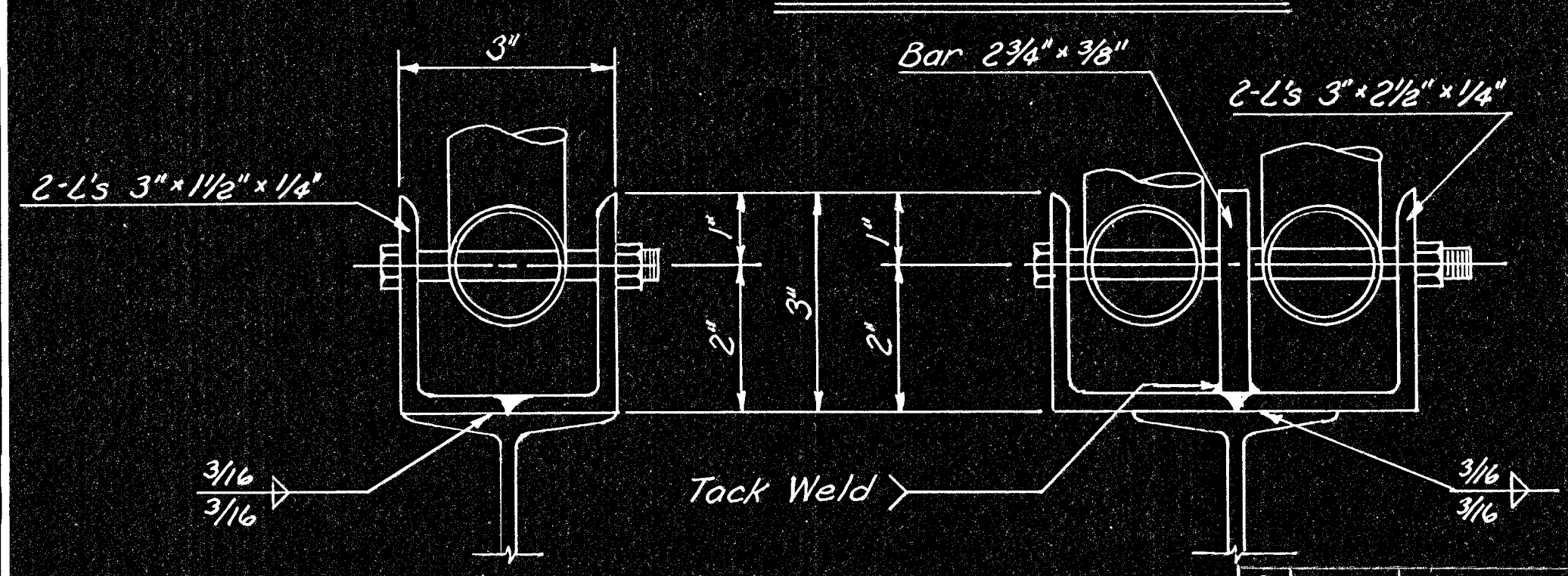
Splice Detail



EXTERIOR WALKWAY



HANDRAIL CONNECTIONS



NO.	DATE	REVISIONS	BY	APP'D
3				
2				
1				

DEPARTMENT OF TRANSPORTATION-KANSAS
 STANDARD STRUCTURAL SIGN SUPPORT
 SPAN TYPE OVERHEAD
 ALUMINUM SIGN MOUNTING AND
 WALKWAY DETAILS

DESIGNED *BFM* SCALE *JCD/DRE* APP'D
 DESIGN CK. *KFH* DETAIL CK. *KFH* QUAN. CK. *LES* TRACED *LES*
 TRACE CK. *DRE*