

GENERAL NOTES

DESIGN: A.A.S.H.T.O. Standard Specifications for Structural Supports for Highway Signs, Luminaires and Traffic Signals, 1975 Edition and subsequent revisions.

PIPE: Steel pipe for members ① & ② shall conform to A.S.T.M.-A 53 Type E or S grade B.

FLANGES: Slip-on Steel Welding Flanges, 150 lb. A.S.A. ASTM A181 grade I or II, Flat Faced.

PLATE: All steel plate shall conform to ASTM-A36.

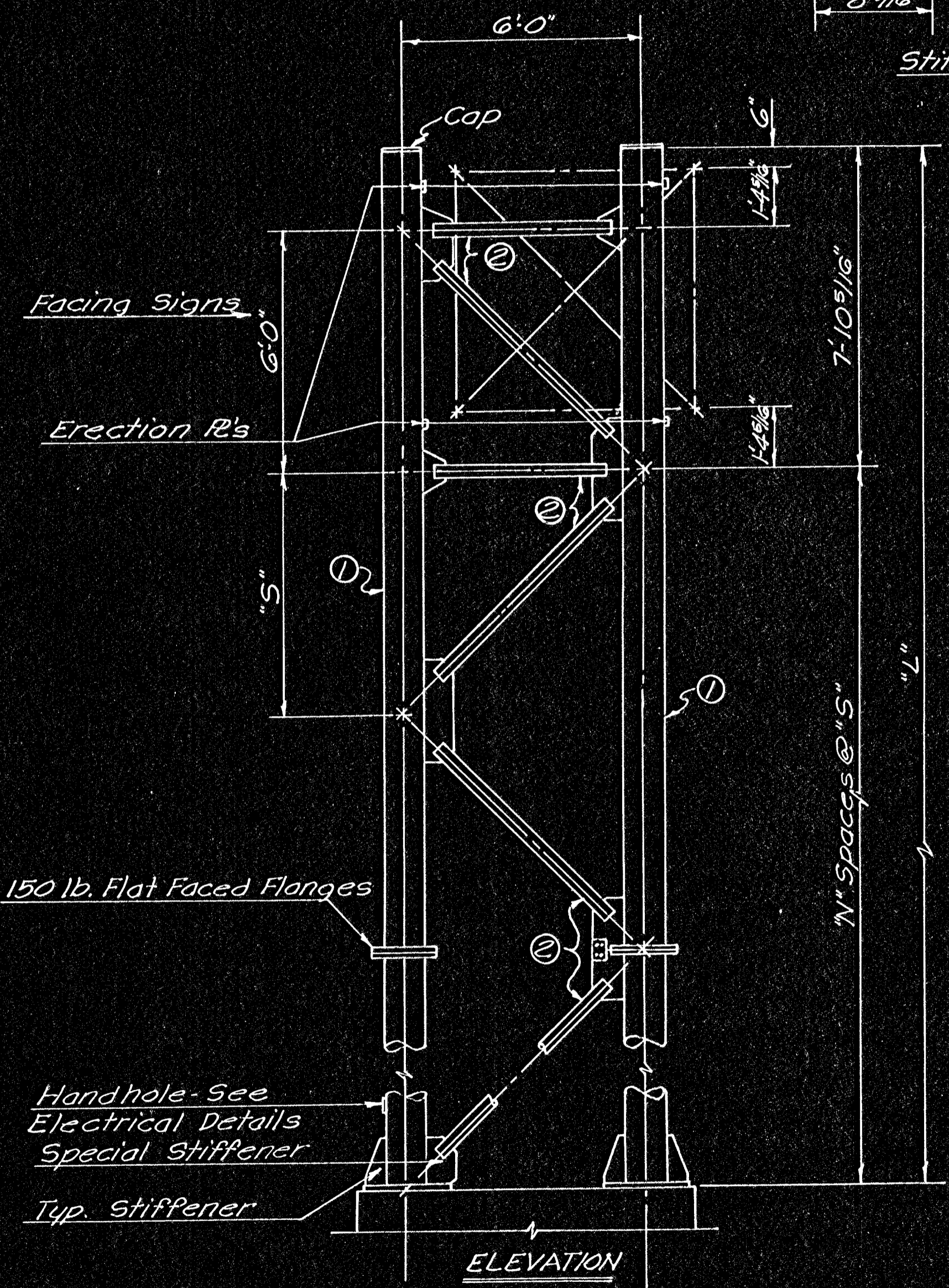
CAP: Caps shall be Gustin-Bacon No.70, or other approved flat cap. Caps shall be galvanized and shall be installed with set screws after galvanizing end support.

BOLTS: All High Strength bolts, nuts, and washers shall conform to A.S.T.M.-A 325 and shall be Hot Dipped galvanized to meet the requirements of A.S.T.M.-A 153, Class C.

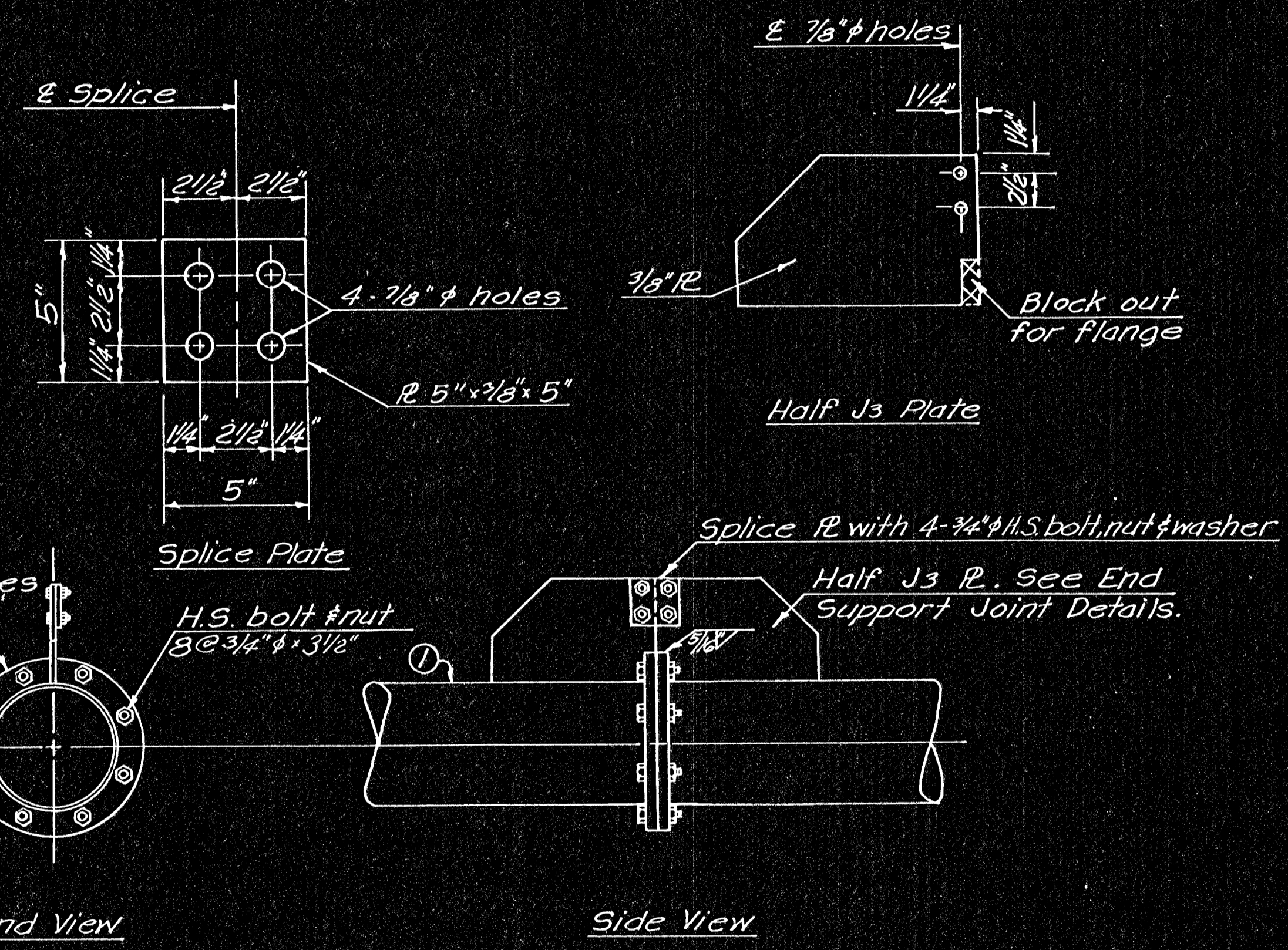
WELDING: All welding shall conform to Kansas Highway Comm. Standard Specifications and the latest edition of the AWS Specifications. Only electrode filler metal grade 70 shall be used.

GALVANIZING: All material shall be Hot-Dipped galvanized, according to ASTM-A123, after fabrication. Any damage to the coating shall be repaired after erection.

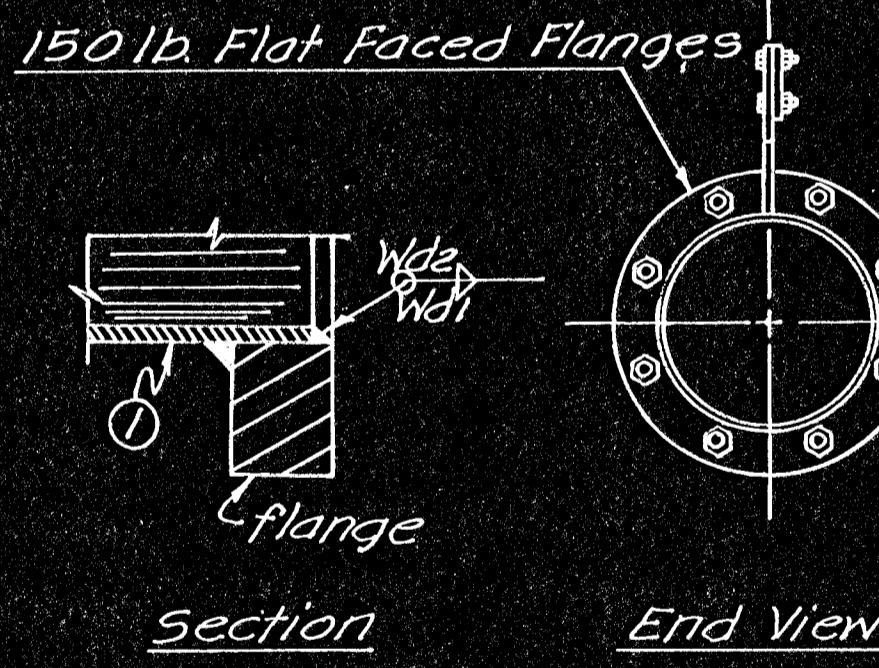
SHOP DRAWINGS: Before any fabrication is begun under the Contract, the Contractor or fabricator shall submit to the Engineer for approval, prints of complete shop drawings. These prints shall be submitted in triplicate for checking and seven copies shall be submitted for final approval and distribution unless more copies are requested. The contractor shall be responsible for the correctness of his drawings, and for shop fits and field connections, although the drawings may have been approved by the Engineer.



Stiffener Details



END SUPPORT SPLICE DETAILS (Optional)



Note: Member ① is 3.625" O.D. pipe
Member ② is 3.500" O.D. pipe
See Construction Layout for wall thickness, "N", "S" and "L".

Member	Fillet Weld	Anchor Bolt	Base R
Thickness	size	"d"	"t"
0.183	3/16"	1 1/2"	1 3/4"
0.250	1/4"	1 3/4"	2"
0.312	5/16"	2"	2 1/4"
0.406	3/8"	2 1/4"	2 1/2"
0.500	1/2"	2 1/4"	2 3/4"
0.594	3/4"	2 1/2"	3"

Note: Wdi depth to be equal to pipe thickness, build out to obtain full throat.

Note: ② diagonal will always start from top of End support as shown.

Note: All overhead sign structures shall be ground by means of a #6 A.W.G. copperweld ground wire, connected to a 3/4" x 10'-0" ground rod, unless otherwise noted.

3					
2					
1					
NO.	DATE	REVISIONS	BY	APP'D	
DEPARTMENT OF TRANSPORTATION-KANSAS STANDARD STRUCTURAL SIGN SUPPORTS SPAN TYPE OVERHEAD STEEL END SUPPORT FRAMING PLAN AND SPLICE DETAILS					
8-75					
SHEET NO. 130 of 143	SCALE	APP'D	QUANTITIES	TRACED	RBA
DESIGNED BEM	DETAILED KFH		QUAN. CK.	TRACE CK.	BEM
DESIGN CK. RDA	DETAIL CK. RDA				