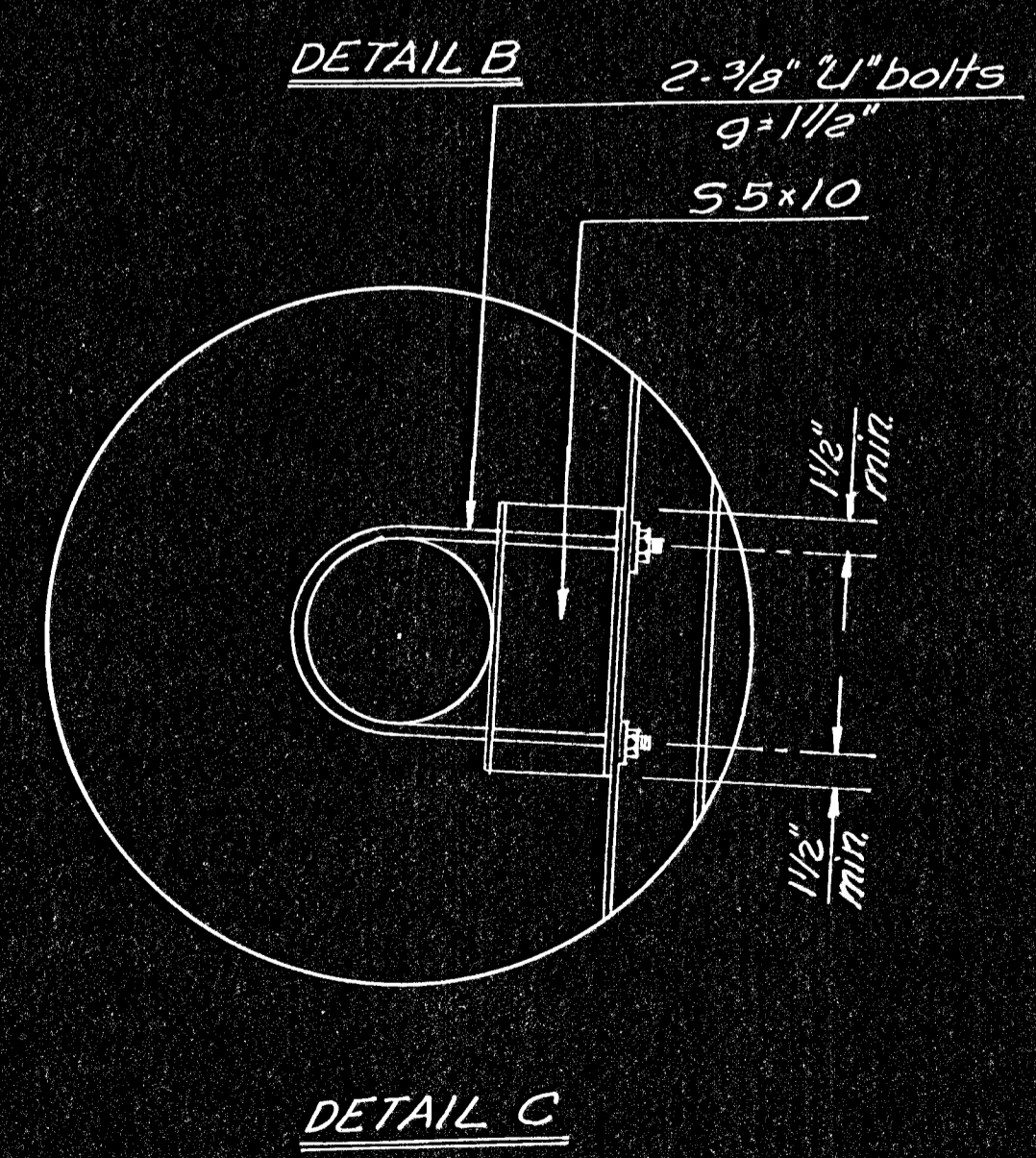
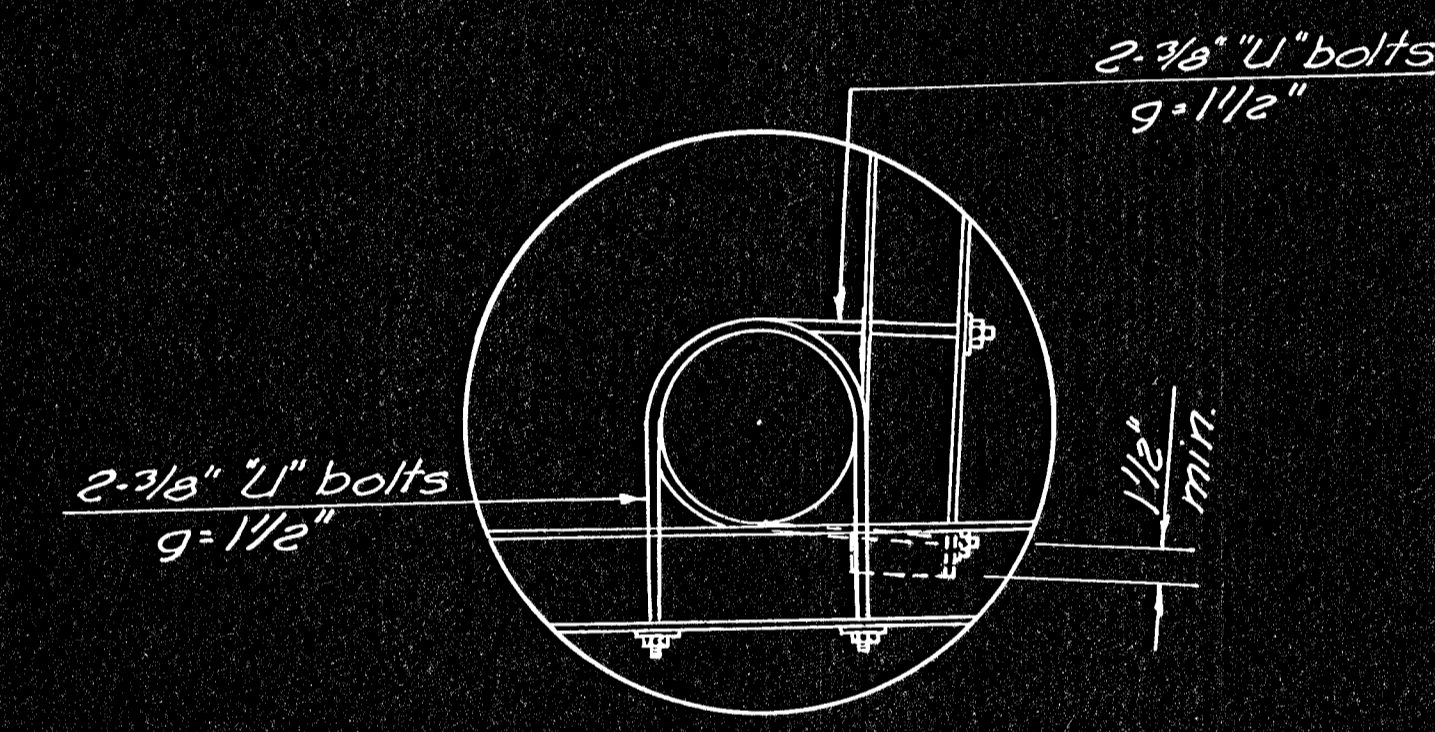
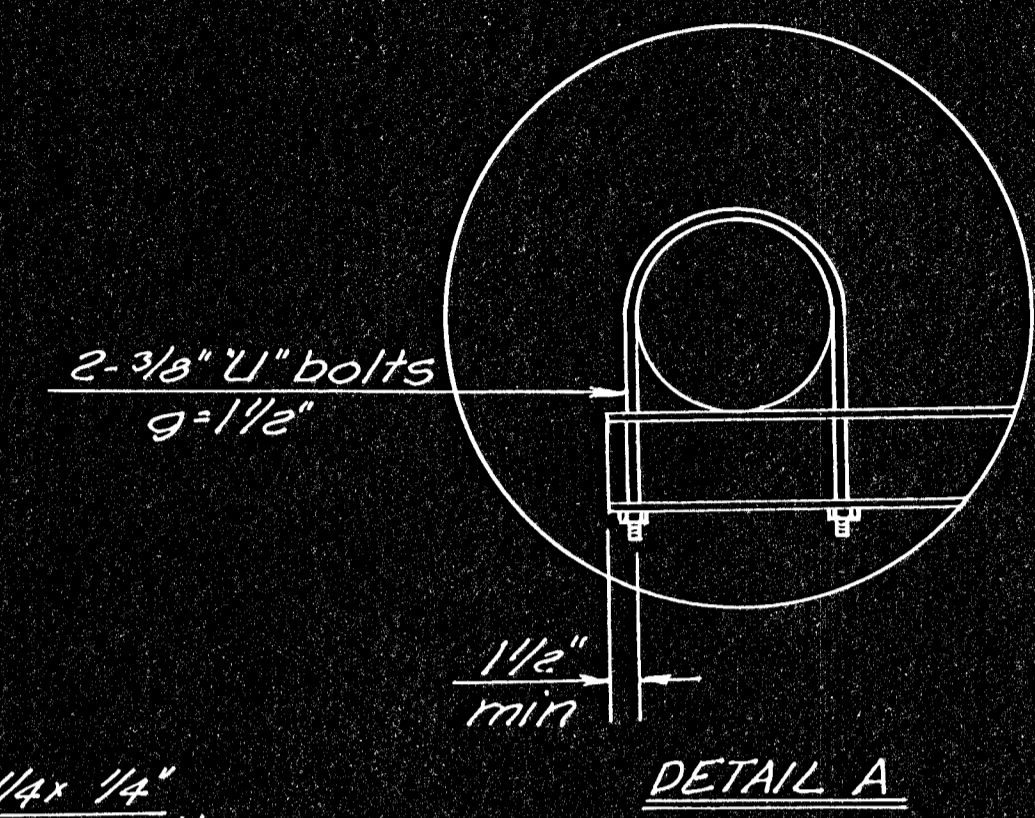
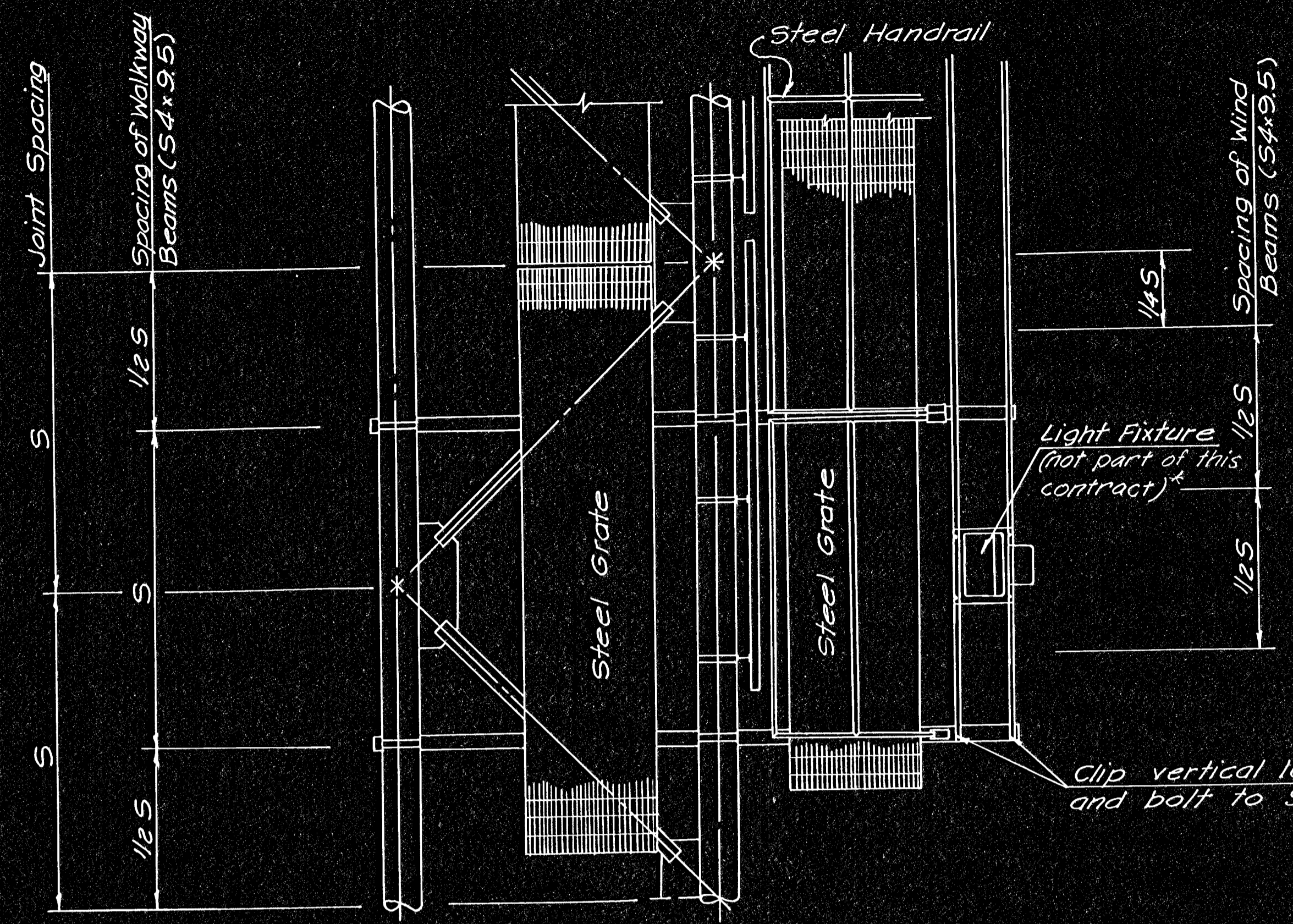


FHWA REGION NO.	STATE	PROJECT NUMBER	FISCAL YEAR	SHEET NO.	TOTAL SHEETS
7	KANSAS	(BC)96-87-K044-1(28)	1978	137	143



GENERAL NOTES

STEEL GRATE: Grate shall conform to ASTM-A36 and shall be pressure locked or welded design. It shall have 1/4"x1/8" bearing bars @ 1/4" ctrs. and 1/2"x1/2" cross bars @ 4" ctrs.

STEEL PIPE: Pipe for handrail shall conform to ASTM-A53 type F, E or S. The hydrostatic test, flattening test, and chemical test shall be waived.

STEEL TUBE: Tube shall conform to ASTM-A501.

STRUCTURAL STEEL: All shapes and plates shall conform to ASTM-A36.

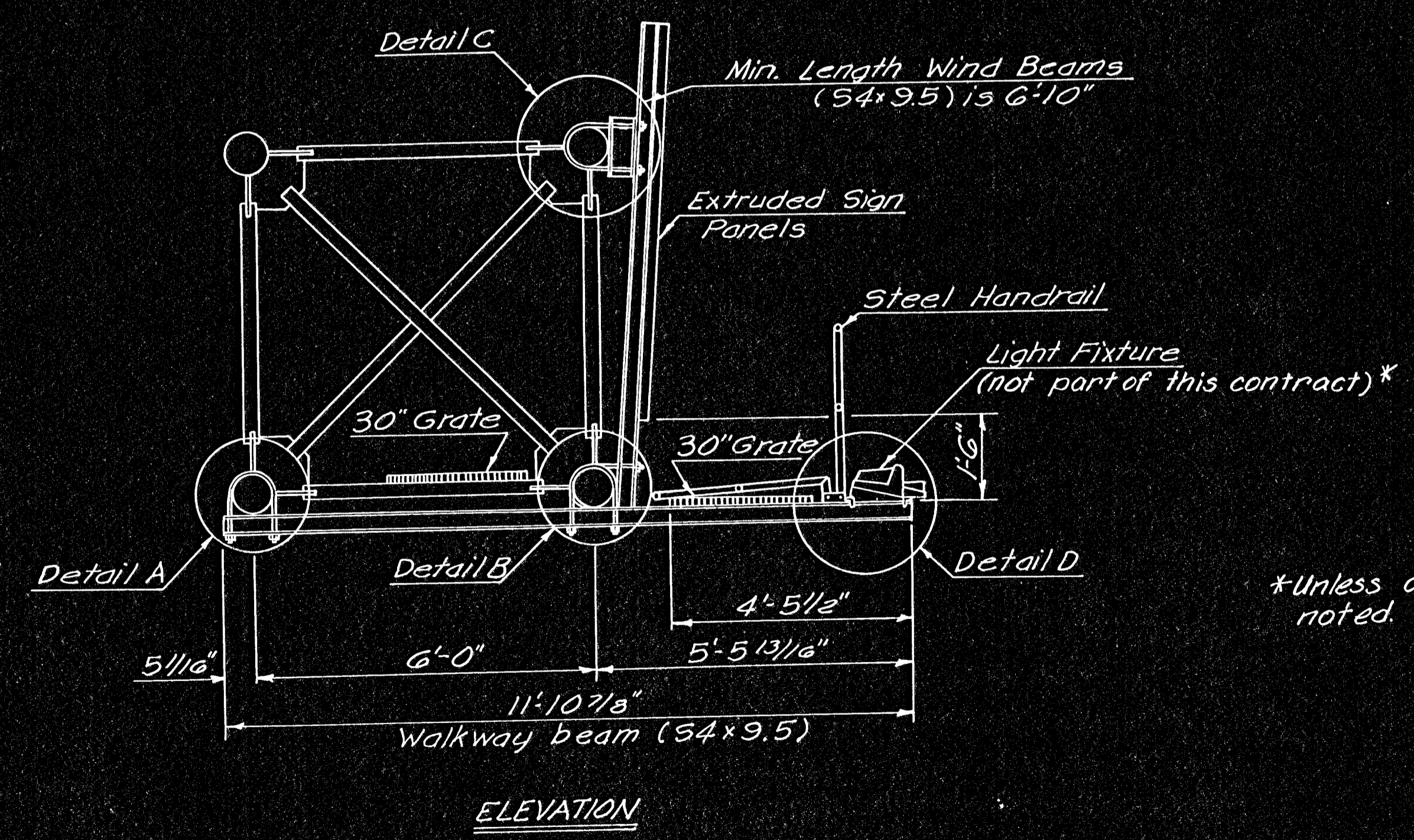
BOLTS: All Miscellaneous Fasteners shall conform to Kansas Highway Comm. Standard Specifications and shall be coated.

GALVANIZING: All material shall be Hot-Dipped galvanized according to ASTM-A123, after fabrication. Any damage to coating shall be repaired after erection.

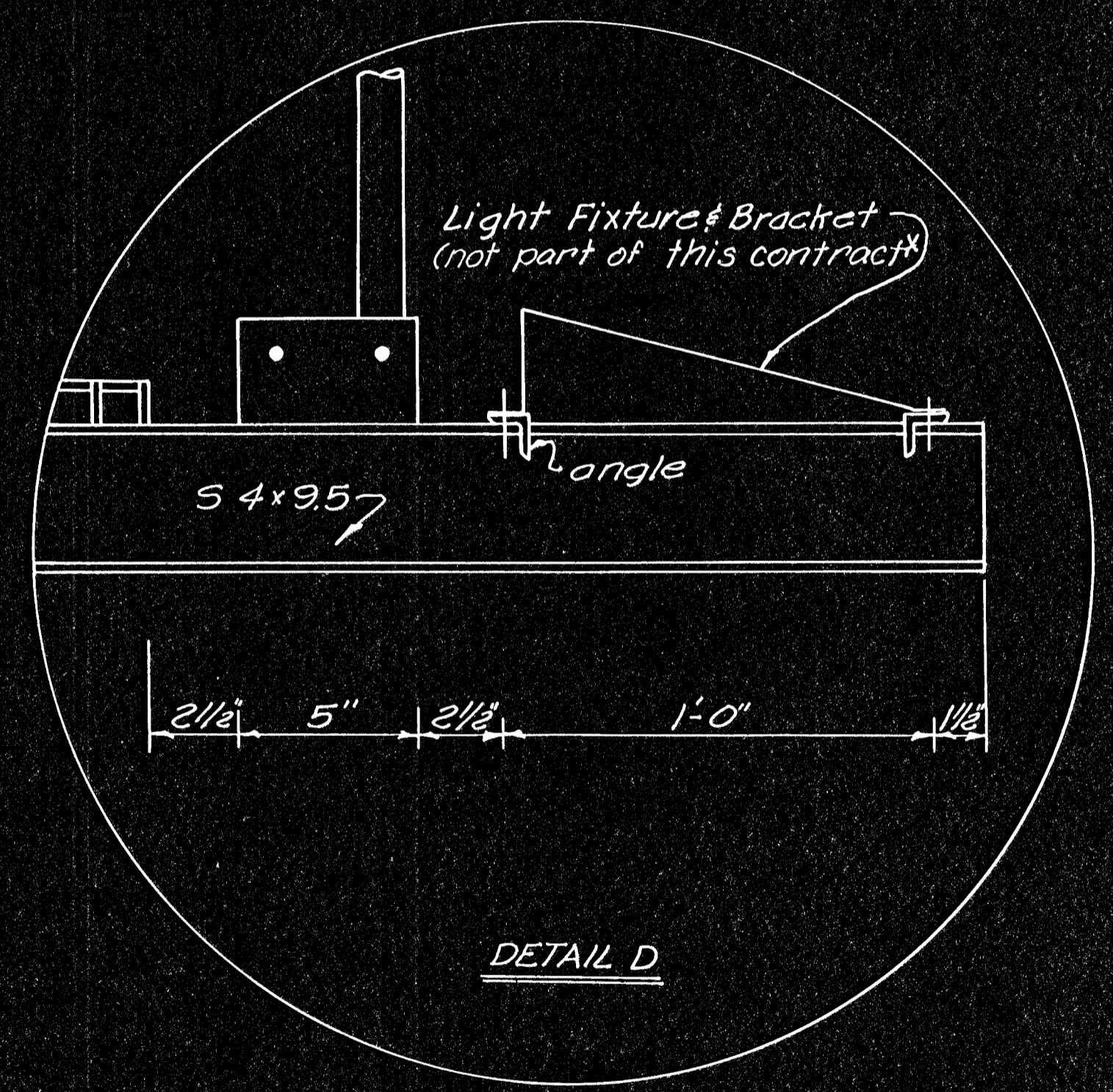
WELDING: All welding shall conform to Kansas Highway Comm. Standard Specifications and the latest edition of the AWS Specifications. All welds shall be 1/4" continuous fillet welds unless otherwise noted.

Note: "S" varies see truss details for dimensions.

PLAN
Only lower truss members shown.



*Unless otherwise noted.



3					
2					
1					
NO.	DATE	REVISIONS	BY	APP'D	
DEPARTMENT OF TRANSPORTATION-KANSAS					
STANDARD STRUCTURAL SIGN SUPPORTS					
SPAN TYPE OVERHEAD					
STEEL SIGN MOUNTING AND					
WALKWAY DETAILS					
8-75					
SHEET NO. 137 OF 143	SCALE	APP'D	QUANTITIES	TRACED	RBA
DESIGNED BY BFM	DETAILED JCD				
DESIGN CK. KEH	DETAIL CK. KEH	QUAN. CK.		TRACE CK.	BFL