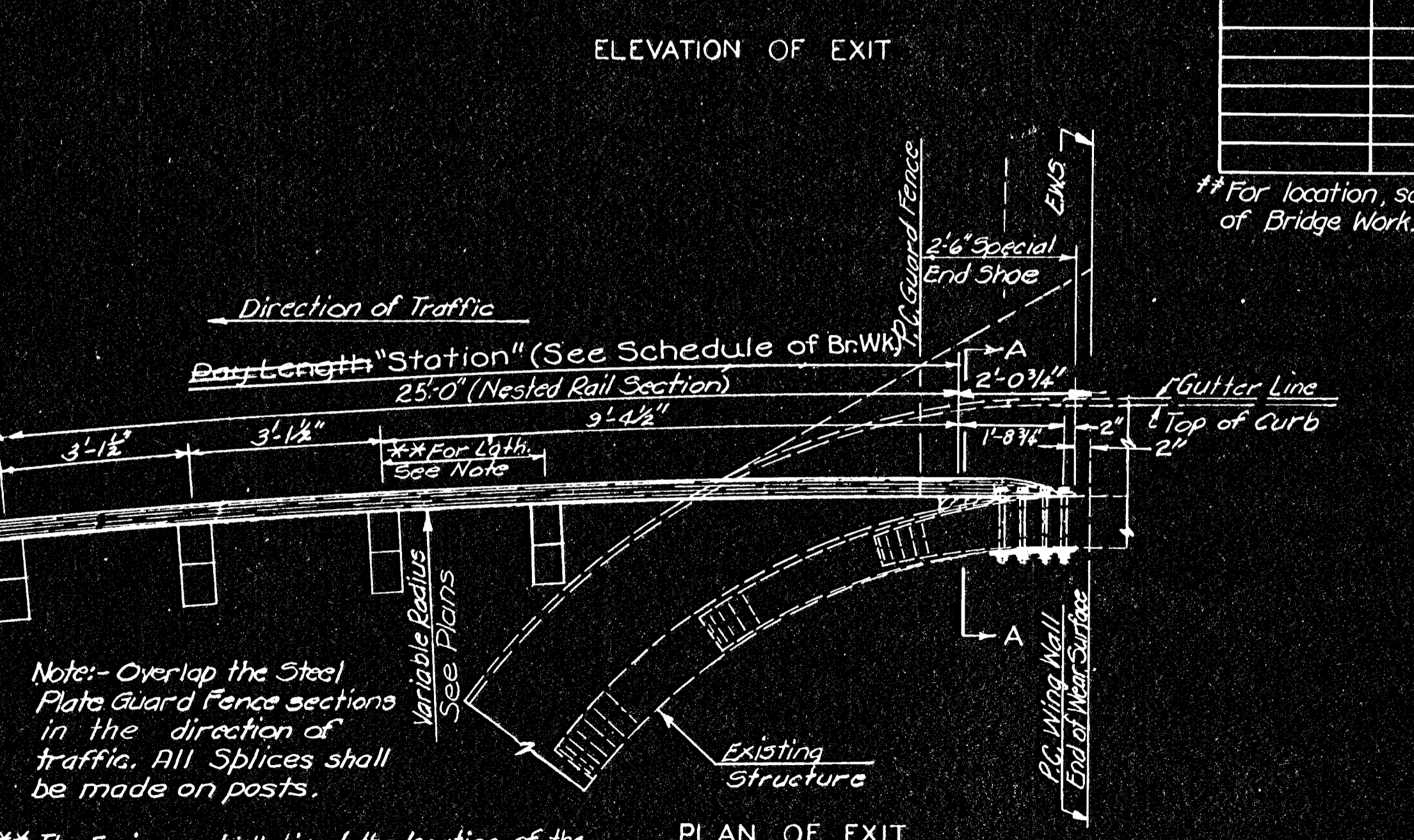
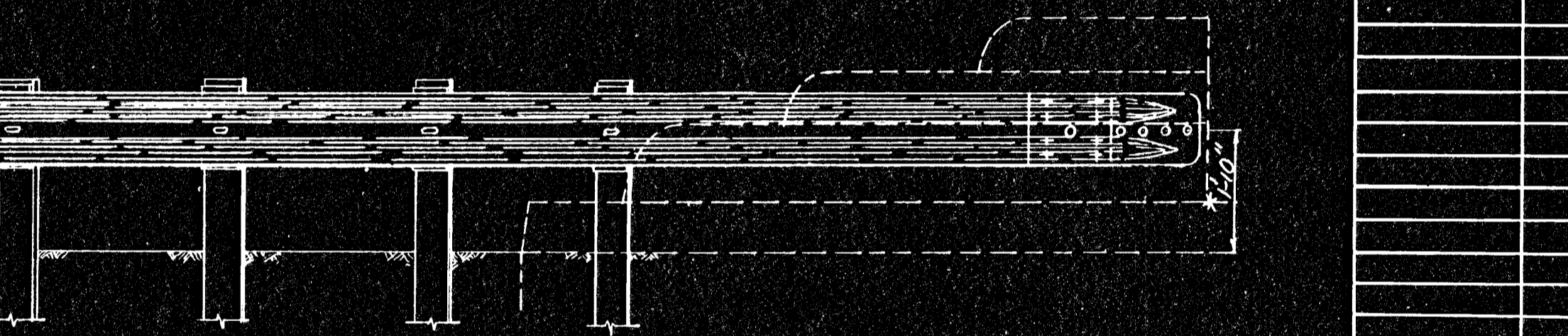
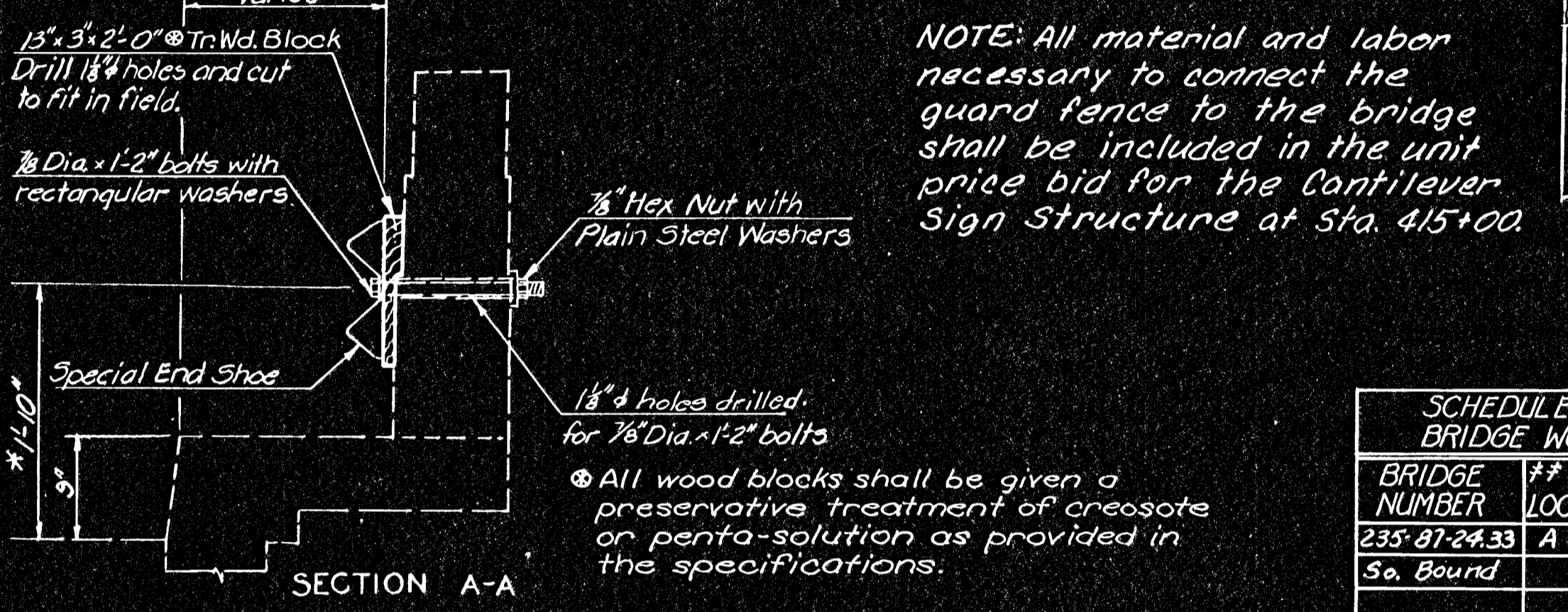
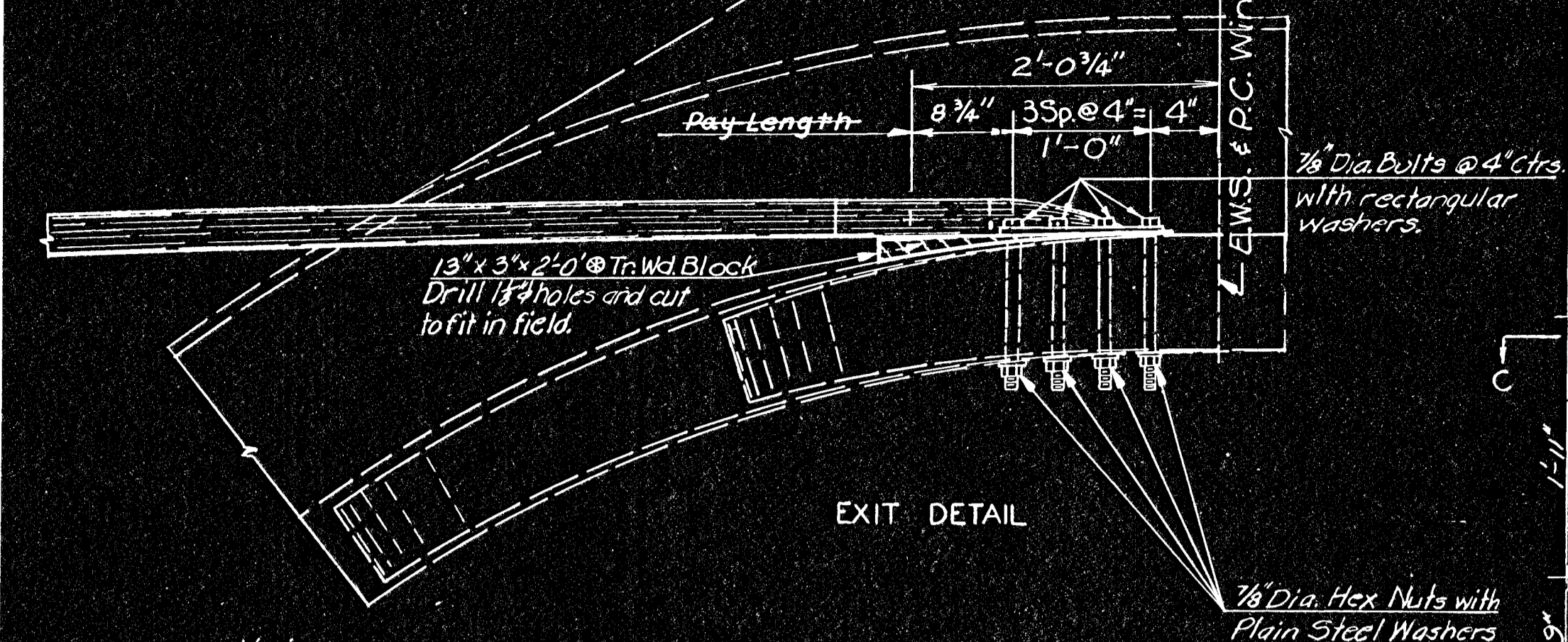
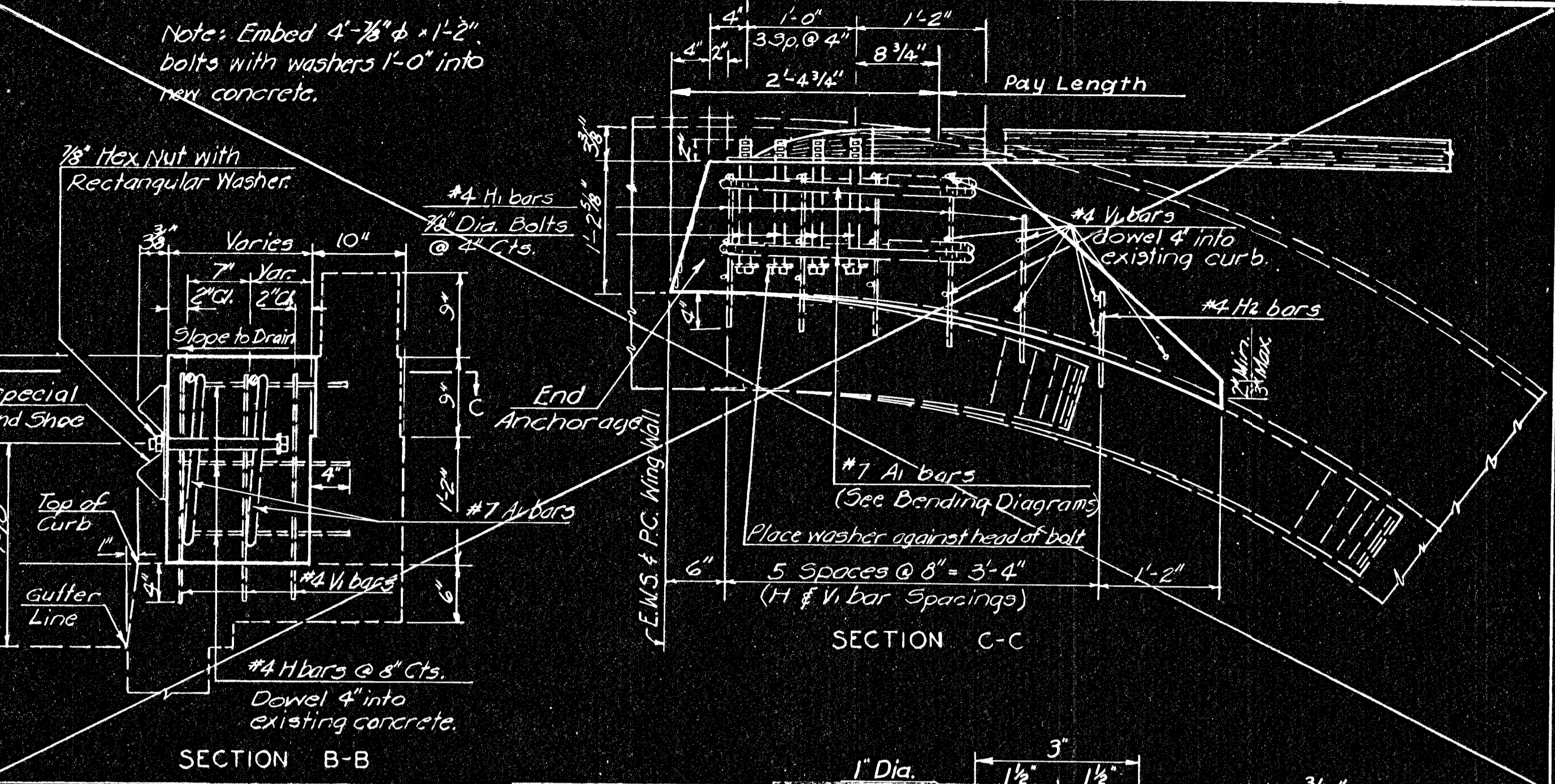


\*Note: Dimension has been increased by one inch to accommodate present or future overlay.

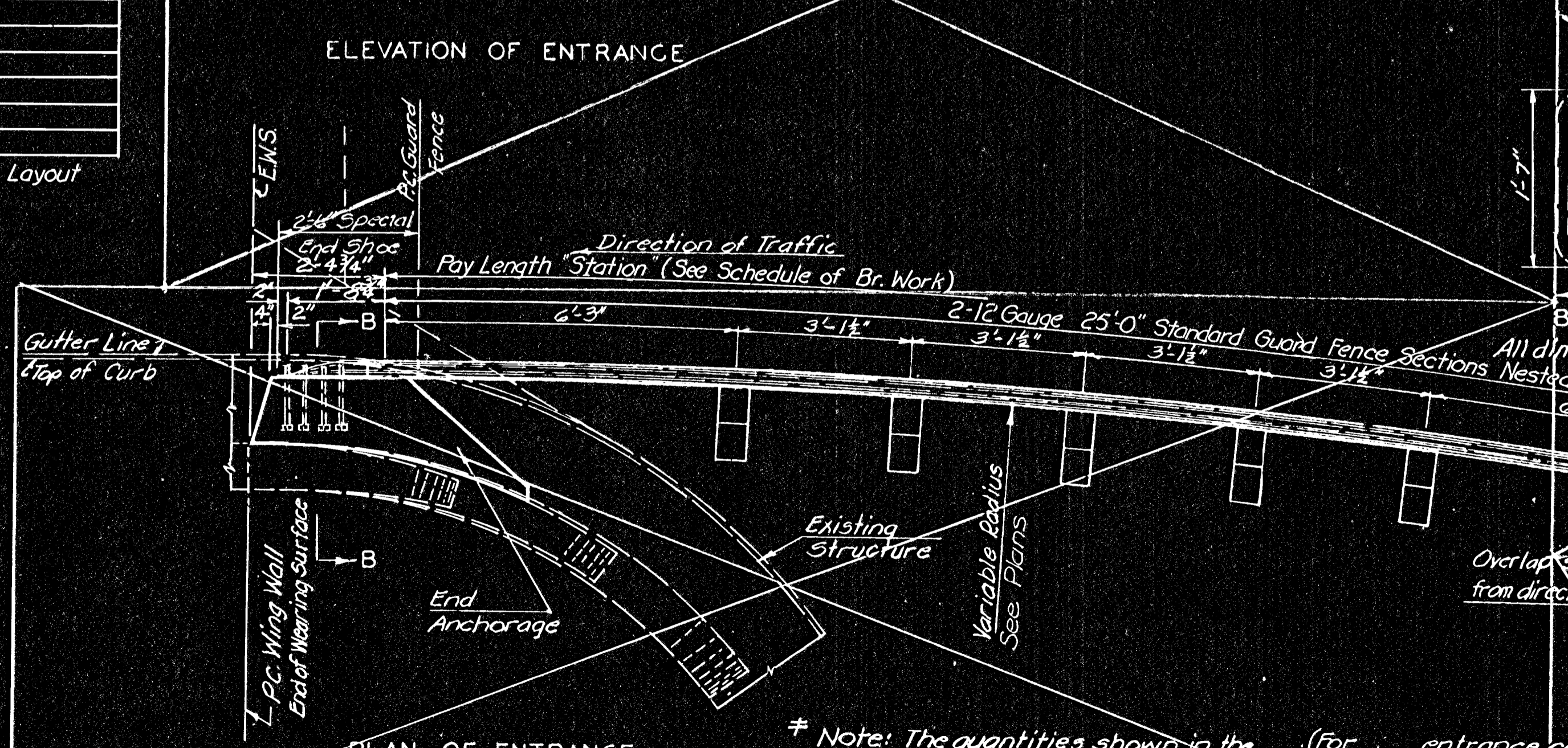
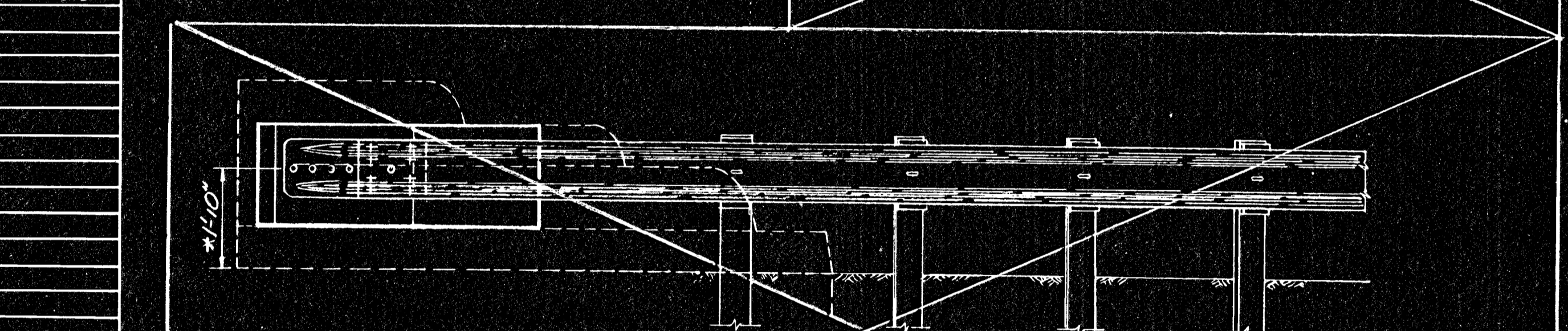


Note: Overlap the Steel Plate Guard Fence sections in the direction of traffic. All Splices shall be made on posts.  
 \*\* The Engineer shall direct the location of the nearest fence post to clear the existing structure at a distance not to exceed 6'-3" from the Pay Length slot of the Special End Shoe. A 1/2" bolt hole shall be field drilled in the guard fence to fit construction.



SCHEDULE OF BRIDGE WORK		
BRIDGE NUMBER	LOC.	PAy LENGTH STATION
235-87-24-33	A	415+68.69
So. Bound		

\*\* For location, see Layout of Bridge Work.



\* Note: The quantities shown in the Bill of Materials were computed as an aid to the Contractor in estimating the cost of the project.

FHW REGION NO.	STATE	PROJECT NO.	FISCAL YEAR	SHEET NO.	TOTAL
7	KANSAS	(BC)96-87-044-1(28)	1978	140	143

DESIGN NOTE:  
 Attachment for: monolithic free-standing abutments  
 Direction of Traffic: One-Way Two-Way

GENERAL NOTES  
 UNIT STRESSES:  $f_c = 1200 \text{ psi}$ ;  $f_c = 3000 \text{ psi}$ ;  $f_s = 20,000 \text{ psi}$   
 TRAFFIC: Traffic shall be carried through construction. (See traffic control sheets)  
 CONCRETE: Class A Concrete shall be used throughout. Bevel all exposed edges with a 3/4" triangular molding unless otherwise noted.  
 REINFORCING: All dimensions relative to reinforcing steel are to centerline of bar unless otherwise noted.  
 BRIDGE NUMBER PLATE: If Bridge Number Plate is obscured by construction, a new plate shall be required and placed as directed by the Engineer. This plate shall not be paid for directly, but shall be subsidiary to Steel Plate Guard Fence (Galv.).

DIMENSIONS: Dimensions and stations of existing structures are taken from old plans and shall be verified by the Contractor in the field prior to construction.  
 DRILLING AND GROUTING: All materials, drilling and grouting required to attach the Special End Shoe to the existing structure shall not be paid for directly, but shall be subsidiary to Steel Plate Guard Fence (Galv.).

SPECIAL END SHOE: Special End Shoe shall be 10 gauge steel and galvanized in accordance with ASTM Designation A525 with coating class 2.50. The shoe has the same section as through beam guardrail. Special End Shoe shall be as shown on Std. Cd. Fc, Sh, and shall be subsidiary to Steel Plate Guard Fence (Galv.).

BOLTS: All bolts, nuts and washers are to be galvanized in accordance with subsection 1006.16 of the Standard Specifications, and shall be subsidiary to Steel Plate Guard Fence (Galv.).

STEEL PLATE GUARD FENCE: One section of the two used in Nested Rail Section shall be subsidiary to bid item Steel Plate Guard Fence (Galv.).

ALIGNMENT OF GUARD FENCE ON APPROACH TO BRIDGE: For alignment of guard fence on approach to bridge, see Street Nos. Const. Layout

BILL OF REINFORCEMENT FOR ONE ENTRANCE CONNECTION			
Straight Bars			
Mark	Number	Size	Length
H1	15	#4	1'-7"
H2	3	#4	0'-10"
V1	11	#4	2'-1"
Bent Bars			
Mark	Number	Size	Length
A1	2	#7	8'-10"



KANSAS DEPARTMENT OF TRANSPORTATION			
STEEL PLATE GUARD FENCE			
CONNECTION TO BRIDGE			
TYPE-E			
NO.	DATE	REVISIONS	BY APP'D
DESIGNED		QUANTITIES	TRACED
DESIGN CH.		DETAIL CH.	

BILL OF MATERIALS	
Class A Concrete	Cu. Yds.
Reinforcing Steel	Lbs.