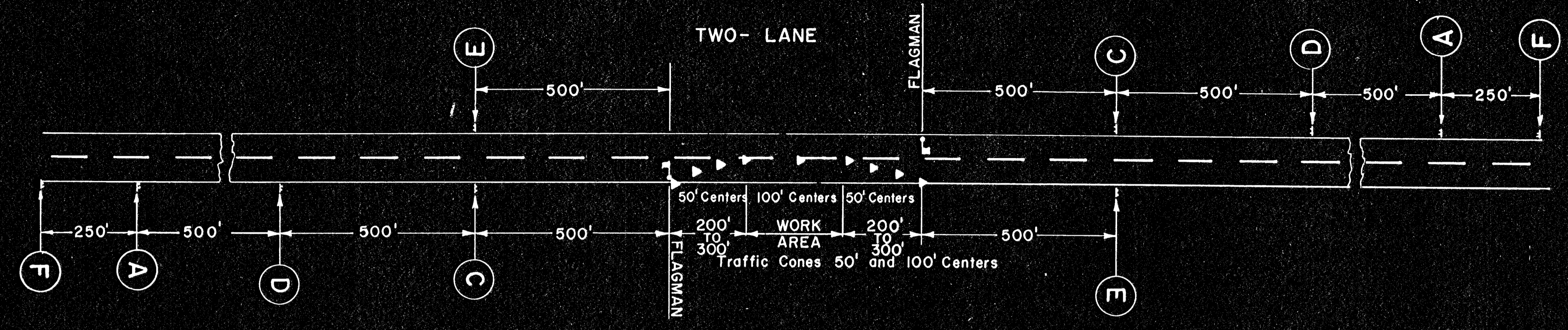


# TRAFFIC CONTROL DEVICES

## FOR CONSTRUCTION WORK ADJACENT TO ROADWAY AND MINOR SURFACING WORK ON A TWO AND FOUR LANE HIGHWAY

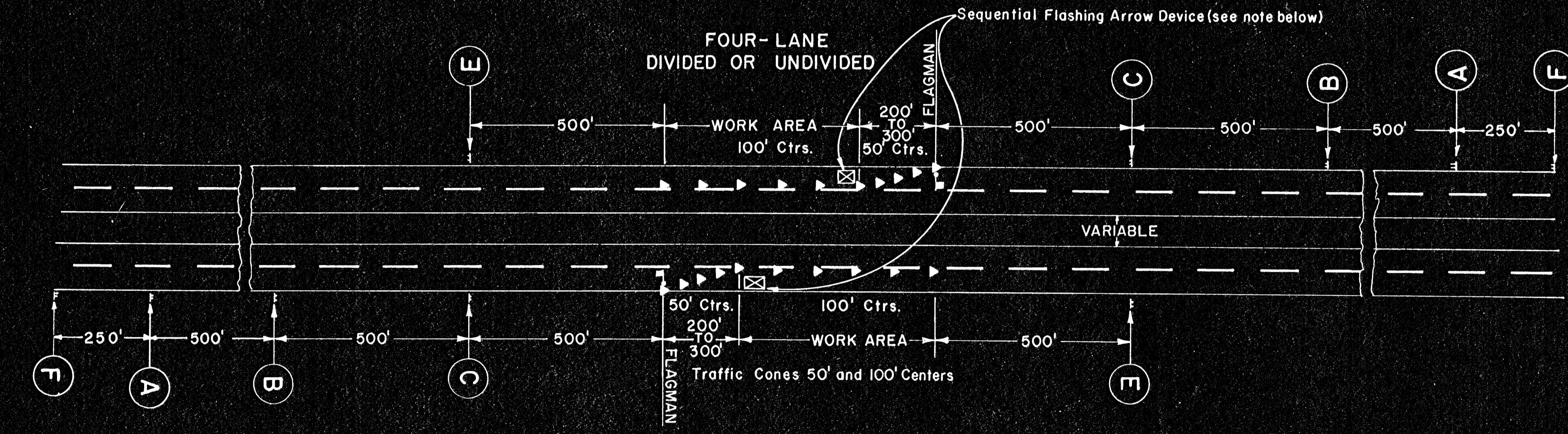
FHWA REG	STATE	PROJECT NO.	YEAR	SHEET NO.	TOTAL SHEETS
7	KANSAS		1978	143	143

PROJ. NO. (BC)96-87 K-044-(128) PARTS I & II

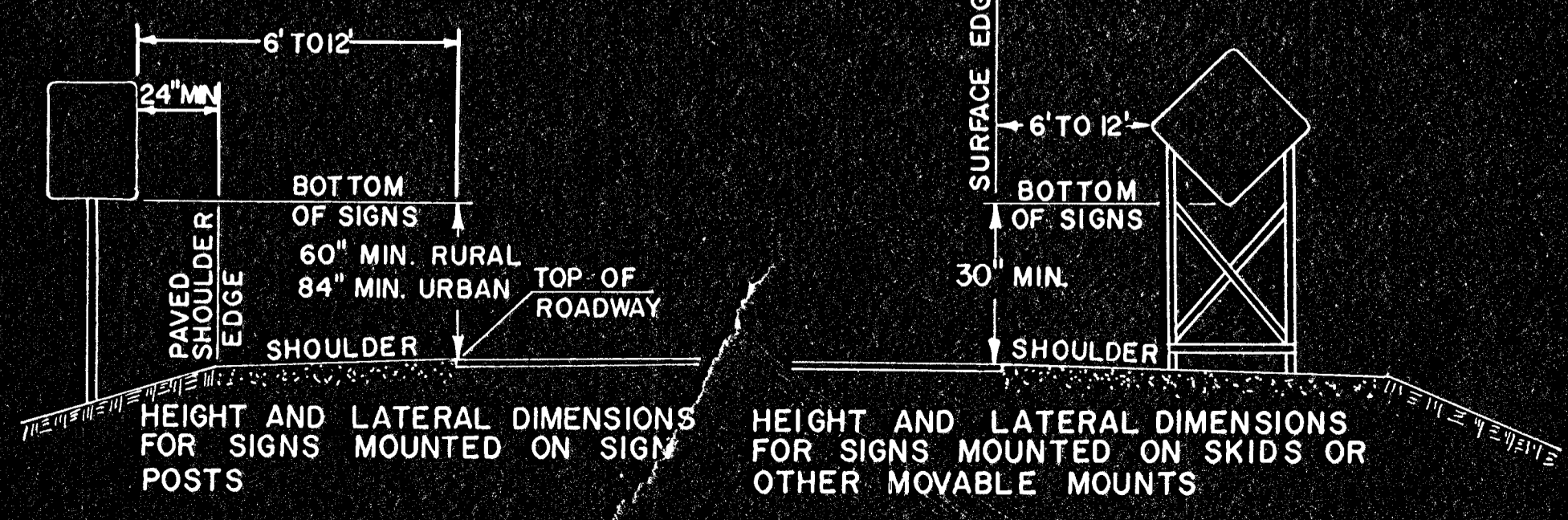


**NOTE:**  
 ReflectORIZED Drums may be substituted for Type I or II Barricades, or Traffic Cones. Yellow Lights placed on drums shall be the type as shown by Traffic Control Device Standard No. 752.  
 Due to existing conditions, Type B High Intensity Yellow Flashing Warning Lights may be required on signs (A), (B), (C) and (E) as deemed necessary by the Engineer. When used, they shall be paid for as extra work.  
 ☉ = Type B High Intensity Yellow Flashing Warning Light

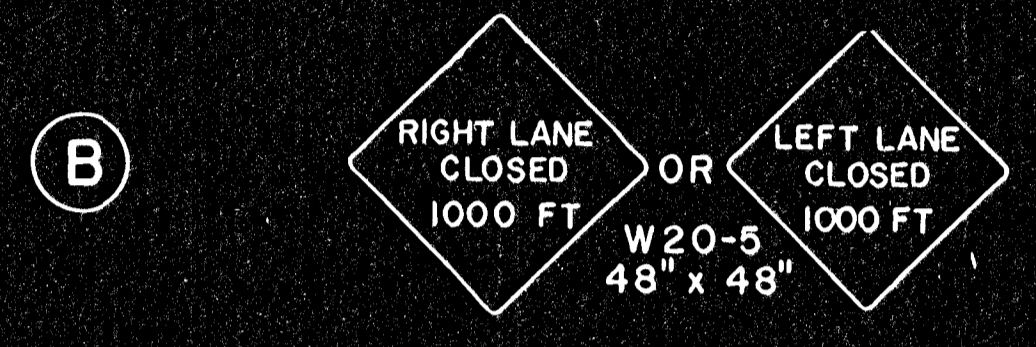
Signs (A), (C), (E) and flagman are required when construction equipment is entering or crossing the roadway.  
 Signs (A) and (E) are required when construction work does not interfere with traffic movement.



**NOTE:**  
 All traffic control devices shall comply to (1) Section 107 of the 1973 Edition of the Standard Specification and to any Supplemental Specification to this section and (2) the Manual on Uniform Traffic Control Devices For Streets and Highways dated November 13, 1970.  
 Lights placed on advance warning signs shall be Type B High Intensity with a 7" minimum diameter lens, regulated to flash 55 to 75 times per minute. The flash duration shall not be less than 8% of time.  
 Install orange reflectORIZED Traffic Cones as shown. They shall be a minimum of 18" in height with a broadened base and may be made of various materials to withstand impact without damage to themselves or to vehicles.  
 Due to existing conditions the ENGINEER may require an increase or decrease in the spacing between cones and/or signs. All dimensions shown are nominal.  
 Temporary traffic control devices when not in use shall be either covered with an opaque weather-proof material or removed from the recovery area as approved by the ENGINEER.  
 The hand signaling device used by flagman shall be a STOP/SLOW sign paddle with a minimum size of 18".  
 All signs and cones shall be securely erected and maintained in good condition at all times. All signs shall be reflectORIZED with reflective sheeting.  
 When no work is in progress, all equipment shall be removed from the recovery area and placed or parked at the extreme limits of the right of way or at sites approved by the ENGINEER.  
 Existing inappropriate pavement markings leaving the roadway in a confusing condition to motorists, which creates the potential for misdirection, shall be removed as soon as practicable. Approved removal procedures include sandblasting using air or water, high pressure water, steam or superheated water, mechanical grinding or solvents and chemicals. Other methods of removal may be used upon approval of the ENGINEER. Due to existing conditions, the Engineer may require the use of a sequential flashing arrow device. When used, it shall be paid for as extra work.



W20-1 shall have a reflectORIZED orange background with the legend and inset border opaque black ink. The legend shall be 7" high series 'C' alphabet. The sign shall be erected approx. 1500 Ft. in advance of the flagman's station or work area. The word AHEAD may be used in lieu of the 1500 Ft. specific distance. A Type B High Intensity Yellow Flashing Warning Light is to be placed on this sign when the G20-1 sign is not used.



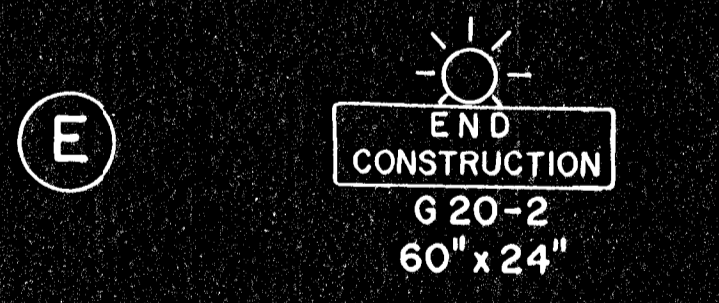
W20-5 shall have a reflectORIZED orange background with the legend and inset border opaque black ink. The legend shall be 6" high series 'C' alphabet. The sign is to be erected approx. 1000 Ft. in advance of the flagman's station. The use of the right or left lane sign shall be determined in the field to satisfy the existing conditions during construction.



W20-7 shall have a reflectORIZED orange background with the legend and inset border opaque black ink. The legend shall be 7" high series 'C' alphabet. When used the sign is to be erected approx. 500 Ft. in advance of the flagman's station.



W20-4 shall have a reflectORIZED orange background with the legend and inset border opaque black ink. The legend shall be 7" high series 'C' alphabet. The sign is to be erected approx. 1000 Ft. in advance of the flagman's station.



G20-2 shall have a reflectORIZED orange background with the legend and inset border opaque black ink. The legend shall be 6" high series 'C' alphabet. The sign is to be erected approx. 500 Ft. beyond the end of construction.



G20-1 shall have a reflectORIZED orange background with the legend and inset border opaque black ink. The legend shall be 6" high series 'C' alphabet. The sign is to be erected approx. 250 Ft. in advance of sign when the construction zone exceeds two (2) miles in length. The \* (mileage) shall be shown to the nearest whole mile.

NO.	DATE	REVISIONS	BY	APP'D.
6	6-21-76	Note - Paint Marking removal	J.H.	AFT
5	6-20-76	Rem. Red Flags	J.H.	AFT
4	9-7-76	G20-1 Sign	JTG	AFT
3	6-20-73	1973 Std. Spec. note	AFT	AFT
2	2/16-73	G20-1 sign, Var. dim., Four Lane Highway	J.H.	AFT
1	3-16-72	Rev. Standard Title	GM	AFT

KANSAS DEPARTMENT OF TRANSPORTATION  
**TRAFFIC CONTROL DEVICES**  
 FOR CONSTRUCTION WORK ADJACENT TO  
 ROADWAY AND MINOR SURFACING WORK  
 TWO AND FOUR LANE HIGHWAY

STD. 7411  
 SHEET NO. 143 OF 143  
 SCALE: \_\_\_\_\_  
 DESIGNED: AFT  
 CHECKED: GM  
 APP'D: *Hunter* 2-10-78  
 QUANTITIES: \_\_\_\_\_  
 TRACED: \_\_\_\_\_  
 DESIGN CK: GM  
 DETAIL CK: AFT  
 QUAN. CK: \_\_\_\_\_  
 TRACE CK: AFT