

Gossin Livingston

Architecture
420 South Emporia
Wichita, KS 67202
Tel: (316) 265-9367
Fax: (316) 265-5646
Email: architecture@gl.com

© 2007 Gossin Livingston Associates, Inc.

The drawing and all information herein is the exclusive property of Gossin Livingston Associates, Inc. and is not to be copied or used in any way without the express written consent of Gossin Livingston Associates, Inc. All drawings, specifications, ideas, designs and arrangements appearing herein constitute the original and unpublished work of:
Gossin Livingston Associates, Inc.



Johnson & Associates, Inc.

100 E. California Ave. - Third Floor

Oklahoma City, OK 73104

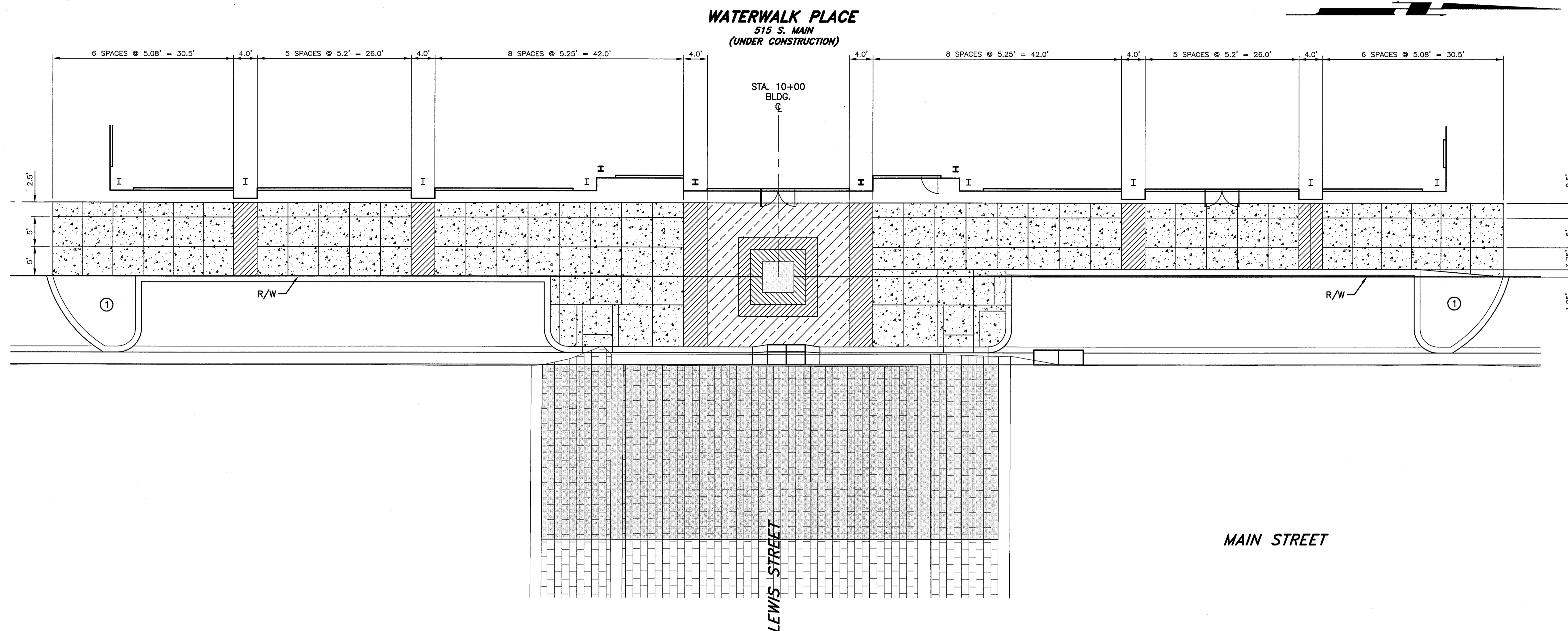
(405) 235-8075 FAX (405) 235-8078

Certificate of Authorization #E-1128 EXP. DATE: 12-31-2008



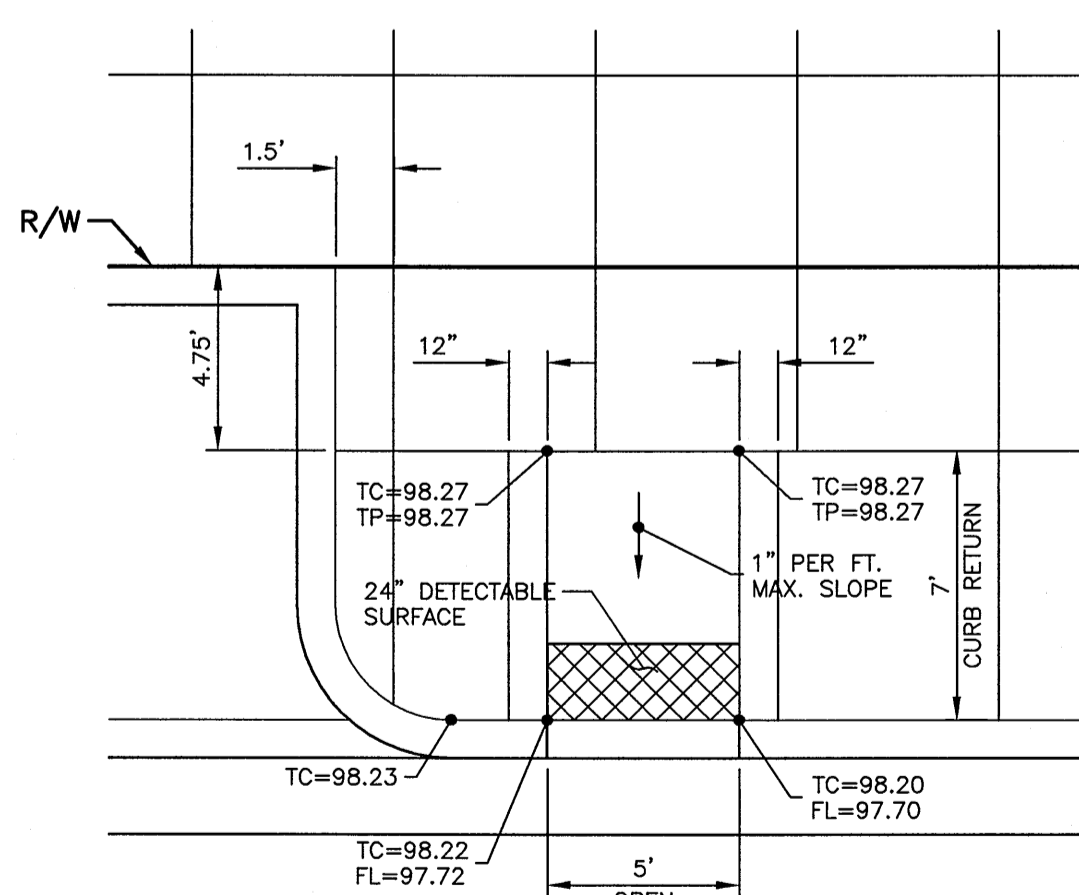
WATERWALK

PUBLIC IMPROVEMENTS PHASE 2 PACKAGE 3



MAIN ENTRANCE PLAN

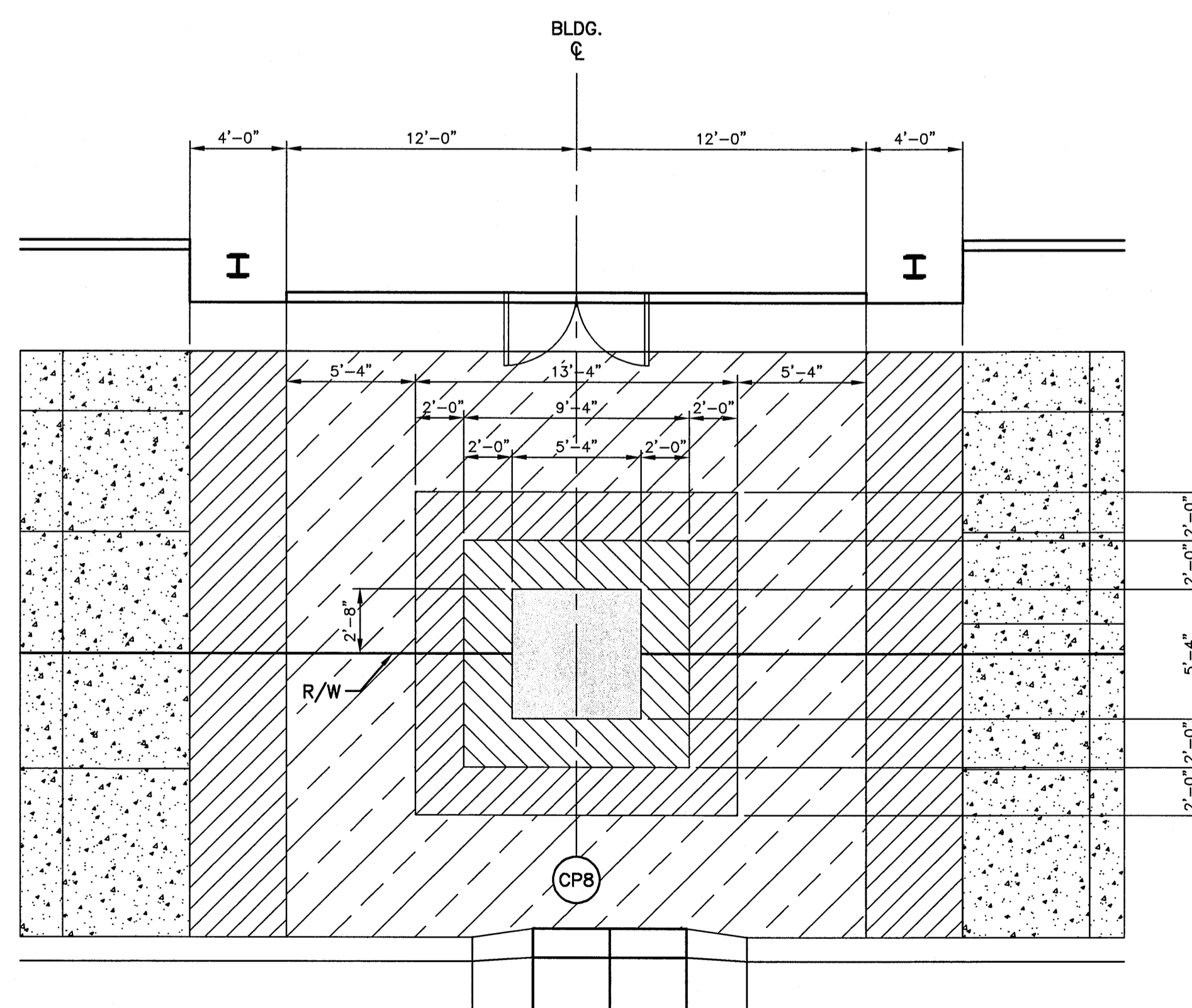
SCALE: 1" = 10'



HANDICAP RAMP DETAIL

STA. 9+69.35, 11.75' RT.

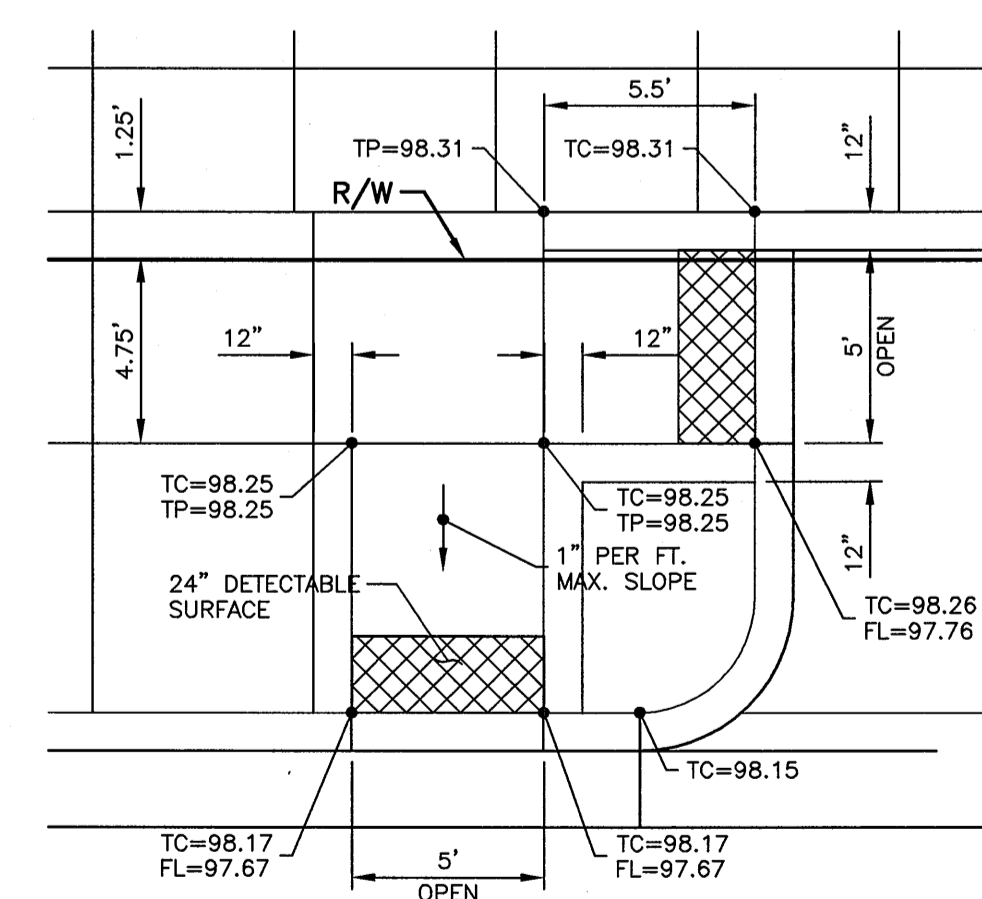
SCALE: 1" = 5'



MAIN ENTRANCE DETAIL

STA. 10+30.50, 11.75' RT.

SCALE: 1" = 5'



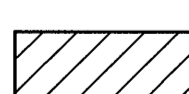
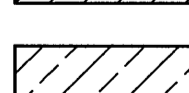
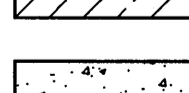


HANDICAP RAMP DETAIL

STA. 10+30.50, 11.75' RT.

SCALE: 1" = 5'

LEGEND

-  2 3/8" x 8" BRICK PAVERS, COLOR #1
-  2 3/8" x 8" BRICK PAVERS, COLOR #2
-  2 3/8" x 8" BRICK PAVERS, COLOR #3
-  2 3/8" x 8" BRICK PAVERS, COLOR #4
-  4" THICK, P.C. CONCRETE SIDEWALK

① OPEN FOR LANDSCAPING

I:\BWS\STD\PAVING\COND-PAV2.dwg 12/13/07 8:48 AM Peter Boveil

Mark	Date	Description
	12/17/07	BID SET
	4/25/07	FIELD CHECK SET

SIDEWALK PLAN WATERWALK PLACE

Job No.	MS1.5
Date	12-17-07
Drawn	B.C.
Checked	P.B.
OF 5	
38 of 44	