

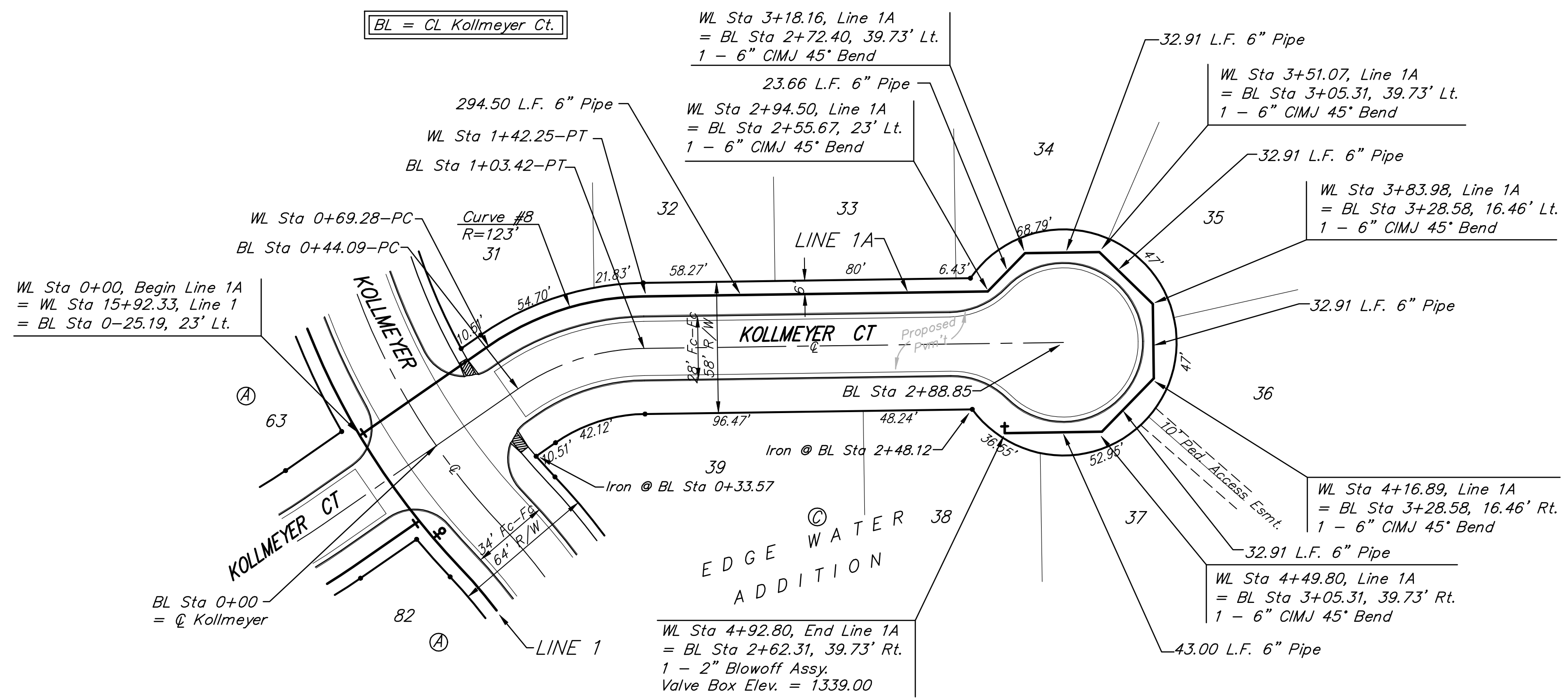
**BENCHMARK:**  
 BM #1: HOOVER AND 45TH ST. NORTH  
 - COW BENCHMARK AT NE CORNER OF  
 INTERSECTION, 10.20' SSE OF PP,  
 58.80' ESE OF PP ON NW CORNER,  
 85.50' NE OF GAS LINE MARKER,  
 59.00' NORTH OF GAS LINE MARKER,  
 28.50' EAST OF CENTERLINE, 14.50'  
 NORTH OF CENTERLINE.  
 ELEV. = 1335.29 (NGVD 29)

BM #2: Small RR spike in 3rd PP west  
 of Hoover St. on the north side of  
 45th St. N.  
 Elev. = 1337.68

BM #3: Small RR spike in 2nd PP east  
 of NW Corner of SEC. 27, TWP. 26-S,  
 R-1-W. (North side of 45th St. N.,  
 west of Hoover St.)  
 Elev. = 1339.57

BM #4: 60d nail in PP at the SE  
 corner of exception on west side of  
 Hoover St., south of 45th St. N.  
 Elev. = 1335.26

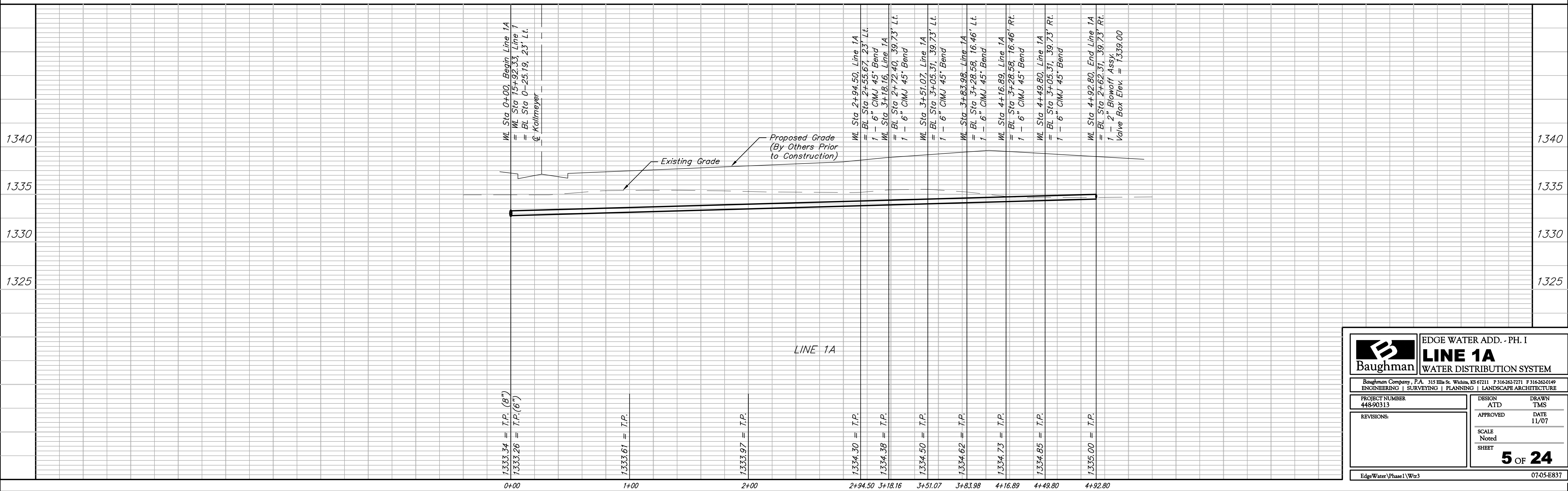
Scale: 1" = 40' Horizontal  
 1" = 5' Vertical  
 • = Iron



For radii under 200',  
 contractor shall use  
 short pipe lengths.

Curve #8  
 Curve Data Based on Waterline  
 Rad. = 123' Delta = 33° 59' 33" Tangent = 37.60'  
 Arc = 72.97' L.C. = 71.91' Def/Ft. = 13.97526 Min.

Station	Arc	CHORD LENGTHS		
		6' Lt.	Defl.	T. Defl.
0+69.28	-	-	0'00"00"	0'00"00"
0+75.00	5.72'	6.00'	1'19"56"	1'19"56"
1+00.00	25.00'	26.18'	5'49"23"	7'09"19"
1+25.00	25.00'	26.18'	5'49"23"	12'58"42"
1+42.25	17.25'	18.08'	4'01"04"	16'59"46"



**Baughman** ENGINEERING | SURVEYING | PLANNING | LANDSCAPE ARCHITECTURE

315 Ellis St. Wichita, KS 67211 P 316-262-7271 F 316-262-0149

**EDGE WATER ADD. - PH. I**  
**LINE 1A**  
**WATER DISTRIBUTION SYSTEM**

PROJECT NUMBER 448-90313	DESIGN ATD	DRAWN TMS
REVISIONS:	APPROVED	DATE 11/07
SCALE Noted		SHEET <b>5 OF 24</b>

EdgeWater\Phase I\Wtr3 07-05-E837