

WL Sta 0+00, Begin Line 3
 = WL Sta 0+00, Line 1
 = WL Sta 0+00, Line 2
 = BL Sta 0-38.00, 26' Lt.

WL Sta 0+90.00, Line 3
 = BL Sta 0+52.00, 26' Lt.
 1 - Fire Hydrant Assy.
 L = 5'
 Bury Line Elev. = 1340.00
 Valve Box Elev. = 1340.10

WL Sta 9+19.59, Line 3
 = WL Sta 0+00, Line 3A
 = BL Sta 8+98.10, 26' Lt.
 1 - 8"x6" Tee
 1 - 6" Anch. Valve Assy. (N)
 (Gate Valve)
 Valve Box Elev. = 1337.00

WL Sta 10+57.00, Line 3-PC
 = BL Sta 10+35.51, 26' Lt.
 1 - 8" Anch. Valve Assy.
 (Special) (Gate Valve)
 Valve Box Elev. = 1337.70

WL Sta 8+62.59, Line 3
 = BL Sta 8+41.10, 26' Lt.
 1 - Fire Hydrant Assy.
 L = 5'
 Bury Line Elev. = 1336.70
 Valve Box Elev. = 1336.80

WL Sta 10+84.00, End Line 3
 = BL Sta 10+65.08, 26' Lt.
 1 - 2" Blowoff Assy.
 Valve Box Elev. = 1337.70

90.00 L.F. 8" Pipe
 BL Sta 0+00
 = @ Cimarron

BENCHMARK:
 BM #1: HOOVER AND 45TH ST. NORTH
 - COW BENCHMARK AT NE CORNER OF
 INTERSECTION, 10.20' SSE OF PP,
 58.80' ESE OF PP ON NW CORNER,
 85.50' NE OF GAS LINE MARKER,
 59.00' NORTH OF GAS LINE MARKER,
 28.50' EAST OF CENTERLINE, 14.50'
 NORTH OF CENTERLINE.
 ELEV. = 1335.29 (NGVD 29)

BM #2: Small RR spike in 3rd PP west
 of Hoover St. on the north side of
 45th St. N.
 Elev. = 1337.68

BM #3: Small RR spike in 2nd PP east
 of NW Corner of SEC. 27, TWP. 26-S,
 R-1-W. (North side of 45th St. N.,
 west of Hoover St.)
 Elev. = 1339.57

BM #4: 60d nail in PP at the SE
 corner of exception on west side of
 Hoover St., south of 45th St. N.
 Elev. = 1335.26

BL = CL Driftwood

WL Sta 7+46.60 to Sta 7+66.60
 Install 20.0 L.F. steel casing
 per City specs.

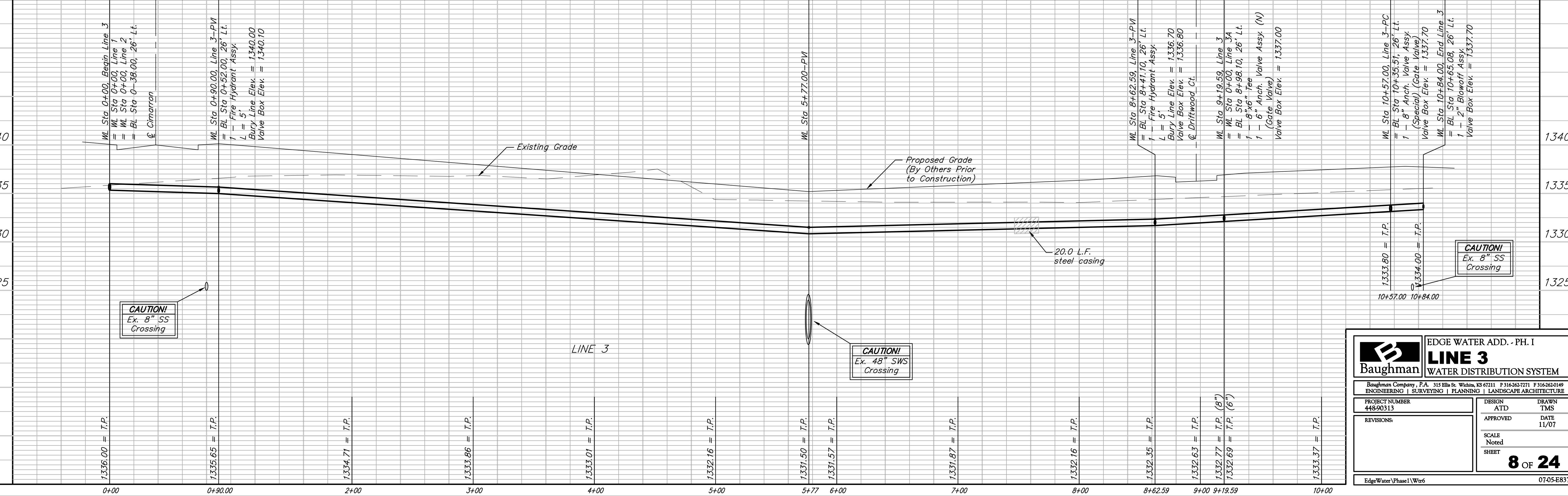
For radii under 200',
 contractor shall use
 short pipe lengths.

Curve #6
 Curve Data Based on Waterline
 Rad. = 174' Delta = 36° 22' 13" Tangent = 57.16'
 Arc = 110.45' L.C. = 108.61' Def/Ft. = 9.87875 Min.

| Station | Arc | CHORD LENGTHS | | |
|---------|--------|---------------|----------|-----------|
| | | 6' Lt. | Defl. | T. Defl. |
| 4+22.69 | - | - | 0'00"00" | 0'00"00" |
| 4+25.00 | 2.31' | 2.23' | 0'22"49" | 0'22"49" |
| 4+50.00 | 25.00' | 24.12' | 4'06"58" | 4'29"47" |
| 4+75.00 | 25.00' | 24.12' | 4'06"58" | 8'36"45" |
| 5+00.00 | 25.00' | 24.12' | 4'06"58" | 12'43"43" |
| 5+25.00 | 25.00' | 24.12' | 4'06"58" | 16'50"42" |
| 5+33.14 | 8.14' | 7.86' | 1'20"25" | 18'11"06" |

Curve #7
 Curve Data Based on Waterline
 Rad. = 274' Delta = 5° 38' 54" Tangent = 13.52'
 Arc = 27' L.C. = 27.00' Def/Ft. = 6.27593 Min.

| Station | Arc | CHORD LENGTHS | | |
|----------|--------|---------------|----------|----------|
| | | 6' Lt. | Defl. | T. Defl. |
| 10+57.00 | - | - | 0'00"00" | 0'00"00" |
| 10+75.00 | 18.00' | 17.61' | 1'52"58" | 1'52"58" |
| 10+84.00 | 9.00' | 8.81' | 0'56"29" | 2'49"27" |



Baughman ENGINEERING | SURVEYING | PLANNING | LANDSCAPE ARCHITECTURE

EDGE WATER ADD. - PH. I
LINE 3
 WATER DISTRIBUTION SYSTEM

PROJECT NUMBER: 448-90313
 DESIGN: ATD
 DRAWN: TMS
 APPROVED: [Signature]
 DATE: 11/07
 SCALE: Noted
 SHEET: 8 OF 24

EdgeWater\Phase I\Wtr6 07-05-E837