

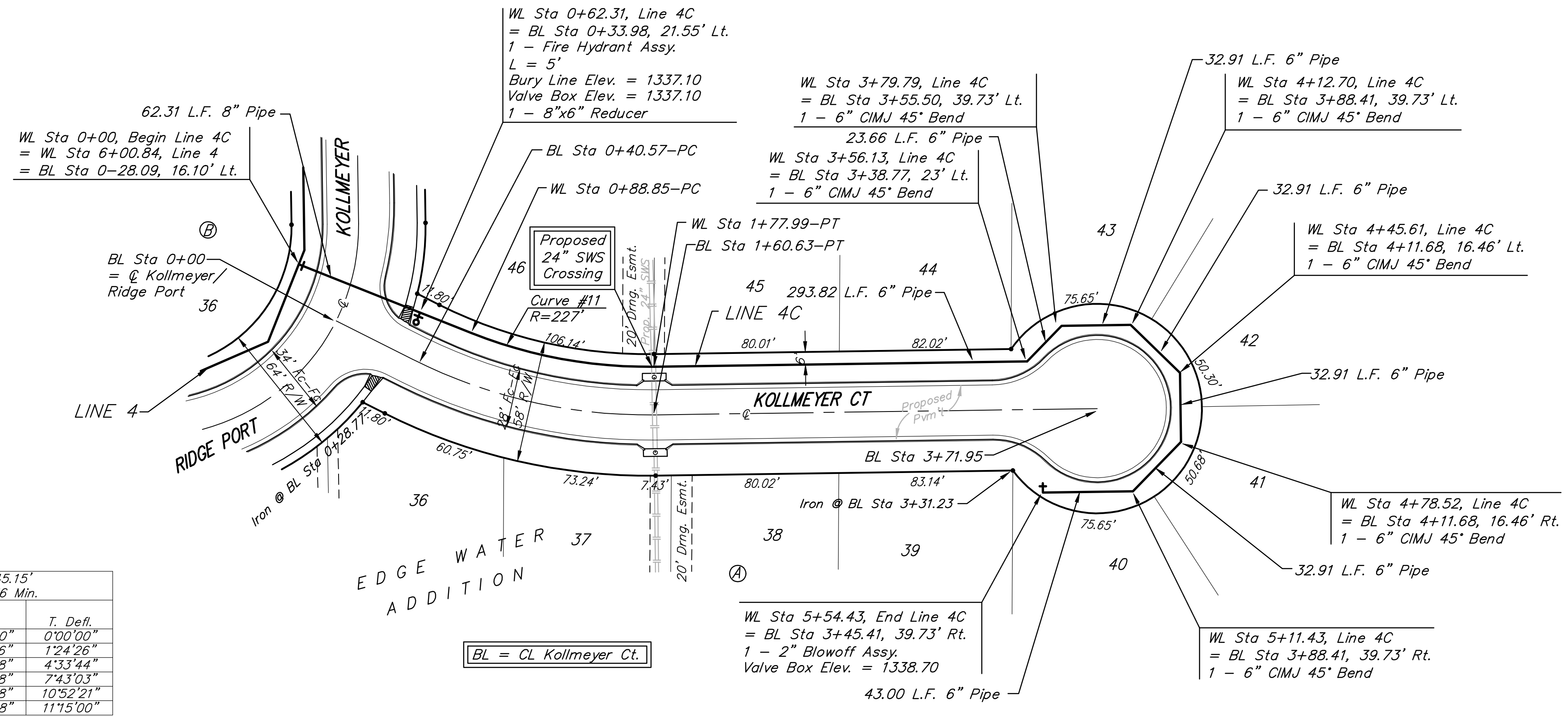
BENCHMARK:
 BM #1: HOOVER AND 45TH ST. NORTH
 - COW BENCHMARK AT NE CORNER OF
 INTERSECTION, 10.20' SSE OF PP,
 58.80' ESE OF PP ON NW CORNER,
 85.50' NE OF GAS LINE MARKER,
 59.00' NORTH OF GAS LINE MARKER,
 28.50' EAST OF CENTERLINE, 14.50'
 NORTH OF CENTERLINE.
 ELEV. = 1335.29 (NGVD 29)

BM #2: Small RR spike in 3rd PP west
 of Hoover St. on the north side of
 45th St. N.
 Elev. = 1337.68

BM #3: Small RR spike in 2nd PP east
 of NW Corner of SEC. 27, TWP. 26-S,
 R-1-W. (North side of 45th St. N.,
 west of Hoover St.)
 Elev. = 1339.57

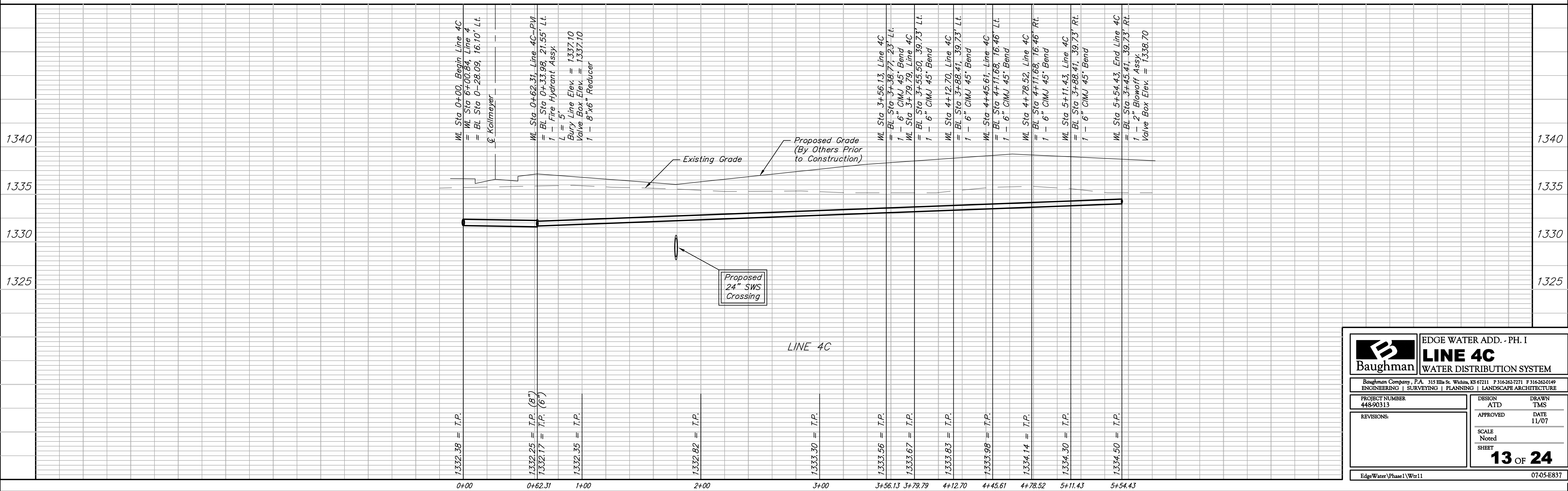
BM #4: 60d nail in PP at the SE
 corner of exception on west side of
 Hoover St., south of 45th St. N.
 Elev. = 1335.26

Scale: 1" = 40' Horizontal
 1" = 5' Vertical
 • = Iron



Curve #11
 Curve Data Based on Waterline
 Rad. = 227' Delta = 22° 30' 00" Tangent = 45.15'
 Arc = 89.14' L.C. = 88.57' Def/Ft. = 7.57236 Min.

Station	Arc	CHORD LENGTHS		Defl.	T. Defl.
		6" Lt.	8" Lt.		
0+88.85	-	-	-	0'00"00"	0'00"00"
1+00.00	11.15'	10.85'	10.85'	1'24"26"	1'24"26"
1+25.00	25.00'	24.33'	24.33'	3'09"18"	4'33"44"
1+50.00	25.00'	24.33'	24.33'	3'09"18"	7'43"03"
1+75.00	25.00'	24.33'	24.33'	3'09"18"	10'52"21"
1+77.99	2.99'	2.91'	2.91'	0'22"38"	11'15"00"



Baughman ENGINEERING | SURVEYING | PLANNING | LANDSCAPE ARCHITECTURE

EDGE WATER ADD. - PH. I
LINE 4C
 WATER DISTRIBUTION SYSTEM

PROJECT NUMBER: 448-90313
 DESIGN: ATD
 DRAWN: TMS
 APPROVED: [Signature]
 DATE: 11/07
 SCALE: Noted
 SHEET: 13 OF 24

EdgeWater\Phase1\Wtr11 07-05-E837