

INDEX OF SHEETS:

1. Cover Sheet
2. Plan
3. Details

GENERAL NOTES:

1. Contractor will be required to provide notice to utility companies a minimum of twenty-four (24) hours prior to any excavation, as follows:

Kansas One-Call (316)687-2470

The Contractor must notify the following in case of an emergency:

Cox Communications (316)262-4270 or (316)263-2061

Westar Energy/  
 Kansas Gas & Electric Company (800)482-4950  
 AT&T 1-555-1212  
 City of Wichita Water Department (316)268-4908  
 City of Wichita Sewer Department (316)268-4071  
 Aquila Natural Gas (316)941-1608 or (800)303-0357

2. Exist. utilities and their locations, as shown on the plans, represent the best information obtainable for design. Location information has been obtained from the various utility companies and is either from company record drawings or company-provided field locations. The Contractor will be required to work around existing utilities which do not conflict with proposed constructions.

3. The Contractor to verify utility locations prior to construction of this project.

4. Utility service and installation shall be coordinated with the respective utility owner. Contacts are:

Kansas Gas Service Jim Coe (316)832-3126  
 Westar Energy Miles Capps (316)261-6251  
 Aquila Networks Calvin Briggs (316)942-8811  
 Wichita Water & Sewer Kerry Gibson (316)268-4555  
 AT&T Jim Toben (316)268-2759  
 Cox Communications Mark Anaya (316)262-4270

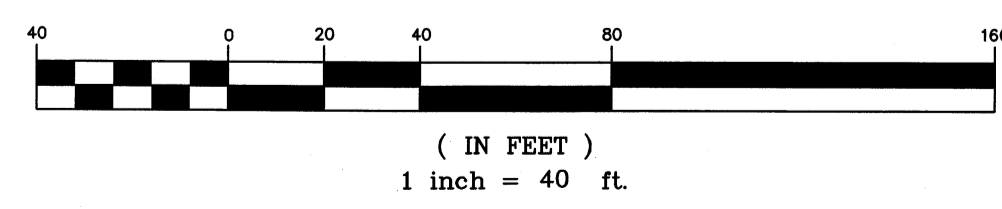
5. All lawn/turf areas disturbed by construction of proposed improvements shall be restored with seeding. All seeding work shall be in accordance with the City of Wichita standard specifications and the City of Wichita administrative regulation No. AR78 which governs cleanup and replacement following construction. All costs for this work shall be subsidiary to the lump sum price bid for "Site Restoration."

6. Traffic affected by the construction of this project shall be handled in accordance with the latest edition of the Manual on Uniform Traffic Control Devices.

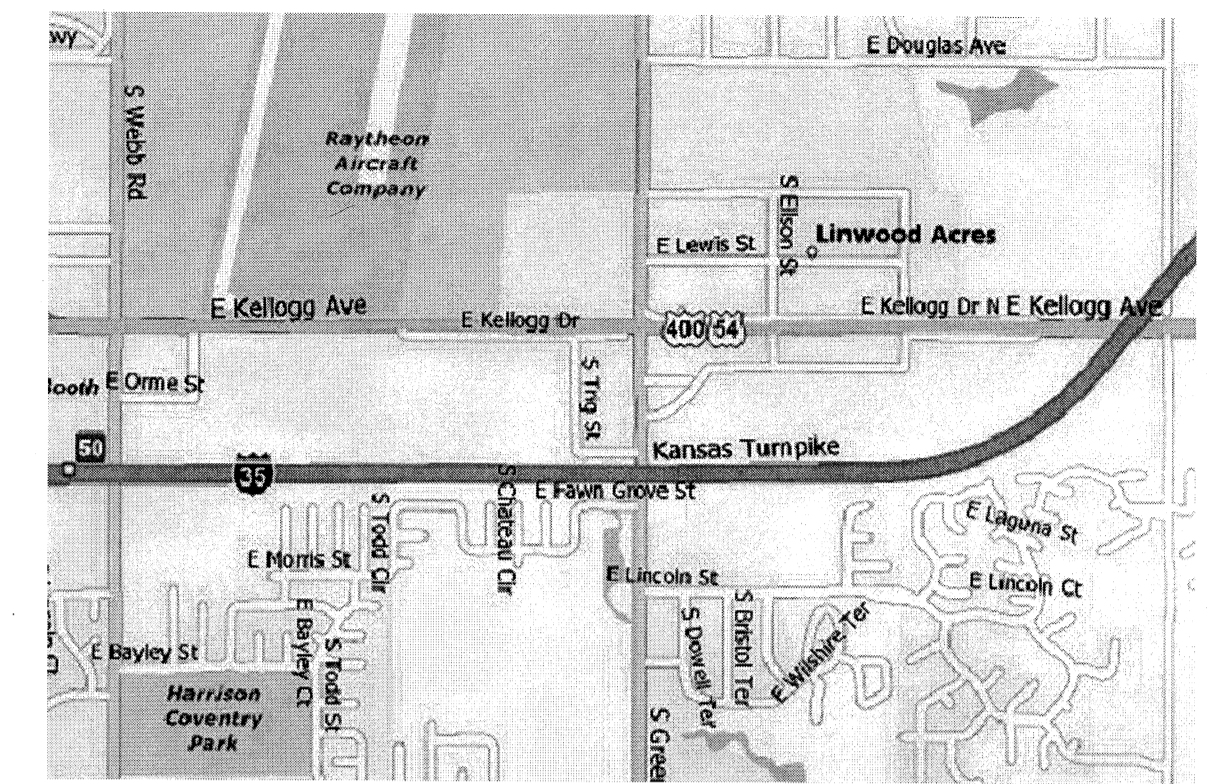
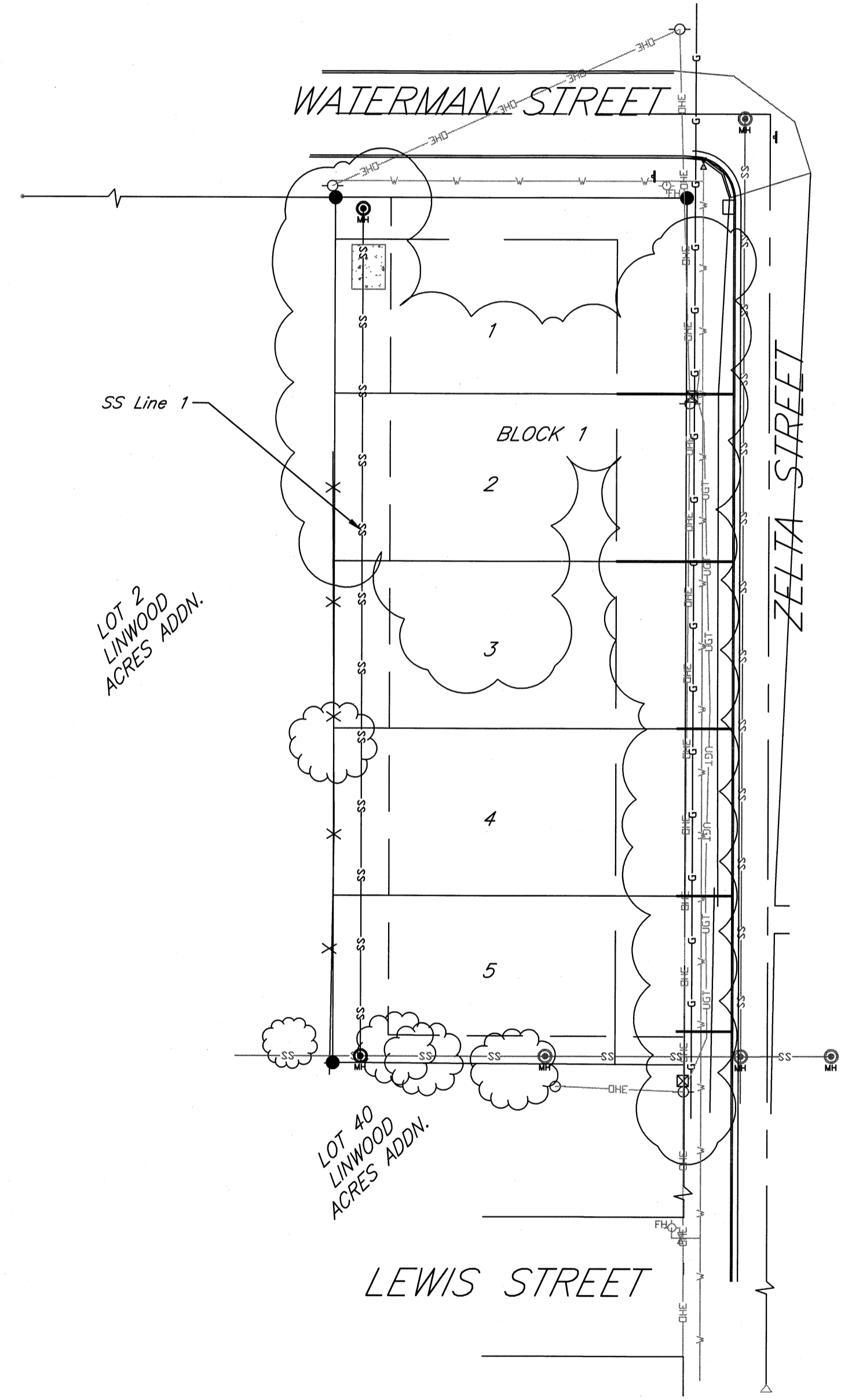
7. It is the contractor's responsibility to visit this site to better understand the extent of site clearing and restoration to be performed. Site Clearing and Restoration shall include all costs for removal of items which a pay item is not provided.

8. The contractor shall be responsible for preserving property irons. The contractor will be required to re-establish any property irons which are damaged or destroyed by the construction operations. Such irons shall be re-established by a licensed land surveyor in accordance with state laws.

9. Properties within the project may have underground irrigation systems (lawn sprinklers) which conflict with the new construction. Contractor shall remove such components as needed during construction of the project. The irrigation system shall be reinstalled in like kind before project completion. Any irrigation system modifications required because of project improvements shall be coordinated with the property owner. Portions of underground irrigation systems not in conflict with construction shall be protected from damage and shall remain in place. All work related to underground irrigation/sprinklers shall be subsidiary to Site Restoration.



# SEWER LINE TO SERVE Linwood Acres 2nd Addition Lots 1-5 1828 PPS (607861) CITY OF WICHITA, KANSAS Jim Armour, P.E., City Engineer



LOCATION MAP

Baseline:  
 20+00 at Intersection of Waterman Street CL and Zelta Street CL, following Zelta Street CL Southward.

Benchmark:  
 COW Bench mark 32' West a 38' North of Centerline of Zelta and Douglas Intersection.

Elev. = 1357.29 MSL

Released 1/14/08  
 JDL 1/14/08



AS BUILTS:  
 CONTRACTOR: Wichita Exc.  
 INSPECTOR: Larry Gann  
 COMPANY: K. E. Miller  
 DATE: 1/10/08

APPROVED AS NOTED

City Engineers Office: VRH 11/29/07

NOTE TO CONTRACTORS

Installation, inspection and testing for this project is to be provided by a Licensed Consulting Engineering Firm under contract with the Owner/Developer. Said inspection to be in accordance with the City of Wichita standard construction engineering practices and certified by a Licensed Professional Engineer. No work shall be performed in dedicated easements or public right-of-way by the Contractor without such inspection nor shall any work be commenced without written authorization by the City Engineer. All Construction and Materials shall comply with the City of Wichita Specifications and Standards (on file and available in the City Engineer's Office).

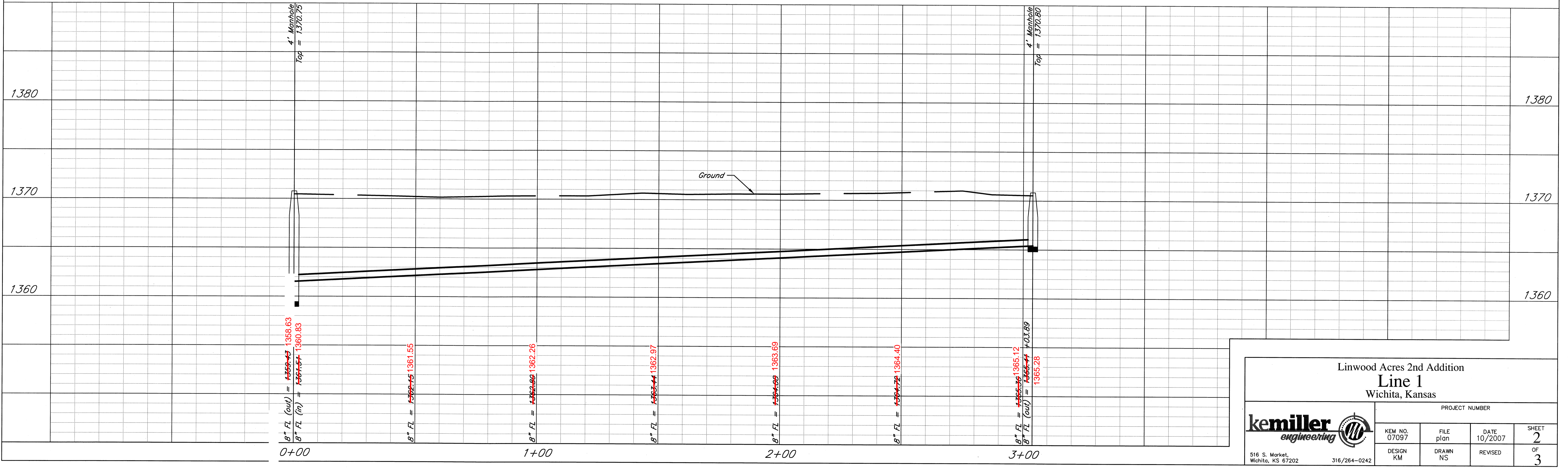
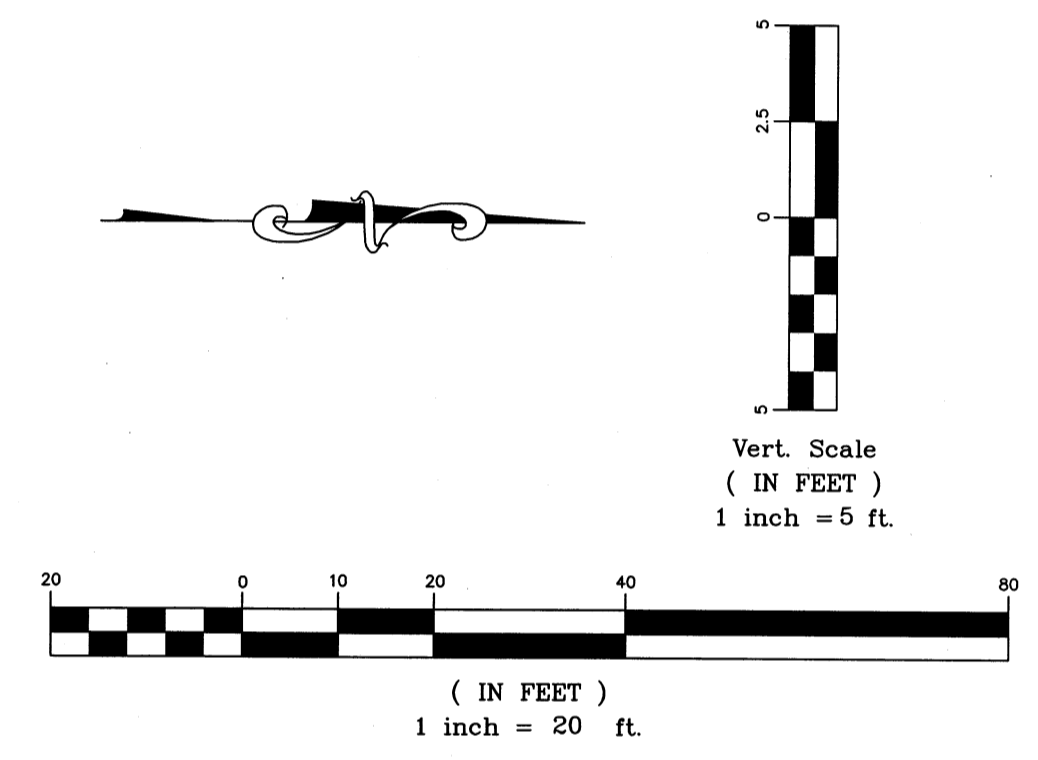
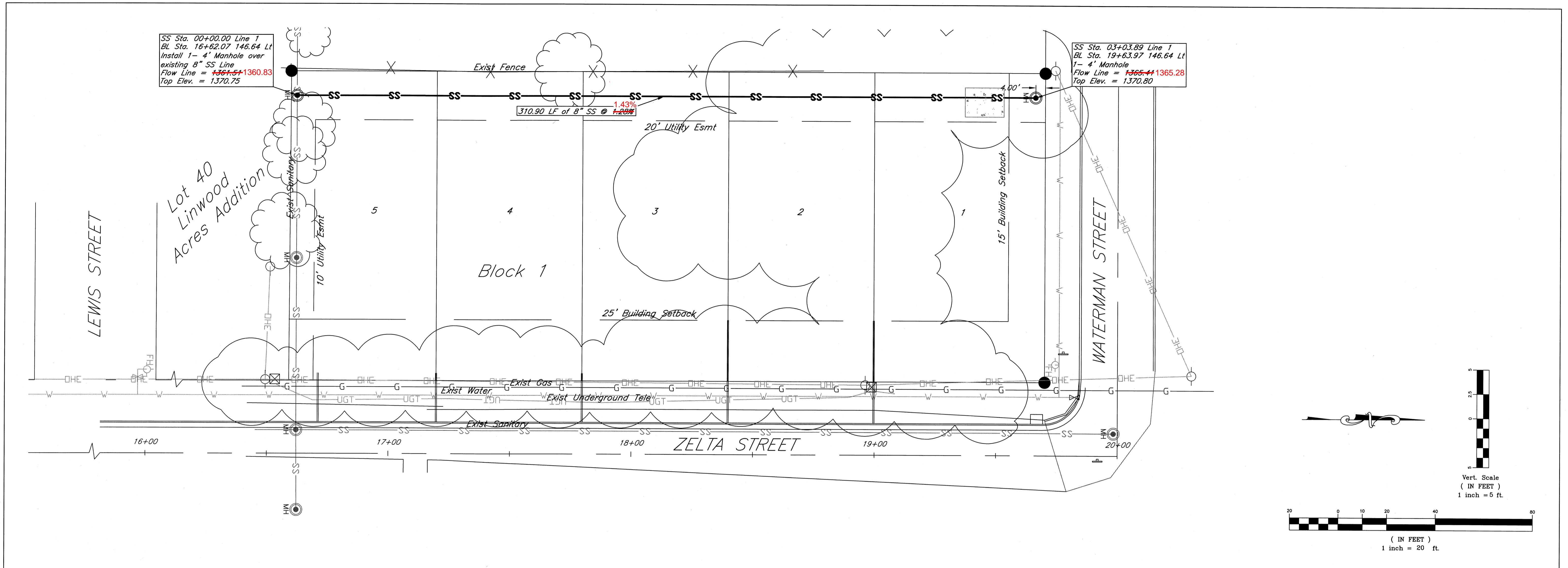
kemiller

engineering

516 S. Market,  
 Wichita, KS 67202

316/264-0242

October 2007



Linwood Acres 2nd Addition  
Line 1  
Wichita, Kansas

**kemiller** engineering

PROJECT NUMBER			
KEM NO. 07097	FILE plan	DATE 10/2007	SHEET 2
DESIGN KM	DRAWN NS	REVISED	OF 3

516 S. Market,  
Wichita, KS 67202

316/284-0242