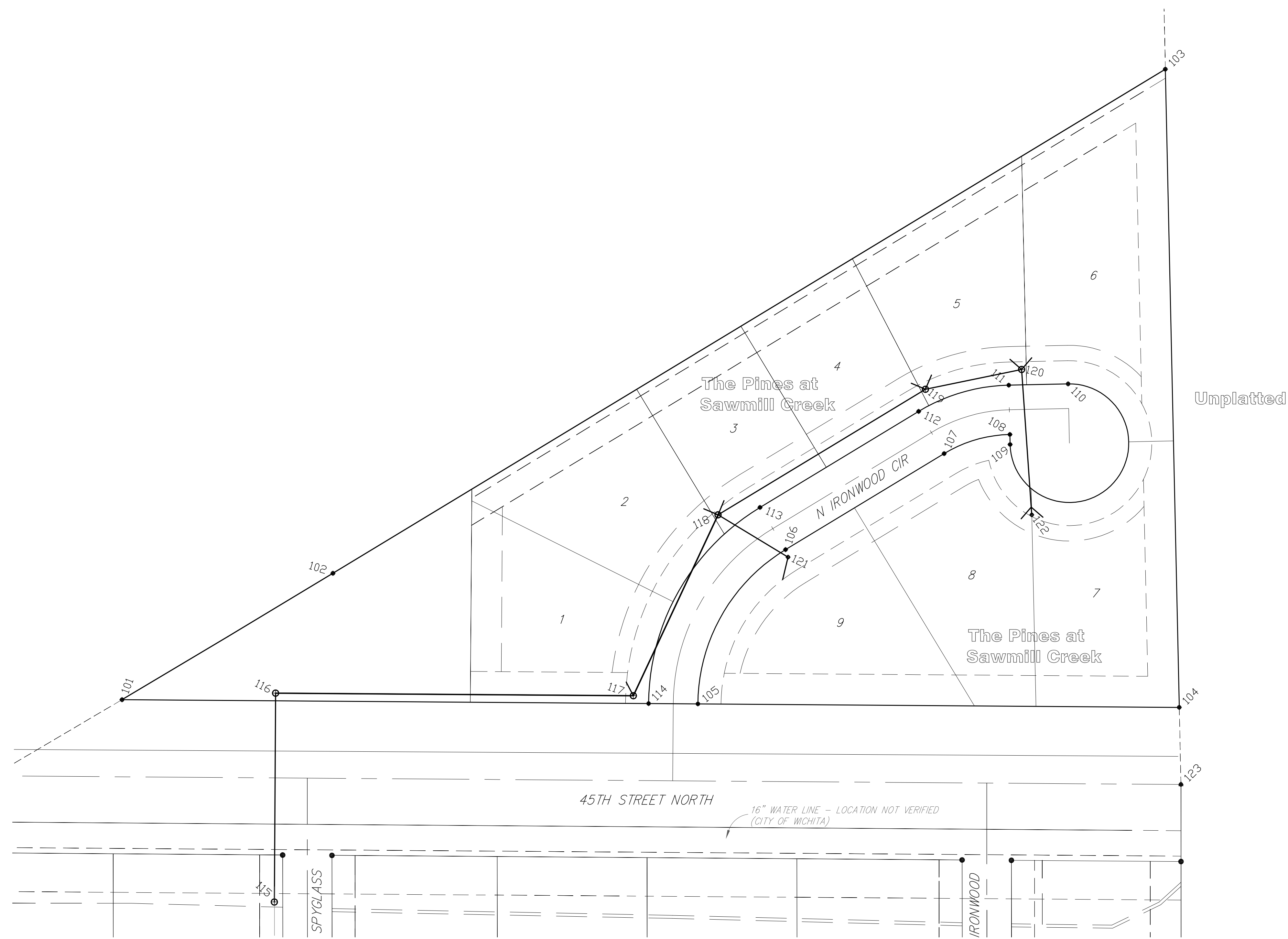
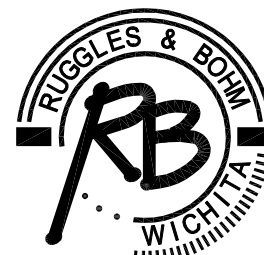


POINT TABLE			
POINT NUMBER	NORTHING	EASTING	DESCRIPTION
101	19183.5759	20888.4909	IRON
102	19265.5960	21025.3376	IRON
103	19592.6479	21565.5760	IRON
104	19178.6012	21574.6074	IRON
105	19180.8662	21262.2224	IRON
106	19280.9542	21319.1097	IRON
107	19343.2617	21422.0318	IRON
108	19355.6722	21464.6940	IRON
109	19349.1738	21464.8357	IRON
110	19388.5042	21502.4870	IRON
111	19387.6646	21463.9962	IRON
112	19370.6362	21405.4597	IRON
113	19308.3288	21302.5376	IRON
114	19181.0982	21230.2233	IRON
115	19052.3334	20987.3549	10+00 MH 1-1
116	19187.8534	20988.1603	11+35.52 MH 1-2
117	19186.1700	21220.3379	13+67.70 MH 1-3
118	19303.5314	21275.3035	14+97.30 MH 1-4
119	19385.0048	21409.8848	16+54.62 MH 1-5
120	19397.8483	21472.3078	17+18.35 MH 1-6
121	19276.0794	21320.7231	10+53.07 CO 1A
122	19303.5423	21478.8992	10+94.54 CO 1B
123	19128.5920	21575.6982	QUARTER SECTION



SCALE: 1" = 40'

THE PINES AT SAWMILL CREEK Key Map WICHITA, KANSAS			
	Ruggles & Bohm, P.A. Engineering, Surveying, Land Planning		DESIGN KWL DRAWN MLP REVIEW UTILITY
	924 North Main Wichita, Kansas 67203 www.rbkansas.com		(316) 264-8008 (316) 264-4621 fax E-mail: info@rbkansas.com
DRAWING FILE SS [KEY MAP]	PROJECT NUMBER 46B-84456	DATE Dec. 13, 2007	RB JOB 3134E SHEET 3 OF 13