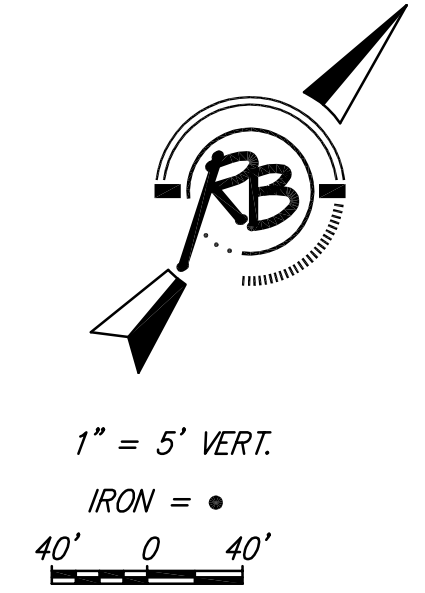
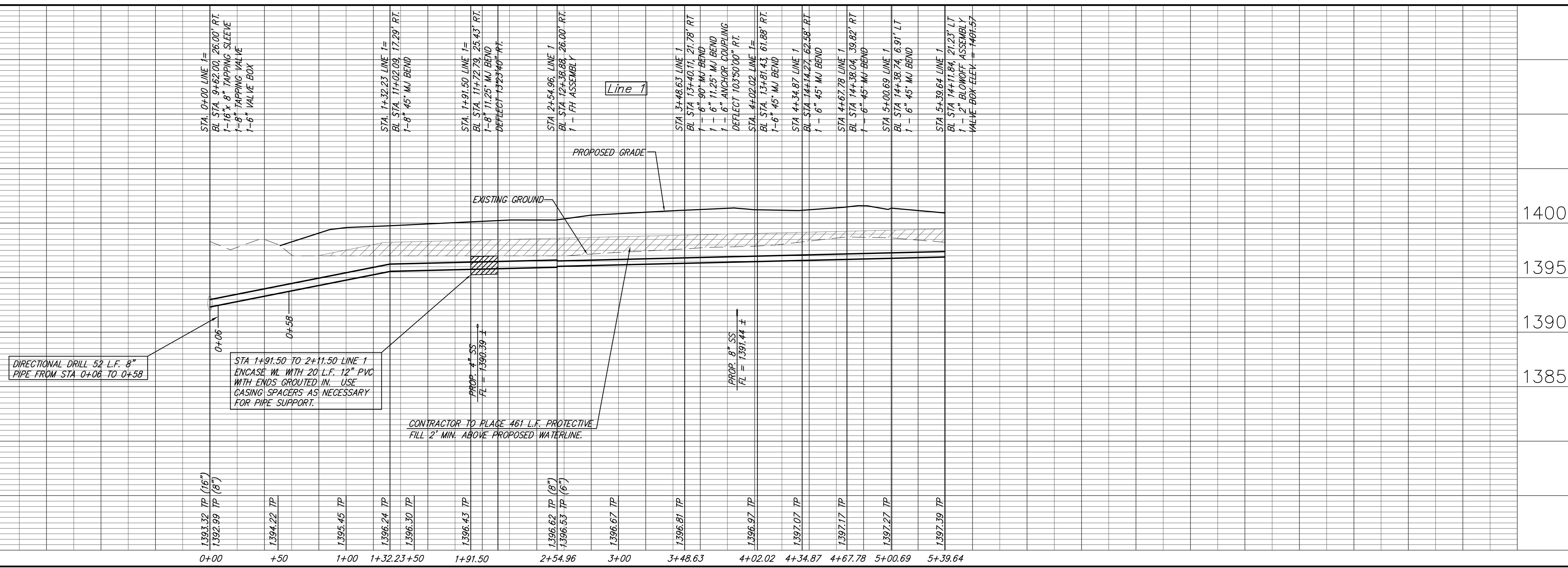


STA. 0+00 LINE 1 =
 BL STA. 9+62.00, 26.00' RT.
 *1-16" x 8" TAPPING SLEEVE
 *1-8" TAPPING VALVE
 *1-6" VALVE BOX
 *FURNISHED AND INSTALLED BY DEPT.
 OF WATER & SEWER
 VALVE BOX ELEV. = 1398.49
 CONTRACTOR TO VERIFY DEPTH &
 LOCATION OF EX. 16" WL.

TRIM AND REMOVE TREES ONLY AS
 NECESSARY TO CONSTRUCT WATERLINE.
 SUBSIDIARY TO BID ITEM FOR "SITE
 CLEARING AND RESTORATION".



Ruggles & Dohm, P.A.
 Engineering, Surveying, Land Planning
 600 Main St., Suite 1000
 Wichita, Kansas 67202
 www.rugglesanddohm.com
 E-mail: rd@ruggles.com



PROJECT NUMBER 448-90347	DESIGN AWL	DRAWN KWL	REVIEWED KWL
DRAWING FILE Water [LINE 1].	UTILITY	DATE Dec. 18, 2007	REVIEW
The Pines at Sawmill Creek Water Distribution System WICHITA KANSAS			
RB JOB 3134F	SHEET 3		11