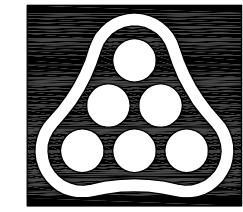
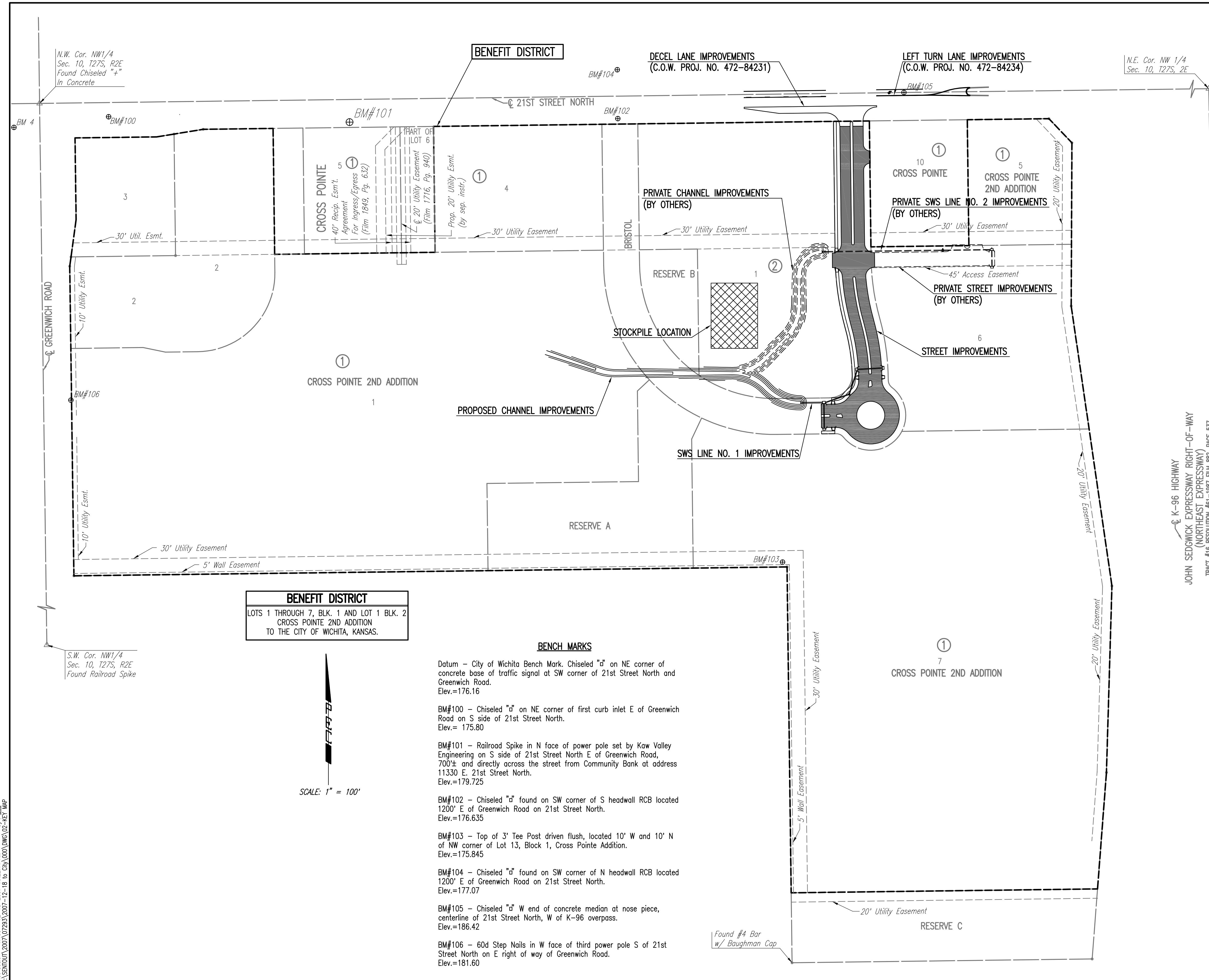


**GENERAL NOTES**

- UNDERGROUND UTILITY SERVICE LINES AND OVERHEAD UTILITY POLE LINES ARE TO BE ADJUSTED AS NECESSARY BY OTHERS PRIOR TO CONSTRUCTION UNLESS THE PLANS SPECIFICALLY CALL FOR THEIR ADJUSTMENT BY THE CONTRACTOR. EXISTING UTILITIES AND THEIR LOCATION, AS SHOWN ON THE PLANS, REPRESENT THE BEST INFORMATION OBTAINABLE FOR DESIGN. LOCATION INFORMATION HAS BEEN OBTAINED FROM THE VARIOUS UTILITY COMPANIES AND IS EITHER FROM COMPANY RECORD DRAWINGS OR COMPANY PROVIDED FIELD LOCATIONS. THE CONTRACTOR WILL BE REQUIRED TO WORK AROUND EXISTING UTILITIES WITHIN THE RIGHT-OF-WAY WHICH DO NOT CONFLICT WITH PROPOSED CONSTRUCTION.
- TREES AND SHRUBS IN PUBLIC RIGHT-OF-WAY WHICH ARE IN DIRECT CONFLICT WITH PROPOSED NEW CONSTRUCTION SHALL BE REMOVED BY THE CONTRACTOR WITH THE ENGINEER'S APPROVAL. TREES AND SHRUBS WHICH ARE NOT IN DIRECT CONFLICT WITH PROPOSED NEW CONSTRUCTION SHALL BE SAVED AND PROTECTED FROM DAMAGE.
- RUBBLE FROM THE REMOVAL OF MISCELLANEOUS STRUCTURES SHALL BE DISPOSED OF ON SITES TO BE PROVIDED BY THE CONTRACTOR AND APPROVED AS NOTED BELOW.  
  
ALL DISPOSAL SITES MUST BE APPROVED BY THE KANSAS DEPARTMENT OF HEALTH AND ENVIRONMENT. MATERIAL EITHER STOCKPILED OR DISPOSED OF IN A FLOOD PLAIN WOULD REQUIRE A KANSAS STATE BOARD OF AGRICULTURE PERMIT. ANY MATERIAL DUMPED IN WATERS OF THE UNITED STATES OR WETLANDS IS SUBJECT TO U.S. CORPS OF ENGINEERS PERMITTING REGULATIONS. ANY MATERIAL BURIED OR STOCKPILED BEYOND APPROVED CONSTRUCTION LIMITS WOULD REQUIRE ADDITIONAL ARCHEOLOGICAL INVESTIGATIONS UNLESS BURIED IN A PREVIOUSLY APPROVED BORROW LOCATION.
- CONTRACTOR SHALL SATISFY HIMSELF OF SURFACE AND SUBSURFACE CONDITIONS PRIOR TO BIDDING.
- TEMPORARY SURFACING MATERIAL (ROCK, ASPHALT, ETC.) MAY HAVE BEEN PLACED WITHIN STREET RIGHTS-OF-WAY FOR HAUL ROADS AND TEMPORARY ACCESS. CONTRACTOR SHALL FIELD VERIFY EXISTING CONDITIONS TO DETERMINE EXTENT, IF ANY, OF SUCH SURFACING. CONTRACTOR SHALL REMOVE SAID TEMPORARY SURFACING IN THE SAME MANNER AS NOTED ABOVE FOR RUBBLE. THIS REMOVAL SHALL BE SUBSIDIARY TO "EXCAVATION".
- CONTRACTOR SHALL PROVIDE A MINIMUM SEVENTY-TWO (72) HOUR ADVANCE NOTICE (EXCLUDING WEEKENDS AND HOLIDAYS) PRIOR TO BEGINNING ANY EXCAVATION, TO KANSAS ONE-CALL SYSTEM, A UTILITY LOCATION SERVICE, AT (316) 687-2470 TO REQUEST THE FOLLOWING UTILITY COMPANIES TO LOCATE ALL EXISTING LINES WITHIN THE PROJECT AREA: KANSAS GAS SERVICE, WESTAR ENERGY, AT&T, COX COMMUNICATIONS, CITY OF WICHITA SEWER MAINTENANCE AND CITY OF WICHITA WATER DEPARTMENT.
- THE CONTRACTOR SHALL BE RESPONSIBLE FOR PRESERVING PROPERTY IRONS. THE CONTRACTOR WILL BE REQUIRED TO RE-ESTABLISH ANY PROPERTY IRONS WHICH ARE DAMAGED OR DESTROYED BY HIS CONSTRUCTION OPERATIONS. SUCH IRONS SHALL BE RE-ESTABLISHED BY A LICENSED LAND SURVEYOR IN ACCORDANCE WITH STATE LAWS.
- THE WATER DEPARTMENT SHALL FIELD LOCATE WATER VALVES ONE TIME DURING CONSTRUCTION TO PRESERVE SUCH FIELD LOCATIONS DURING THE CONSTRUCTION PROCESS. WATER VALVES, WATER VALVE BOXES OR FIRE HYDRANTS DAMAGED DURING CONSTRUCTION SHALL BE REPAIRED BY THE CONTRACTOR AT HIS OWN EXPENSE.
- THE CONTRACTOR SHALL ADJUST WATER VALVE BOXES AS DIRECTED BY THE ENGINEER. THIS WORK TO BE SUBSIDIARY TO OTHER BID ITEMS.
- EROSION CONTROL (BMP'S)  
THE CONTRACTOR SHALL INSTALL AND/OR MAINTAIN EROSION CONTROL METHODS AS SPECIFIED ON THE EROSION CONTROL PLAN CONTAINED HEREIN. THE FOLLOWING QUANTITIES ARE ESTIMATED, AND SHOULD BE CONSIDERED THE MINIMUM EFFORT REQUIRED. INSTALLATION OF THESE BMP'S DOES NOT RELIEVE THE CONTRACTOR OF THE RESPONSIBILITY OF ABATING SOIL EROSION.  
  
CURB INLET PROTECTION            6 EACH  
CONSTRUCTION ENTRANCE        2 EACH  
BACK OF CURB PROTECTION      1,380 L.F.  
DITCH CHECK PROTECTION        73 L.F.
- THE CONTRACTOR SHALL APPLY TEMPORARY SEED AND MULCH TO ALL UNPAVED AREAS DISTURBED BY HIS CONSTRUCTION OPERATIONS WITHIN 14 DAYS AFTER SUCH OPERATIONS CEASE IN ACCORDANCE WITH THE STANDARD SPECIFICATIONS. SEED SHALL BE ANNUAL RYE APPLIED AT THE RATE OF 4 LBS. PER 1,000 SQUARE FEET. MULCH SHALL BE PRAIRIE HAY APPLIED AT THE RATE OF 15 BALES PER ACRE. THIS WORK SHALL BE PAID FOR AT THE CONTRACT LUMP SUM PRICE BID FOR "TEMPORARY PROJECT SEEDING".
- IN THE PROPER SEASON, CONTRACTOR SHALL APPLY PERMANENT SEED, FERTILIZER, AND MULCH TO ALL UNPAVED AREAS DISTURBED BY CONSTRUCTION WITHIN ROAD RIGHT-OF-WAY. SEED SHALL BE A PREMIUM TURF TYPE FESCUE BLEND WELL SUITED TO SOUTH CENTRAL KANSAS AND APPLIED AT A RATE OF 8 LBS. PER 1000 SQ. FT. FERTILIZER SHALL BE 12-24-12 APPLIED AT A RATE OF 350 LBS. PER ACRE. THIS WORK SHALL BE PAID FOR AT THE CONTRACT LUMP SUM PRICE BID FOR "PERMANENT PROJECT SEEDING".
- CONTRACTOR SHALL PROVIDE, INSTALL AND MAINTAIN CONSTRUCTION TRAFFIC CONTROL IN ACCORDANCE WITH THE STANDARD SPECIFICATIONS AND THE MUTCD. ALL DEVICES SHALL BE REFLECTORIZED. ALL COSTS FOR CONSTRUCTION TRAFFIC CONTROL SHALL BE SUBSIDIARY TO OTHER BID ITEMS.
- WATER FOR EARTHWORK SHALL BE CONSIDERED SUBSIDIARY TO "UNCLASSIFIED EXCAVATION"
- PRIOR TO CONSTRUCTION, THE CONTRACTOR SHALL BE RE-ESTABLISHED CONTROL POINTS AND BENCH MARKS AND VERIFY THEIR ACCURACY.



| No.   | Revision | By      | Date          |
|---|----------|---------|---------------|
| CROSS POINTE 2ND ADDITION-PHASE 1<br>PAVING AND INCIDENTAL DRAINAGE IMPROVEMENTS<br><b>KEY MAP AND GENERAL NOTES</b><br>JAMES L. ARMOUR, P.E. - CITY ENGINEER<br>CITY OF WICHITA PROJECT NO. 472-84640<br><b>Professional Engineering Consultants, P.A.</b><br>303 S. TOPEKA • WICHITA, KANSAS 67202<br>316-262-2691 • FAX 316-262-3003 |          |         |               |
| Designed by   | BDB, BMM | Job No. | 35-07293-000  |
| Drawn by  | BJS, TAT | Date    | October 2007  |
|   |          |         | Sheet 2 of 29 |



**BENEFIT DISTRICT**  
 LOTS 1 THROUGH 7, BLK. 1 AND LOT 1 BLK. 2  
 CROSS POINTE 2ND ADDITION  
 TO THE CITY OF WICHITA, KANSAS.

**BENCH MARKS**

- Datum - City of Wichita Bench Mark. Chiseled "d" on NE corner of concrete base of traffic signal at SW corner of 21st Street North and Greenwich Road.  
 Elev.=176.16
- BM#100 - Chiseled "d" on NE corner of first curb inlet E of Greenwich Road on S side of 21st Street North.  
 Elev.= 175.80
- BM#101 - Railroad Spike in N face of power pole set by Kaw Valley Engineering on S side of 21st Street North E of Greenwich Road, 700± and directly across the street from Community Bank at address 11330 E. 21st Street North.  
 Elev.=179.725
- BM#102 - Chiseled "d" found on SW corner of S headwall RCB located 1200' E of Greenwich Road on 21st Street North.  
 Elev.=176.635
- BM#103 - Top of 3' Tee Post driven flush, located 10' W and 10' N of NW corner of Lot 13, Block 1, Cross Pointe Addition.  
 Elev.=175.845
- BM#104 - Chiseled "d" found on SW corner of N headwall RCB located 1200' E of Greenwich Road on 21st Street North.  
 Elev.=177.07
- BM#105 - Chiseled "d" W end of concrete median at nose piece, centerline of 21st Street North, W of K-96 overpass.  
 Elev.=186.42
- BM#106 - 60d Step Nails in W face of third power pole S of 21st Street North on E right of way of Greenwich Road.  
 Elev.=181.60

SCALE: 1" = 100'



S.W. Cor. NW1/4  
 Sec. 10, T27S, R2E  
 Found Railroad Spike

N.W. Cor. NW1/4  
 Sec. 10, T27S, R2E  
 Found Chiseled "d"  
 In Concrete

N.E. Cor. NW 1/4  
 Sec. 10, T27S, 2E

Served 12-18-2007 9:05:44 AM by BJS  
 Plot Scale 1:100 12-18-2007 10:22:44 AM  
 J:\SENTOUT\2007\07293\2007-12-18 to CITY\DWG\02-KEY MAP