

CROSS POINTE 2ND ADDITION

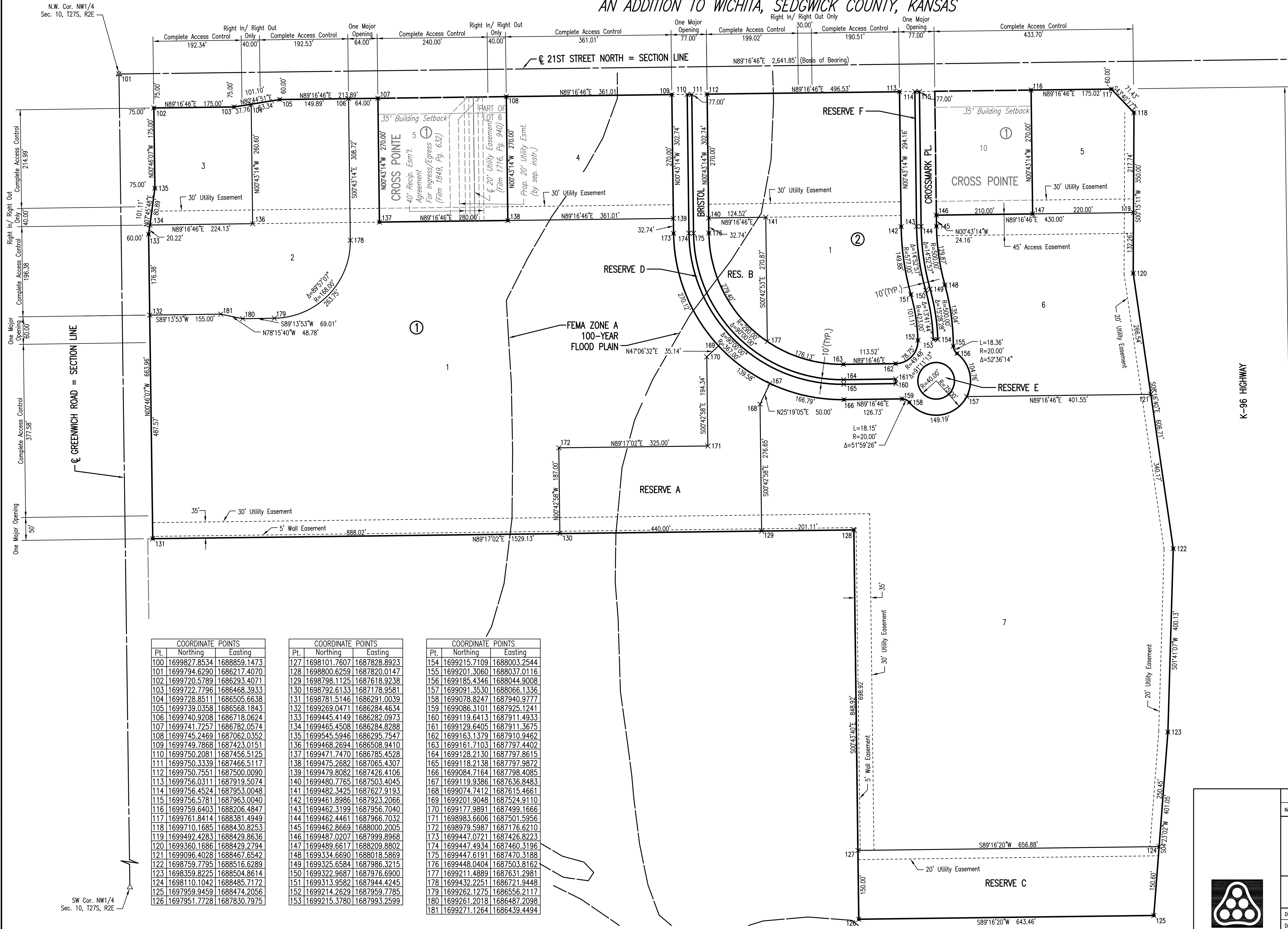
AN ADDITION TO WICHITA, SEDGWICK COUNTY, KANSAS



SCALE: 1" = 100'

- = 1/2" REBAR W/PEC CAP UNLESS OTHERWISE NOTED
- △ = SECTION CORNER

TOPOGRAPHY BY PHOTOGRAMMETRIC METHODS FROM AERIAL PHOTOGRAPHS
TAKEN ON APR 9, 2003.
BENCHMARK #4: CHISELED SQUARE ON CONCRETE BASE TRAFFIC SIGNAL
POLE AT S.W. CORNER 21ST AND GREENWICH.
ELEV. = 176.16 C.O.W. DATUM

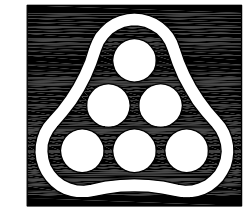


COORDINATE POINTS		
Pt.	Northing	Easting
100	1699827.8534	1688859.1473
101	1699794.6290	1686217.4070
102	1699720.5789	1686293.4071
103	1699722.7796	1686468.3933
104	1699728.8511	1686505.6638
105	1699739.0358	1686568.1843
106	1699740.9208	1686718.0624
107	1699741.7257	1686782.0574
108	1699745.2469	1687062.0352
109	1699749.7868	1687423.0151
110	1699750.2081	1687456.5125
111	1699750.3339	1687466.5117
112	1699750.7551	1687500.0090
113	1699756.0311	1687919.5074
114	1699756.4524	1687953.0048
115	1699756.5781	1687963.0040
116	1699759.6403	1688206.4847
117	1699761.8414	1688381.4949
118	1699770.1685	1688430.8253
119	1699492.4283	1688429.8636
120	1699360.1686	1688429.2794
121	1699096.4028	1688467.6542
122	1698759.7795	1688516.6289
123	1698359.8225	1688504.8614
124	1698110.1042	1688485.7172
125	1697959.9459	1688474.2056
126	1697951.7728	1687830.7975

COORDINATE POINTS		
Pt.	Northing	Easting
127	1698101.7607	1687828.8923
128	1698800.6259	1687820.0147
129	1698798.1125	1687618.9238
130	1698792.6133	1687178.9581
131	1698781.5146	1686291.0039
132	1699269.0471	1686284.4634
133	1699445.4149	1686282.0973
134	1699465.4508	1686284.8288
135	1699545.5946	1686295.7547
136	1699468.2694	1686508.9410
137	1699471.7470	1686785.4528
138	1699475.2682	1687065.4307
139	1699479.8082	1687426.4106
140	1699480.7765	1687503.4045
141	1699482.3425	1687627.9193
142	1699461.8986	1687923.2066
143	1699462.3199	1687956.7040
144	1699462.4461	1687966.7032
145	1699462.8669	1688000.2005
146	1699487.0207	1687999.8968
147	1699489.6617	1688209.8802
148	1699334.6690	1688018.5869
149	1699325.6584	1687986.3215
150	1699322.9687	1687976.6900
151	1699313.9582	1687944.4245
152	1699214.2629	1687959.7785
153	1699215.3780	1687993.2599

COORDINATE POINTS		
Pt.	Northing	Easting
154	1699215.7109	1688003.2544
155	1699201.3060	1688037.0116
156	1699185.4346	1688044.9008
157	1699091.3530	1688066.1336
158	1699078.8247	1687940.9777
159	1699086.3101	1687925.1241
160	1699119.6413	1687911.4933
161	1699129.6405	1687911.3675
162	1699163.1379	1687910.9462
163	1699161.7103	1687797.4402
164	1699128.2130	1687797.8615
165	1699118.2138	1687797.9872
166	1699084.7164	1687798.4085
167	1699119.9386	1687636.8483
168	1699074.7412	1687615.4661
169	1699201.9048	1687524.9110
170	1699177.9891	1687499.1666
171	1698983.6606	1687501.5956
172	1698979.5987	1687176.6210
173	1699447.0721	1687426.8223
174	1699447.4934	1687460.3196
175	1699447.6191	1687470.3188
176	1699448.0404	1687503.8162
177	1699211.4889	1687631.2981
178	1699432.2251	1686721.9448
179	1699262.1275	1686556.2117
180	1699261.2018	1686487.2098
181	1699271.1264	1686439.4494

No.	Revision	By	Date
CROSS POINTE 2ND ADDITION-PHASE 1 PAVING AND INCIDENTAL DRAINAGE IMPROVEMENTS			
PLAT			
JAMES L. ARMOUR, P.E. - CITY ENGINEER CITY OF WICHITA PROJECT NO. 472-84640			
Professional Engineering Consultants, P.A. 303 S. TOPKA • WICHITA, KANSAS 67202 316-262-2691 • FAX 316-262-3003			
Designed by	BDB, BMM	Job No.	35-07293-000
Drawn by	BJS, TAT	Date	October 2007
			Sheet 3 of 29



Scaled 12-12-2007 9:05:24 AM by BJS
 Plot Scale 1:100 12-18-2007 10:24:00 AM
 J:\SENTOUT\2007\07293\2007-12-18 to CITY\DWG\03-FINAL.PLT

N.W. Cor. NW1/4
Sec. 10, T27S, R2E

SW Cor. NW1/4
Sec. 10, T27S, R2E