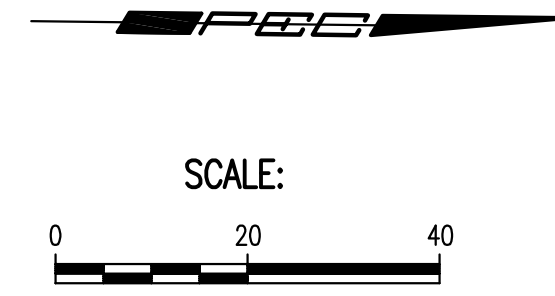
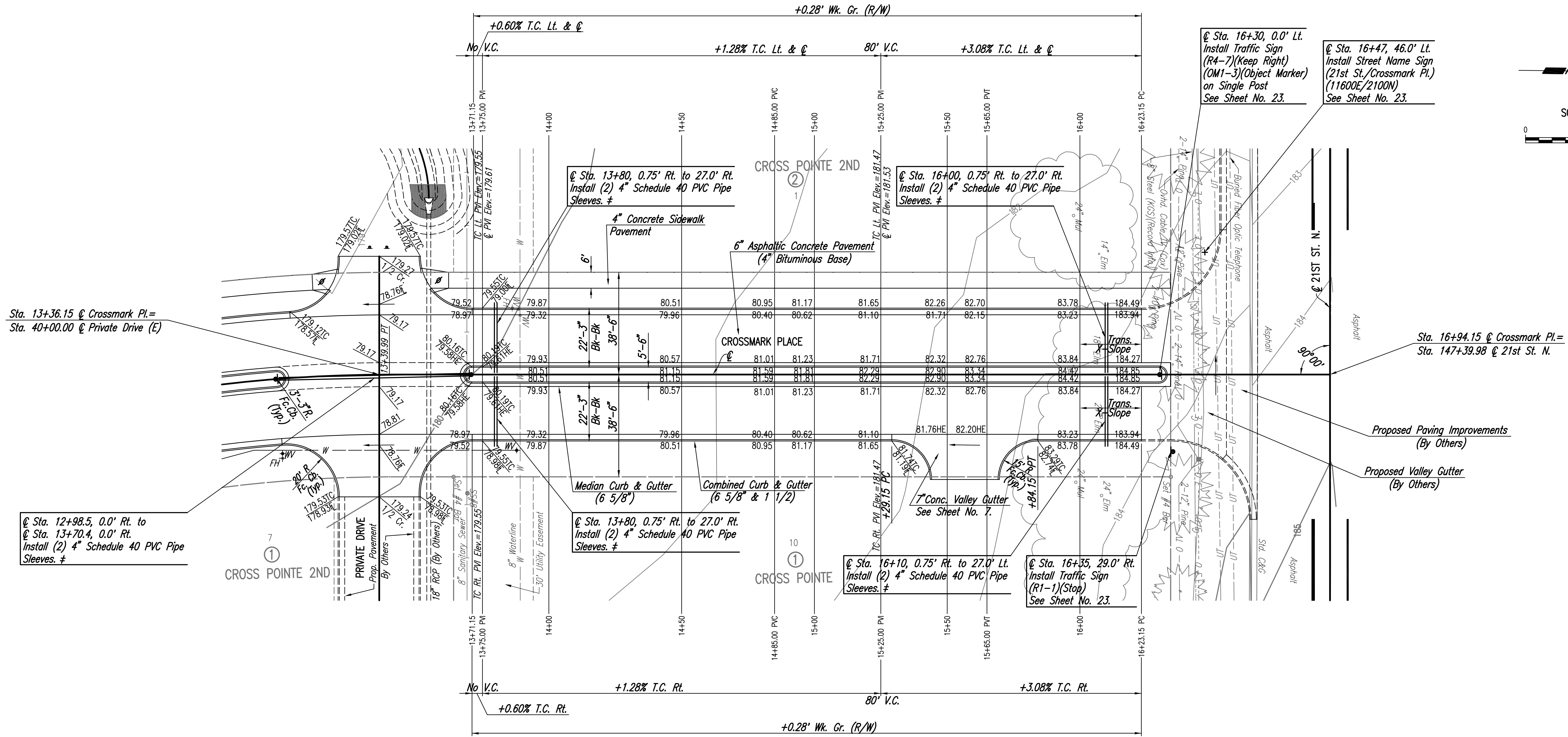


Saved: 12-18-2007 8:56:36 AM by BJS  
 Plot Scale: 1/20 12-18-2007 10:27:55 AM by BJS  
 J:\SENTOUT\2007\07293\2007-12-18 to city\000\DWG\06-PAVING PLAN-CROSSMARK PL



Sta. 13+36.15 @ Crossmark Pl. =  
 Sta. 40+00.00 @ Private Drive (E)

@ Sta. 12+98.5, 0.0' Rt. to  
 @ Sta. 13+70.4, 0.0' Rt.  
 Install (2) 4" Schedule 40 PVC Pipe  
 Sleeves. #

@ Sta. 13+80, 0.75' Rt. to 27.0' Rt.  
 Install (2) 4" Schedule 40 PVC Pipe  
 Sleeves. #

@ Sta. 16+00, 0.75' Rt. to 27.0' Rt.  
 Install (2) 4" Schedule 40 PVC Pipe  
 Sleeves. #

@ Sta. 16+30, 0.0' Lt.  
 Install Traffic Sign  
 (R4-7)(Keep Right)  
 (OM1-3)(Object Marker)  
 on Single Post  
 See Sheet No. 23.

@ Sta. 16+47, 46.0' Lt.  
 Install Street Name Sign  
 (21st St./Crossmark Pl.)  
 (11600E/2100N)  
 See Sheet No. 23.

Sta. 16+94.15 @ Crossmark Pl. =  
 Sta. 147+39.98 @ 21st St. N.

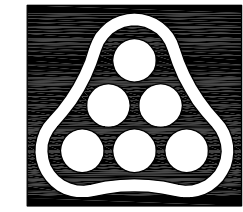
Proposed Paving Improvements  
 (By Others)

Proposed Valley Gutter  
 (By Others)

# Sleeves to be 42" below top of curb.  
 Each end of 4" PVC pipe sleeves shall be capped  
 and marked with steel "T" posts or 2" dia.  
 steel pipe a maximum of 12" above finished  
 grade. Pipe, caps, markers, and installation  
 thereof shall be Subsidiary to Combined Curb  
 & Gutter (6 5/8").

NOTE: For future reference in locating schedule 40 PVC pipe sleeve,  
 the contractor will be required to place a permanent marking on the  
 curb adjacent to each pipe sleeve. The marking shall consist of a  
 letter at least 4 inches in height stamped into the curb face immediately  
 upon placement of the curb and gutter. The letter "S" shall be used  
 for schedule 40 PVC pipe sleeve. This work shall be Subsidiary to  
 Combined Curb and Gutter (6 5/8").

Construct Std. Wheelchair Ramp, See Sheet No. 8



No.	Revision	By	Date
CROSS POINT 2ND ADDITION-PHASE 1 PAVING AND INCIDENTAL DRAINAGE IMPROVEMENTS <b>CROSSMARK PLACE</b> STA. 13+00 TO STA. 16+94.15 JAMES L. ARMOUR, P.E.- CITY ENGINEER CITY OF WICHITA PROJECT NO. 472-84640			
<b>Professional Engineering Consultants, P.A.</b> 303 S. TOPEKA • WICHITA, KANSAS 67202 316-262-2691 • FAX 316-262-3003			
Designed by	BDB, BMM	Job No.	35-07293-000
Drawn by	BJS, TAT	Date	October 2007
			Sheet 6 of 29