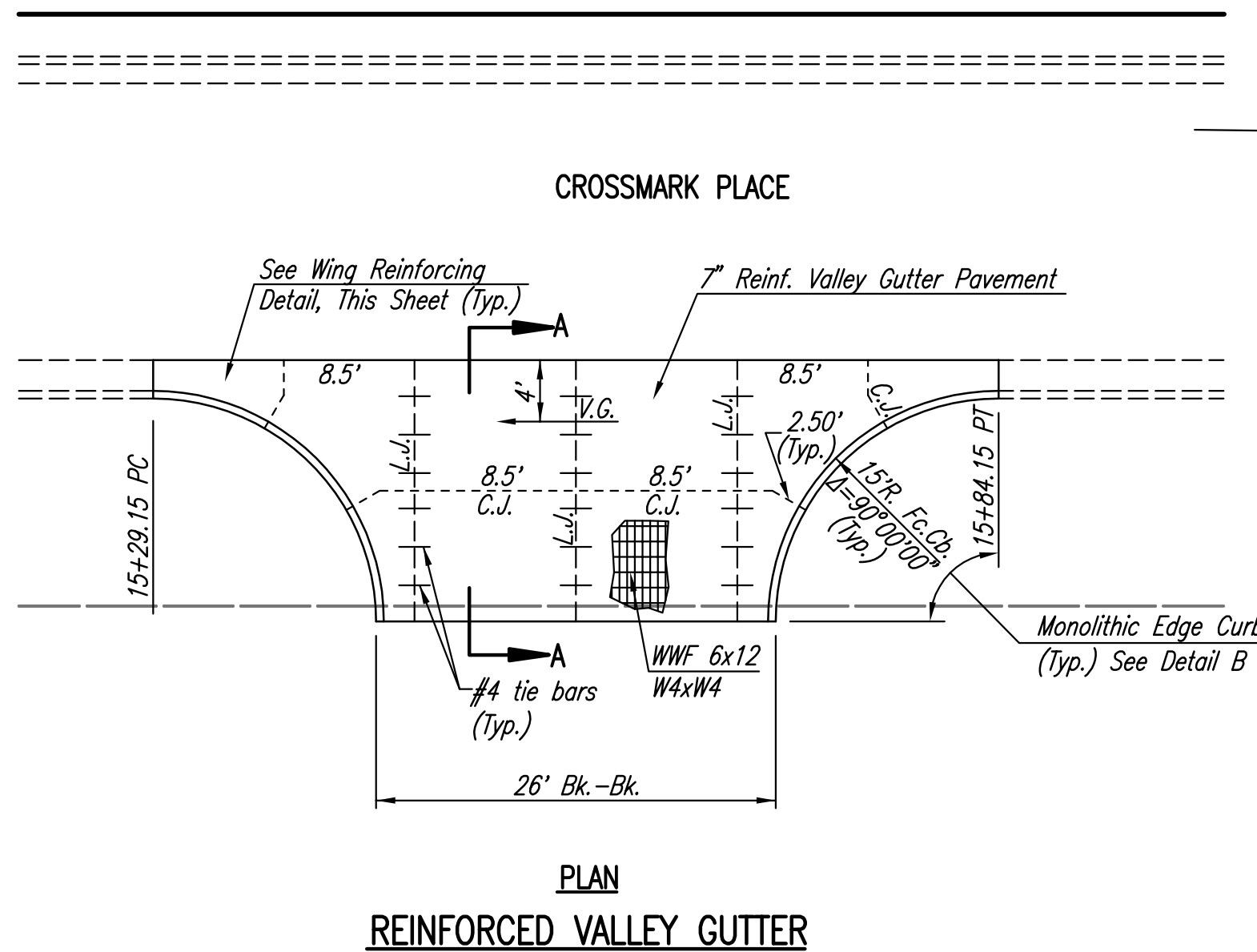
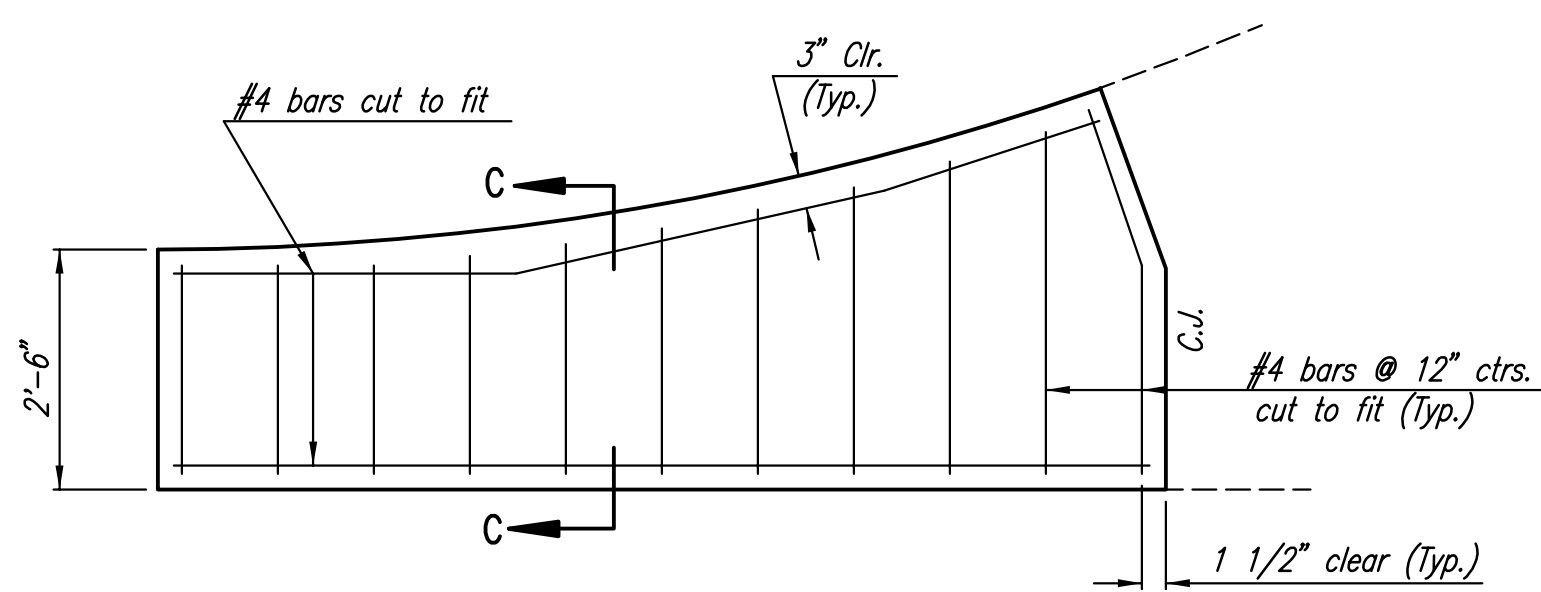


SCALE: 1" = 10'

6"x12" W4xW4 WIRE FABRIC REINFORCING SHALL BE PLACED SUCH THAT THE WIRES WITH THE 6" SPACING WILL RUN PARALLEL WITH THE LONGITUDINAL JOINT.

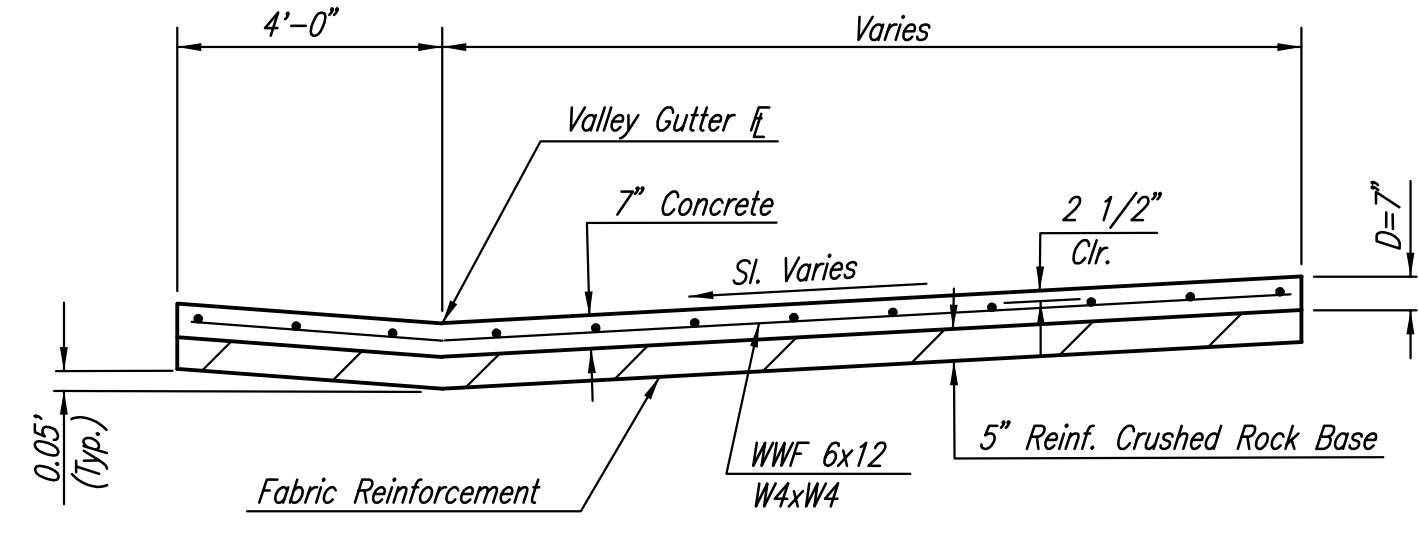


SCALE: 1" = 10'



WING REINFORCING DETAIL

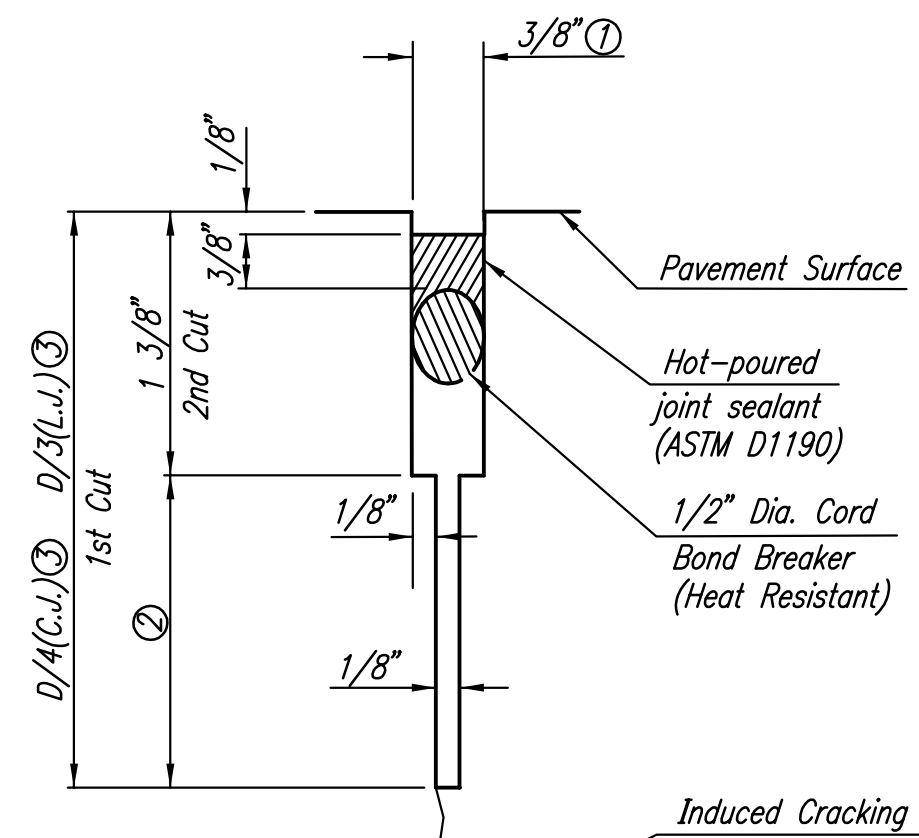
NOTE: OMIT WIRE FABRIC REINFORCING IN THIS SECTION.



SECTION A-A

NOTE: OMIT REINFORCING MESH AT ALL JOINTS

NOTE: ALL CONCRETE VALLEY GUTTER REINFORCEMENT SHALL BE ADEQUATELY SUPPORTED BY BAR CHAIRS IN THE REQUIRED POSITION UNLESS APPROVED OTHERWISE BY THE ENGINEER.

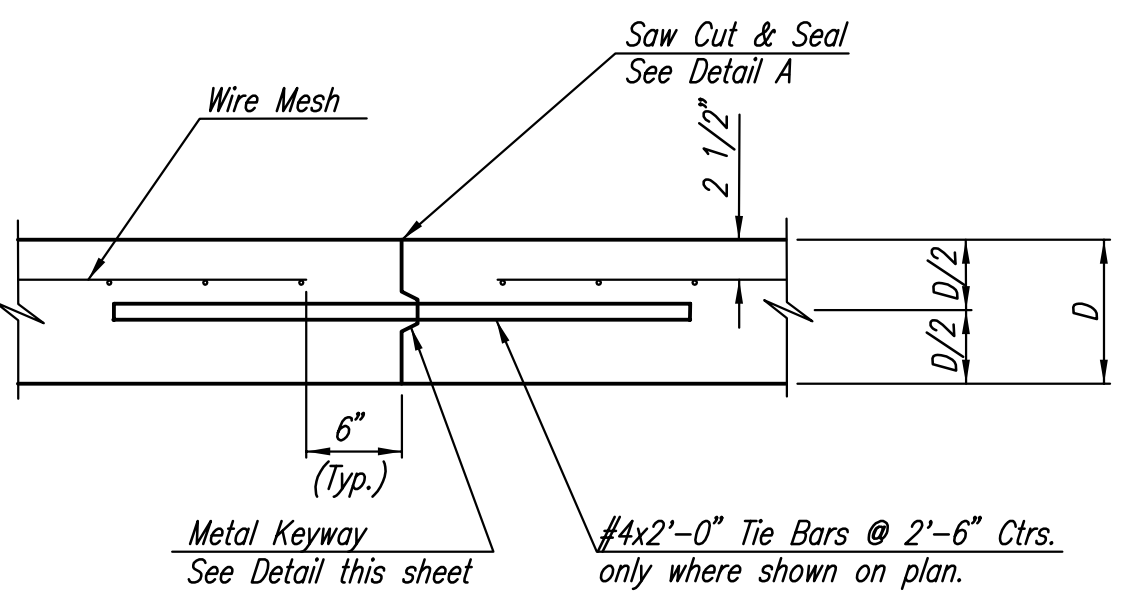


DETAIL A

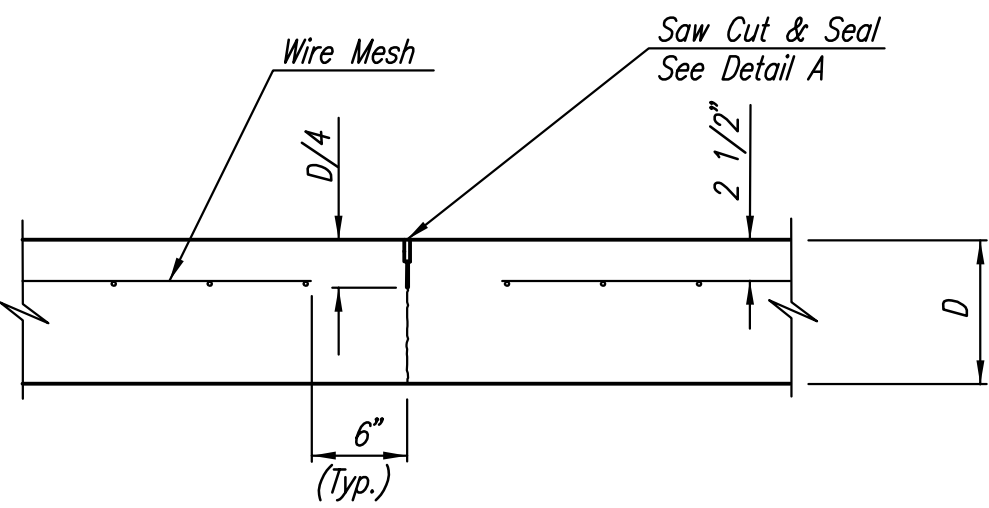
① To be accomplished in 2 cuts for Longitudinal Joints and Contraction Joints. Initial cut to be 1/8" wide.

② Eliminate bottom of cut when metal keyway is used as part of Longitudinal or Transverse Construction Joint and at Doweled Construction Joint Locations.

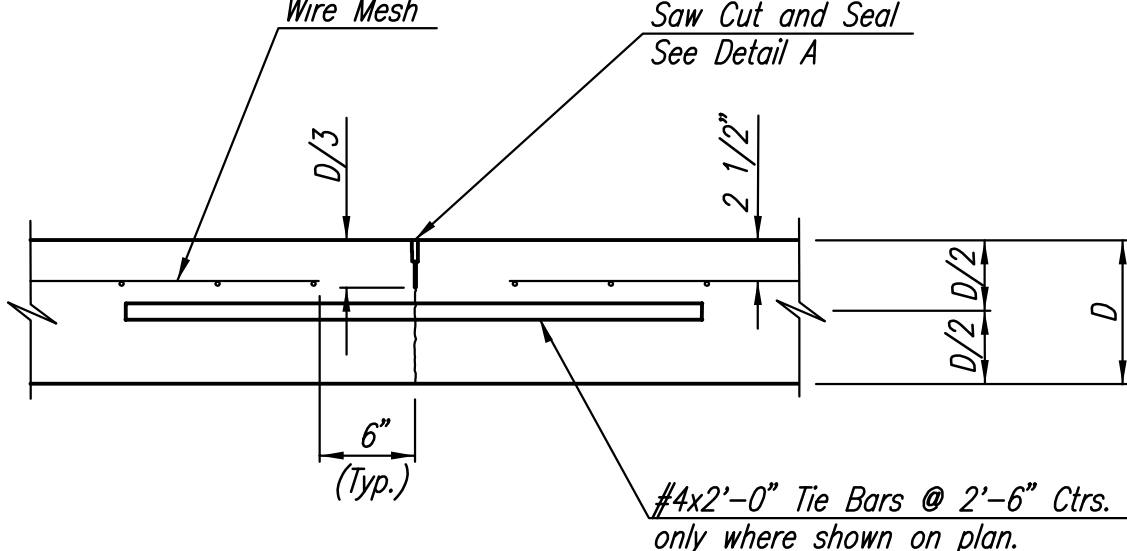
③ 1 1/2" Minimum



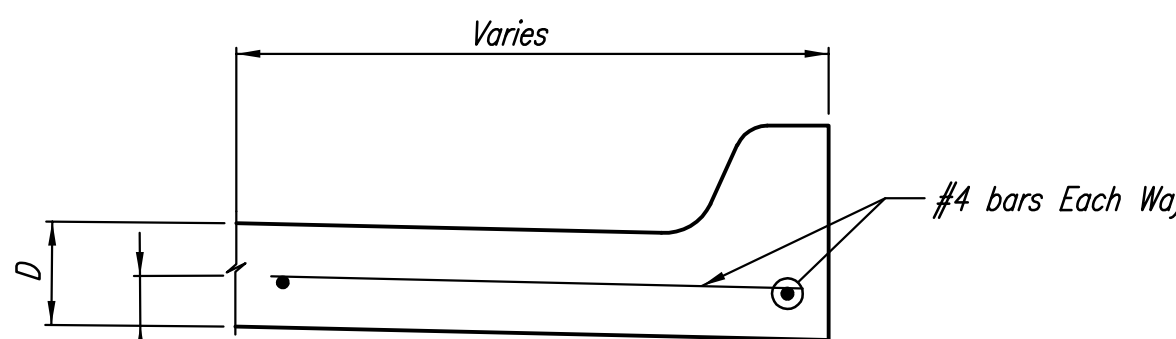
LONGITUDINAL CONSTRUCTION JOINT DETAIL REINFORCED PAVEMENT (TRANSVERSE SECTION) (ALTERNATE L.J.)



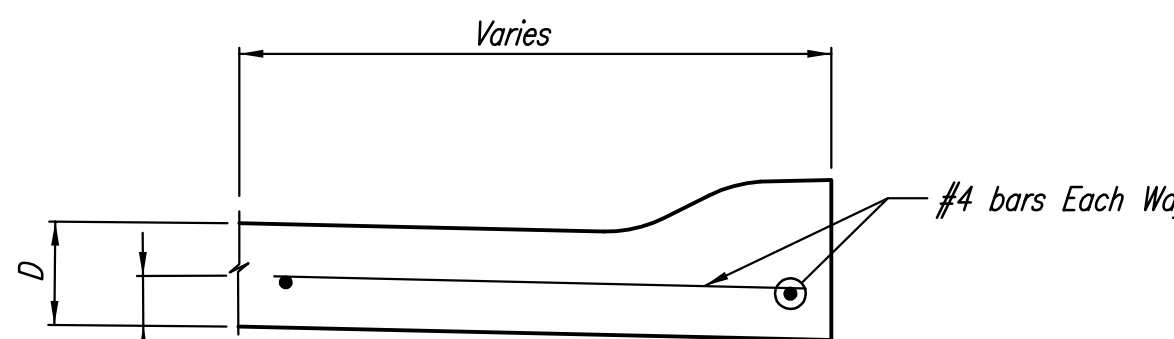
CONTRACTION JOINT DETAIL REINFORCED PAVEMENT (C.J.)



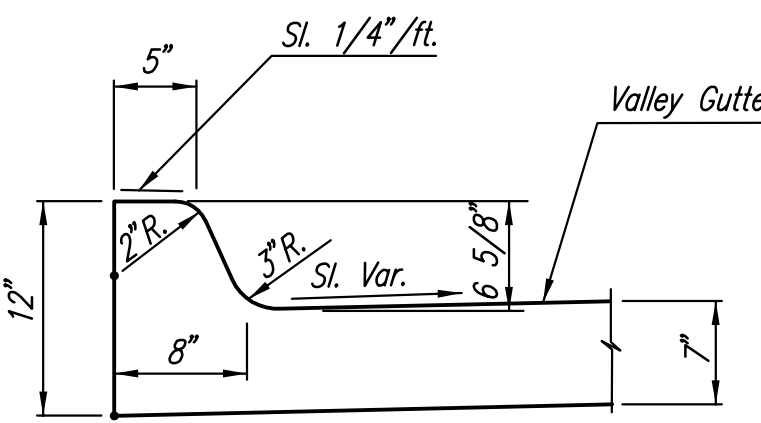
LONGITUDINAL JOINT DETAIL REINFORCED PAVEMENT (TRANSVERSE SECTION) (L.J.)



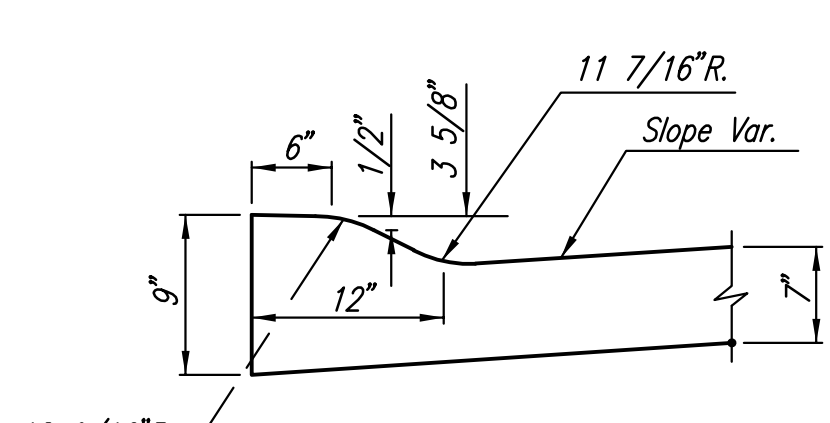
SECTION C-C



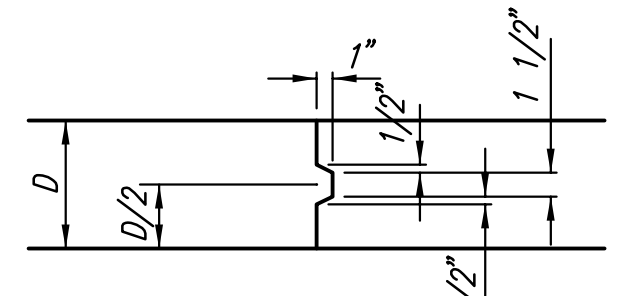
SECTION C-C (ROLL-TYPE CURB)



DETAIL B

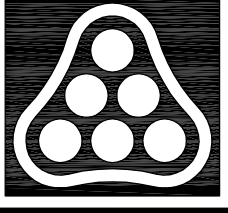


DETAIL C (ROLL-TYPE CURB)



KEYWAY DETAIL

Sowed 12-12-2007 9:08:52 AM by BJS
 Plot Scale 1:10 12-18-2007 10:29:22 AM by BJS
 J:\SENTOUT\2007\07293\2007-12-18 to City\DWG\07-VALLEY GUTTER DTLs



No.	Revision	By	Date
CROSS POINTE 2ND ADDITION-PHASE 1 PAVING AND INCIDENTAL DRAINAGE IMPROVEMENTS VALLEY GUTTER PLAN JAMES L. ARMOUR, P.E. - CITY ENGINEER CITY OF WICHITA PROJECT NO. 472-84640 Professional Engineering Consultants, P.A. 303 S. TOPKA • WICHITA, KANSAS 67202 316-262-2691 • FAX 316-262-3003			
Designed by	BDB, BMM	Job No.	35-07293-000
Drawn by	BJS, TAT	Date	October 2007
			Sheet 7 of 29