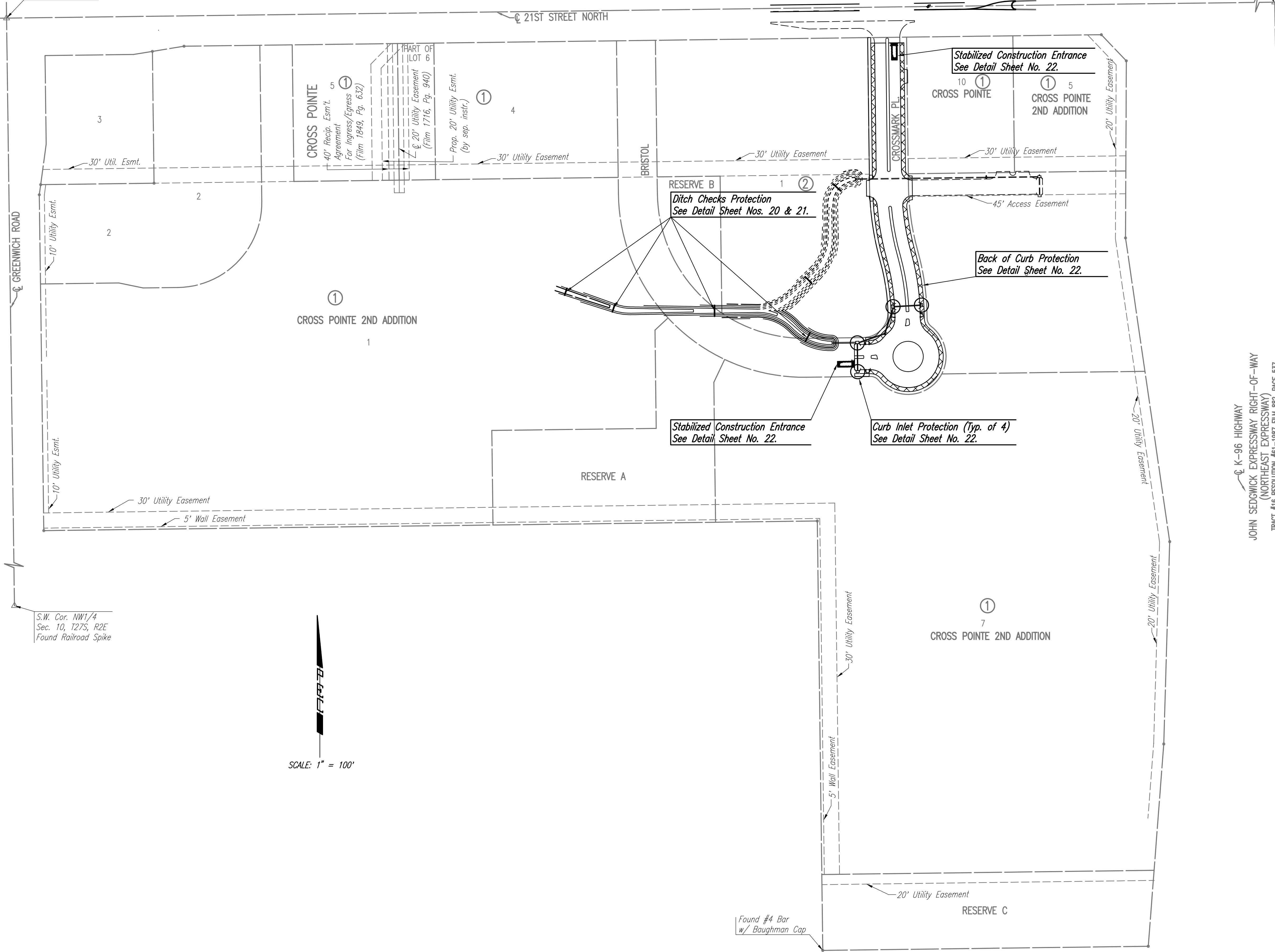


N.W. Cor. NW1/4
Sec. 10, T27S, R2E
Found Chiseled "+"
In Concrete

N.E. Cor. NW 1/4
Sec. 10, T27S, 2E



GENERAL NOTES

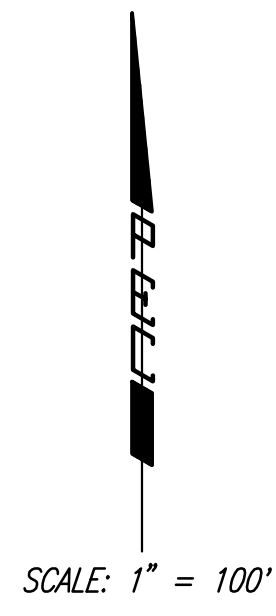
1. THE EROSION CONTROL DEVICES SHOWN ON THIS SHEET ARE CONSIDERED MINIMUM STANDARDS. WHENEVER SEDIMENT ENTERS THE STREETS, STORM SEWERS, DITCHES, OR PONDS, CONTRACTOR WILL INSTALL ADDITIONAL DEVICES, AS NEEDED, TO CORRECT THE PROBLEM.
2. THE EROSION CONTROL DEVICES SHOWN HEREON MUST BE IN PLACE AT ALL TIMES DURING CONSTRUCTION UNTIL SUCH TIME AS THE SITE IS REESTABLISHED WITH PAVING OR GRASS. TEMPORARY OR PERMANENT SEED AND MULCH WILL BE INSTALLED WHEN EARTHWORK ACTIVITIES CEASE IN AN AREA FOR 14 DAYS OR MORE.
3. BACK OF CURB PROTECTION: AS SHOWN ON CITY STANDARD DETAILS. THESE DEVICES MUST REMAIN IN PLACE UNTIL THE AREA BETWEEN THE CURB AND RIGHT-OF-WAY LINE HAS BEEN PERMANENTLY STABILIZED.
4. ANY MUD INADVERTENTLY TRACKED ONTO ANY STREET WILL BE CLEANED UP BY THE CONTRACTOR, AT THE END OF EACH DAY'S WORK.
5. CONTRACTOR TO FURNISH A TRUCK WASH-OUT PIT TO BE PLACED AT A CONVENIENT LOCATION THAT DOES NOT CONFLICT WITH CONSTRUCTION. CONTRACTOR SHALL CLEAN OUT AND BACKFILL PIT PRIOR TO FINAL INSPECTION.

LEGEND

- Curb Inlet Protection
- Back of Curb Protection
- Silt Fence Barrier
- Ditch Check Protection

K-96 HIGHWAY
JOHN SEDGWICK EXPRESSWAY RIGHT-OF-WAY
(NORTHEAST EXPRESSWAY)
TRACT #16 RESOLUTION #61-1987 FILE 882, PAGE 537

Saved 12-12-2007 4:44:16 PM by BJS
 Plot Scale 1:100 12-18-2007 10:42:11 AM
 J:\SENTOUT\2007\07293\2007-12-18 to CH\000\DWG\18-EROSION CONTROL PLAN



No.	Revision	By	Date
CROSS POINTE 2ND ADDITION-PHASE 1 PAVING AND INCIDENTAL DRAINAGE IMPROVEMENTS EROSION CONTROL PLAN JAMES L. ARMOUR, P.E. - CITY ENGINEER CITY OF WICHITA PROJECT NO. 472-84640 Professional Engineering Consultants, P.A. 303 S. TOPEKA • WICHITA, KANSAS 67202 316-262-2691 • FAX 316-262-3003			
Designed by	BDB, BMM	Job No.	35-07293-000
Drawn by	BJS, TAT	Date	October 2007
			Sheet 18 of 29

