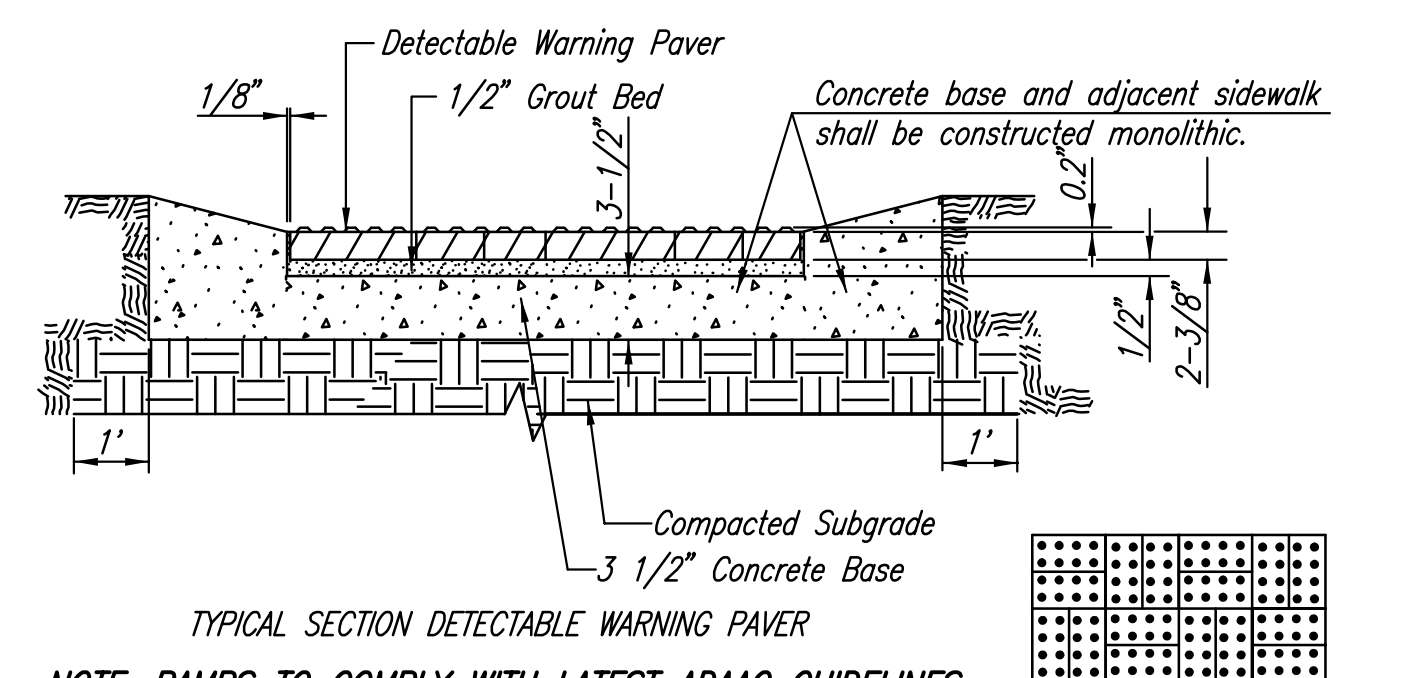
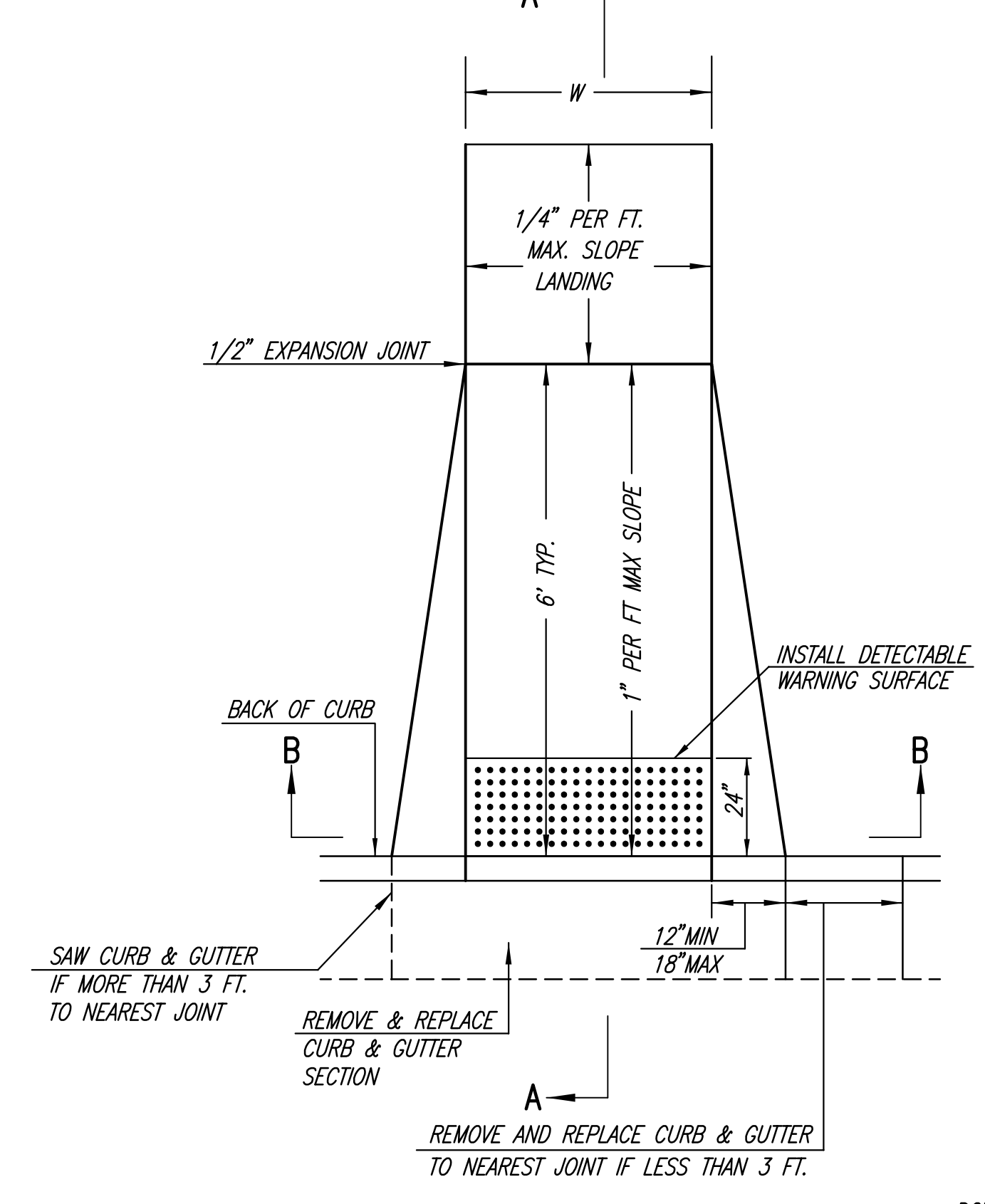


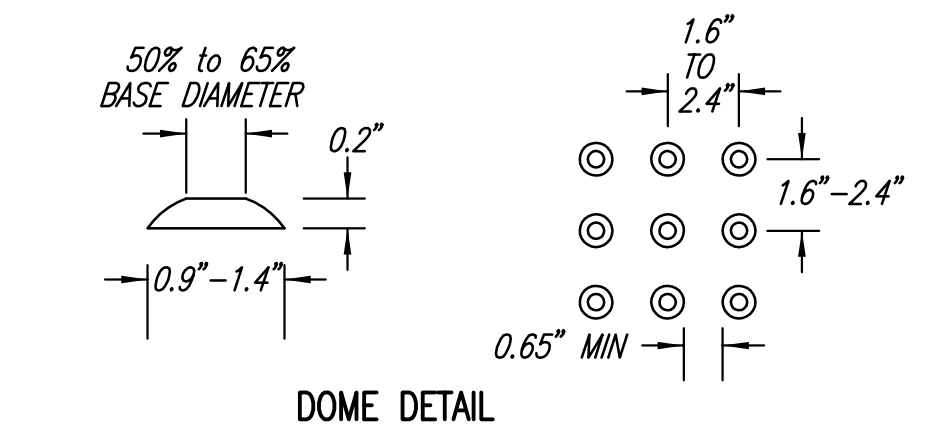
PLAN  
REINFORCED VALLEY GUTTER

W= 4'0" FOR STANDARD RAMP  
W= 5'0" FOR RAMPS AT SCHOOL CROSSWALKS  
(OR TO MATCH EXISTING)

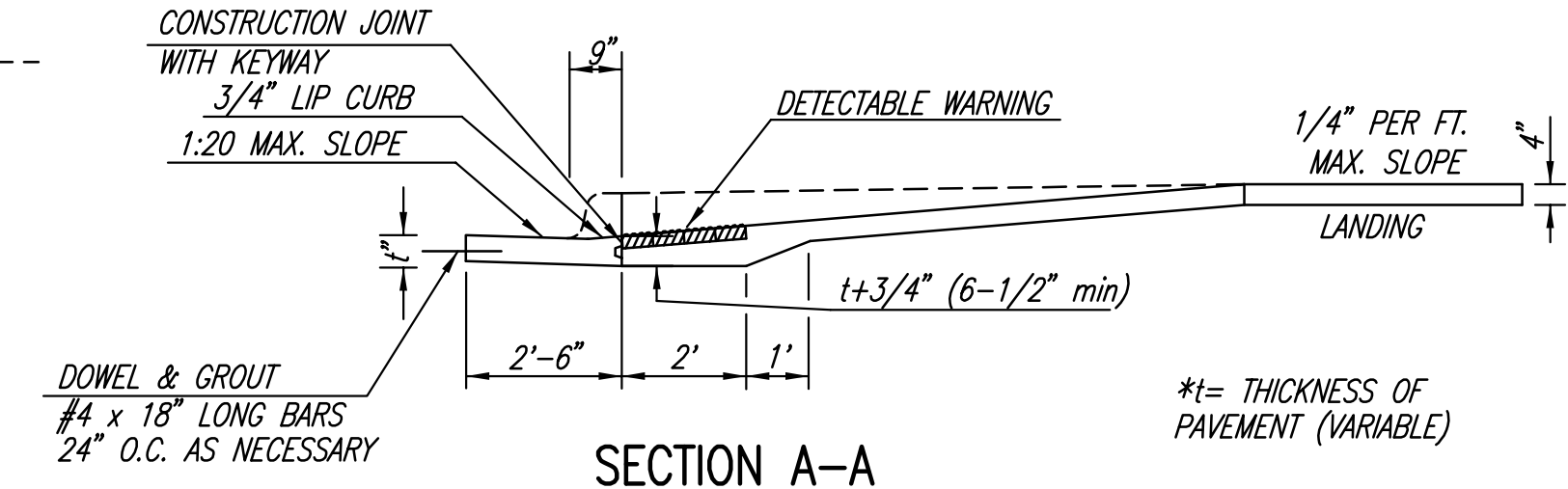


NOTE: RAMPS TO COMPLY WITH LATEST ADAAG GUIDELINES. PAVESTONE DETECTABLE WARNING PAVERS (OR AN APPROVED EQUAL) SHALL BE USED IN ALL WHEELCHAIR RAMPS. THE RED PAVER SHALL BE INSTALLED USING A BASKET WEAVE/PARQUET PATTERN. OTHER PATTERNS MAY BE USED WITH APPROVAL OF ENGINEER. SAND FILL JOINTS. ALIGN DOMES IN THE DIRECTION OF PEDESTRIAN TRAVEL.

SECTION B-B



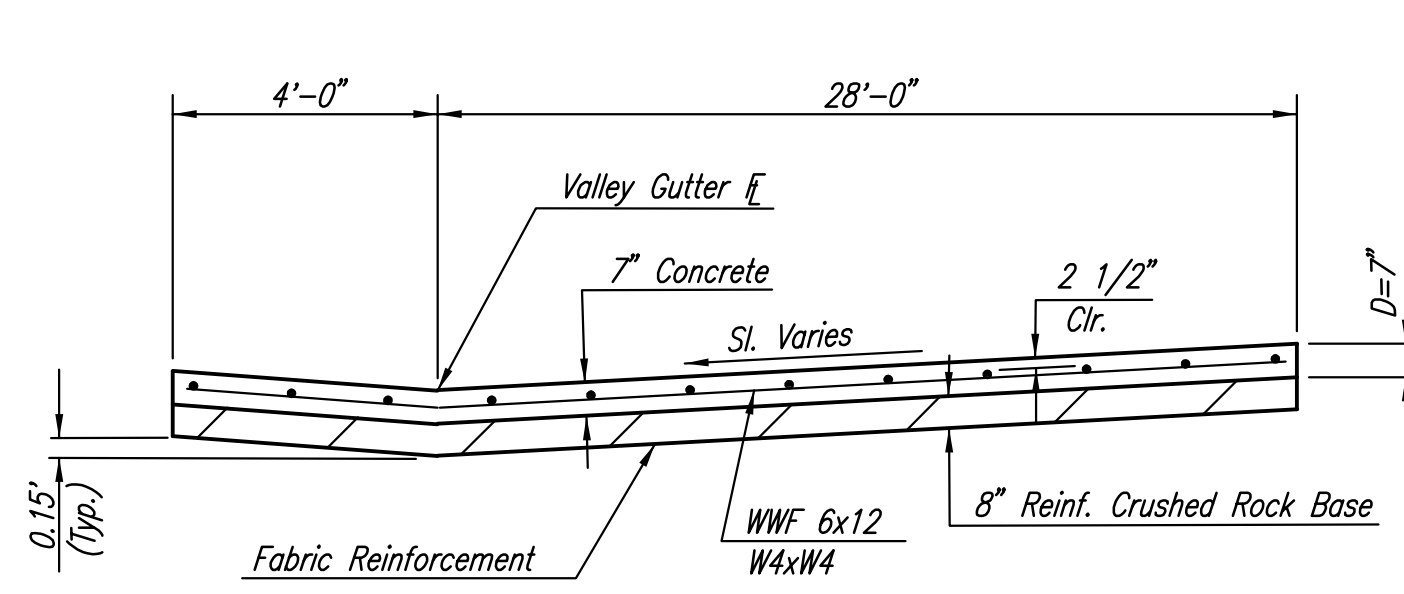
DOME DETAIL



SECTION A-A

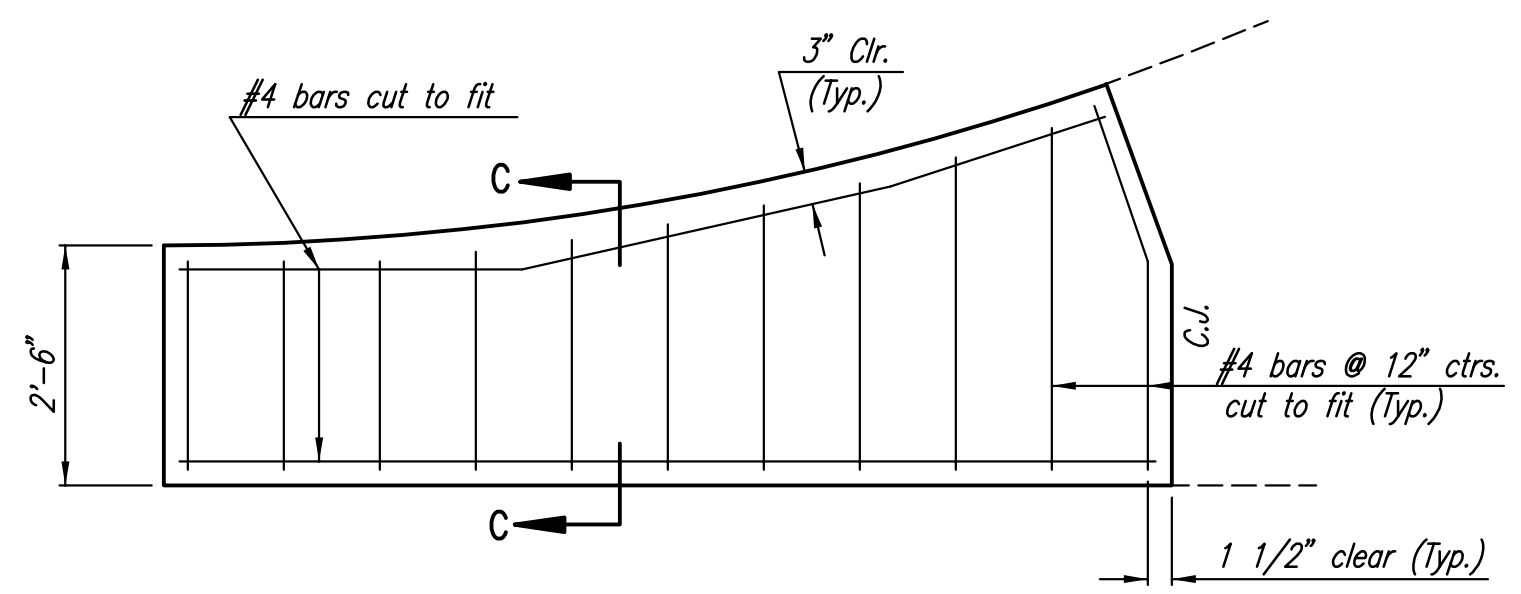
TYPICAL WHEELCHAIR RAMP DETAILS

AUGUST 4, 2003



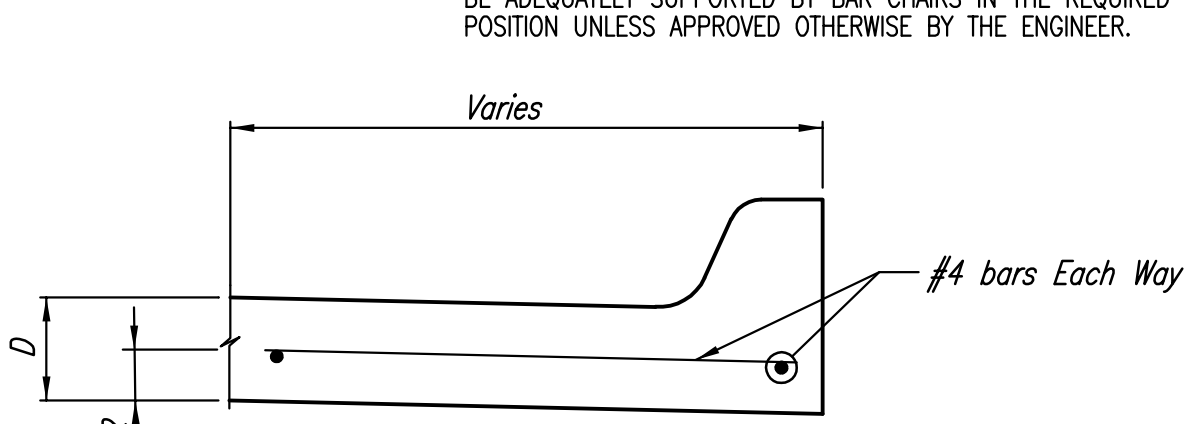
SECTION A-A

NOTE: OMIT REINFORCING MESH AT ALL JOINTS  
NOTE: ALL CONCRETE VALLEY GUTTER REINFORCEMENT SHALL BE ADEQUATELY SUPPORTED BY BAR CHAIRS IN THE REQUIRED POSITION UNLESS APPROVED OTHERWISE BY THE ENGINEER.

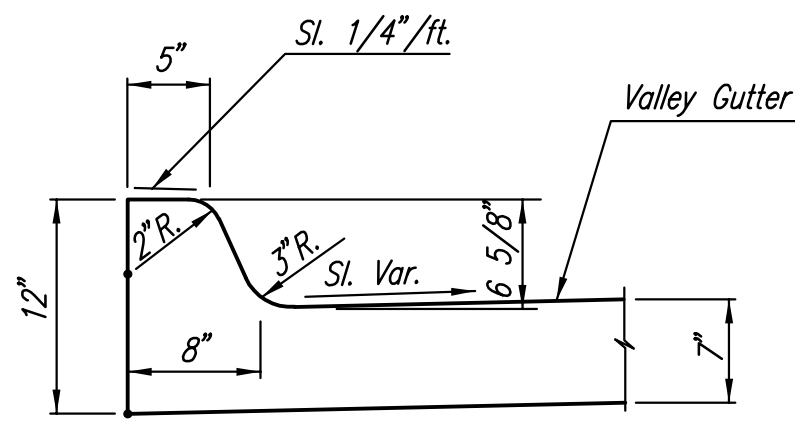


WING REINFORCING DETAIL

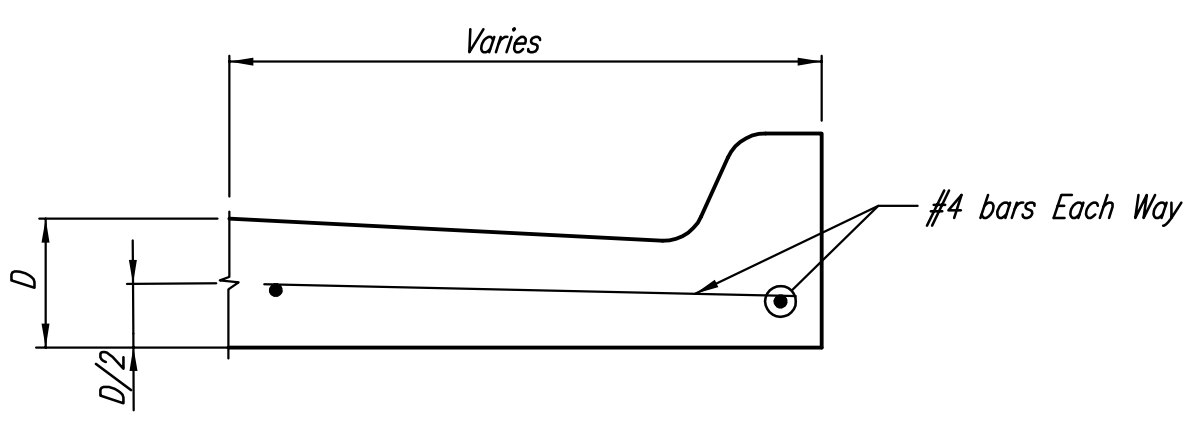
NOTE: OMIT WIRE FABRIC REINFORCING IN THIS SECTION.



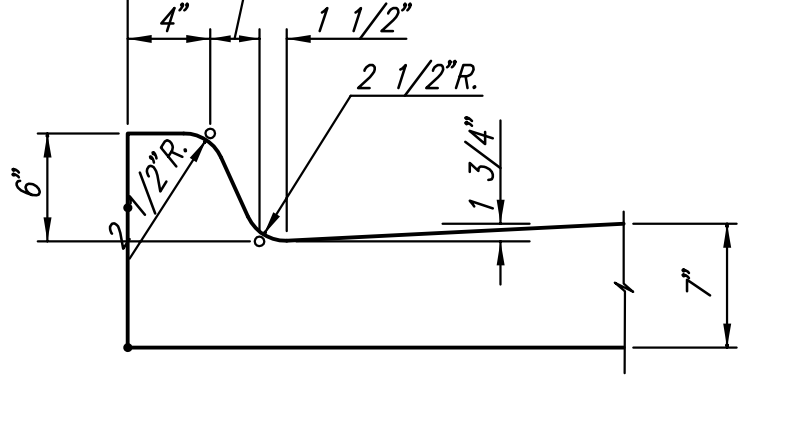
SECTION C-C  
(6 5/8")



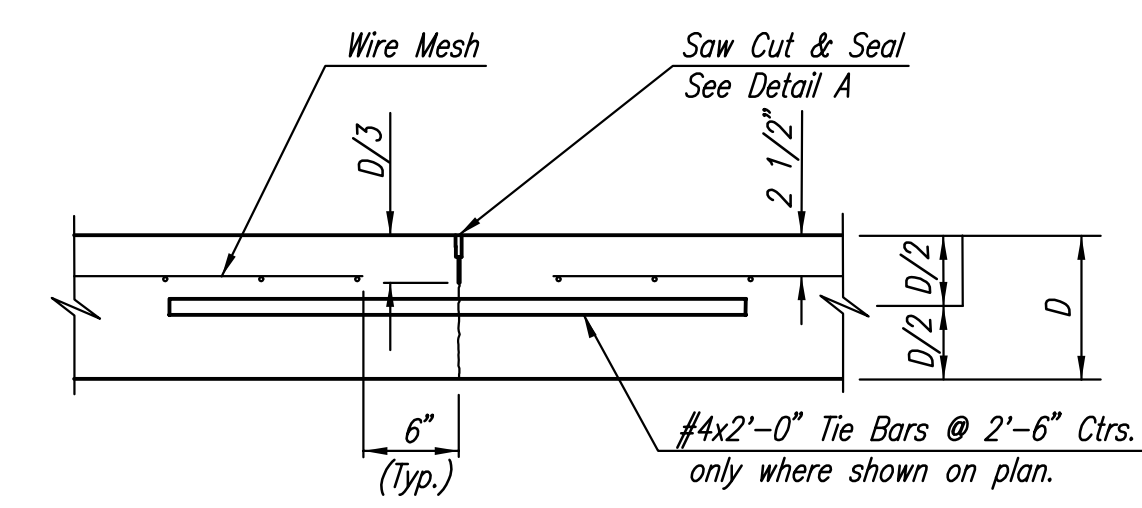
DETAIL B  
(6 5/8")



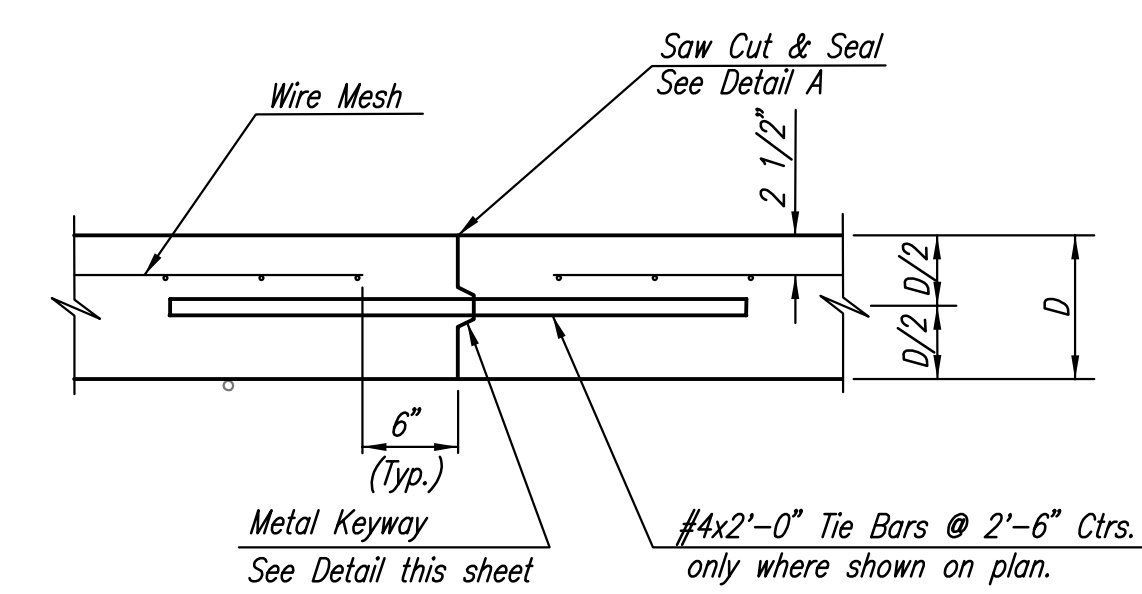
SECTION C-C  
(TYPE 1)



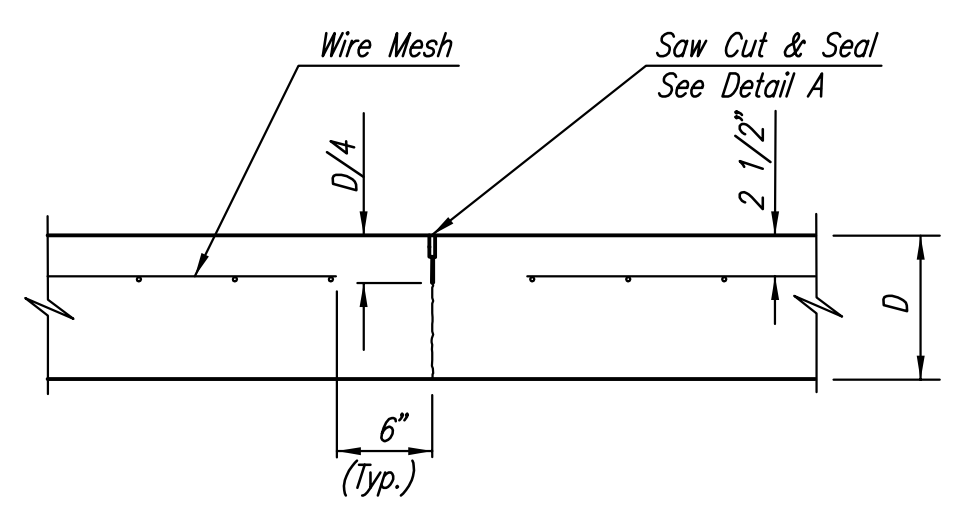
DETAIL C  
(TYPE 1)



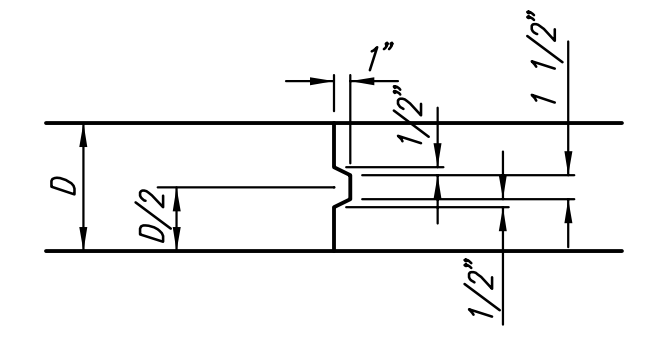
LONGITUDINAL JOINT DETAIL  
REINFORCED PAVEMENT  
(TRANSVERSE SECTION)  
(L.J.)



LONGITUDINAL CONSTRUCTION JOINT DETAIL  
REINFORCED PAVEMENT  
(TRANSVERSE SECTION)  
(ALTERNATE L.J.)

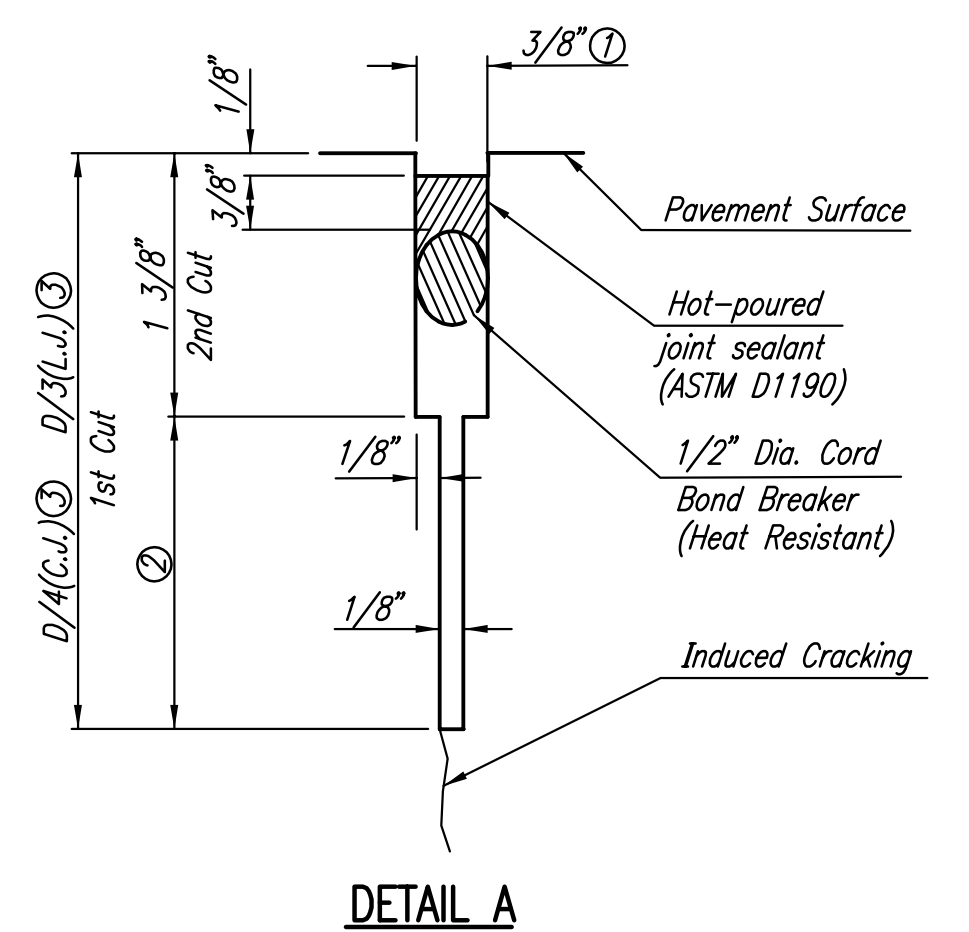


CONTRACTION JOINT DETAIL  
REINFORCED PAVEMENT  
(C.J.)



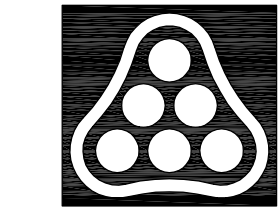
KEYWAY DETAIL

- ① To be accomplished in 2 cuts for Longitudinal Joints and Contraction Joints. Initial cut to be 1/8" wide.
- ② Eliminate bottom of cut when metal keyway is used as part of Longitudinal or Transverse Construction Joint and at Doweled Construction Joint Locations.
- ③ 1 1/2" Minimum



DETAIL A

Sawed 01-02-2008 1:39:38 PM by BJS  
Plot Scale 1:10 01-02-2008 4:04:51 PM  
C:\2007\07293\002\07293-002-C-VALGUTPLAN



No.	Revision	By	Date
CROSS POINT 2ND ADDITION-PHASE 3 21ST ST. N. DECEL LANE <b>VALLEY GUTTER PLAN</b> JAMES L. ARMOUR, P.E. - CITY ENGINEER CITY OF WICHITA PROJECT NO. 472-84231 <b>Professional Engineering Consultants, P.A.</b> 303 S. TOPEKA • WICHITA, KANSAS 67202 316-262-2691 • FAX 316-262-3003			
Designed by	BDB, BMM	Job No.	35-07293-002
Drawn by	BJS, TAT	Date	October 2007
			Sheet 6 of 12