

SANITARY SEWER PLANS FOR
COUNTRY HOLLOW ADDITION
PHASE 2

BUBBLE MAP
SHEET TITLE
468-84103
PROJECT NUMBER

DESIGN BY: **DFL**
DRAWN BY: **DM**
CHECKED BY: **GJA**

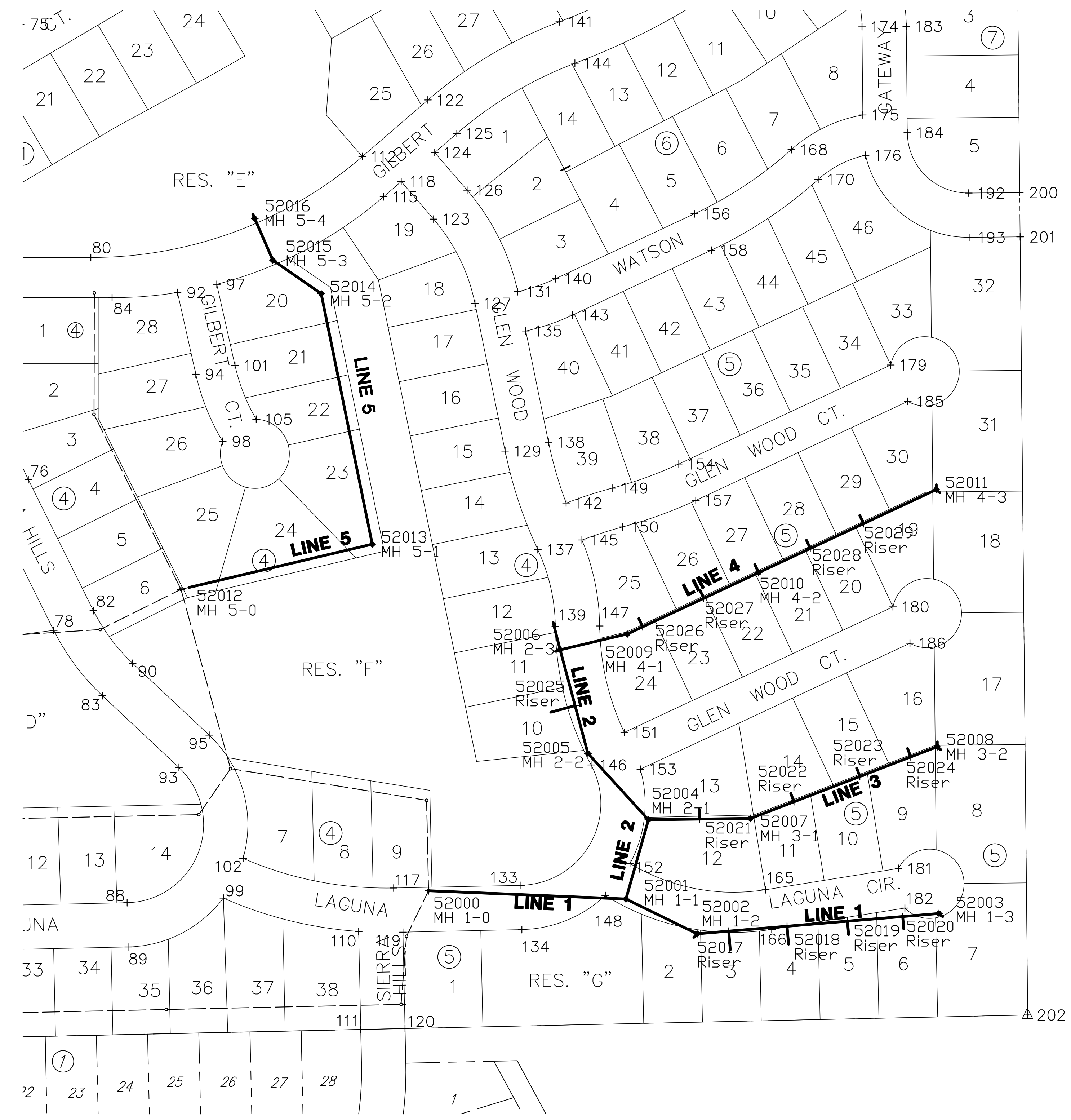
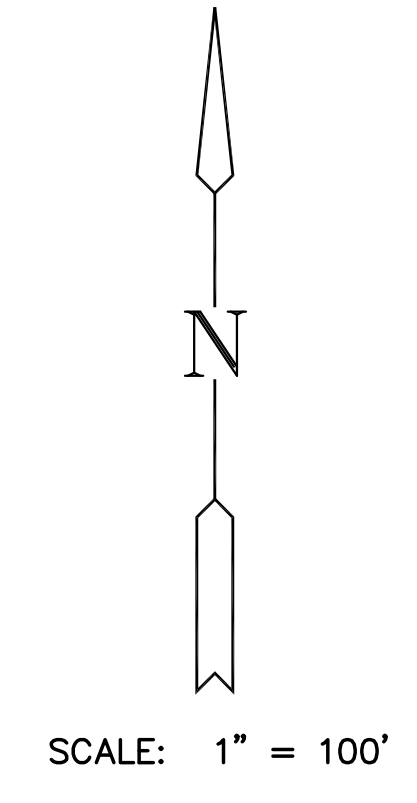
ISSUED
December 2007
REVISED

SHEET NO.
10 of 17

Point No.	Northing	Easting	Description
137	1682013.15	1693737.35	PI
138	1682168.40	1693752.82	PI
139	1681902.15	1693762.78	PI
140	1682404.61	1693762.97	PI
141	1682775.82	1693768.41	PI
142	1682080.46	1693778.29	PI
143	1682352.06	1693787.52	PI
144	1682715.94	1693791.01	PI
145	1682027.11	1693801.16	PI
146	1681702.08	1693814.40	PI
147	1681902.86	1693826.77	PI
148	1681513.36	1693834.99	PI
149	1682102.00	1693844.83	PI
150	1682045.91	1693859.60	PI
151	1681749.05	1693862.33	PI
152	1681559.56	1693870.60	PI
153	1681695.90	1693885.57	PI
154	1682136.84	1693941.12	PI
155	1683680.59	1693955.17	PI
156	1682498.34	1693963.63	PI
157	1682084.29	1693965.67	PI
158	1682445.79	1693988.18	PI
162	1682920.49	1694025.15	PI
164	1682870.14	1694064.66	PI
165	1681521.74	1694066.32	PI
166	1681464.47	1694075.49	PI
167	1682978.89	1694099.55	PI
168	1682591.14	1694103.82	PI
169	1682924.46	1694133.87	PI
170	1682548.01	1694142.61	PI
171	1682861.74	1694176.71	PI
172	1682961.15	1694186.31	PI
174	1682768.56	1694205.97	PI
175	1682641.23	1694207.16	PI
176	1682582.94	1694211.11	PI
177	1682897.84	1694229.56	PI
179	1682279.92	1694247.44	PI
180	1681930.46	1694250.70	PI
181	1681552.54	1694258.72	PI
182	1681495.27	1694267.89	PI
183	1682769.15	1694269.97	PI
184	1682615.51	1694271.40	PI
185	1682227.37	1694271.99	PI
186	1681877.91	1694275.25	PI
192	1682528.33	1694360.22	PI
193	1682464.34	1694360.81	PI
194	1683092.29	1694416.74	PI
195	1683028.30	1694418.10	PI
196	1683874.01	1694420.79	PI
198	1683092.54	1694428.38	PI
199	1683028.54	1694429.00	PI
200	1682529.02	1694433.85	PI
201	1682465.02	1694434.47	PI
202	1681340.76	1694445.39	PI

Point No.	Northing	Easting	Description
1	1682642.37	1691847.82	PI
2	1682163.41	1691854.00	PI
4	1682062.42	1691855.31	PI
11	1682062.64	1691872.48	PI
16	1682445.77	1692014.38	PI
17	1682165.52	1692017.98	PI
18	1681735.66	1692018.78	PI
20	1681685.64	1692048.14	PI
21	1682092.01	1692050.34	PI
23	1682446.51	1692072.37	PI
25	1682166.43	1692075.97	PI
26	1681409.80	1692093.09	PI
27	1681359.84	1692122.54	PI
28	1682114.90	1692147.60	PI
31	1682240.76	1692337.40	PI
32	1682190.35	1692366.08	PI
33	1681948.95	1692382.07	PI
34	1682207.51	1692396.24	PI
35	1681592.99	1692403.87	PI
36	1681898.93	1692411.43	PI
37	1681543.03	1692433.32	PI
38	1682239.16	1692451.87	PI
39	1682061.72	1692479.20	PI
40	1681997.90	1692506.76	PI
41	1681624.60	1692512.87	PI
42	1681566.63	1692514.71	PI
43	1681941.14	1692518.68	PI
45	1681914.57	1692520.65	PI
46	1681625.14	1692529.86	PI
47	1681567.25	1692534.17	PI
48	1682352.99	1692534.64	PI
49	1682093.37	1692534.82	PI
50	1682302.58	1692563.32	PI
51	1681916.61	1692584.61	PI
52	1681598.19	1692594.75	PI
54	1682417.95	1692699.05	PI
56	1681493.65	1692705.00	PI
57	1681429.67	1692706.37	PI
58	1683396.99	1692713.21	PI
59	1682653.62	1692722.76	PI
60	1682428.86	1692756.02	PI
61	1682667.53	1692812.41	PI
62	1682617.60	1692841.92	PI
64	1682377.29	1692845.93	PI
65	1682435.29	1692845.95	PI
66	1682300.50	1692893.34	PI
67	1682377.27	1692893.37	PI
68	1683402.07	1692930.01	PI
70	1682085.69	1692943.76	PI
71	1682300.48	1692957.34	PI
72	1682377.25	1692957.37	PI
73	1682815.61	1692964.18	PI
75	1682772.34	1692989.76	PI
76	1682114.19	1693001.06	PI
77	1682845.12	1693014.12	PI
78	1681896.57	1693037.81	PI
79	1682801.84	1693039.69	PI
80	1682435.20	1693091.39	PI
82	1681925.07	1693095.11	PI
83	1681802.19	1693108.02	PI
84	1682377.18	1693122.13	PI
86	1683205.71	1693133.57	PI
88	1681503.01	1693143.83	PI
89	1681439.03	1693145.19	PI
90	1681848.88	1693151.79	PI
92	1682384.64	1693216.66	PI
93	1681698.43	1693218.70	PI
94	1682266.64	1693243.12	PI
95	1681745.12	1693262.47	PI
96	1682934.25	1693263.76	PI
97	1682396.51	1693273.44	PI
98	1682169.63	1693281.87	PI
99	1681509.70	1693282.95	PI
100	1682884.32	1693293.27	PI
101	1682279.33	1693299.71	PI
102	1681567.06	1693311.52	PI
105	1682201.58	1693330.35	PI
110	1681461.46	1693478.49	PI
111	1681319.83	1693481.51	PI
112	1682581.06	1693483.74	PI
113	1683212.19	1693493.52	PI
115	1682523.04	1693514.48	PI
117	1681524.23	1693529.07	PI
118	1682545.02	1693539.94	PI
119	1681460.51	1693542.52	PI
120	1681321.22	1693545.49	PI
122	1682662.87	1693578.50	PI
123	1682490.72	1693586.82	PI
124	1682586.85	1693588.38	PI
125	1682614.43	1693620.33	PI
126	1682532.55	1693635.26	PI
127	1682369.13	1693646.57	PI
129	1682155.61	1693690.11	PI
131	1682385.90	1693708.44	PI
133	1681528.16	1693713.03	PI
134	1681464.17	1693714.39	PI
135	1682329.07	1693720.05	PI

Point No.	Northing	Easting	Description
52000	1681520.31	1693579.46	MH 1-0
52001	1681508.36	1693864.79	MH 1-1
52002	1681458.10	1693967.68	MH 1-2
52003	1681487.45	1694317.13	MH 1-3
52004	1681622.87	1693897.24	MH 2-1
52005	1681718.70	1693809.80	MH 2-2
52006	1681868.34	1693769.67	MH 2-3
52007	1681624.77	1694044.77	MH 3-1
52008	1681728.38	1694314.68	MH 3-2
52009	1681891.24	1693866.65	MH 4-1
52010	1681979.93	1694056.52	MH 4-2
52011	1682099.84	1694313.21	MH 4-3
52012	1681955.78	1693221.68	MH 5-0
52013	1682020.99	1693498.14	MH 5-1
52014	1682383.07	1693424.30	MH 5-2
52015	1682431.46	1693354.39	MH 5-3
52016	1682491.47	1693328.28	MH 5-4
52017	1681461.93	1694013.31	Riser
52018	1681489.02	1694097.62	Riser
52019	1681476.35	1694184.93	Riser
52020	1681483.06	1694264.77	Riser
52021	1681623.82	1693971.00	Riser
52022	1681648.90	1694107.64	Riser
52023	1681685.47	1694202.90	Riser
52024	1681713.70	1694276.45	Riser
52025	1681787.71	1693791.29	Riser
52026	1681901.64	1693888.90	Riser
52027	1681942.88	1693977.19	Riser
52028	1682014.82	1694131.21	Riser
52029	1682050.80	1694208.22	Riser



PLOTTED: Friday, December 21, 2007 10:09AM

J:\CIVIL\04429\DWG\SAN\PHASE 2\BUBBLE.DWG