

**WATER DISTRIBUTION SYSTEM
COUNTRY HOLLOW ADDITION
PHASE 2**

**BUBBLE
MAP**
SHEET TITLE
448-90157
PROJECT NUMBER

DESIGN BY
DFL
DRAWN BY
KKL
CHECKED BY
GJA

ISSUED
December 2007

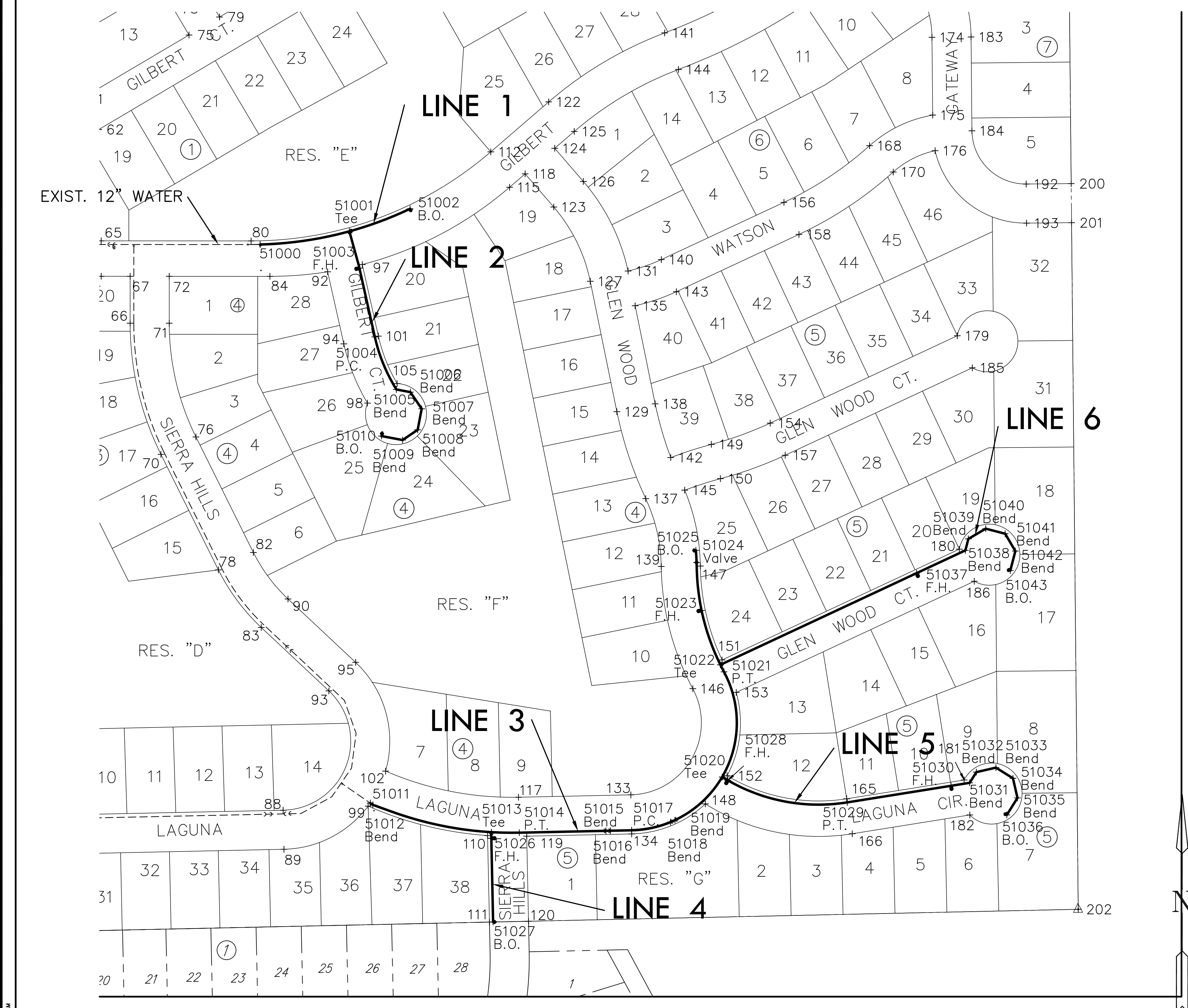
REVISED

SHEET NO.
9 of 16

Plat Points			
Point No.	Northing	Eastings	Description
1	1682642.37	1691847.82	PI
2	1682163.41	1691854.00	PI
4	1682062.42	1691855.31	PI
11	1682062.64	1691872.48	PI
16	1682445.77	1692014.38	PI
17	1682165.52	1692017.98	PI
18	1681735.66	1692018.78	PI
20	1681685.64	1692048.14	PI
21	1682092.01	1692050.34	PI
23	1682446.51	1692072.37	PI
25	1682166.43	1692075.97	PI
26	1681409.80	1692093.09	PI
27	1681359.84	1692122.54	PI
28	1682114.90	1692147.60	PI
31	1682240.76	1692337.40	PI
32	1682190.35	1692366.08	PI
33	1681949.95	1692382.07	PI
34	1682207.51	1692396.24	PI
35	1681592.99	1692403.87	PI
36	1681896.93	1692411.43	PI
37	1681543.03	1692433.32	PI
38	1682239.16	1692451.87	PI
39	1682061.72	1692479.20	PI
40	1681997.90	1692506.76	PI
41	1681624.60	1692512.87	PI
42	1681566.63	1692514.71	PI
43	1681941.14	1692518.68	PI
45	1681914.57	1692520.65	PI
46	1681625.14	1692529.86	PI
47	1681567.25	1692534.17	PI
48	1682352.99	1692534.64	PI
49	1682093.37	1692534.82	PI
50	1682302.58	1692563.32	PI
51	1681916.61	1692584.61	PI
52	1681598.19	1692594.75	PI
54	1682417.95	1692699.05	PI
56	1681493.65	1692705.00	PI
57	1681429.67	1692706.37	PI
58	1683396.99	1692713.21	PI
59	1682653.62	1692722.76	PI
60	1682428.86	1692756.02	PI
61	1682667.53	1692812.41	PI
62	1682617.60	1692841.92	PI
64	1682377.29	1692845.93	PI
65	1682435.29	1692845.95	PI
66	1682300.50	1692893.34	PI
67	1682377.27	1692893.37	PI
68	1683402.07	1692930.01	PI
70	1682085.69	1692943.76	PI
71	1682300.48	1692957.34	PI
72	1682377.25	1692957.37	PI
73	1682815.61	1692964.18	PI
75	1682772.34	1692989.76	PI
76	1682114.19	1693001.06	PI
77	1682845.12	1693014.12	PI
78	1681896.57	1693037.81	PI
79	1682801.84	1693039.69	PI
80	1682435.20	1693091.39	PI
82	1681925.07	1693095.11	PI
83	1681802.19	1693108.02	PI
84	1682377.18	1693122.13	PI
86	1682187.55	1693352.13	PI
88	1681503.01	1693143.83	PI
89	1681439.03	1693145.19	PI
90	1681848.88	1693151.79	PI
92	1682384.64	1693216.66	PI
93	1681698.43	1693218.70	PI
94	1682266.64	1693243.12	PI
95	1681745.12	1693262.47	PI
96	1682934.25	1693263.76	PI
97	1682396.51	1693273.44	PI
98	1682169.63	1693281.87	PI
99	1681509.70	1693282.95	PI
100	1682884.32	1693293.27	PI
101	1682279.33	1693299.71	PI
102	1681567.06	1693311.52	PI
105	1682201.58	1693330.35	PI
110	1681461.46	1693478.49	PI
111	1681319.83	1693481.51	PI
112	1682581.06	1693483.74	PI
113	1683212.19	1693493.52	PI
115	1682523.04	1693514.48	PI
117	1681524.23	1693529.07	PI
118	1682545.02	1693539.94	PI
119	1681460.51	1693542.52	PI
120	1681321.22	1693545.49	PI
122	1682662.87	1693578.50	PI
123	1682490.72	1693586.82	PI
124	1682586.85	1693588.38	PI
125	1682614.43	1693620.33	PI
126	1682532.55	1693635.26	PI
127	1682369.13	1693646.57	PI
129	1682155.61	1693690.11	PI
131	1682385.90	1693708.44	PI
133	1681528.16	1693713.03	PI
134	1681464.17	1693714.39	PI
135	1682329.07	1693720.05	PI
137	1682013.15	1693737.35	PI
138	1682168.40	1693752.82	PI

Plat Points			
Point No.	Northing	Eastings	Description
139	1681902.15	1693762.78	PI
140	1682404.61	1693762.97	PI
141	1682775.82	1693768.41	PI
142	1682080.46	1693778.29	PI
143	1682352.06	1693787.52	PI
144	1682715.94	1693791.01	PI
145	1682027.11	1693801.16	PI
146	1681702.08	1693814.40	PI
147	1681902.86	1693826.77	PI
148	1681513.36	1693834.99	PI
149	1682102.00	1693844.83	PI
150	1682045.91	1693859.60	PI
151	1681749.05	1693862.33	PI
152	1681559.56	1693870.60	PI
153	1681695.90	1693885.57	PI
154	1682136.84	1693941.12	PI
155	1683680.59	1693955.17	PI
156	1682498.34	1693963.63	PI
157	1682084.29	1693965.67	PI
158	1682445.79	1693988.18	PI
162	1682920.49	1694025.15	PI
164	1682870.14	1694064.66	PI
165	1681521.74	1694066.32	PI
166	1681464.47	1694075.49	PI
167	1682978.89	1694099.55	PI
168	1682591.14	1694103.82	PI
169	1682924.46	1694133.87	PI
170	1682548.01	1694142.61	PI
171	1682861.74	1694176.71	PI
172	1682961.15	1694186.31	PI
174	1682768.56	1694205.97	PI
175	1682641.23	1694207.16	PI
176	1682582.94	1694211.11	PI
177	1682897.84	1694229.56	PI
179	1682279.92	1694247.44	PI
180	1681930.46	1694250.70	PI
181	1681552.54	1694258.72	PI
182	1681495.27	1694267.89	PI
183	1682769.15	1694269.97	PI
184	1682615.51	1694271.40	PI
185	1682227.37	1694271.99	PI
186	1681877.91	1694275.25	PI
192	1682528.33	1694360.22	PI
193	1682464.34	1694360.81	PI
194	1683092.29	1694416.74	PI
195	1683028.30	1694418.10	PI
196	1683874.01	1694420.79	PI
198	1683092.54	1694428.38	PI
199	1683028.54	1694429.00	PI
200	1682529.02	1694433.85	PI
201	1682465.02	1694434.47	PI
202	1681340.76	1694445.39	PI

Water Distribution Points			
Point No.	Northing	Eastings	Description
51000	1682429.37	1693106.20	Tee
51001	1682450.88	1693252.26	Tee
51002	1682487.79	1693351.58	B.O.
51003	1682390.51	1693268.63	F.H.
51004	1682278.02	1693293.86	P.C.
51005	1682191.93	1693329.18	Bend
51006	1682187.55	1693352.13	Bend
51007	1682160.33	1693370.62	Bend
51008	1682125.90	1693364.05	Bend
51009	1682109.10	1693339.33	Bend
51010	1682115.68	1693304.90	B.O.
51011	1681514.67	1693286.55	Bend
51012	1681511.84	1693290.67	Bend
51013	1681467.07	1693484.84	Tee
51014	1681466.25	1693530.31	P.T.
51015	1681469.27	1693672.19	Bend
51016	1681469.43	1693679.65	Bend
51017	1681470.17	1693714.26	P.C.
51018	1681483.53	1693777.88	Bend
51019	1681486.79	1693785.28	Bend
51020	1681557.35	1693862.48	Tee
51021	1681729.58	1693865.47	P.T.
51022	1681741.11	1693859.51	Tee
51023	1681830.18	1693828.71	F.H.
51024	1681908.63	1693820.66	Valve
51025	1681928.59	1693819.46	B.O.
51026	1681457.03	1693484.58	F.H.
51027	1681319.96	1693487.51	B.O.
51028	1681551.93	1693871.73	F.H.
51029	1681515.82	1694067.27	P.T.
51030	1681543.01	1694237.11	F.H.
51031	1681547.90	1694267.64	Bend
51032	1681565.39	1694278.61	Bend
51033	1681572.75	1694310.68	Bend
51034	1681555.27	1694338.57	Bend
51035	1681523.19	1694345.92	Bend
51036	1681495.30	1694328.44	B.O.
51037	1681891.17	1694180.76	F.H.
51038	1681928.50	1694260.67	Bend
51039	1681947.35	1694265.57	Bend
51040	1681964.02	1694293.95	Bend
51041	1681955.73	1694325.80	Bend
51042	1681927.35	1694342.47	Bend
51043	1681895.50	1694334.18	B.O.



SCALE: 1" = 100'