

NW. Cor., NW 1/4, Sec. 26  
T27S, R2E, 6TH P.M.  
Set 5/8" Rebar w/ MKEC CLS 39 id cap  
Fnd. 5/8" bar 0.86' W. of corner

KELLOGG ST/US 54  
N88°43'30"E 2649.14'(M)

NE. Cor., NW 1/4, Sec. 26  
T27S, R2E, 6TH P.M.  
Fnd. 5/8" Rebar w/o id cap  
in thimble

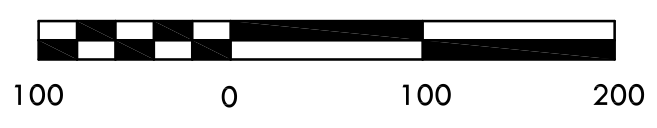
K-DOT R/W CONDEMNATION CASE NO. A-54089

K-DOT R/W CONDEMNATION CASE  
NO. 91-C-879  
Dated: May 20th, 1991

MINIMUM PAD ELEVATIONS (LOWEST OPENINGS)			
LOTS	BLOCK	ELEVATION	
		(CITY DATUM)	(NGVD)
6	1	156.6	1344.0
7	1	156.6	1344.0
8	1	156.6	1344.0
9	1	156.6	1344.0
10	1	156.6	1344.0
11	1	151.6	1339.0
12	1	156.6	1344.0
13	1	151.6	1339.0
14	1	151.6	1339.0
15	1	151.6	1339.0
16	1	151.6	1339.0
17	1	151.6	1339.0
18	1	148.4	1335.8
19	1	148.4	1335.8
20	1	148.4	1335.8
21	1	148.4	1335.8
22	1	148.4	1335.8
23	1	148.4	1335.8
24	1	148.4	1335.8
25	1	148.4	1335.8
37	1	151.6	1339.0

**BENCH MARKS**

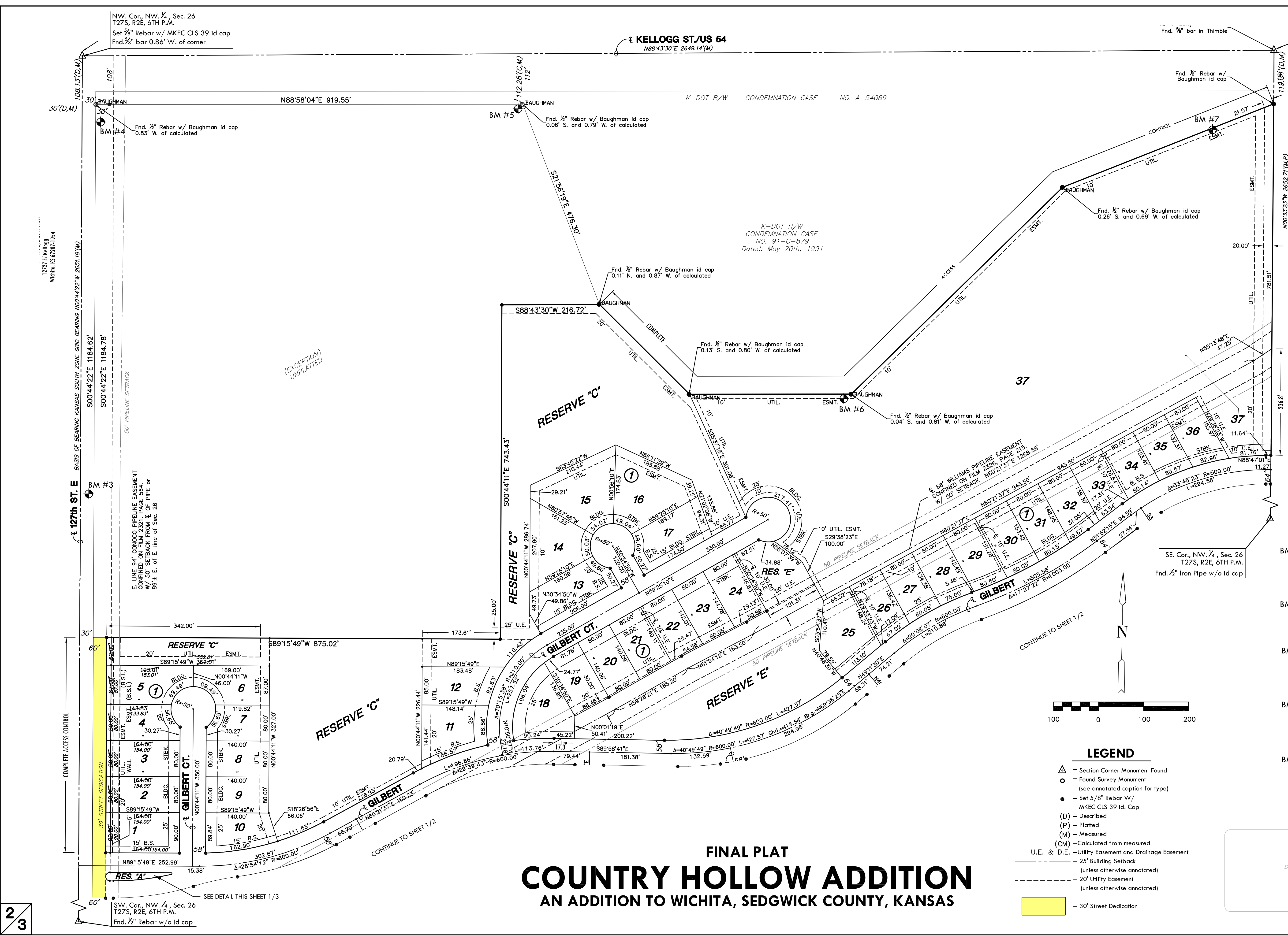
- BM #3 Railroad spike in Southwest face of power 4th pole South of Kellogg on East Side of 127th Street East, 973' South and 24' East of Northwest Corner Sec. 26, T 27 S, R 2 E.  
Elev. = 1353.93 (NGVD)
- BM #4 Fence T-post at Northwest corner of property, 40' East of centerline 127th And 10' South of the South Kellogg right of way.  
Elev. = 1360.81 (NGVD)
- BM #5 Fence T-post 10' South and 10' West of highway right of way corner, West side K-96 interchange and South side Kellogg, 969' East and 122' South of Northwest corner Sec. 26, T 27 S, R 2 E.  
Elev. = 1346.25 (NGVD)
- BM #6 Fence T-post 10' South and 10' West of highway right of way corner, East Side of K-96 interchange and South side of Kellogg, 1696' East and 770' South of the Northwest corner Sec. 26, T 27 S, R 2 E.  
Elev. = 1342.08 (NGVD)
- BM #7 Fence T-post 4' South of South Kellogg right of way fence, 145' West-Southwest of the Northeast property corner, 135' West and 176' South of the North Quarter corner of Sec. 26, T 27 S, R 2 E.  
Elev. = 1326.40 (NGVD)



**LEGEND**

- △ = Section Corner Monument Found
- = Found Survey Monument (see annotated caption for type)
- = Set 5/8" Rebar W/ MKEC CLS 39 id. Cap
- (D) = Described
- (P) = Platted
- (M) = Measured
- (CM) = Calculated from measured
- U.E. & D.E. = Utility Easement and Drainage Easement
- - - = 25' Building Setback (unless otherwise annotated)
- - - - - = 20' Utility Easement (unless otherwise annotated)
- = 30' Street Dedication

**FINAL PLAT**  
**COUNTRY HOLLOW ADDITION**  
AN ADDITION TO WICHITA, SEDGWICK COUNTY, KANSAS



2/3

DOCUMENT NO.

J:\Gis\04428.dwg Prop\04428.dwg 10/11/2005 10:51:57 AM CST