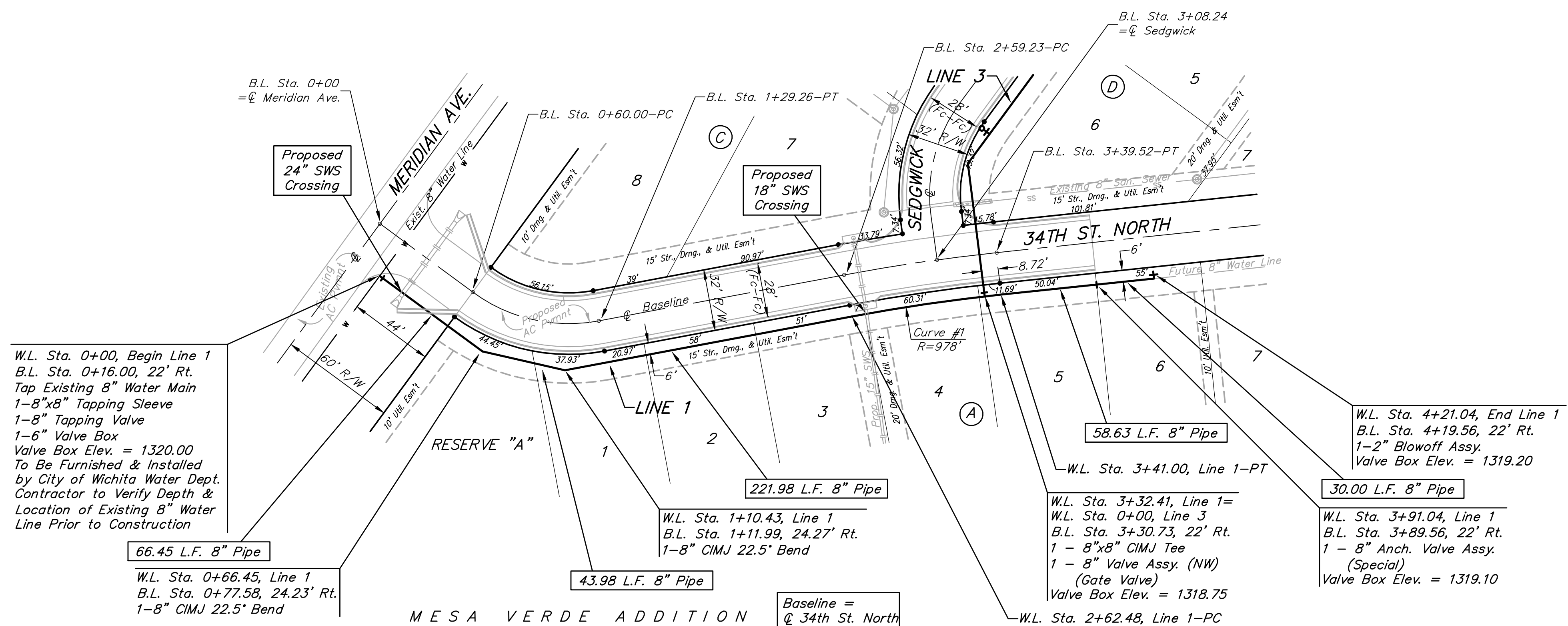


BENCHMARKS:
 BM # 1 - City of Wichita Disc in the Northwest Corner of 37th Street North and Womer Elev. = 1324.06 MSL
 BM # 2 - "Cut on the Top of Curb in the NE Corner of the Parking Lot for The Word of Life Church at 37th Street North & Meridian. Elev. = 1323.11 MSL
 BM # 3 - RR Spike in the East Face of Light Pole at the Southwest Corner of 34th Street North & Meridian. Elev. = 1320.32 MSL

MESA VERDE ADDITION



SCALE:
 1" = 40' HORIZONTAL
 1" = 5' VERTICAL
 • = IRON

W.L. Sta. 0+00, Begin Line 1
 B.L. Sta. 0+16.00, 22' Rt.
 Tap Existing 8" Water Main
 1-8"x8" Tapping Sleeve
 1-8" Tapping Valve
 1-6" Valve Box
 Valve Box Elev. = 1320.00
 To Be Furnished & Installed by City of Wichita Water Dept. Contractor to Verify Depth & Location of Existing 8" Water Line Prior to Construction

W.L. Sta. 0+66.45, Line 1
 B.L. Sta. 0+77.58, 24.23' Rt.
 1-8" CIMJ 22.5' Bend

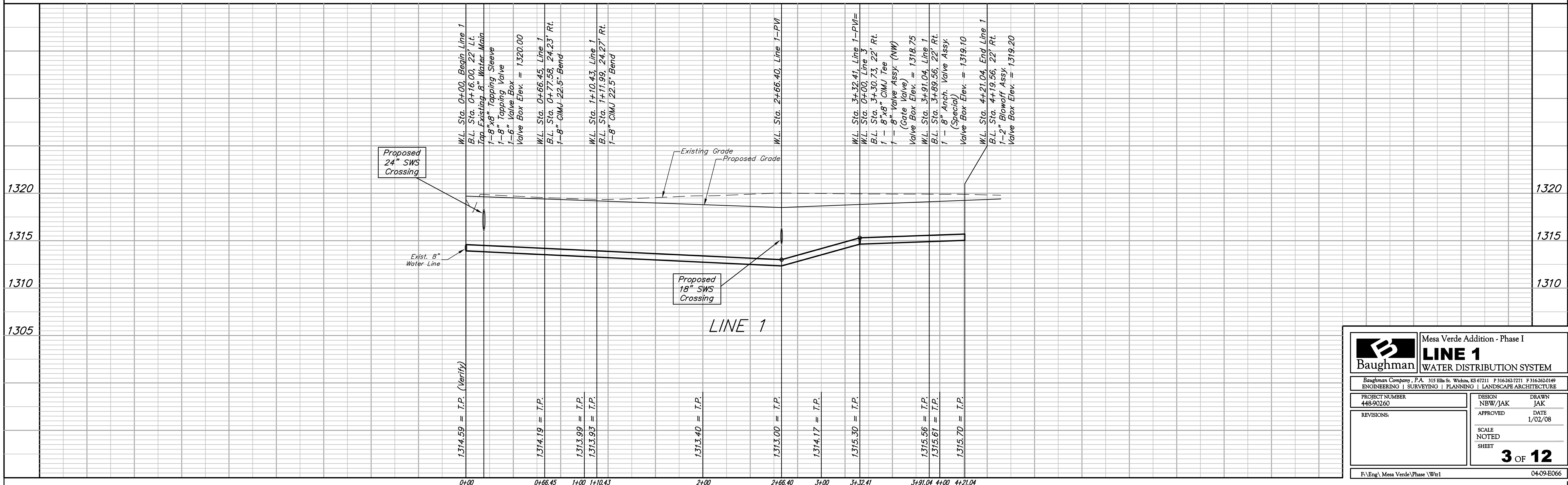
W.L. Sta. 1+10.43, Line 1
 B.L. Sta. 1+11.99, 24.27' Rt.
 1-8" CIMJ 22.5' Bend

W.L. Sta. 3+32.41, Line 1 =
 W.L. Sta. 0+00, Line 3
 B.L. Sta. 3+30.73, 22' Rt.
 1 - 8"x8" CIMJ Tee
 1 - 8" Valve Assy. (NW)
 (Gate Valve)
 Valve Box Elev. = 1318.75

W.L. Sta. 4+21.04, End Line 1
 B.L. Sta. 4+19.56, 22' Rt.
 1-2" Blowoff Assy.
 Valve Box Elev. = 1319.20

Curve #1
 Curve Data Based on Centerline of Pipe
 Rad. = 978' Delta = 4' 36' 00" Tangent = 39.28'
 Arc = 78.52' L.C. = 78.50' Def/Ft. = 1.75751 Min.

Station	Arc	CHORD		
		6" Rt.	Defl.	T. Defl.
2+62.48	-	-	0'00'00"	0'00'00"
2+75.00	12.52'	12.44'	0'22'00"	0'22'00"
3+00.00	25.00'	24.85'	0'43'57"	1'05'57"
3+25.00	25.00'	24.85'	0'43'56"	1'49'53"
3+41.00	16.00'	15.90'	0'28'07"	2'18'00"



Baughman Mesa Verde Addition - Phase I
LINE 1
 WATER DISTRIBUTION SYSTEM

Baughman Company, P.A. 315 Ellis St. Wichita, KS 67211 P 316-262-7271 F 316-262-0149
 ENGINEERING | SURVEYING | PLANNING | LANDSCAPE ARCHITECTURE

PROJECT NUMBER: 448-90260
 DESIGN: NBW/JAK
 DRAWN: JAK
 APPROVED: DATE: 1/02/08

REVISIONS:

SCALE: NOTED
 SHEET: **3 OF 12**

F:\Eng\Mesa Verde\Phase I\W1 04-09-EO66