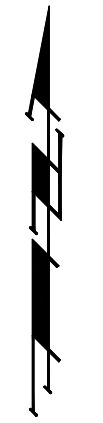
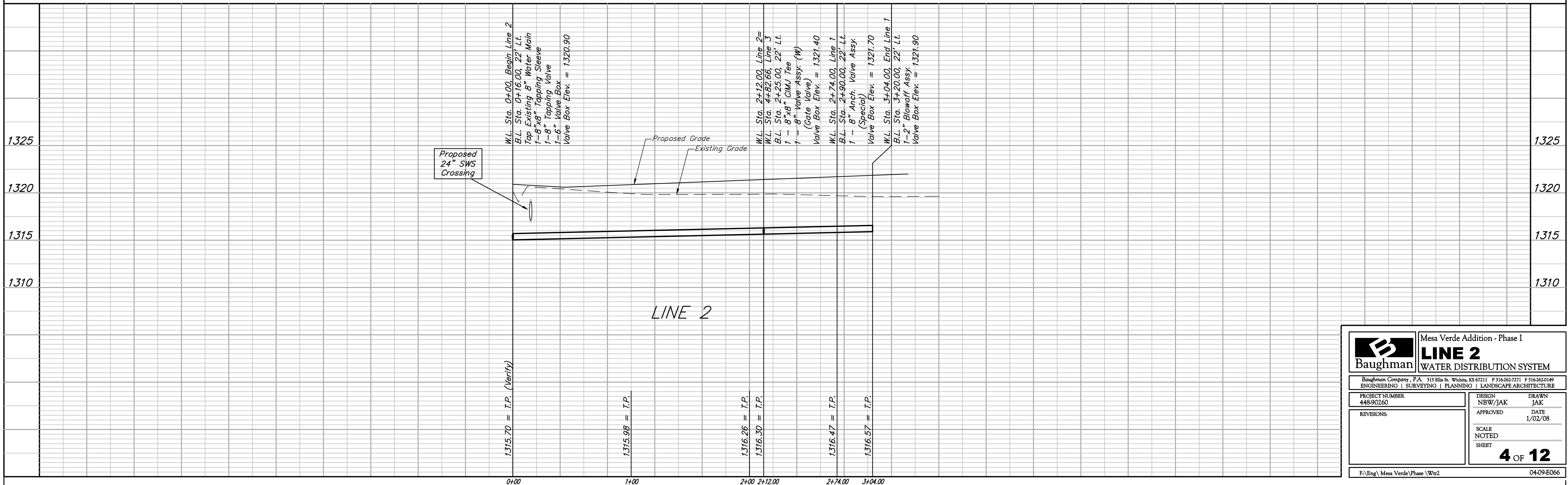
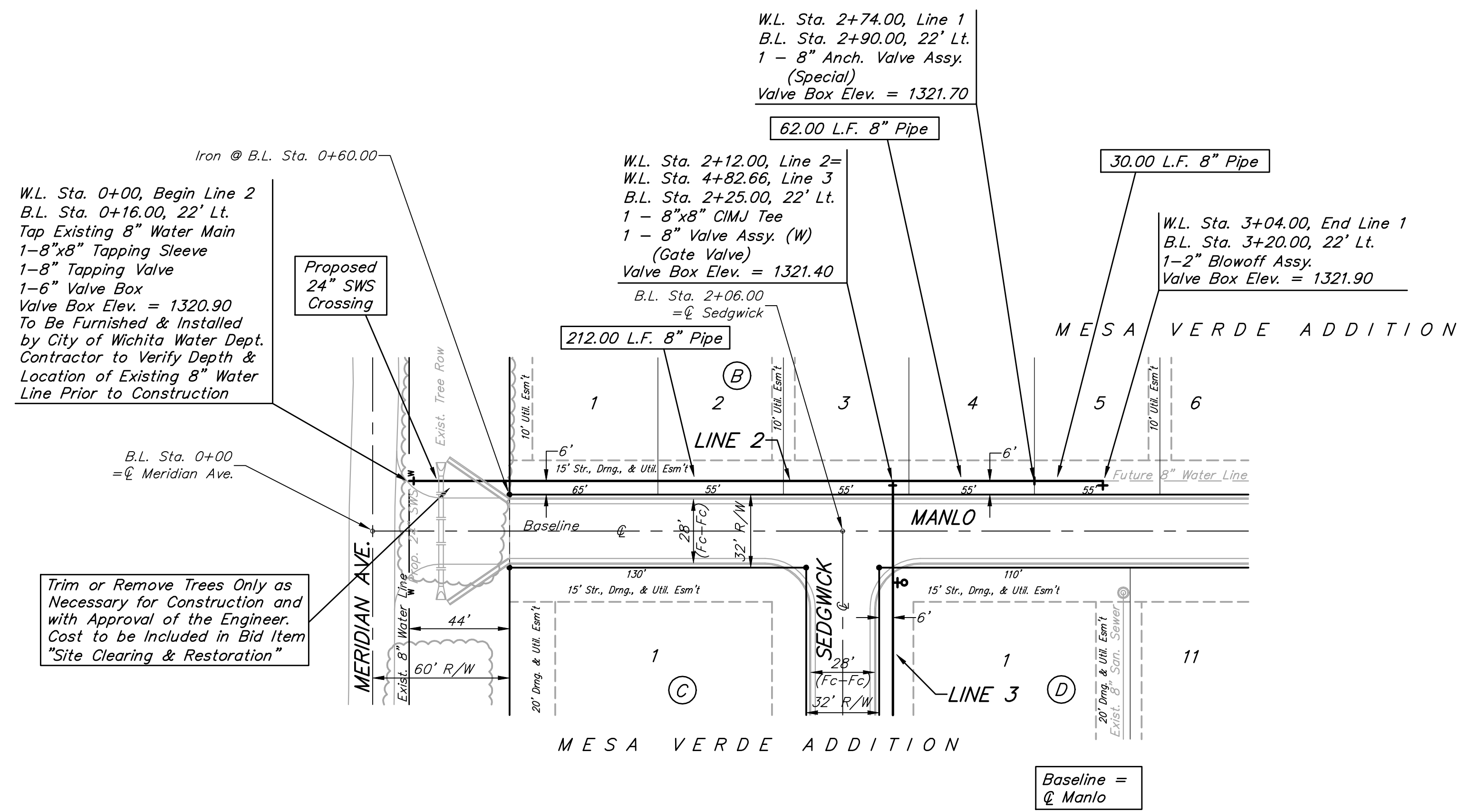


BENCHMARKS:
 BM # 1 - City of Wichita Disc in the Northwest Corner of 37th Street North and Womer Elev. = 1324.06 MSL
 BM # 2 - "C" Cut on the Top of Curb in the NE Corner of the Parking Lot for The Word of Life Church at 37th Street North & Meridian. Elev. = 1323.11 MSL
 BM # 3 - RR Spike in the East Face of Light Pole at the Southwest Corner of 34th Street North & Meridian. Elev. = 1320.32 MSL



SCALE:
 1" = 40' HORIZONTAL
 1" = 5' VERTICAL
 • = IRON



| | | | |
|--|-------------------|---|--|
| | | Mesa Verde Addition - Phase I | |
| | | LINE 2 | |
| Baughman Company, P.A. 315 Ellis St. Wichita, KS 67211 F 316-262-7271 F 316-262-0149 | | ENGINEERING SURVEYING PLANNING LANDSCAPE ARCHITECTURE | |
| PROJECT NUMBER 448-90260 | DESIGN NBW/JAK | DRAWN JAK | |
| REVISIONS: | APPROVED | DATE 1/02/08 | |
| | SCALE NOTED | | |
| | SHEET | 4 OF 12 | |
| F:\Eng\Mesa Verde\Phase I\Wz2 | | 04-09-E066 | |