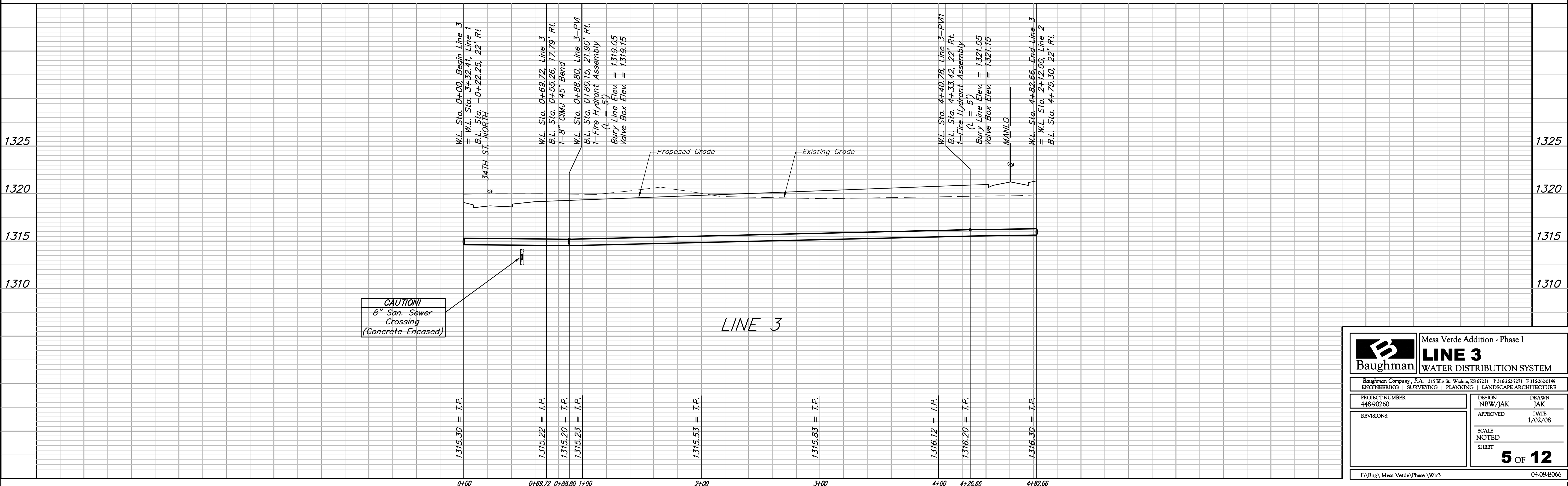
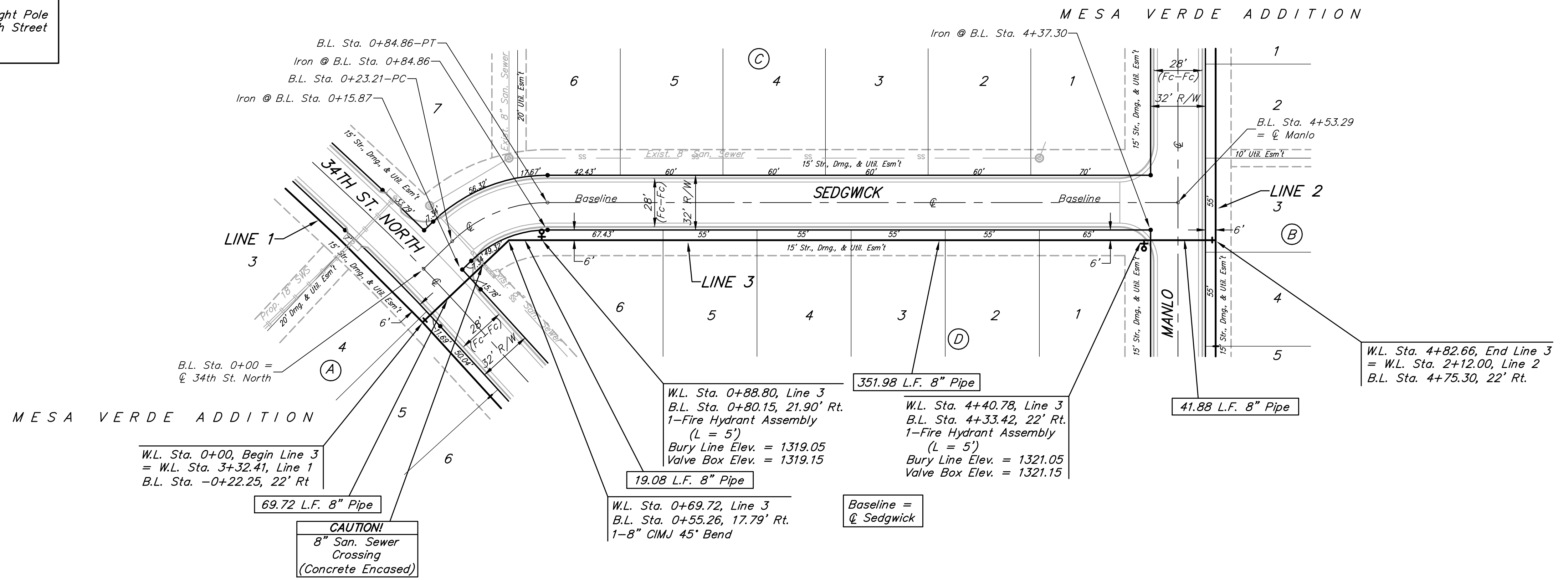


BENCHMARKS:
 BM # 1 - City of Wichita Disc in the Northwest Corner of 37th Street North and Womer Elev. = 1324.06 MSL
 BM # 2 - "C" Cut on the Top of Curb in the NE Corner of the Parking Lot for The Word of Life Church at 37th Street North & Meridian. Elev. = 1323.11 MSL
 BM # 3 - RR Spike in the East Face of Light Pole at the Southwest Corner of 34th Street North & Meridian. Elev. = 1320.32 MSL

SCALE:
 1" = 40' HORIZONTAL
 1" = 5' VERTICAL
 • = IRON



Baughman		Mesa Verde Addition - Phase I	
LINE 3		WATER DISTRIBUTION SYSTEM	
Baughman Company, P.A. 315 Ellis St. Wichita, KS 67211 P 316-262-7271 F 316-262-0149 ENGINEERING SURVEYING PLANNING LANDSCAPE ARCHITECTURE			
PROJECT NUMBER 448-90260	DESIGN NBW/JAK	DRAWN JAK	
REVISIONS:	APPROVED	DATE 1/02/08	
SCALE NOTED		SHEET 5 OF 12	
F:\Eng\Mesa Verde\Phase I\W3		04-09-E066	