

# MESA VERDE ADDITION

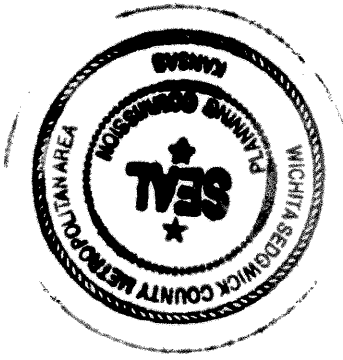
## WICHITA, SEDGWICK COUNTY, KANSAS

State of Kansas) SS We, Baughman Company, P.A., Surveyors in  
Sedgwick County) Sedgwick County do hereby certify that we have surveyed and  
platted "MESA VERDE ADDITION", Wichita, Sedgwick County, Kansas and  
that the accompanying plat is a true and correct exhibit of the  
property surveyed, described as part of the NW1/4 of Sec. 31, Twp.  
26-S, R-1-E of the 6th P.M., Sedgwick County, Kansas, further  
described as follows: Beginning at a point 1546.50 feet south and 30  
feet east of the NW corner of said NW1/4; thence south along the east  
right-of-way of Meridian Avenue, having an assumed bearing of  
S00°00'00"E, a distance of 1033.26 feet to a point on the northwesterly  
right-of-way of the Chisholm Creek Diversion as acquired in  
Condemnation Case No. A-39338; thence northeasterly along the  
northwesterly right-of-way of said Chisholm Creek Diversion, being a  
00°55.27' curve to the right, having a central angle of 09°16'48" and a  
radius of 6219.91 feet, an arc distance of 1007.43 feet, (having a long  
chord distance of 1006.32 feet bearing N45°39'27"E); thence  
N37°37'08"W, a distance of 411.34 feet; thence N89°45'24"W, a distance  
of 468.84 feet to the point of beginning.

Existing public easements and dedications  
being vacated by virtue of K.S.A. 12-512(b).  
Baughman Company, P.A.

Michael D. Conroy, 12-6-2006, Surveyor  
Michael G. Conroy

This plat of "MESA VERDE ADDITION",  
Wichita, Sedgwick County, Kansas has been submitted to and approved  
by the Wichita-Sedgwick County Metropolitan Area Planning Commission,  
Wichita, Kansas.  
Dated this 7th day of September, 2004.  
Wichita-Sedgwick County Metropolitan Area Planning Commission



Ronald L. Marnell, Chair  
John L. Schlegel, Secretary

This plat approved and all dedications  
shown hereon accepted by the City Council of the City of Wichita,  
Kansas, this 10 day of June, 2007



Carlos Magana, Mayor  
Karen Sublett, City Clerk

Reviewed in accordance with K.S.A. 58-2005  
on this 12th day of October, 2006.



Tricia L. Robello, L.S. #1246  
Deputy County Surveyor  
Sedgwick County, Kansas

Entered on transfer record this 10th day  
of April, 2007.



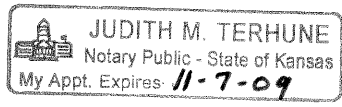
Don Brace, County Clerk

Know all men by these presents that we,  
the undersigned, have caused the land in the surveyors certificate to be  
platted into Lots, Blocks, Streets, and a Reserve to be known as "MESA  
VERDE ADDITION", Wichita, Sedgwick County, Kansas. The utility easements  
are hereby granted as indicated for the construction and maintenance of  
all public utilities. The drainage and utility easements are hereby granted  
as indicated for drainage purposes and for the construction and  
maintenance of all public utilities. The drainage easements are hereby  
granted as indicated for drainage purposes. The street, drainage, and  
utility easements are hereby granted as indicated for street purposes, for  
drainage purposes, and for the construction and maintenance of all public  
utilities. The streets are hereby dedicated to and for the use of the  
public. Reserve "A" shall hereby reserved for clubhouse and clubhouse  
related facilities, recreational areas, open space, landscaping, drainage  
purposes, and utilities as confined to easements. Reserve "A" shall be  
owned and maintained by the homeowners association for the addition.  
The Minimum Building Pad Elevations shall be as indicated on the face of  
the plat.

Community Economic Resource Corporation,  
a Kansas Non-Profit corporation

Richard E. Lopez, Chief Executive Officer

State of Kansas) SS The foregoing instrument acknowledged before  
me, this 7th day of DECEMBER, 2006, by Richard E. Lopez,  
Chief Executive Officer of Community Economic Resource Corporation, a  
Kansas Non-Profit corporation, on behalf of the corporation.



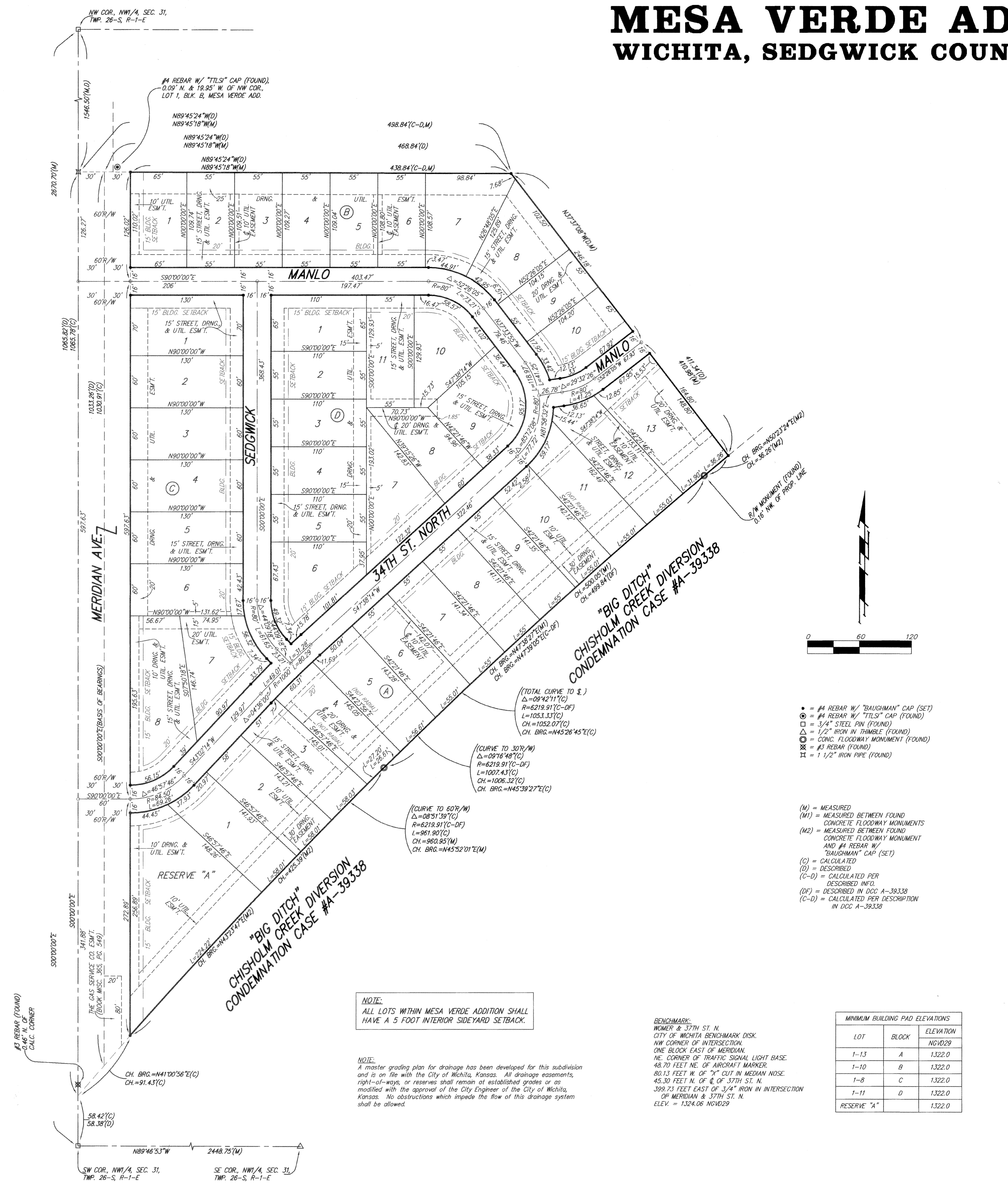
Judith M. Terhune, Notary Public

My App't. Exp. 11-7-09

State of Kansas) SS This is to certify that this plat has been  
filed for record in the office of the Register of Deeds, this 10th day  
of April, 2007 at 3:02:00 P.M.; and is duly recorded.

Bill Meek, Register of Deeds

Tonya Buckingham, Deputy



NOTE:  
ALL LOTS WITHIN MESA VERDE ADDITION SHALL  
HAVE A 5 FOOT INTERIOR SIDEWAY SETBACK.

NOTE:  
A master grading plan for drainage has been developed for this subdivision  
and is on file with the City of Wichita, Kansas. All drainage easements,  
right-of-ways, or reserves shall remain at established grades or as  
modified with the approval of the City Engineer of the City of Wichita,  
Kansas. No obstructions which impede the flow of this drainage system  
shall be allowed.

BENCHMARK:  
WOMER & 37TH ST. N.  
CITY OF WICHITA BENCHMARK DISK  
NW CORNER OF INTERSECTION  
ONE BLOCK EAST OF MERIDIAN  
NE CORNER OF TRAFFIC SIGNAL LIGHT BASE  
48.70 FEET NE. OF AIRCRAFT MARKER  
80.13 FEET N. OF "X" CUT IN MEDIAN NOSE  
45.30 FEET N. OF E. OF 37TH ST. N.  
399.73 FEET EAST OF 3/4" IRON IN INTERSECTION  
OF MERIDIAN & 37TH ST. N.  
ELEV. = 1324.06 NOV029