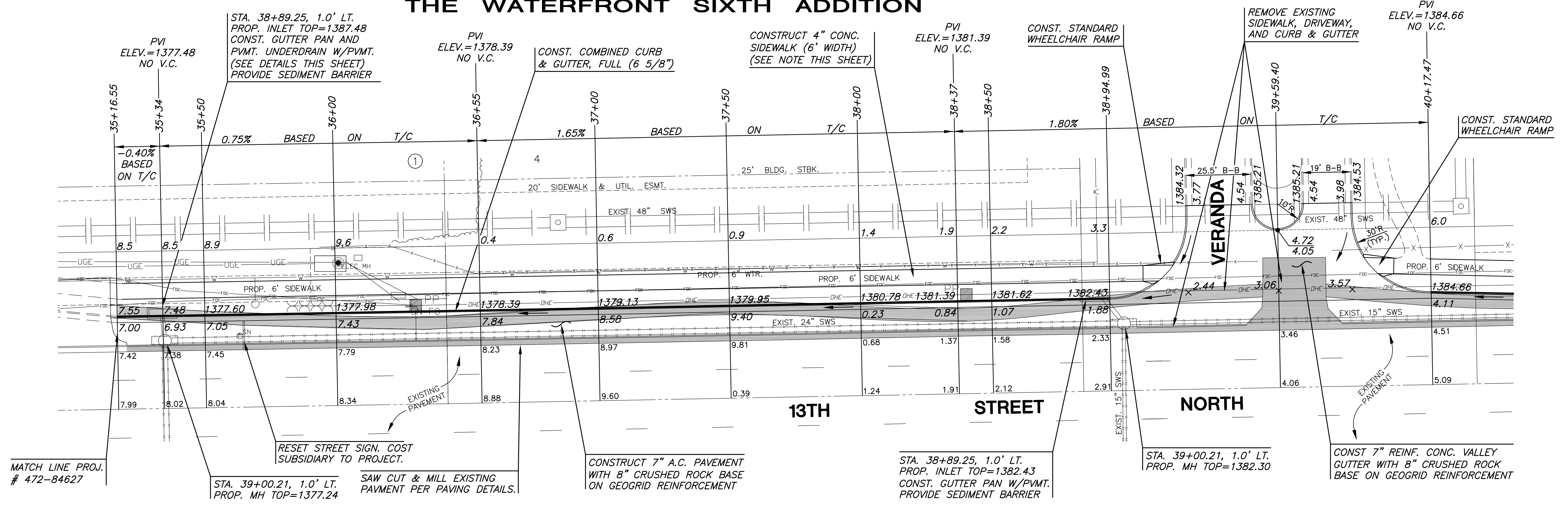
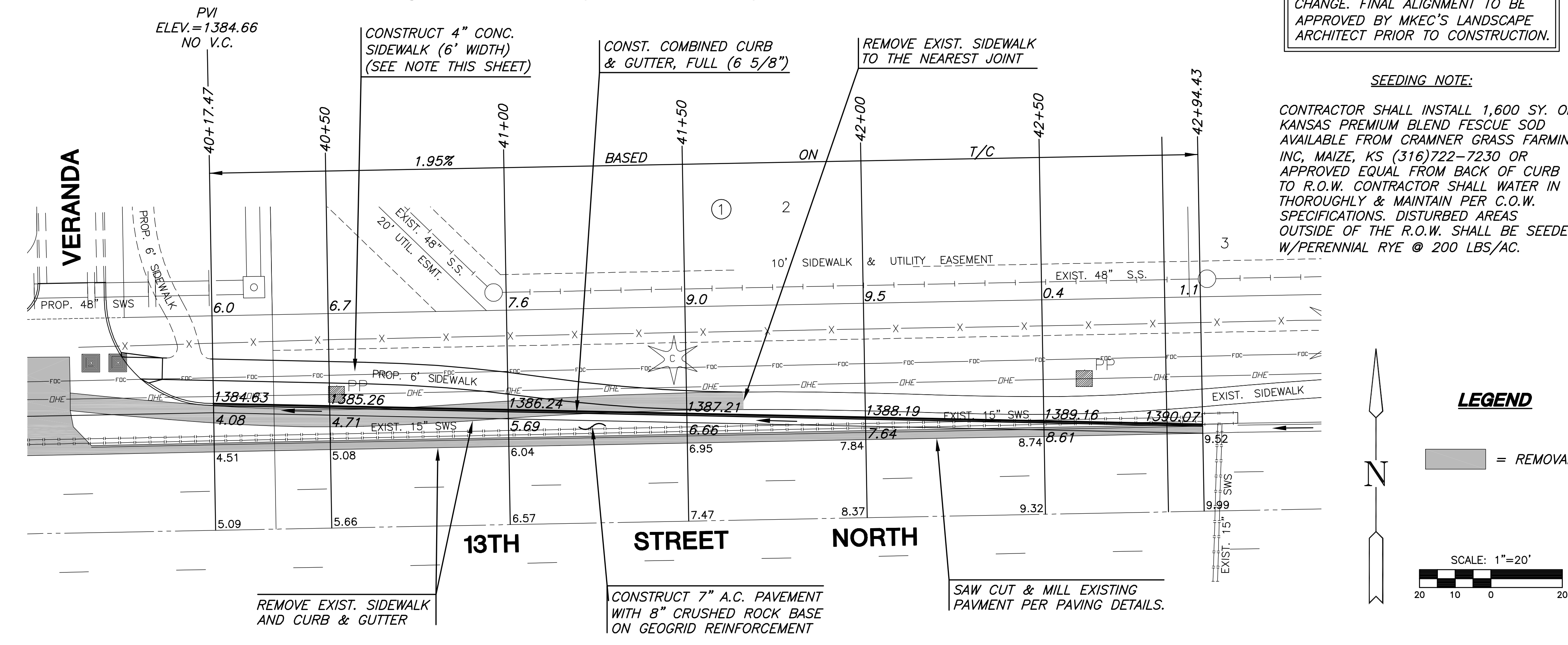


**THE WATERFRONT SIXTH ADDITION**



**THE GREENWICH OFFICE PARK ADDITION**

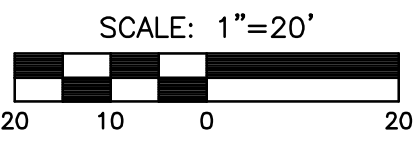


**NOTE:**  
SIDEWALK ALIGNMENT SUBJECT TO CHANGE. FINAL ALIGNMENT TO BE APPROVED BY MKEC'S LANDSCAPE ARCHITECT PRIOR TO CONSTRUCTION.

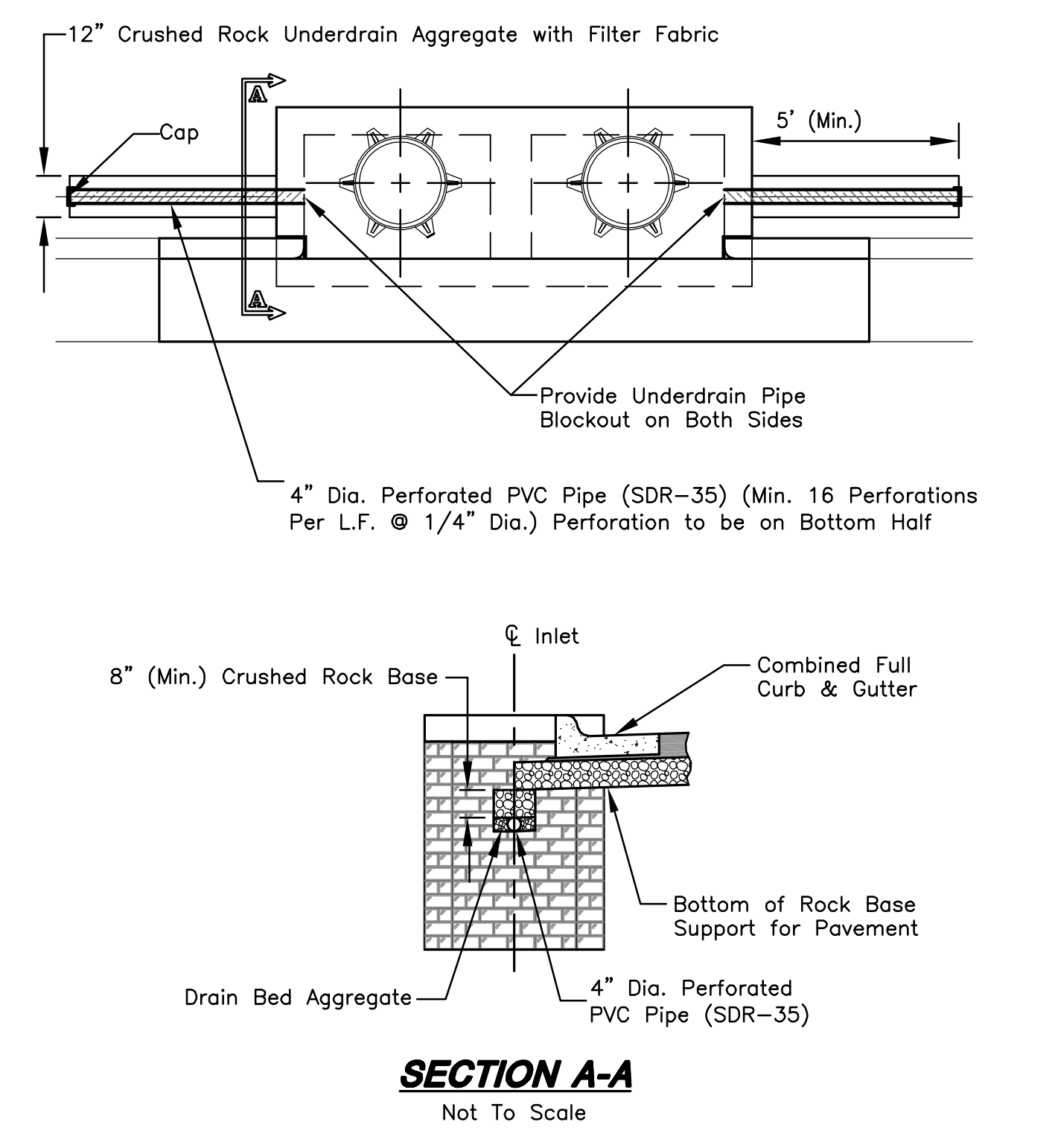
**SEEDING NOTE:**  
CONTRACTOR SHALL INSTALL 1,600 SY. OF KANSAS PREMIUM BLEND FESCUE SOD AVAILABLE FROM CRAMNER GRASS FARMING INC, MAIZE, KS (316)722-7230 OR APPROVED EQUAL FROM BACK OF CURB TO R.O.W. CONTRACTOR SHALL WATER IN THOROUGHLY & MAINTAIN PER C.O.W. SPECIFICATIONS. DISTURBED AREAS OUTSIDE OF THE R.O.W. SHALL BE SEEDED W/PERENNIAL RYE @ 200 LBS/AC.

**LEGEND**

█ = REMOVAL



**PAVEMENT UNDERDRAIN DETAILS**  
Cost of Underdrain is Subsidiary to Inlets



**PAVING PLAN**  
SHEET TITLE  
472-84645  
PROJECT NUMBER

DESIGN BY: DFL  
DRAWN BY: DMU  
CHECKED BY: GJA

ISSUED: January 2008  
REVISED:

SHEET NO.  
5 of 24

PLOT: 1/16/08 10:22AM

J:\CH\106266\DWG\PAV\RESIDENTIAL\TURN LANES\06266\_E1.DWG