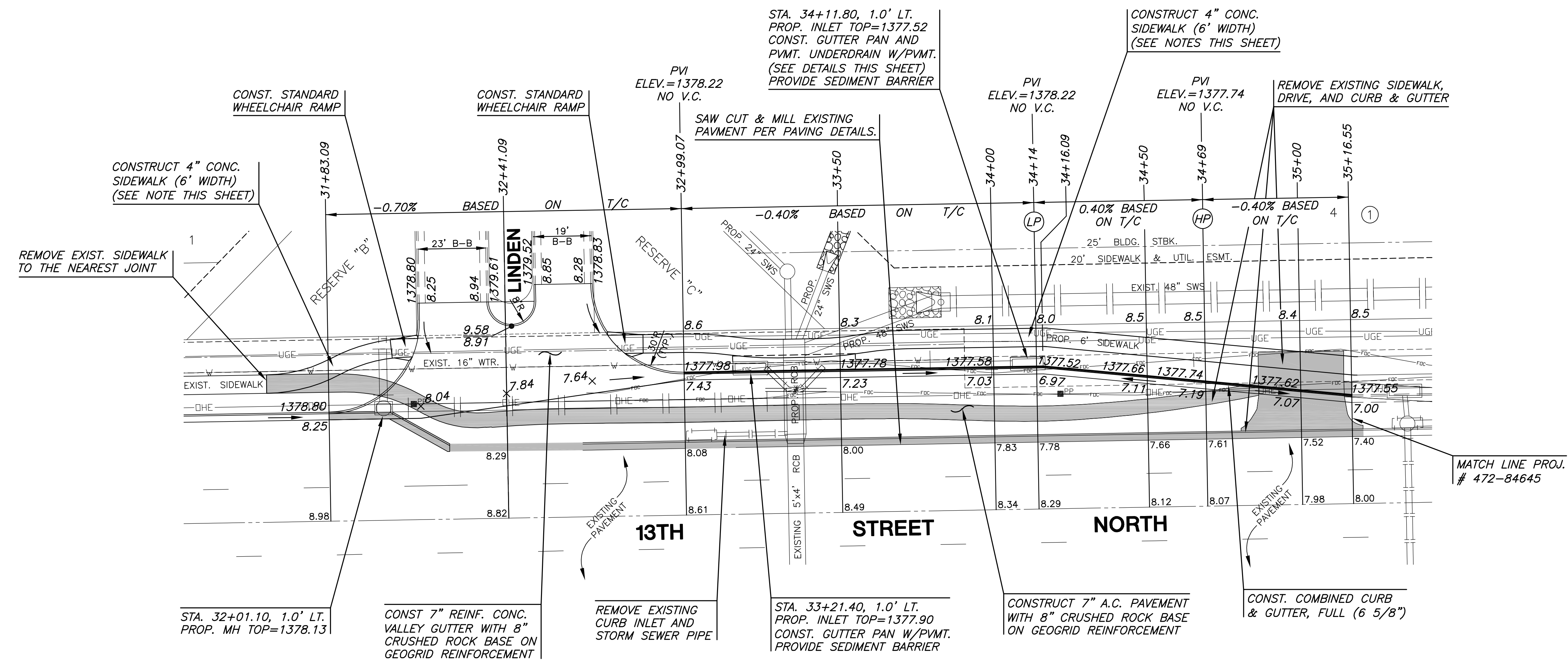


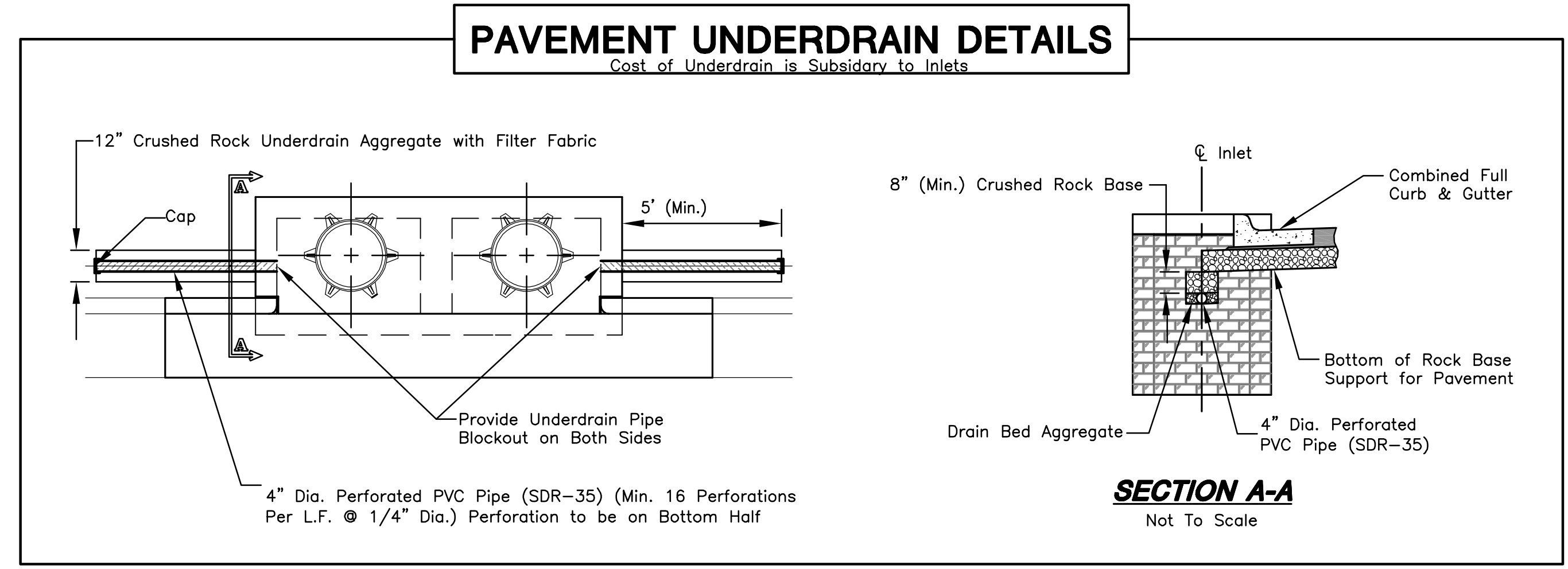
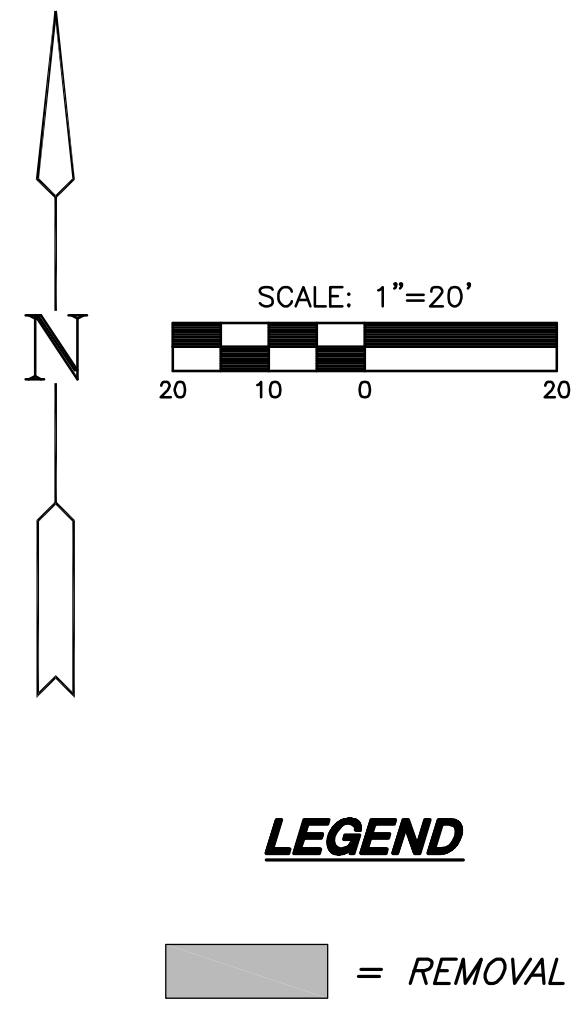
THE WATERFRONT SIXTH ADDITION



GRADING NOTE:
THE CONTRACTOR FOR GRADING AND DRAINAGE PHASE 1 (C.O.W. PROJ. #468-84409) WILL BE RESPONSIBLE FOR ESTABLISHING ROUGH GRADES IN AREA SURROUNDING THE PROPOSED RCB AND FUTURE SWS LINES. THE PAVING CONTRACTOR SHALL BE RESPONSIBLE FOR ANY FINE GRADING NEEDED TO GET SIDEWALK AND RIGHT-OF-WAY TO PROPOSED FINISH GRADE.

SEEDING NOTE:
CONTRACTOR SHALL INSTALL 310 SY. OF KANSAS PREMIUM BLEND FESCUE SOD AVAILABLE FROM CRAMNER GRASS FARMING INC, MAIZE, KS (316)722-7230 OR APPROVED EQUAL FROM BACK OF CURB TO R.O.W. CONTRACTOR SHALL WATER IN THOROUGHLY & MAINTAIN PER C.O.W. SPECIFICATIONS. DISTURBED AREAS OUTSIDE OF THE R.O.W. SHALL BE SEEDED W/PERENNIAL RYE @ 200 LBS/AC.

- SIDEWALK NOTES:**
- CONTRACTOR TO COORDINATE CONSTRUCTION OF 6' WALK BETWEEN STATIONS 33+25 & 33+75 WITH THE DRAINAGE CONTRACTOR TO ALLOW FOR THE PLACEMENT OF PROP. RCB AND STORM SEWER LINES PRIOR TO SIDEWALK COMPLETION.
 - SIDEWALK ALIGNMENT SUBJECT TO CHANGE. FINAL ALIGNMENT TO BE APPROVED BY MKEC'S LANDSCAPE ARCHITECT PRIOR TO CONSTRUCTION.



PAVING AND INCIDENTAL DRAINAGE PLANS FOR
THE WATERFRONT SIXTH ADDITION
13TH STREET LEFT TURN LANES

PAVING PLAN
SHEET TITLE
472-84627
PROJECT NUMBER

DESIGN BY: DFL
DRAWN BY: DMU
CHECKED BY: GJA

ISSUED: January 2008
REVISED:

SHEET NO.
5 of 24

PLOT: 01/16/08 10:31 AM

J:\CIVIL\06266\DWG\PAV\6TH_ADDITION\TURN_LANES\06266-LET.DWG