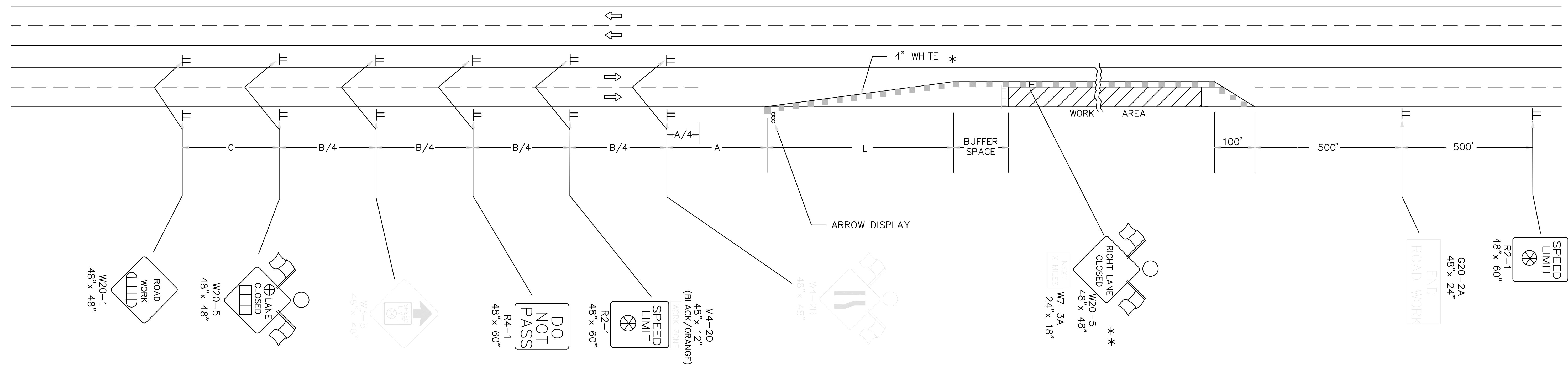


REFER TO STD. TE710 FOR ADDITIONAL INFORMATION ON TRAFFIC CONTROL SIGNS AND SIGN SPACING.
 REFER TO STD. TE702 FOR INFORMATION ON TAPERS AND CHANNELIZING DEVICES.
 REFER TO STD. TE700 FOR LENGTH OF BUFFER SPACE.

STATE	PROJECT NO.	YEAR	SHEET NO.	TOTAL SHEETS
KANSAS	COW #472-84627 OCA 766191	2007	15	24



LEFT-SIDE SIGNS SHALL BE OMITTED FOR A FOUR-LANE UNDIVIDED HIGHWAY.

* FOR LEFT LANE CLOSURES USE W4-2L AND YELLOW EDGE LINE ALONG CHANNELIZING DEVICES.

** THE W20-5 (RIGHT LANE CLOSED) AND W7-3A (NEXT X MILES) SIGNS SHOULD BE PLACED AT 2 MILE INCREMENTS ON A PROJECT OF 4 MILES OR LONGER.

- Channelizing Devices
- ||| Type III Barricades
- ⊞ AHEAD, 1500 FT Or 1 MILE
- ⊗ Speed To Be Determined By The Engineer
- ⊞ AHEAD, 1000 FT, 1500 FT Or ?MILE
- ⊕ RIGHT OR LEFT
- X Length To The Nearest Whole Mile
- TYPE "A" LIGHT

NO.	DATE	REVISIONS	BY	APP'D
3	2-1-05	CLARIFIED NOTES, UPDATED WARNING SIGNS	B.H.	A.A.A.
2	11-19-03	CHANGED BORDER	B.H.	S.A.B.
1	9-26-02	REMOVED G20-1 SIGNS, ADDED W20-5 AND W7-3A	M.H.	S.A.B.

KANSAS DEPARTMENT OF TRANSPORTATION
 TYPICAL TRAFFIC CONTROL
 FOUR-LANE HIGHWAY
 ONE LANE CLOSED

TE744	9/1/00
FHWA APPROVAL 2-1-2005	APP'D Anthony A. Alrobaire
DESIGNED B.A.H.	DETAILED B.A.H.
DESIGN CK.	DETAIL CK.
QUANTITIES	TRACED
QUAN. CK.	TRACE CK.