

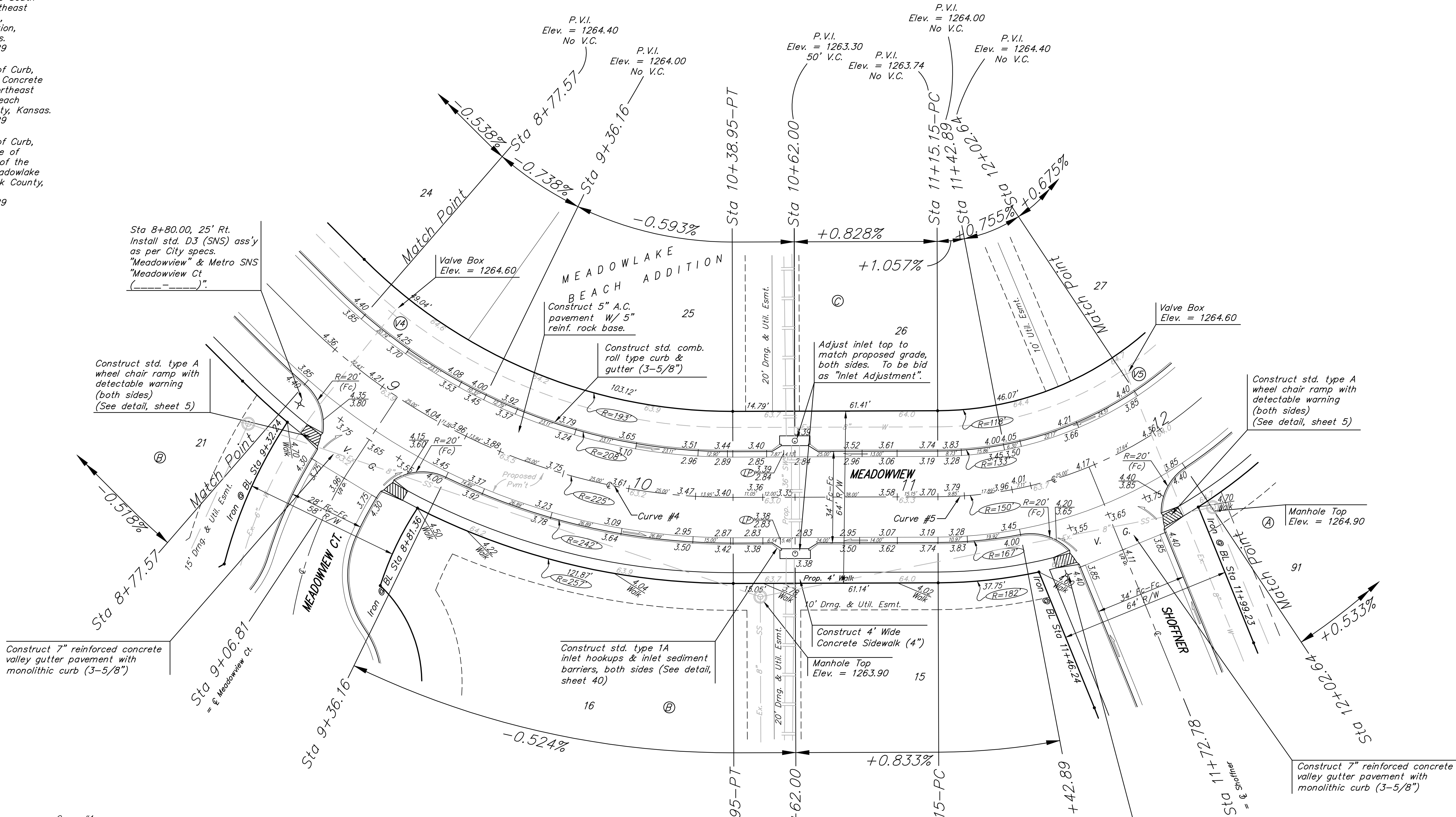
BM #1 - City of Wichita  
Benchmark Disc, SE Corner of  
Clifton and 55th Street South,  
Southwest corner of RCBC, on top  
of hubguard at the West end.  
ELEV. = 1263.29 NGVD29

BM #2 - "□" Cut on wall footing  
located 29' North of the South  
end of wall, at the Southeast  
corner of Lot 7 Block A,  
Meadowlake Beach Addition,  
Sedgwick County, Kansas.  
ELEV. = 1266.82 NGVD29

BM #3 - "□" Cut Top of Curb,  
West side South end of Concrete  
street North west of Northeast  
corner of Meadowlake Beach  
Addition, Sedgwick County, Kansas.  
ELEV. = 1262.86 NGVD29

BM #4 - "□" Cut Top of Curb,  
East return on East side of  
Concrete street North of the  
Northwest Corner of Meadowlake  
Beach Addition, Sedgwick County,  
Kansas.  
ELEV. = 1262.95 NGVD29

Scale: 1" = 20' Horizontal  
• = Iron



Sta 8+80.00, 25' Rt.  
Install std. D3 (SNS) ass'y  
as per City specs.  
"Meadowview" & Metro SNS  
"Meadowview Ct."  
-----

Construct std. type A  
wheel chair ramp with  
detectable warning  
(both sides)  
(See detail, sheet 5)

Construct std. type A  
wheel chair ramp with  
detectable warning  
(both sides)  
(See detail, sheet 5)

Construct 7" reinforced concrete  
valley gutter pavement with  
monolithic curb (3-5/8")

Construct std. type 1A  
inlet hookups & inlet sediment  
barriers, both sides (See detail,  
sheet 40)

Construct 7" reinforced concrete  
valley gutter pavement with  
monolithic curb (3-5/8")

Sta 11+54.00, 36' Rt.  
Install std. D3 (SNS) ass'y  
as per City specs.  
"Meadowview" & Metro SNS  
"Meadowview Ct."  
-----

Curve #4  
Curve Data Based on Centerline  
Rad. = 225' Delta = 45° 10' 15" Tangent = 93.59'  
Arc = 177.39' L.C. = 172.83' Def/Ft. = 7.63924 Min.

Station	Arc	FACE CHORD LENGTHS		Defl.	T. Defl.
		8' Lt.	8' Rt.		
8+61.56	-	-	-	0'00"00"	0'00"00"
8+75.00	13.44'	11.94'	14.93'	1'42"40"	1'42"40"
8+77.57	2.57'	2.28'	2.86'	0'19"38"	2'02"18"
9+06.81	29.24'	25.97'	32.47'	3'43"22"	5'45"40"
9+36.16	29.35'	26.07'	32.59'	3'44"12"	9'29"53"
9+50.00	13.84'	12.30'	15.37'	1'45"43"	11'15"37"
9+75.00	25.00'	22.21'	27.76'	3'10"59"	14'26"36"
10+00.00	25.00'	22.21'	27.76'	3'10"59"	17'37"34"
10+25.00	25.00'	22.21'	27.76'	3'10"59"	20'48"33"
10+38.95	13.95'	12.40'	15.50'	1'46"34"	22'35"07"

Curve #5  
Curve Data Based on Centerline  
Rad. = 150' Delta = 53° 12'02" Tangent = 75.12'  
Arc = 139.28' L.C. = 134.33' Def/Ft. = 11.45905 Min.

Station	Arc	FACE CHORD LENGTHS		Defl.	T. Defl.
		8' Lt.	8' Rt.		
11+15.15	-	-	-	0'00"00"	0'00"00"
11+25.00	9.85'	8.21'	11.49'	1'52"52"	1'52"52"
11+42.89	17.89'	14.90'	20.86'	3'25"00"	5'17"52"
11+72.79	29.90'	24.88'	34.83'	5'42"37"	11'00"30"
12+02.64	29.85'	24.83'	34.77'	5'42"03"	16'42"33"
12+25.00	22.36'	18.62'	26.06'	4'16"13"	20'58"46"
12+50.00	25.00'	20.81'	29.13'	4'46"28"	25'45"15"
12+54.43	4.43'	3.69'	5.17'	0'50"46"	26'36"01"

NOTE:  
ROLL TYPE CURB & GUTTER TO  
BE CONSTRUCTED ON THE  
PAVEMENT SHOWN ON THIS SHEET.  
TOP OF CURB ELEVATIONS ARE  
GIVEN FOR FULL HEIGHT CURB.

**Baughman** MEADOWLAKE BEACH ADD. - PH. I  
**MEADOWVIEW**  
STA 8+77.57 TO STA 12+02.64

Baughman Company, P.A. 315 Ellis St. Wichita, KS 67211 F3162627271 F3162620149  
ENGINEERING | SURVEYING | PLANNING | LANDSCAPE ARCHITECTURE

PROJECT NUMBER  
412-84540

DESIGN  
ATD

DRAWN  
TMS

APPROVED

DATE  
01/08

SCALE  
Noted

SHEET  
**8 OF 34**

MeadowlakeBeach/Str2 06-10-E679