

BM #1 - City of Wichita  
Benchmark Disc, SE Corner of  
Clifton and 55th Street South,  
Southwest corner of RCBC, on top  
of hubguard at the West end.  
ELEV. = 1263.29 NGVD29

BM #2 - "C" Cut on wall footing  
located 29' North of the South  
end of wall, at the Southeast  
corner of Lot 7 Block A,  
Meadowlake Beach Addition,  
Sedgwick County, Kansas.  
ELEV. = 1266.82 NGVD29

BM #3 - "C" Cut Top of Curb,  
West side South end of Concrete  
street North west of Northeast  
corner of Meadowlake Beach  
Addition, Sedgwick County, Kansas.  
ELEV. = 1262.86 NGVD29

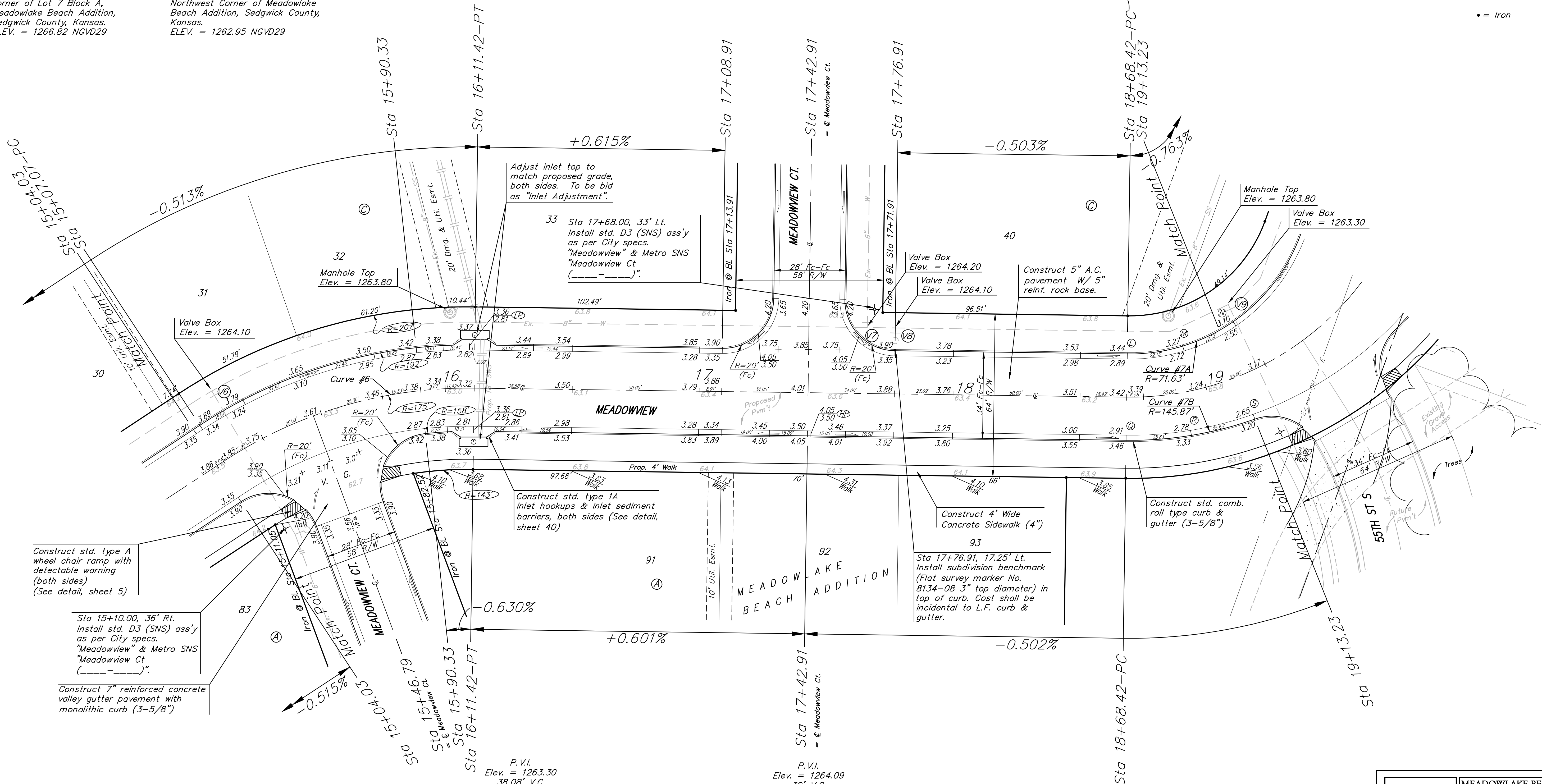
BM #4 - "C" Cut Top of Curb,  
East return on East side of  
Concrete street North of the  
Northwest Corner of Meadowlake  
Beach Addition, Sedgwick County,  
Kansas.  
ELEV. = 1262.95 NGVD29

P.V.I.  
Elev. = 1263.30  
46.28' V.C.

P.V.I.  
Elev. = 1263.44  
No V.C.

Scale: 1" = 20' Horizontal

• = Iron



Construct std. type A  
wheel chair ramp with  
detectable warning  
(both sides)  
(See detail, sheet 5)

Sta 15+10.00, 36' Rt.  
Install std. D3 (SNS) ass'y  
as per City specs.  
"Meadowview" & Metro SNS  
"Meadowview Ct"  
(-----)

Construct 7" reinforced concrete  
valley gutter pavement with  
monolithic curb (3-5/8")

Adjust inlet top to  
match proposed grade,  
both sides. To be bid  
as "Inlet Adjustment".  
  
33 Sta 17+68.00, 33' Lt.  
Install std. D3 (SNS) ass'y  
as per City specs.  
"Meadowview" & Metro SNS  
"Meadowview Ct"  
(-----)

Construct std. type 1A  
inlet hookups & inlet sediment  
barriers, both sides (See detail,  
sheet 40)

Construct 4' Wide  
Concrete Sidewalk (4")

93  
Sta 17+76.91, 17.25' Lt.  
Install subdivision benchmark  
(Flat survey marker No.  
8134-08 3" top diameter) in  
top of curb. Cost shall be  
incidental to L.F. curb &  
gutter.

Construct std. comb.  
roll type curb &  
gutter (3-5/8")

Curve #6  
Curve Data Based on Centerline  
Rad. = 175' Delta = 34'09" 53" Tangent = 53.78'  
Arc = 104.35' L.C. = 102.81' Def/Ft. = 9.82215 Min.

Station	Arc	FACE CHORD LENGTHS		Defl.	T. Defl.
		8' Lt.	8' Rt.		
15+07.07	-	-	-	0'00"00"	0'00"00"
15+46.79	39.72'	45.30'	33.97'	6'30"08"	6'30"08"
15+90.33	43.54'	49.63'	37.22'	7'07"39"	13'37'47"
16+00.00	9.67'	11.05'	8.29'	1'34"59"	15'2'46"
16+11.42	11.42'	13.05'	9.79'	1'52"10"	17'04"56"


Curve #7A  
Curve Data Based on Centerline  
Rad. = 71.63' Delta = 70' 48' 52" Tangent = 50.92'  
Arc = 88.52' L.C. = 83.00' Def/Ft. = 23.99947 Min.

Station	Arc	FACE CHORD LENGTHS		Defl.	T. Defl.
		8' Lt.	8' Rt.		
L	-	-	-	0'00"00"	0'00"00"
M	22.13'	19.58'	19.58'	8'51"06"	8'51"06"
N	22.13'	19.58'	19.58'	8'51"06"	17'42"13"
O	22.13'	19.58'	19.58'	8'51"06"	26'33"19"
P	22.13'	19.58'	19.58'	8'51"06"	35'24"26"

Curve #7B  
Curve Data Based on Centerline  
Rad. = 145.87' Delta = 70' 47' 36" Tangent = 103.65'  
Arc = 180.24' L.C. = 168.99' Def/Ft. = 11.78318 Min.

Station	Arc	FACE CHORD LENGTHS		Defl.	T. Defl.
		8' Lt.	8' Rt.		
O	-	-	-	0'00"00"	0'00"00"
R	25.83'	24.38'	27.21'	5'04"21"	5'04"21"
S	25.83'	24.38'	27.21'	5'04"21"	10'08"43"
T	32.88'	31.01'	34.61'	6'27"26"	16'36"09"
U	32.78'	30.92'	34.50'	6'26"15"	23'02"24"
V	32.34'	30.50'	34.04'	6'21"04"	29'23"28"
W	30.58'	28.85'	32.20'	6'00"20"	35'23"48"

NOTE:  
ROLL TYPE CURB & GUTTER TO  
BE CONSTRUCTED ON THE  
PAVEMENT SHOWN ON THIS SHEET.  
TOP OF CURB ELEVATIONS ARE  
GIVEN FOR FULL HEIGHT CURB.



**Baughman**

MEADOWLAKE BEACH ADD. - PH. I  
**MEADOWVIEW**  
STA 15+04.03 TO STA 19+13.23

---

Baughman Company, P.A. 315 Ellis St. Wichita, KS 67211 P3162627271 F3162620149  
ENGINEERING | SURVEYING | PLANNING | LANDSCAPE ARCHITECTURE

PROJECT NUMBER 412-84540	DESIGN ATD	DRAWN TMS
REVISIONS:	APPROVED	DATE 01/08
SCALE Noted		
SHEET		10 OF 34

---

MeadowlakeBeach/Str4
06-10-E679