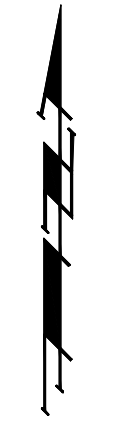


BM #1 - City of Wichita
 Benchmark Disc, SE Corner of
 Clifton and 55th Street South,
 Southwest corner of RCBG, on top
 of hubguard at the West end.
 ELEV. = 1263.29 NGVD29

BM #2 - "C" Cut on wall footing
 located 29' North of the South
 end of wall, at the Southeast
 corner of Lot 7 Block A,
 Meadowlake Beach Addition,
 Sedgwick County, Kansas.
 ELEV. = 1266.82 NGVD29

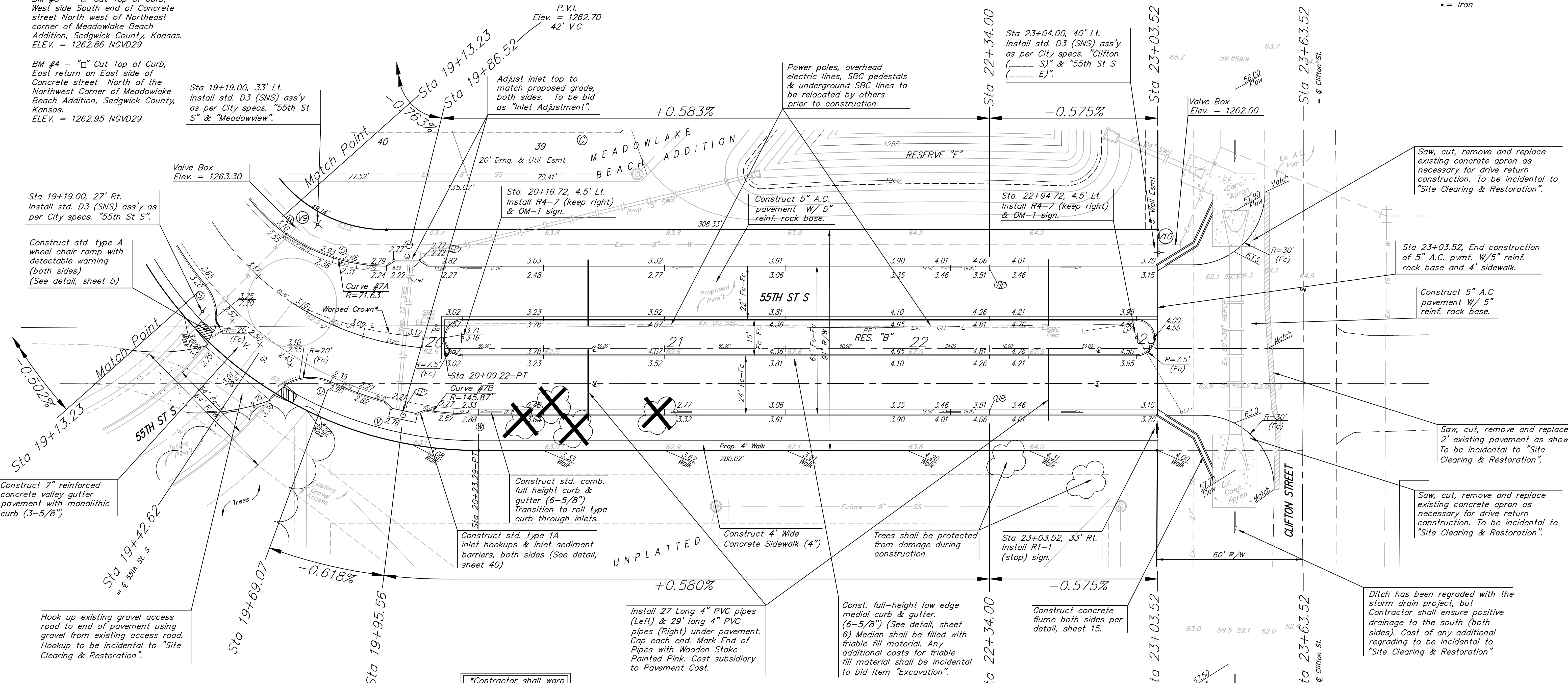
BM #3 - "C" Cut Top of Curb,
 West side South end of Concrete
 street North west of Northeast
 corner of Meadowlake Beach
 Addition, Sedgwick County, Kansas.
 ELEV. = 1262.86 NGVD29

BM #4 - "C" Cut Top of Curb,
 East return on East side of
 Concrete street North of the
 Northwest Corner of Meadowlake
 Beach Addition, Sedgwick County,
 Kansas.
 ELEV. = 1262.95 NGVD29



Scale: 1" = 20' Horizontal

• = Iron



*Contractor shall warp crown to approximate center of pavement.

P.V.I.
 Elev. = 1262.70
 40' V.C.

P.V.I.
 Elev. = 1264.10
 32' V.C.

		MEADOWLAKE BEACH ADD. - PH. I	
		55TH ST. S. STA 19+13.23 TO STA 23+63.52	
Baughman Company, P.A. 315 Ellis St. Wichita, KS 67211 P3162627271 F3162620149 ENGINEERING SURVEYING PLANNING LANDSCAPE ARCHITECTURE			
PROJECT NUMBER 412-84540	DESIGN ATD	DRAWN TMS	DATE 01/08
REVISIONS:	APPROVED	DATE	01/08
SCALE Noted		SHEET 11 OF 34	