

BM #1 - City of Wichita  
Benchmark Disc, SE Corner of  
Clifton and 55th Street South,  
Southwest corner of RCBC, on top  
of hubguard at the West end.  
ELEV. = 1263.29 NGVD29

BM #2 - "C" Cut on wall footing  
located 29' North of the South  
end of wall, at the Southeast  
corner of Lot 7 Block A,  
Meadowlake Beach Addition,  
Sedgwick County, Kansas.  
ELEV. = 1266.82 NGVD29

BM #3 - "C" Cut Top of Curb,  
West side South end of Concrete  
street North west of Northeast  
corner of Meadowlake Beach  
Addition, Sedgwick County, Kansas.  
ELEV. = 1262.86 NGVD29

BM #4 - "C" Cut Top of Curb,  
East return on East side of  
Concrete street North of the  
Northwest Corner of Meadowlake  
Beach Addition, Sedgwick County,  
Kansas.  
ELEV. = 1262.95 NGVD29

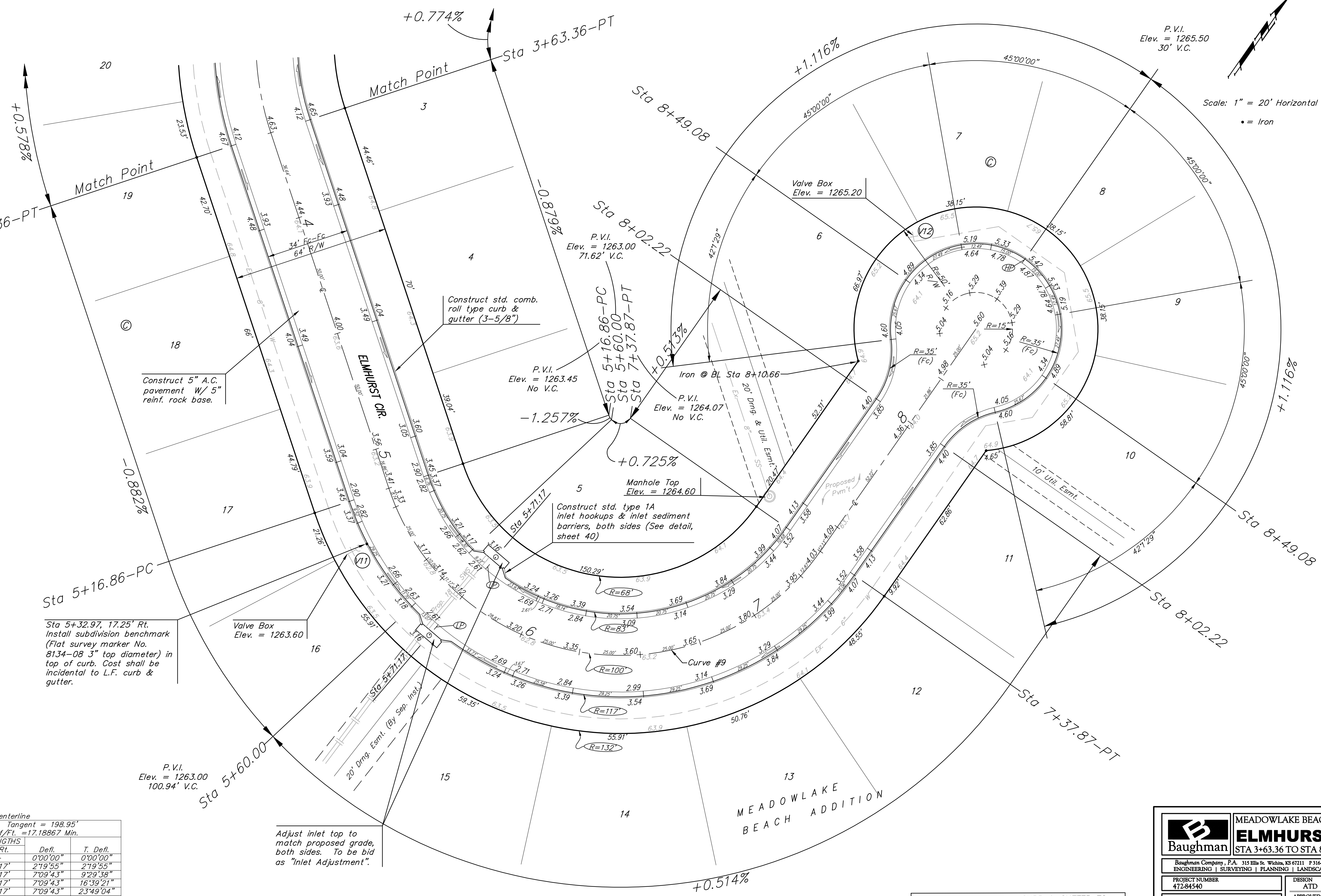
P.V.I.  
Elev. = 1264.80  
73.28' V.C.

P.V.I.  
Elev. = 1264.80  
73.28' V.C.

P.V.I.  
Elev. = 1265.50  
30' V.C.

Scale: 1" = 20' Horizontal

• = Iron



P.V.I.  
Elev. = 1263.00  
100.94' V.C.

Sta 5+32.97, 17.25' Rt.  
Install subdivision benchmark  
(Flat survey marker No.  
8134-08 3" top diameter) in  
top of curb. Cost shall be  
incidental to L.F. curb &  
gutter.

Construct std. comb.  
roll type curb &  
gutter (3-5/8")

Construct 5" A.C.  
pavement W/ 5"  
reinf. rock base.

Construct std. type 1A  
inlet hookups & inlet sediment  
barriers, both sides (See detail,  
sheet 40)

Adjust inlet top to  
match proposed grade,  
both sides. To be bid  
as "inlet Adjustment".

NOTE:  
ROLL TYPE CURB & GUTTER TO  
BE CONSTRUCTED ON THE  
PAVEMENT SHOWN ON THIS SHEET.  
TOP OF CURB ELEVATIONS ARE  
GIVEN FOR FULL HEIGHT CURB.

Curve #9  
Curve Data Based on Centerline  
Rad. = 100' Delta = 126° 37' 44" Tangent = 198.95'  
Arc = 221.01' L.C. = 178.70' Def./Ft. = 17.18867 Min.

Station	Arc	FACE CHORD LENGTHS		Defl.	T. Defl.
		8' Lt.	8' Rt.		
5+16.86	-	-	-	0'00"00"	0'00"00"
5+25.00	8.14'	6.10'	10.17'	2'19"55"	2'19"55"
5+50.00	25.00'	18.70'	31.17'	7'09"43"	9'29"38"
5+75.00	25.00'	18.70'	31.17'	7'09"43"	16'39"21"
6+00.00	25.00'	18.70'	31.17'	7'09"43"	23'49"04"
6+25.00	25.00'	18.70'	31.17'	7'09"43"	30'58'47"
6+50.00	25.00'	18.70'	31.17'	7'09"43"	38'08'30"
6+75.00	25.00'	18.70'	31.17'	7'09"43"	45'18'13"
7+00.00	25.00'	18.70'	31.17'	7'09"43"	52'27'56"
7+25.00	25.00'	18.70'	31.17'	7'09"43"	59'37'39"
7+37.87	12.87'	9.65'	16.08'	3'41"13"	63'18'52"

**Baughman** MEADOWLAKE BEACH ADD. - PH. I  
**ELMHURST CIR.**  
STA 3+63.36 TO STA 8+49.08

Baughman Company, P.A. 315 Ellis St. Wichita, KS 67211 P3162627271 F3162620149  
ENGINEERING | SURVEYING | PLANNING | LANDSCAPE ARCHITECTURE

PROJECT NUMBER  
412-84540

DESIGN  
ATD

DRAWN  
TMS

APPROVED

DATE  
01/08

SCALE  
Noted

SHEET  
**13 OF 34**

MeadowlakeBeach\Str7 06-10-E679