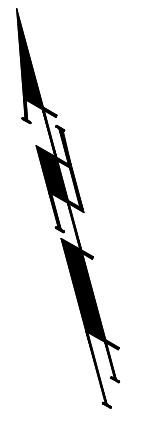
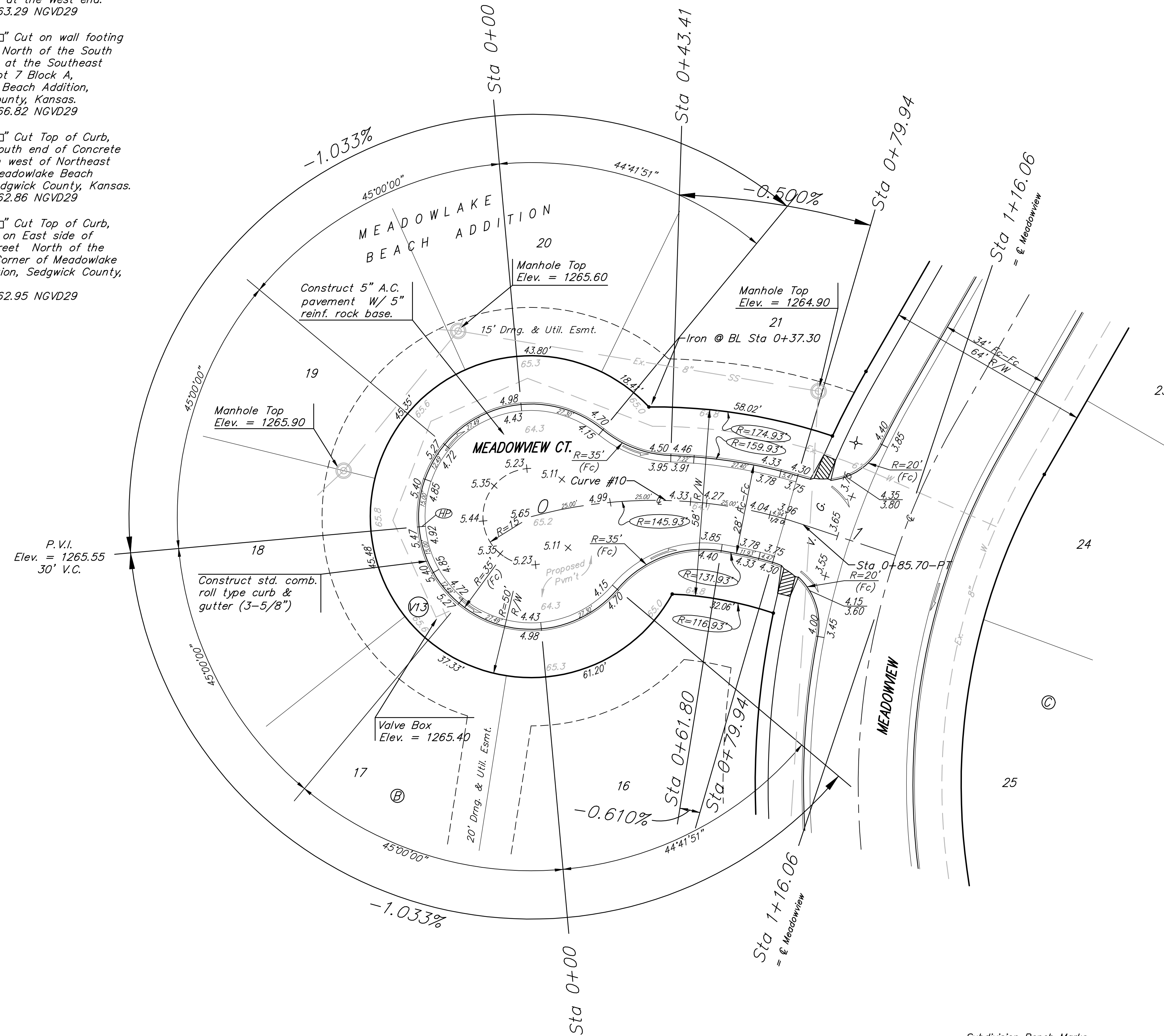


BM #1 - City of Wichita
Benchmark Disc, SE Corner of
Clifton and 55th Street South,
Southwest corner of RCBC, on top
of hubguard at the West end.
ELEV. = 1263.29 NGVD29

BM #2 - "□" Cut on wall footing
located 29' North of the South
end of wall, at the Southeast
corner of Lot 7 Block A,
Meadowlake Beach Addition,
Sedgwick County, Kansas.
ELEV. = 1266.82 NGVD29

BM #3 - "□" Cut Top of Curb,
West side South end of Concrete
street North west of Northeast
corner of Meadowlake Beach
Addition, Sedgwick County, Kansas.
ELEV. = 1262.86 NGVD29

BM #4 - "□" Cut Top of Curb,
East return on East side of
Concrete street North of the
Northwest Corner of Meadowlake
Beach Addition, Sedgwick County,
Kansas.
ELEV. = 1262.95 NGVD29



Scale: 1" = 20' Horizontal

• = Iron

WATER VALVE LOCATION TABLE

VALVE NUMBER	STREET	BASELINE STATION	OFFSET DISTANCE	OFFSET DIRECTION
V1	Maywood	5+31.70	26'	Lt.
V2	Meadowview	5+87.39	26'	Lt.
V3	Meadowview	7+74.09	26'	Lt.
V4	Meadowview	8+85.95	26'	Lt.
V5	Meadowview	12+04.43	26'	Lt.
V6	Meadowview	15+16.99	26'	Lt.
V7	Meadowview	17+65.91	26'	Lt.
V8	Meadowview	17+76.91	26'	Lt.
V9	Meadowview	19+22.46	27.5'	Lt.
V10	Meadowview	23+10.46	43'	Lt.
V11	Meadowview Ct.	5+32.97	26'	Rt.
V12	Meadowview Ct.	8+63.95	41.3'	Lt.
V13	Meadowview Ct.	0-36.73	22.4'	Rt.
V14	Shoffner	0+00	26'	Rt.
V15	Meadowview Ct.	0+17.83	19.3'	Rt.
V16	Meadowview Ct.	2+41.50	23'	Lt.
V17	Meadowview Ct.	1+68.08	39.7'	Lt.

Paving contractor will be responsible to operate all water valves on the project, in the presence of the inspector, to ensure accessibility to the valves, and that all valves are left in the "ON" position when the project is completed.

Subdivision Bench Marks

Street & Station	Location Description	Elevation
Meadowview 7+74.09, 17.25' Lt.	Adjacent to common lot line of Lots 22-23, Block C.	
Meadowview 17+76.91, 17.25' Lt.	Adjacent to Fire Hydrant at S. End of S. Curb Return of Meadowview & Meadowview Ct. (Lots 33-40, Block C)	
Elmhurst Cir. 5+32.97, 17.25' Rt.	Adjacent to common lot line of Lots 16-17, Block C.	
Shoffner 0+00, 17.25' Rt.	Adjacent to P.C. in curb north of Lot 80, Block A.	
Meadowview Ct. 2+41.50, 14.25' Lt.	Adjacent to Fire Hydrant at W. End of N. Curb Return of Meadowview & Meadowview Ct. (Lots 83-91, Block A)	

Curve #10
Curve Data Based on Centerline
Rad. = 145.93' Delta = 33° 38' 56" Tangent = 44.13'
Arc = 85.7' L.C. = 84.48' Del/Ft. = 11.77908 Min.

Station	Arc	FACE CHORD LENGTHS		Defl.	T. Defl.
		8' Lt.	8' Rt.		
0+00.00	-	-	-	0°00'00"	0°00'00"
0+25.00	25.00'	28.73'	21.21'	4°54'28"	4°54'28"
0+43.41	18.41'	21.17'	15.62'	3°36'51"	8°31'20"
0+61.80	18.39'	21.15'	15.61'	3°36'37"	12°07'57"
0+79.94	18.14'	20.86'	15.40'	3°33'40"	15°41'37"
0+85.70	5.76'	6.63'	4.89'	1°07'51"	16°49'28"

NOTE: ROLL TYPE CURB & GUTTER TO BE CONSTRUCTED ON THE PAVEMENT SHOWN ON THIS SHEET. TOP OF CURB ELEVATIONS ARE GIVEN FOR FULL HEIGHT CURB.

Baughman Company, P.A. 315 Ellis St. Wichita, KS 67211 P3162627271 F3162620149
ENGINEERING | SURVEYING | PLANNING | LANDSCAPE ARCHITECTURE

PROJECT NUMBER
412-84540

DESIGN ATD
APPROVED

REVISIONS:

MEADOWLAKE BEACH ADD. - PH. I
MEADOWVIEW CT.
LOTS 16-21, BLOCK B

DATE
01/08

SCALE
Noted

SHEET
14 OF 34

MeadowlakeBeach\Surb 06-10-E679