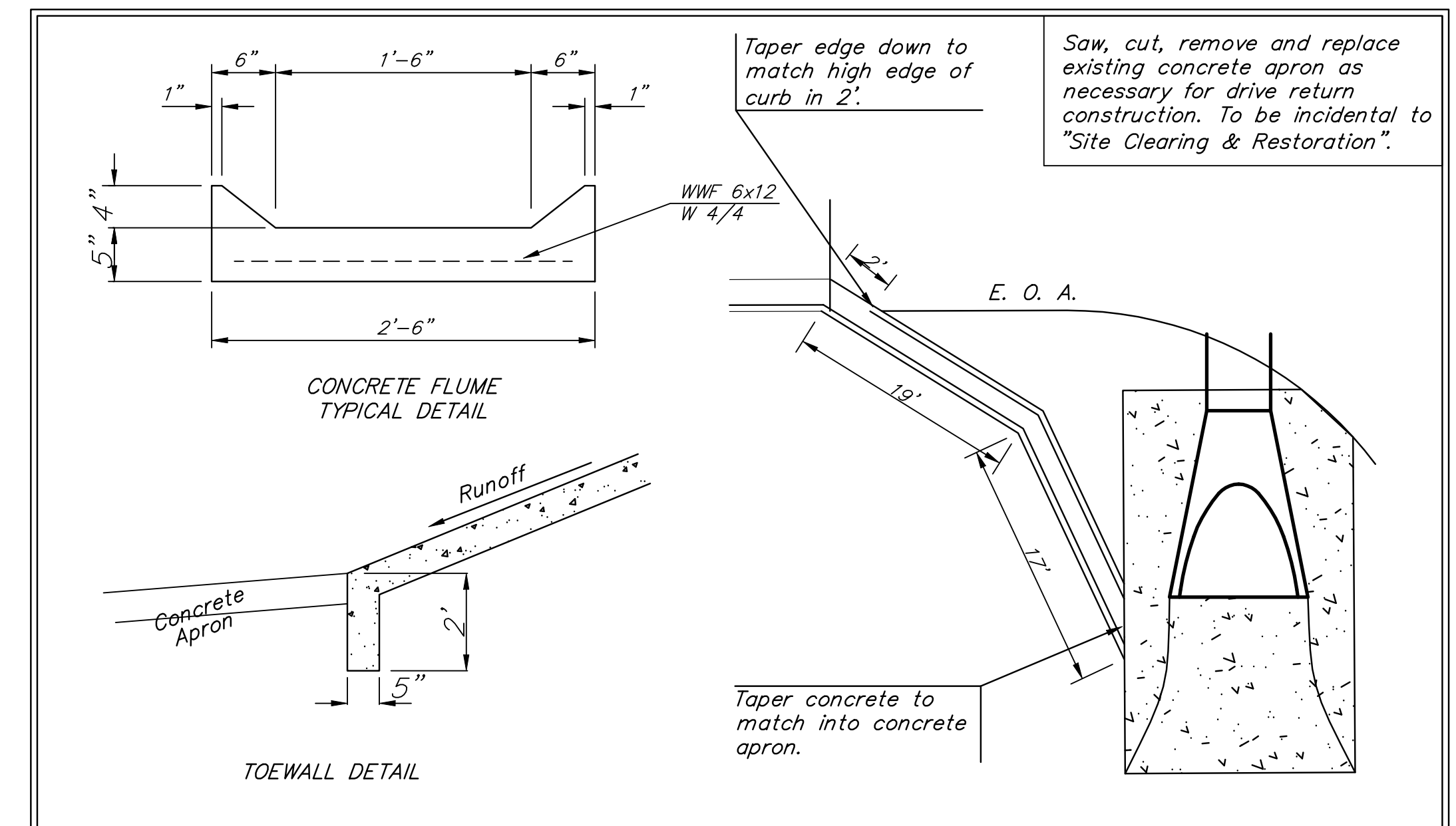
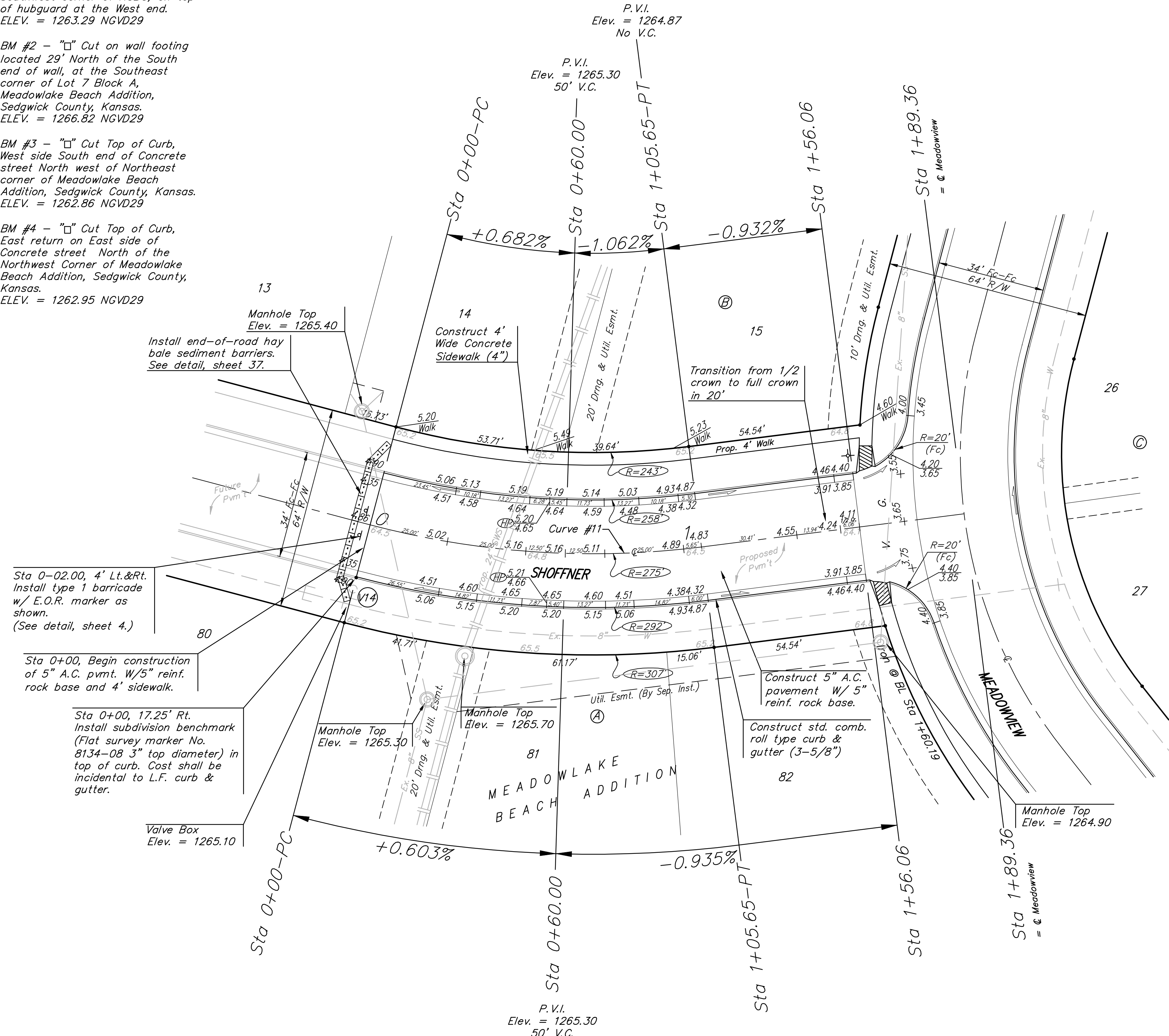
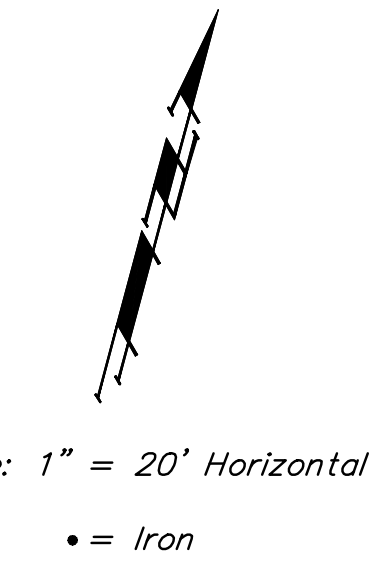


BM #1 - City of Wichita
 Benchmark Disc, SE Corner of
 Clifton and 55th Street South,
 Southwest corner of RCBC, on top
 of hubguard at the West end.
 ELEV. = 1263.29 NGVD29

BM #2 - "□" Cut on wall footing
 located 29' North of the South
 end of wall, at the Southeast
 corner of Lot 7 Block A,
 Meadowlake Beach Addition,
 Sedgwick County, Kansas.
 ELEV. = 1266.82 NGVD29

BM #3 - "□" Cut Top of Curb,
 West side South end of Concrete
 street North west of Northeast
 corner of Meadowlake Beach
 Addition, Sedgwick County, Kansas.
 ELEV. = 1262.86 NGVD29

BM #4 - "□" Cut Top of Curb,
 East return on East side of
 Concrete street North of the
 Northwest Corner of Meadowlake
 Beach Addition, Sedgwick County,
 Kansas.
 ELEV. = 1262.95 NGVD29



Sta 0-02.00, 4' Lt.&Rt.
 Install type 1 barricade
 w/ E.O.R. marker as
 shown.
 (See detail, sheet 4.)

Sta 0+00, Begin construction
 of 5" A.C. pvm't. W/5" reinf.
 rock base and 4' sidewalk.

Sta 0+00, 17.25' Rt.
 Install subdivision benchmark
 (Flat survey marker No.
 8134-08 3" top diameter)
 in top of curb. Cost shall be
 incidental to L.F. curb &
 gutter.

Valve Box
 Elev. = 1265.10

Manhole Top
 Elev. = 1265.30

Manhole Top
 Elev. = 1265.70

Manhole Top
 Elev. = 1264.90

Curve #11
 Curve Data Based on Centerline
 Rad. = 275' Delta = 22°00' 42" Tangent = 53.48'
 Arc = 105.65' L.C. = 105.00' Def./Ft. = 6.25036 Min.

Station	Arc	FACE CHORD LENGTHS			Defl.	T. Defl.
		8' Lt.	8' Rt.	8' Chord		
0+00.00	0.00'	0.00'	0.00'	0.00'	0°00'00"	0°00'00"
0+25.00	25.00'	22.72'	27.26'	2'36"15"	2°36'15"	2°36'15"
0+50.00	25.00'	22.72'	27.26'	2'36"15"	5°12'31"	5°12'31"
0+75.00	25.00'	22.72'	27.26'	2'36"15"	7°48'46"	7°48'46"
1+00.00	25.00'	22.72'	27.26'	2'36"15"	10°25'02"	10°25'02"
1+05.65	5.65'	5.14'	6.16'	0°35'19"	11°00'21"	11°00'21"

NOTE: ROLL TYPE CURB & GUTTER TO BE CONSTRUCTED ON THE PAVEMENT SHOWN ON THIS SHEET. TOP OF CURB ELEVATIONS ARE GIVEN FOR FULL HEIGHT CURB.

Baughman MEADOWLAKE BEACH ADD. - PH. I
SHOFFNER
 STA 0+00 TO STA 1+89.36

Baughman Company, P.A. 315 Ellis St. Wichita, KS 67211 P 316-262-7271 F 316-262-0149
 ENGINEERING | SURVEYING | PLANNING | LANDSCAPE ARCHITECTURE

PROJECT NUMBER: 412-84540 DESIGN: ATD DRAWN: TMS
 APPROVED: DATE: 01/08
 SCALE: Noted SHEET: 15 OF 34

MeadowlakeBeach\Str9 06-10-E679