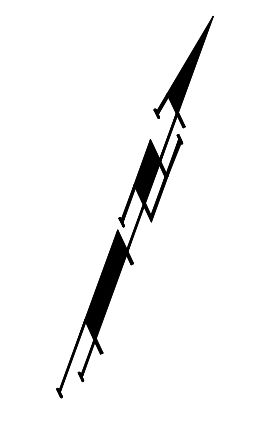


BM #1 - City of Wichita
 Benchmark Disc, SE Corner of
 Clifton and 55th Street South,
 Southwest corner of RCBC, on top
 of hubguard at the West end.
 ELEV. = 1263.29 NGVD29

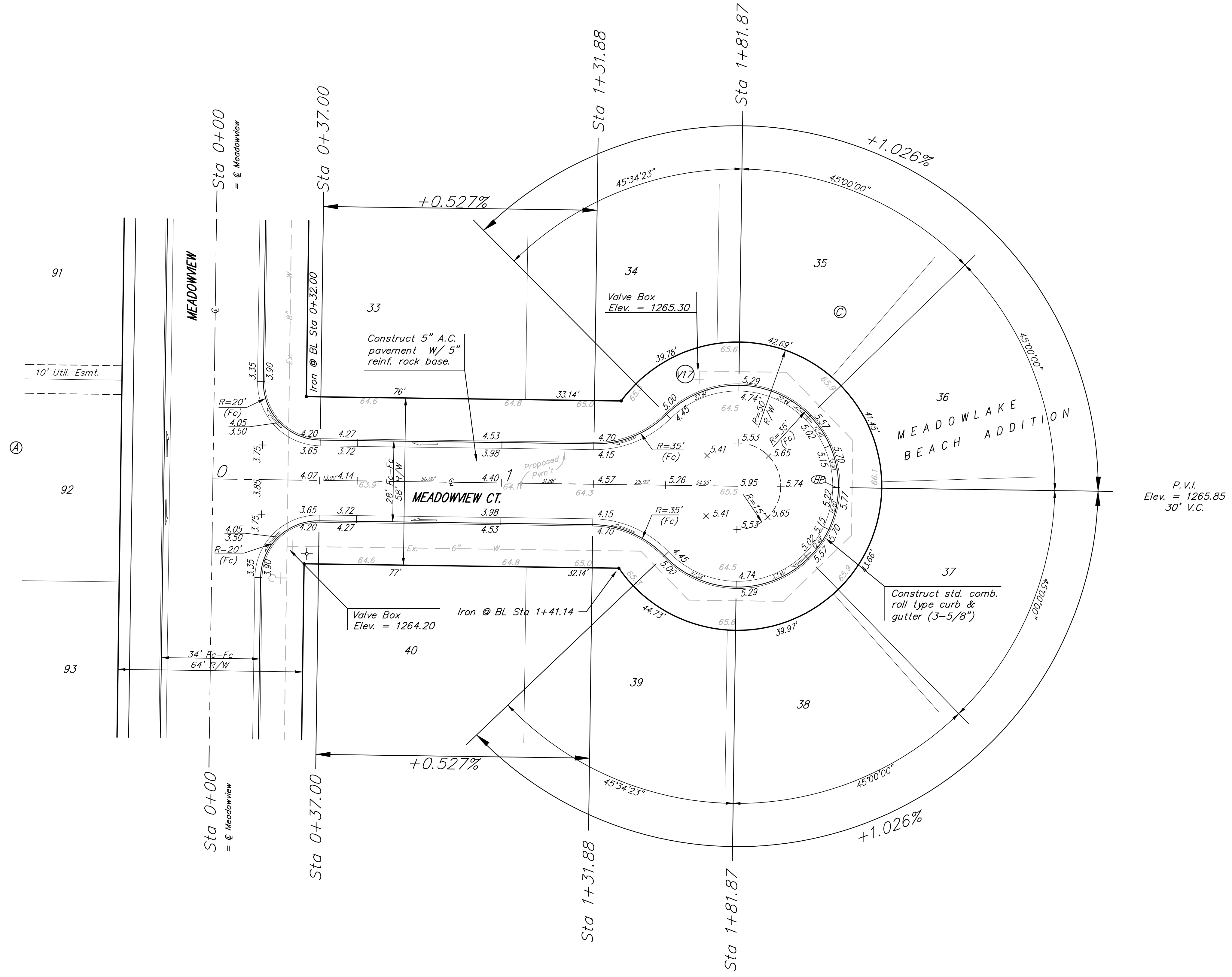
BM #2 - "□" Cut on wall footing
 located 29' North of the South
 end of wall, at the Southeast
 corner of Lot 7 Block A,
 Meadowlake Beach Addition,
 Sedgwick County, Kansas.
 ELEV. = 1266.82 NGVD29

BM #3 - "□" Cut Top of Curb,
 West side South end of Concrete
 street North west of Northeast
 corner of Meadowlake Beach
 Addition, Sedgwick County, Kansas.
 ELEV. = 1262.86 NGVD29

BM #4 - "□" Cut Top of Curb,
 East return on East side of
 Concrete street North of the
 Northwest Corner of Meadowlake
 Beach Addition, Sedgwick County,
 Kansas.
 ELEV. = 1262.95 NGVD29



Scale: 1" = 20' Horizontal
 • = Iron



P.V.I.
 Elev. = 1265.85
 30' V.C.

NOTE: ROLL TYPE CURB & GUTTER TO BE CONSTRUCTED ON THE PAVEMENT SHOWN ON THIS SHEET. TOP OF CURB ELEVATIONS ARE GIVEN FOR FULL HEIGHT CURB.

		MEADOWLAKE BEACH ADD. - PH. I MEADOWVIEW CT. LOTS 33-40, BLOCK C	
<small>Baughman Company, P.A. 315 Ellis St. Wichita, KS 67211 F3162627271 F3162620149 ENGINEERING SURVEYING PLANNING LANDSCAPE ARCHITECTURE</small>			
PROJECT NUMBER 472-84540	DESIGN ATD	DRAWN TMS	DATE 01/08
REVISIONS:	APPROVED	SCALE Noted	SHEET
			17 OF 34
MeadowlakeBeach\Str11		06-10-E679	