

FINAL PLAT

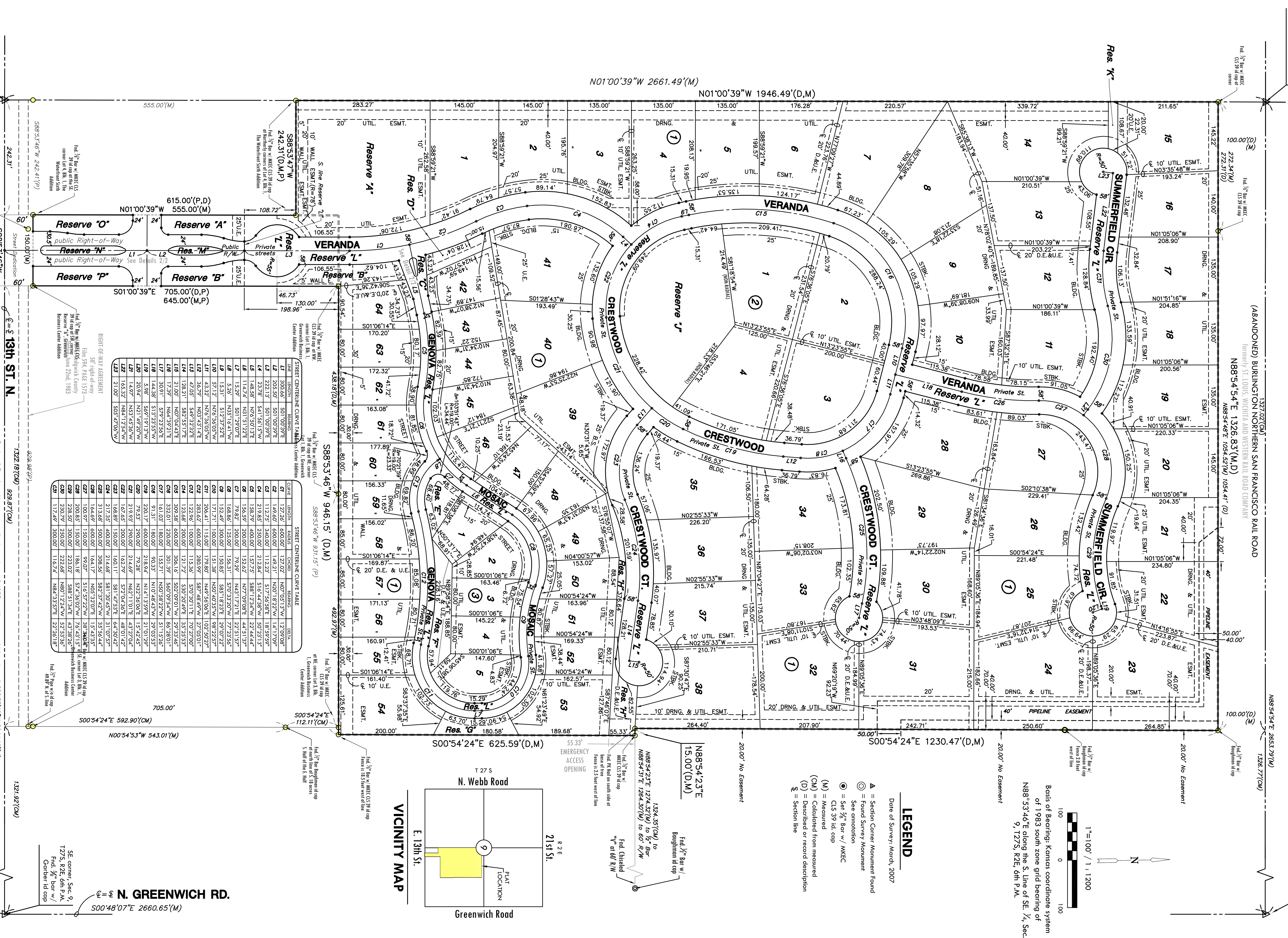
THE WATERFRONT RESIDENTIAL ADDITION

AN ADDITION TO WICHITA, SEDGWICK COUNTY, KANSAS

Center, Sec. 9, T27S, R2E, 6th P.M.,
 1/2" Pipe w/ 1/2" id cap

NE corner, SE 1/4, Sec. 9,
 T27S, R2E, 6th P.M.,
 1/2" Bar w/ MKEC
 CIS 39 id cap

(ABANDONED) BURLINGTON NORTHERN SAN FRANCISCO RAIL ROAD
 Formerly St. Louis, Wichita and Western Rail Road (CP&W)
 N88°54'54"E 1326.83'(M.D)
 N88°54'48"E 1054.52'(M.D)
 1054.41'(D)



RIGHT-OF-WAY ABATEMENT
 50' right-of-way
 From 594' Plat 1513
 50' right-of-way of Sedgwick County
 Reserve "N", Oklahoma Business Center
 Business Center Addition
 2110, 1983

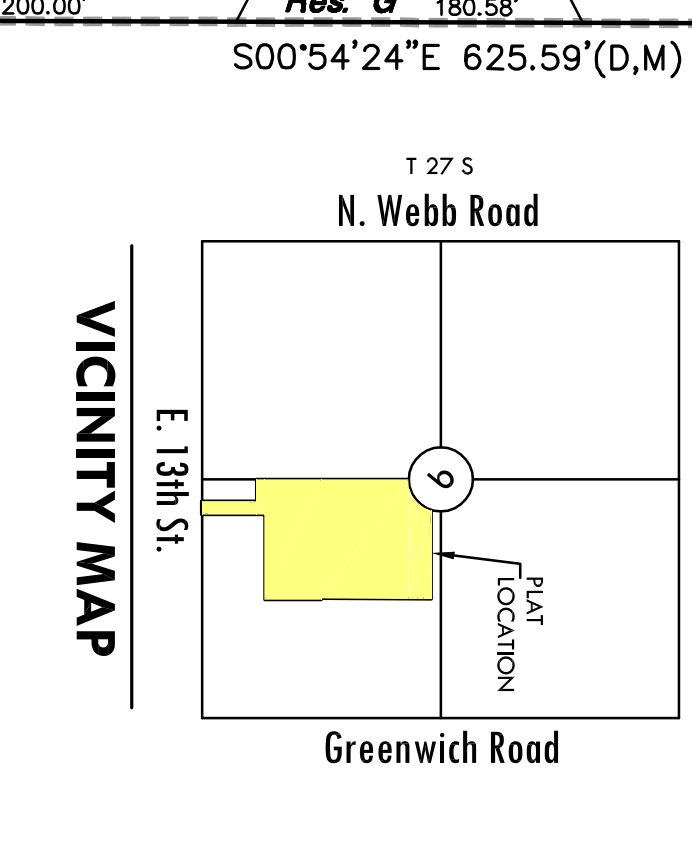
STREET CENTERLINE CURVE TABLE	STREET CENTERLINE CURVE TABLE	STREET CENTERLINE CURVE TABLE
C1 205.50'	C1 205.50'	C1 205.50'
C2 223.17'	C2 223.17'	C2 223.17'
C3 242.31'	C3 242.31'	C3 242.31'
C4 261.45'	C4 261.45'	C4 261.45'
C5 280.59'	C5 280.59'	C5 280.59'
C6 300.00'	C6 300.00'	C6 300.00'
C7 319.14'	C7 319.14'	C7 319.14'
C8 338.28'	C8 338.28'	C8 338.28'
C9 357.42'	C9 357.42'	C9 357.42'
C10 376.56'	C10 376.56'	C10 376.56'
C11 395.70'	C11 395.70'	C11 395.70'
C12 414.84'	C12 414.84'	C12 414.84'
C13 433.98'	C13 433.98'	C13 433.98'
C14 453.12'	C14 453.12'	C14 453.12'
C15 472.26'	C15 472.26'	C15 472.26'
C16 491.40'	C16 491.40'	C16 491.40'
C17 510.54'	C17 510.54'	C17 510.54'
C18 529.68'	C18 529.68'	C18 529.68'
C19 548.82'	C19 548.82'	C19 548.82'
C20 567.96'	C20 567.96'	C20 567.96'
C21 587.10'	C21 587.10'	C21 587.10'
C22 606.24'	C22 606.24'	C22 606.24'
C23 625.38'	C23 625.38'	C23 625.38'
C24 644.52'	C24 644.52'	C24 644.52'
C25 663.66'	C25 663.66'	C25 663.66'
C26 682.80'	C26 682.80'	C26 682.80'
C27 701.94'	C27 701.94'	C27 701.94'
C28 721.08'	C28 721.08'	C28 721.08'
C29 740.22'	C29 740.22'	C29 740.22'
C30 759.36'	C30 759.36'	C30 759.36'
C31 778.50'	C31 778.50'	C31 778.50'
C32 797.64'	C32 797.64'	C32 797.64'
C33 816.78'	C33 816.78'	C33 816.78'
C34 835.92'	C34 835.92'	C34 835.92'
C35 855.06'	C35 855.06'	C35 855.06'
C36 874.20'	C36 874.20'	C36 874.20'
C37 893.34'	C37 893.34'	C37 893.34'
C38 912.48'	C38 912.48'	C38 912.48'
C39 931.62'	C39 931.62'	C39 931.62'
C40 950.76'	C40 950.76'	C40 950.76'
C41 969.90'	C41 969.90'	C41 969.90'
C42 989.04'	C42 989.04'	C42 989.04'
C43 1008.18'	C43 1008.18'	C43 1008.18'
C44 1027.32'	C44 1027.32'	C44 1027.32'
C45 1046.46'	C45 1046.46'	C45 1046.46'
C46 1065.60'	C46 1065.60'	C46 1065.60'
C47 1084.74'	C47 1084.74'	C47 1084.74'
C48 1103.88'	C48 1103.88'	C48 1103.88'
C49 1123.02'	C49 1123.02'	C49 1123.02'
C50 1142.16'	C50 1142.16'	C50 1142.16'
C51 1161.30'	C51 1161.30'	C51 1161.30'
C52 1180.44'	C52 1180.44'	C52 1180.44'
C53 1199.58'	C53 1199.58'	C53 1199.58'
C54 1218.72'	C54 1218.72'	C54 1218.72'
C55 1237.86'	C55 1237.86'	C55 1237.86'
C56 1257.00'	C56 1257.00'	C56 1257.00'
C57 1276.14'	C57 1276.14'	C57 1276.14'
C58 1295.28'	C58 1295.28'	C58 1295.28'
C59 1314.42'	C59 1314.42'	C59 1314.42'
C60 1333.56'	C60 1333.56'	C60 1333.56'
C61 1352.70'	C61 1352.70'	C61 1352.70'
C62 1371.84'	C62 1371.84'	C62 1371.84'
C63 1390.98'	C63 1390.98'	C63 1390.98'
C64 1410.12'	C64 1410.12'	C64 1410.12'
C65 1429.26'	C65 1429.26'	C65 1429.26'
C66 1448.40'	C66 1448.40'	C66 1448.40'
C67 1467.54'	C67 1467.54'	C67 1467.54'
C68 1486.68'	C68 1486.68'	C68 1486.68'
C69 1505.82'	C69 1505.82'	C69 1505.82'
C70 1524.96'	C70 1524.96'	C70 1524.96'
C71 1544.10'	C71 1544.10'	C71 1544.10'
C72 1563.24'	C72 1563.24'	C72 1563.24'
C73 1582.38'	C73 1582.38'	C73 1582.38'
C74 1601.52'	C74 1601.52'	C74 1601.52'
C75 1620.66'	C75 1620.66'	C75 1620.66'
C76 1639.80'	C76 1639.80'	C76 1639.80'
C77 1658.94'	C77 1658.94'	C77 1658.94'
C78 1678.08'	C78 1678.08'	C78 1678.08'
C79 1697.22'	C79 1697.22'	C79 1697.22'
C80 1716.36'	C80 1716.36'	C80 1716.36'
C81 1735.50'	C81 1735.50'	C81 1735.50'
C82 1754.64'	C82 1754.64'	C82 1754.64'
C83 1773.78'	C83 1773.78'	C83 1773.78'
C84 1792.92'	C84 1792.92'	C84 1792.92'
C85 1812.06'	C85 1812.06'	C85 1812.06'
C86 1831.20'	C86 1831.20'	C86 1831.20'
C87 1850.34'	C87 1850.34'	C87 1850.34'
C88 1869.48'	C88 1869.48'	C88 1869.48'
C89 1888.62'	C89 1888.62'	C89 1888.62'
C90 1907.76'	C90 1907.76'	C90 1907.76'
C91 1926.90'	C91 1926.90'	C91 1926.90'
C92 1946.04'	C92 1946.04'	C92 1946.04'
C93 1965.18'	C93 1965.18'	C93 1965.18'
C94 1984.32'	C94 1984.32'	C94 1984.32'
C95 2003.46'	C95 2003.46'	C95 2003.46'
C96 2022.60'	C96 2022.60'	C96 2022.60'
C97 2041.74'	C97 2041.74'	C97 2041.74'
C98 2060.88'	C98 2060.88'	C98 2060.88'
C99 2080.02'	C99 2080.02'	C99 2080.02'
C100 2099.16'	C100 2099.16'	C100 2099.16'

STREET CENTERLINE CURVE TABLE

STREET CENTERLINE CURVE TABLE	STREET CENTERLINE CURVE TABLE	STREET CENTERLINE CURVE TABLE
C1 205.50'	C1 205.50'	C1 205.50'
C2 223.17'	C2 223.17'	C2 223.17'
C3 242.31'	C3 242.31'	C3 242.31'
C4 261.45'	C4 261.45'	C4 261.45'
C5 280.59'	C5 280.59'	C5 280.59'
C6 300.00'	C6 300.00'	C6 300.00'
C7 319.14'	C7 319.14'	C7 319.14'
C8 338.28'	C8 338.28'	C8 338.28'
C9 357.42'	C9 357.42'	C9 357.42'
C10 376.56'	C10 376.56'	C10 376.56'
C11 395.70'	C11 395.70'	C11 395.70'
C12 414.84'	C12 414.84'	C12 414.84'
C13 433.98'	C13 433.98'	C13 433.98'
C14 453.12'	C14 453.12'	C14 453.12'
C15 472.26'	C15 472.26'	C15 472.26'
C16 491.40'	C16 491.40'	C16 491.40'
C17 510.54'	C17 510.54'	C17 510.54'
C18 529.68'	C18 529.68'	C18 529.68'
C19 548.82'	C19 548.82'	C19 548.82'
C20 567.96'	C20 567.96'	C20 567.96'
C21 587.10'	C21 587.10'	C21 587.10'
C22 606.24'	C22 606.24'	C22 606.24'
C23 625.38'	C23 625.38'	C23 625.38'
C24 644.52'	C24 644.52'	C24 644.52'
C25 663.66'	C25 663.66'	C25 663.66'
C26 682.80'	C26 682.80'	C26 682.80'
C27 701.94'	C27 701.94'	C27 701.94'
C28 721.08'	C28 721.08'	C28 721.08'
C29 740.22'	C29 740.22'	C29 740.22'
C30 759.36'	C30 759.36'	C30 759.36'
C31 778.50'	C31 778.50'	C31 778.50'
C32 797.64'	C32 797.64'	C32 797.64'
C33 816.78'	C33 816.78'	C33 816.78'
C34 835.92'	C34 835.92'	C34 835.92'
C35 855.06'	C35 855.06'	C35 855.06'
C36 874.20'	C36 874.20'	C36 874.20'
C37 893.34'	C37 893.34'	C37 893.34'
C38 912.48'	C38 912.48'	C38 912.48'
C39 931.62'	C39 931.62'	C39 931.62'
C40 950.76'	C40 950.76'	C40 950.76'
C41 969.90'	C41 969.90'	C41 969.90'
C42 989.04'	C42 989.04'	C42 989.04'
C43 1008.18'	C43 1008.18'	C43 1008.18'
C44 1027.32'	C44 1027.32'	C44 1027.32'
C45 1046.46'	C45 1046.46'	C45 1046.46'
C46 1065.60'	C46 1065.60'	C46 1065.60'
C47 1084.74'	C47 1084.74'	C47 1084.74'
C48 1103.88'	C48 1103.88'	C48 1103.88'
C49 1123.02'	C49 1123.02'	C49 1123.02'
C50 1142.16'	C50 1142.16'	C50 1142.16'
C51 1161.30'	C51 1161.30'	C51 1161.30'
C52 1180.44'	C52 1180.44'	C52 1180.44'
C53 1199.58'	C53 1199.58'	C53 1199.58'
C54 1218.72'	C54 1218.72'	C54 1218.72'
C55 1237.86'	C55 1237.86'	C55 1237.86'
C56 1257.00'	C56 1257.00'	C56 1257.00'
C57 1276.14'	C57 1276.14'	C57 1276.14'
C58 1295.28'	C58 1295.28'	C58 1295.28'
C59 1314.42'	C59 1314.42'	C59 1314.42'
C60 1333.56'	C60 1333.56'	C60 1333.56'
C61 1352.70'	C61 1352.70'	C61 1352.70'
C62 1371.84'	C62 1371.84'	C62 1371.84'
C63 1390.98'	C63 1390.98'	C63 1390.98'
C64 1410.12'	C64 1410.12'	C64 1410.12'
C65 1429.26'	C65 1429.26'	C65 1429.26'
C66 1448.40'	C66 1448.40'	C66 1448.40'
C67 1467.54'	C67 1467.54'	C67 1467.54'
C68 1486.68'	C68 1486.68'	C68 1486.68'
C69 1505.82'	C69 1505.82'	C69 1505.82'
C70 1524.96'	C70 1524.96'	C70 1524.96'
C71 1544.10'	C71 1544.10'	C71 1544.10'
C72 1563.24'	C72 1563.24'	C72 1563.24'
C73 1582.38'	C73 1582.38'	C73 1582.38'
C74 1601.52'	C74 1601.52'	C74 1601.52'
C75 1620.66'	C75 1620.66'	C75 1620.66'
C76 1639.80'	C76 1639.80'	C76 1639.80'
C77 1658.94'	C77 1658.94'	C77 1658.94'
C78 1678.08'	C78 1678.08'	C78 1678.08'
C79 1697.22'	C79 1697.22'	C79 1697.22'
C80 1716.36'	C80 1716.36'	C80 1716.36'
C81 1735.50'	C81 1735.50'	C81 1735.50'
C82 1754.64'	C82 1754.64'	C82 1754.64'
C83 1773.78'	C83 1773.78'	C83 1773.78'
C84 1792.92'	C84 1792.92'	C84 1792.92'
C85 1812.06'	C85 1812.06'	C85 1812.06'
C86 1831.20'	C86 1831.20'	C86 1831.20'
C87 1850.34'	C87 1850.34'	C87 1850.34'
C88 1869.48'	C88 1869.48'	C88 1869.48'
C89 1888.62'	C89 1888.62'	C89 1888.62'
C90 1907.76'	C90 1907.76'	C90 1907.76'
C91 1926.90'	C91 1926.90'	C91 1926.90'
C92 1946.04'	C92 1946.04'	C92 1946.04'
C93 1965.18'	C93 1965.18'	C93 1965.18'
C94 1984.32'	C94 1984.32'	C94 1984.32'
C95 2003.46'	C95 2003.46'	C95 2003.46'
C96 2022.60'	C96 2022.60'	C96 2022.60'
C97 2041.74'	C97 2041.74'	C97 2041.74'
C98 2060.88'	C98 2060.88'	C98 2060.88'
C99 2080.02'	C99 2080.02'	C99 2080.02'
C100 2099.16'	C100 2099.16'	C100 2099.16'

1. Pipeline Building Setback:
 No habitable structure will be built within 50 feet of the pipeline unless the landowner agrees to pay the cost of lowering the pipeline, and or provide the appropriate cover to comply with Department of Transportation regulations, and or unless approved by the pipeline company.

2. Street Drains Encasements:
 Along Genova Street and Mosaic where there is 32' of right-of-way a 15' street drainage, and utility easement is provided abutting and adjoining the 32' right-of-way as indicated.



LEGEND
 Date of Survey: March, 2007

- ▲ = Section Corner Monument Found
- ⊙ = Found Survey Monument
- See annotation
- ⊙ = Set 1/2" Bar w/ MKEC
- ⊙ = CIS 39 id cap
- (M) = Measured
- (C) = Calculated from measured
- (D) = Described or record description
- ⊞ = Section line

Bas of Bearing: Kansas coordinate system
 of 1983 south zone grid bearing of
 N88°53'46"E along the S. Line of SE 1/4, Sec.
 9, T27S, R2E, 6th P.M.

1"=100' / 1:1200

NOTES

SE corner, Sec. 9,
 T27S, R2E, 6th P.M.,
 1/2" Bar w/ MKEC
 CIS 39 id cap

411 N. WEBB ROAD
 WICHITA, KS. 67206
 316 - 684 - 9600

MKEC
 ENGINEERING
 CONSULTANTS, INC.

31001 Oakbrook Way, Overland Park, KS 66