

**CERTIFICATE OF SURVEY**

I, Gregory J. Allison, a registered land surveyor in Kansas, do hereby certify that I have been in responsible charge of surveying and platting of "GREENWICH OFFICE PARK ADDITION", an addition to Wichita, Sedgwick County, Kansas, into Lots, a Block, and a Street, the same being accurately set forth in the accompanying plat and described herein:

A tract of land lying in a portion of the West Half of the Southeast Quarter of Section 9, Township 27 South, Range 2 East of the Sixth Principal Meridian, Wichita, Sedgwick County, Kansas, said tract of land being more particularly described as follows:  
**COMMENCING** at the southwest corner of said Quarter; thence along the south line of said Southeast Quarter on a Kansas coordinate system of 1983 south zone grid bearing of N88°53'46"E, 392.31 feet to the POINT OF BEGINNING; thence parallel with the west line of said Southeast Quarter N01°00'39"W, 705.00 feet; thence parallel with the south line of said Southeast Quarter N88°53'46"E, 931.15 feet to the east line of said West Half; thence along said east line S00°54'24"E, 705.00 feet to the south line of said Southeast Quarter; thence along said south line S88°53'46"W, 929.87 feet to the POINT OF BEGINNING.

All reserves, streets, utility easements, building setbacks, and access controls, together with, an easement for right-of-way recorded in Film 594, Page 1573; a contingent street dedication recorded in Film 378, Page 142, together with all other public dedications within the above described property are hereby vacated and replatted by virtue of K.S.A. 12-512(b).

I hereby certify that the details of this plat are correct to the best of my knowledge and belief this \_\_\_ day of \_\_\_\_\_, 2007.

Gregory J. Allison, PE, LS #1257  
 MKEC Engineering Consultants, Inc.  
 411 North Webb Road  
 Wichita, Kansas 67206

Know all men by these presents that we the undersigned property owners of the land above set forth in the Registered Land Surveyor's Certificate, have caused the same to be surveyed and platted into Lots, a Block, a Street the same to be known as "GREENWICH OFFICE PARK ADDITION," an addition to Wichita, Sedgwick County, Kansas.

Easements for the construction and maintenance of public utilities and drainage, as indicated on the accompanying plat are hereby granted to the public.

The streets are hereby dedicated to and for the use of the public.

All abutters rights of access to or from 13th Street over and across the south line of "GREENWICH OFFICE PARK ADDITION," are hereby granted to the appropriate governing body, as indicated hereon, Lots 2 and 3 shall have access locations per the access control notes as stated hereon.

A drainage plan has been developed for this plat. All drainage easements, right-of-way, or reserves shall remain at established grades or as modified with the approval of the applicable City or County Engineer, and unobstructed to allow for the conveyance of storm water.

**OWNER'S CERTIFICATES**

Greenwich 13, L.L.C., a Kansas limited liability company

\_\_\_\_\_, Manager  
 George Laham, Manager

STATE OF KANSAS, SEDGWICK COUNTY) ss:

This instrument was acknowledged before me on \_\_\_ day of \_\_\_\_\_, 2007, by George Laham, Manager, Greenwich 13, L.L.C., a Kansas limited liability company.

IN WITNESS WHEREOF, I have hereunto set my hand and affixed my official seal, the day and year last above written.

\_\_\_\_\_, Notary Public  
 Notary Public: \_\_\_\_\_  
 Sign and print below  
 My Term Expires: \_\_\_\_\_

SEAL

as to Lot 1, Block 1

HARTMAN OIL CO., INC.

\_\_\_\_\_, President  
 Willis E. Hartman, President

STATE OF KANSAS, SEDGWICK COUNTY) ss:

This instrument was acknowledged before me on \_\_\_ day of \_\_\_\_\_, 2007, by Willis E. Hartman, President, Hartman Oil Co., Inc.

IN WITNESS WHEREOF, I have hereunto set my hand and affixed my official seal, the day and year last above written.

\_\_\_\_\_, Notary Public  
 Notary Public: \_\_\_\_\_  
 Sign and print below  
 My Term Expires: \_\_\_\_\_

SEAL

**MORTGAGE CERTIFICATE**

We INTRUST Bank, N.A. holders of a mortgage on the above described property, do hereby consent to the plat of "GREENWICH OFFICE PARK ADDITION."

INTRUST Bank, N.A.

\_\_\_\_\_, Executive Vice President  
 Gary D. Schmitt, Executive Vice President

This instrument was acknowledged before me on this \_\_\_ day of \_\_\_\_\_, 2007, by Gary D. Schmitt, Executive Vice President, INTRUST Bank, N.A.

IN WITNESS WHEREOF, I have hereunto set my hand and affixed my official seal, the day and year last above written.

\_\_\_\_\_, Notary Public  
 Notary Public: \_\_\_\_\_  
 Sign and print below  
 My Term Expires: \_\_\_\_\_

SEAL

**PLANNING COMMISSION CERTIFICATE**

This plat of "GREENWICH OFFICE PARK ADDITION" has been submitted to and approved by the Wichita-Sedgwick County Metropolitan Area Planning Commission, Wichita, Kansas.

Dated this \_\_\_ day of \_\_\_\_\_, 2007

WICHITA-SEDGWICK COUNTY METROPOLITAN AREA PLANNING COMMISSION

\_\_\_\_\_, Chair  
 Darrell A. Downing, Chair

Attest: \_\_\_\_\_, Secretary  
 John L. Schlegel, Secretary

Affix MAPC Seal

**GOVERNING BODY CERTIFICATE**

The dedications shown on this plat are hereby accepted and this plat is hereby approved by the governing body of the City of Wichita, Kansas.

Dated this \_\_\_ day of \_\_\_\_\_, 2007

At the direction of the City Council.

\_\_\_\_\_, Mayor  
 Carl Brewer, Mayor

Attest: \_\_\_\_\_, City Clerk  
 Karen Sublett, City Clerk

Affix City Seal

**TRANSFER RECORD**

STATE OF KANSAS, SEDGWICK COUNTY) ss:

Entered on transfer record this \_\_\_ day of \_\_\_\_\_, 2007

\_\_\_\_\_, County Clerk  
 Don Brace, County Clerk

Affix County Clerk Seal

**REGISTER OF DEEDS CERTIFICATE**

STATE OF KANSAS, SEDGWICK COUNTY) ss:

This is to certify that this instrument was filed for record in the Register of Deeds office this \_\_\_ day of \_\_\_\_\_, 2007, at \_\_\_\_\_ o'clock \_\_\_M; and is duly recorded.

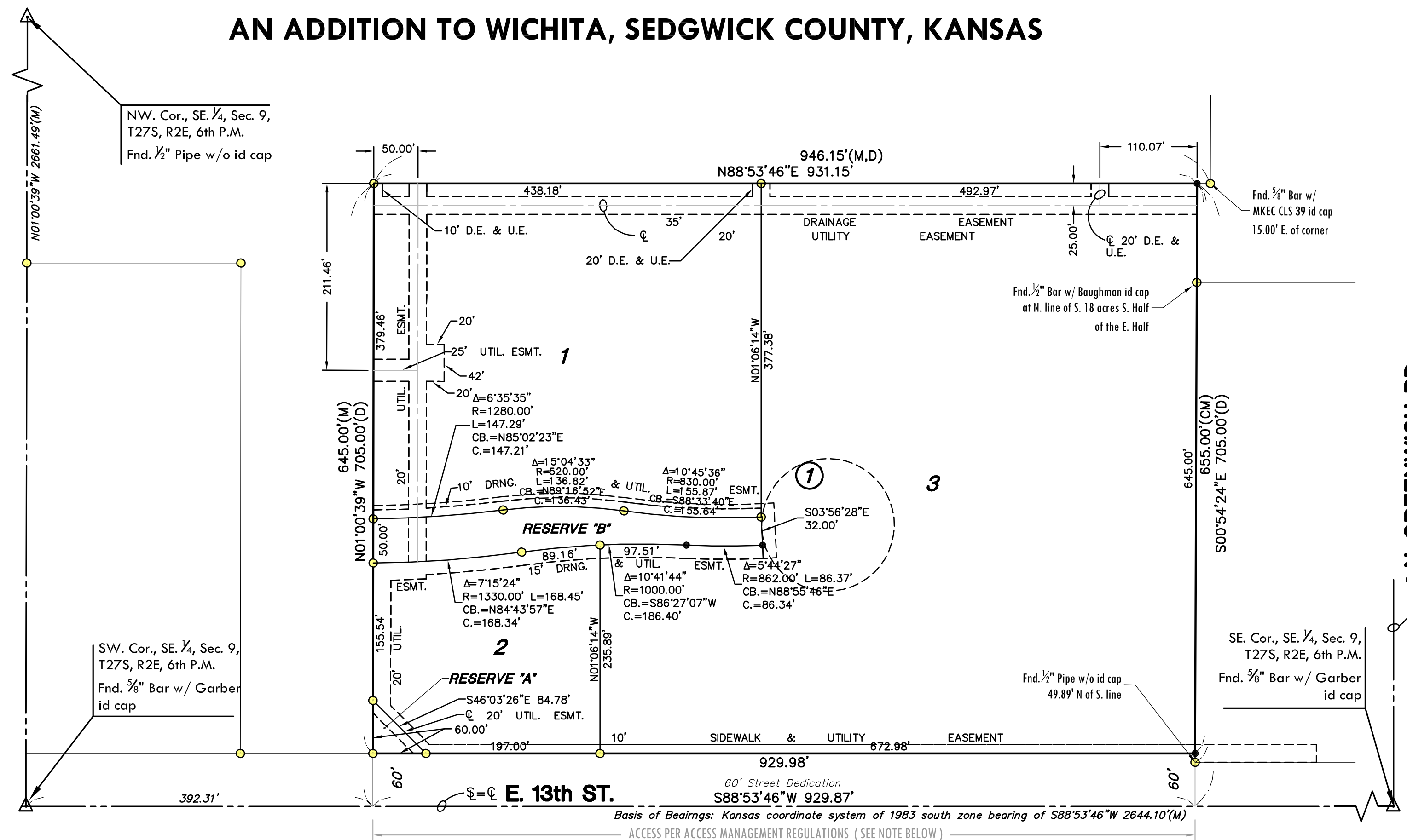
\_\_\_\_\_, Register of Deeds  
 Bill Meek, Register of Deeds

Attest: \_\_\_\_\_, Deputy  
 Tonya E. Buckingham, Deputy

Affix Register of Deeds Seal

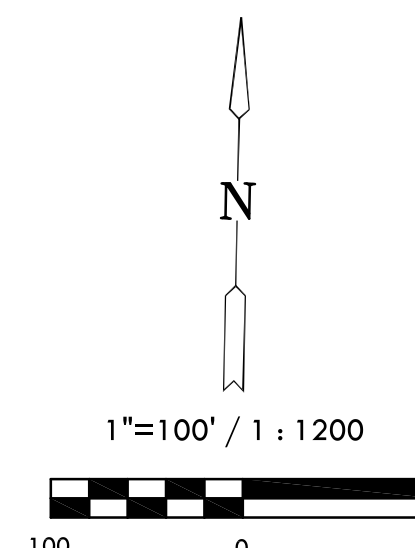
**FINAL PLAT  
 GREENWICH OFFICE PARK ADDITION**

**AN ADDITION TO WICHITA, SEDGWICK COUNTY, KANSAS**



**LEGEND**

- Date of Survey: March, 2007
- △ = Section Corner Monument Found
- = Found 3/8" rebar w/ MKEC CLS 39 id. cap unless otherwise annotated
- = Set 3/8" rebar w/ MKEC CLS 39 id. cap
- (M) = Measured
- (CM) = Calculated from measured
- (D) = Deeded / described / record



Basis of Bearing: Kansas coordinate system of 1983 south zone grid bearing of S88°53'46"E along the S. line of SE 1/4, Sec. 9, T27S, R2E, 6th P.M.

**COUNTY SURVEYOR**

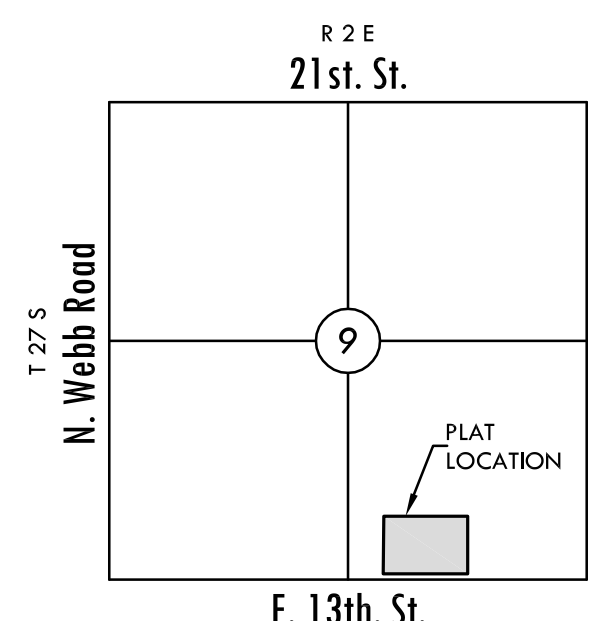
STATE OF KANSAS, SEDGWICK COUNTY) ss:

Reviewed in accordance with K.S.A. 58-2005 on this \_\_\_ day of \_\_\_\_\_, 2007.

\_\_\_\_\_, Deputy County Surveyor  
 Tricia L. Robello, LS #1246  
 Deputy County Surveyor  
 Sedgwick County, Kansas

**ACCESS CONTROLS NOTE**

13th Street - Access points for Lots 2 and 3 shall be placed accordingly: The minimum distance between full turning movement drives shall be 400'. The minimum distance between a right-in/right-out drive and either another right-in/right-out drive or a full movement drive shall be 200'.



**VICINITY MAP**

**MKEC**  
 ENGINEERING  
 CONSULTANTS, INC.

411 N. WEBB ROAD  
 WICHITA, KS. 67206  
 316-684-9600

J:\Civil\07063.dwg (Prop) 07/06/2007 8:51:03 AM DDT