

**WATERFRONT RESIDENTIAL
AND
GREENWICH OFFICE PARK
DRAINAGE PHASE 1**

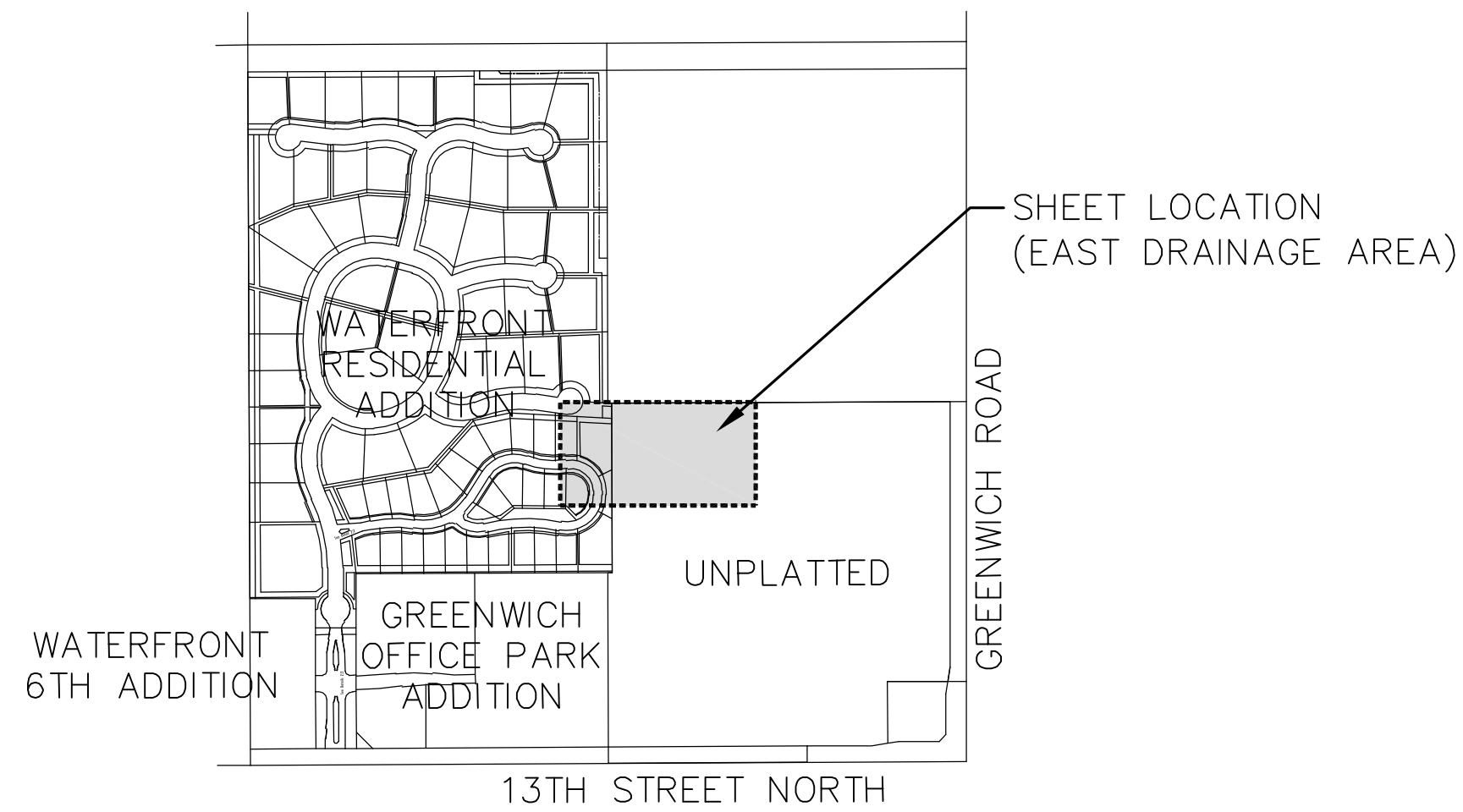
**GRADING
PLAN**

SHEET TITLE
468-84409
PROJECT NUMBER

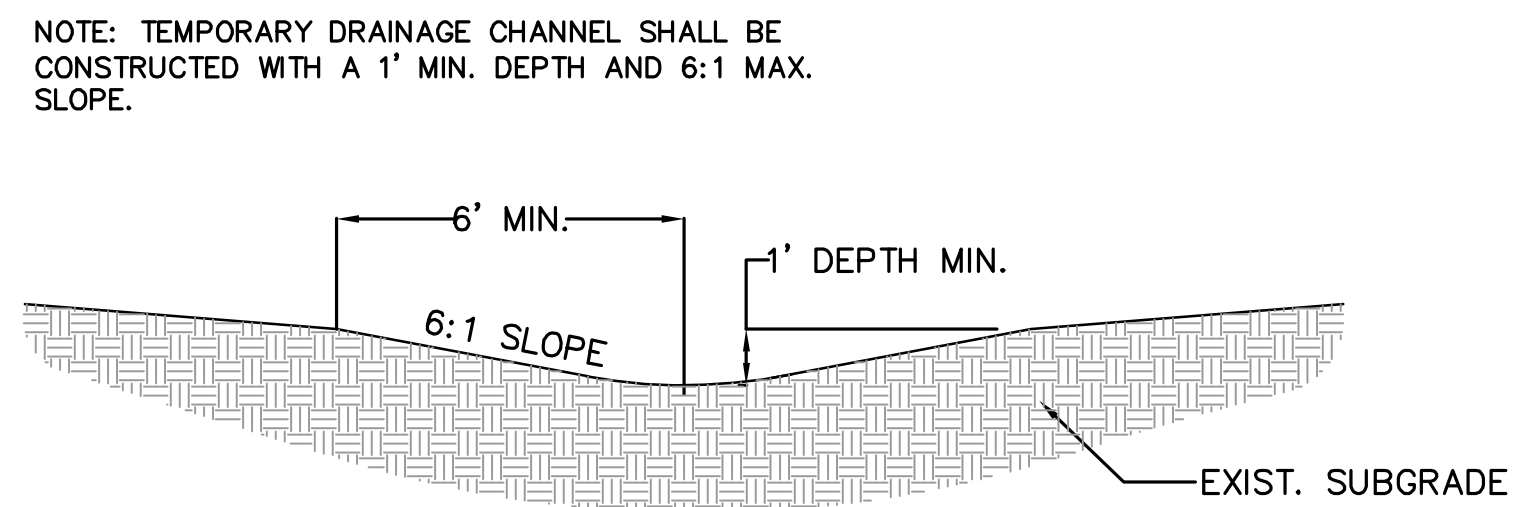
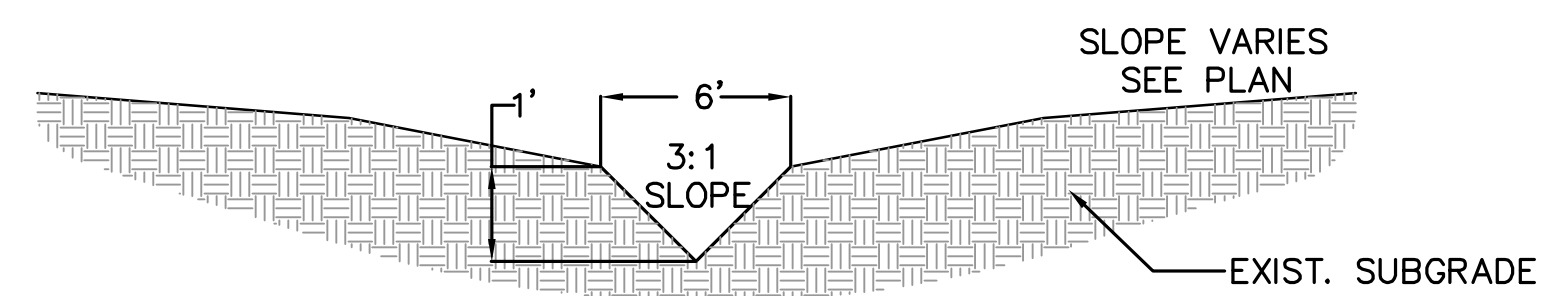
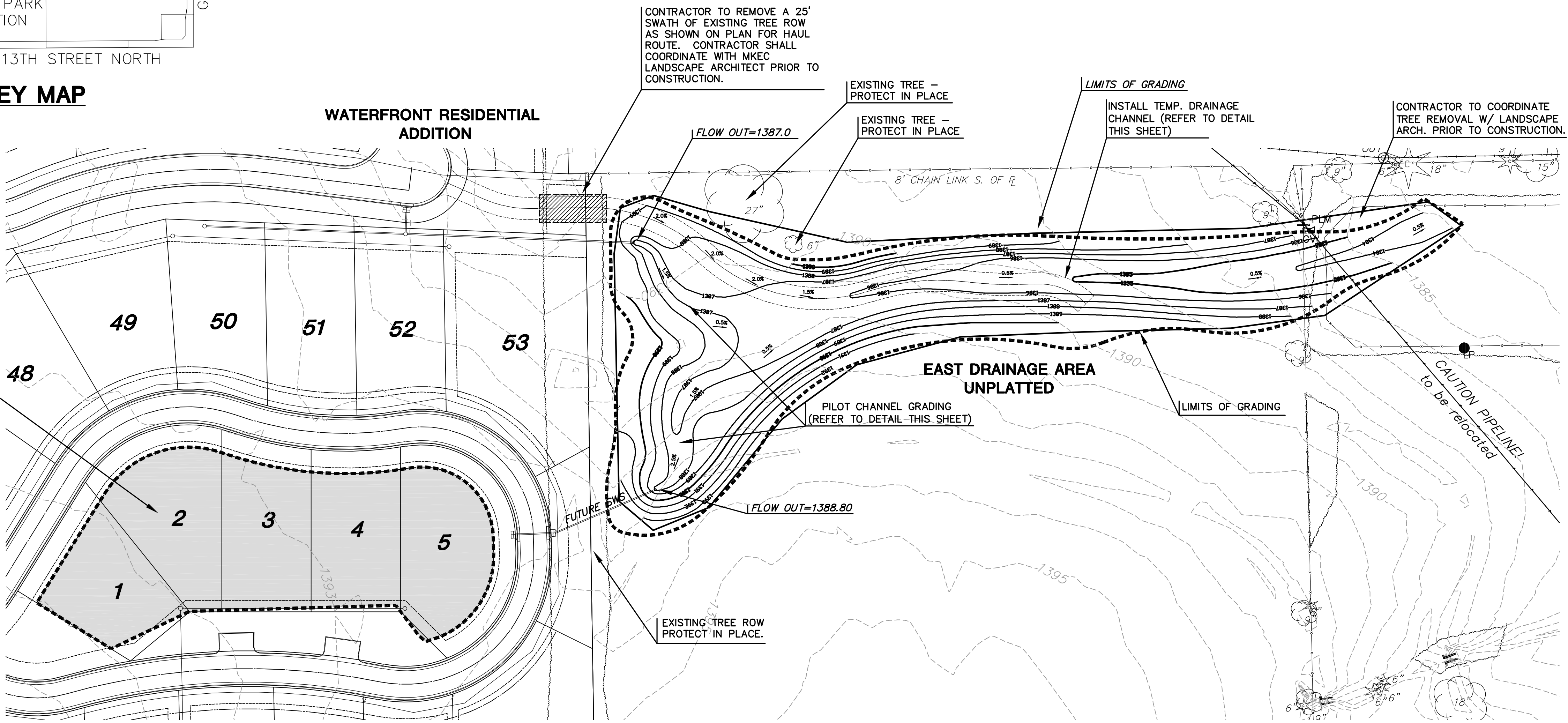
DESIGN BY
SRS
DRAWN BY
MKEC
CHECKED BY
GJA

ISSUED
January 2008
REVISED

SHEET NO.
10 of 21



EAST DRAINAGE AREA FILL LOCATION
AREA TO PLACE EXCAVATION FROM
EAST DRAINAGE AREA - REFER TO
THIS SHEET. COMPACT FILL
MATERIAL TO 95% STANDARD DENSITY
IN 6" LIFTS. FILL AREA UNTIL
MATERIAL FROM EAST DRAINAGE
AREA RUNS OUT. COORDINATE WITH
ENGINEER.



NOTE: TEMPORARY DRAINAGE CHANNEL SHALL BE
CONSTRUCTED WITH A 1' MIN. DEPTH AND 6:1 MAX.
SLOPE.

- LEGEND**
- TREE PROTECTION FENCING
 - PROPOSED TREE PROTECTION
 - w- PROPOSED WATER LINE
 - |-|- PROPOSED SANITARY SEWER LINE
 - 1359- EXISTING CONTOURS
 - 1360- PROPOSED CONTOURS
 - LIMITS OF GRADING
 - EXISTING TREE REMOVAL
 - EAST DRAINAGE AREA FILL LOCATION

PLOTTED: Wednesday, January 16, 2008 @ 11:26AM

J:\CIVIL\06266\DWG\SWS\DRNGPH1_06266_G2.DWG