

FINAL PLAT

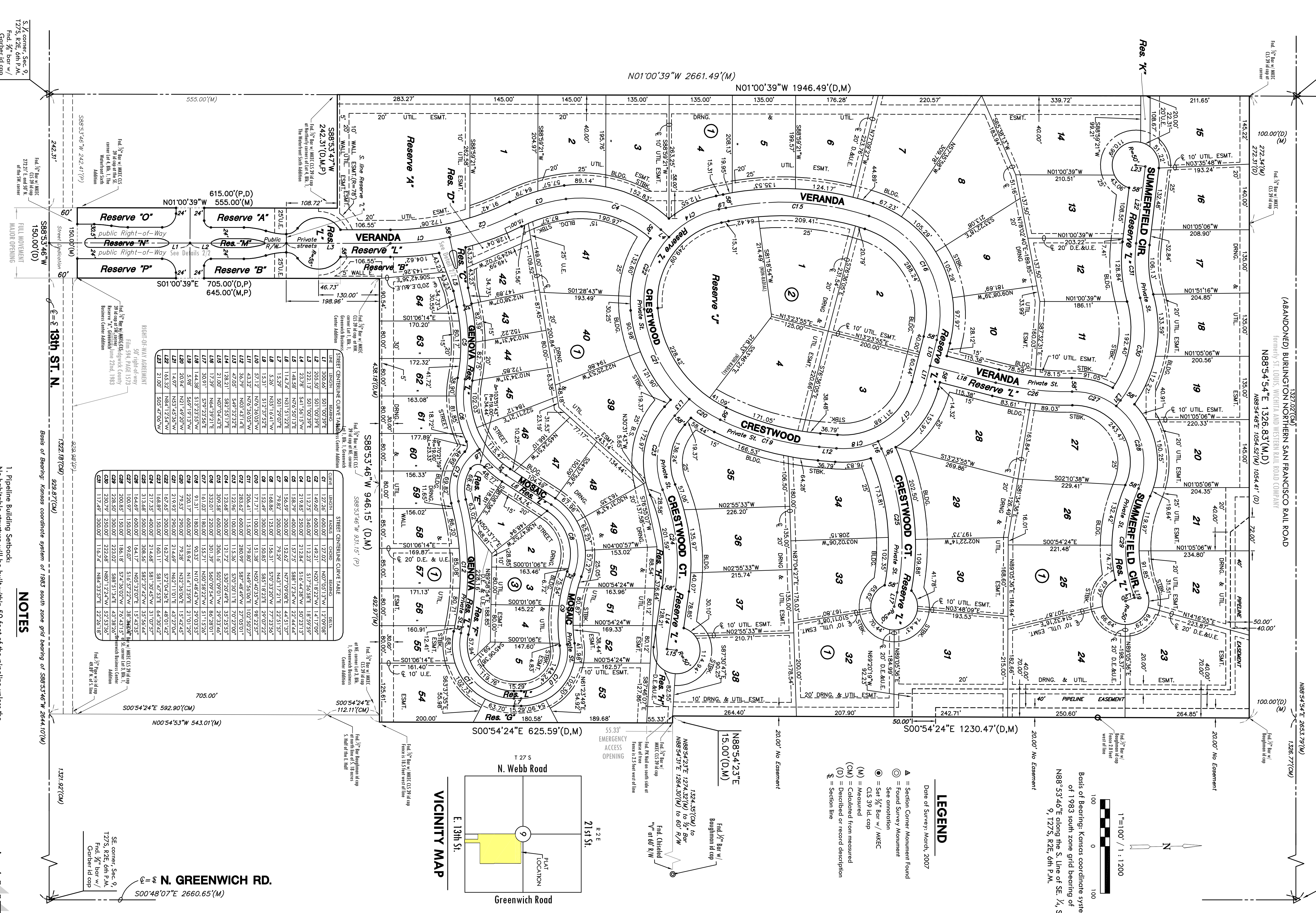
THE WATERFRONT RESIDENTIAL ADDITION

AN ADDITION TO WICHITA, SEDGWICK COUNTY, KANSAS

Center, Sec. 9, T27S, R2E, 6th P.M.
 Find 1/2" Bar w/ 9' id cap

NE corner, Sec. 9, T27S, R2E, 6th P.M.
 Set 3/8" Bar w/ AMEC
 C.I.S. 39' id cap

(ABANDONED) BURLINGTON NORTHERN SAN FRANCISCO RAIL ROAD
 formerly ST LOUIS, WICHITA AND WESTERN RAIL ROAD COMPANY
 N88°54'54"E 1326.83'(M.D)
 N88°54'48"E 1054.52'(M) 1054.41'(D)
 1327.02'(CM)
 1326.77'(CM)



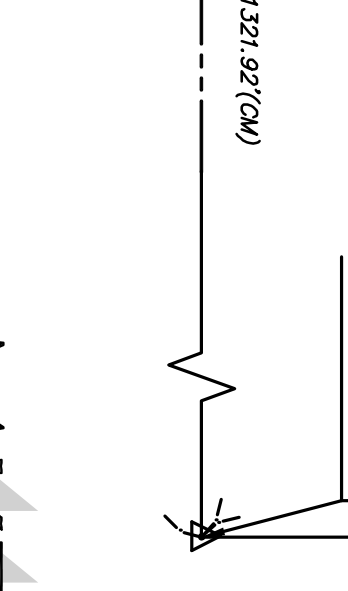
CL	STATION	BEARING	DISTANCE	REMARKS
L1	300.65	S01°00'39"W	150.00	Public Right-of-Way
L2	205.50	S01°00'39"E	150.00	Public Right-of-Way
L3	221.13	S01°00'39"E	150.00	Public Right-of-Way
L4	237.87	S41°56'15"W	150.00	Public Right-of-Way
L5	148.58	N76°50'13"E	150.00	Public Right-of-Way
L6	114.24	N01°31'22"E	150.00	Public Right-of-Way
L7	110.00	N07°04'42"E	150.00	Public Right-of-Way
L8	144.38	S13°23'55"W	150.00	Public Right-of-Way
L9	5.98	S69°19'13"W	150.00	Public Right-of-Way
L10	57.12	N76°56'05"W	150.00	Public Right-of-Way
L11	43.32	N76°56'05"W	150.00	Public Right-of-Way
L12	34.79	N03°43'14"E	150.00	Public Right-of-Way
L13	47.05	S49°32'32"E	150.00	Public Right-of-Way
L14	138.21	S87°53'17"E	150.00	Public Right-of-Way
L15	110.00	N07°04'42"E	150.00	Public Right-of-Way
L16	110.00	N07°04'42"E	150.00	Public Right-of-Way
L17	30.91	S79°23'54"E	150.00	Public Right-of-Way
L18	144.38	S13°23'55"W	150.00	Public Right-of-Way
L19	5.98	S69°19'13"W	150.00	Public Right-of-Way
L20	20.24	N21°49'20"W	150.00	Public Right-of-Way
L21	14.97	N53°45'36"W	150.00	Public Right-of-Way
L22	145.32	N84°12'54"W	150.00	Public Right-of-Way
L23	21.00	S05°27'06"W	150.00	Public Right-of-Way

CL	STATION	BEARING	DISTANCE	REMARKS
C1	127.26	S00°00'00"E	127.02	Centerline of 13th St
C2	149.60	S00°00'00"E	149.21	Centerline of 13th St
C3	112.75	S40°00'00"E	112.23	Centerline of 13th St
C4	219.85	S20°00'00"E	219.84	Centerline of 13th St
C5	138.79	S00°00'00"E	137.75	Centerline of 13th St
C6	158.59	S00°00'00"E	157.62	Centerline of 13th St
C7	168.86	S00°00'00"E	167.86	Centerline of 13th St
C8	152.40	S00°00'00"E	151.88	Centerline of 13th St
C9	171.71	S00°00'00"E	171.38	Centerline of 13th St
C10	206.41	S15°00'00"E	205.99	Centerline of 13th St
C11	208.62	S00°00'00"E	208.10	Centerline of 13th St
C12	123.96	S00°00'00"E	123.44	Centerline of 13th St
C13	133.68	S00°00'00"E	133.16	Centerline of 13th St
C14	309.58	S00°00'00"E	309.16	Centerline of 13th St
C15	141.03	S00°00'00"E	140.51	Centerline of 13th St
C16	91.31	S00°00'00"E	90.79	Centerline of 13th St
C17	220.17	S00°00'00"E	219.64	Centerline of 13th St
C18	79.53	S00°00'00"E	79.01	Centerline of 13th St
C19	219.93	S00°00'00"E	219.41	Centerline of 13th St
C20	167.65	S00°00'00"E	167.13	Centerline of 13th St
C21	168.89	S00°00'00"E	168.37	Centerline of 13th St
C22	217.25	S00°00'00"E	216.73	Centerline of 13th St
C23	144.69	S00°00'00"E	144.17	Centerline of 13th St
C24	100.97	S00°00'00"E	100.45	Centerline of 13th St
C25	200.85	S00°00'00"E	199.33	Centerline of 13th St
C26	230.79	S00°00'00"E	229.27	Centerline of 13th St
C27	117.40	S00°00'00"E	116.88	Centerline of 13th St

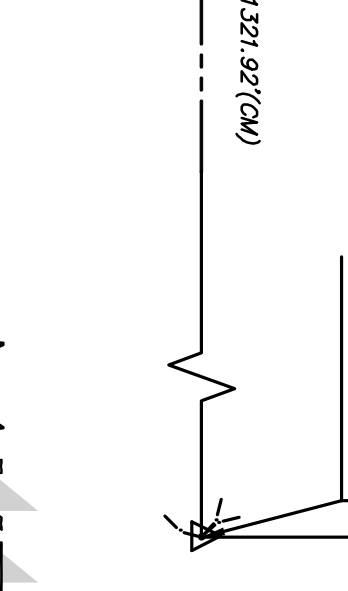
RIGHT-OF-WAY ADJUSTMENT
 50' Right-of-Way
 File No. 1983-270
 Sedgwick County
 Board of Commissioners
 2nd, 1983

SE corner, Sec. 9, T27S, R2E, 6th P.M.
 Find 3/8" bar w/ AMEC
 9' id cap at this pt.
 Center of Sec. 9, T27S, R2E, 6th P.M.
 Find 1/2" bar w/ 9' id cap
 Center of Sec. 9, T27S, R2E, 6th P.M.
 Find 3/8" bar w/ AMEC
 9' id cap at this pt.
 Center of Sec. 9, T27S, R2E, 6th P.M.
 Find 1/2" bar w/ 9' id cap
 Center of Sec. 9, T27S, R2E, 6th P.M.
 Find 3/8" bar w/ AMEC
 9' id cap at this pt.

Notes:
 1. Pipeline Building Setback:
 No habitable structure will be built within 50 feet of the pipeline unless the landowner agrees to pay the cost of lowering the pipeline, and/or provide the appropriate cover to comply with Department of Transportation regulations, and/or unless approved by the pipeline company.
 2. Street Drainage Easements:
 Along Genova Street and Mosaic where there is 32' of right-of-way a 15' street drainage, and utility easement is provided during and adjoining the 32'



LEGEND
 Date of Survey: March, 2007
 Δ = Section Corner Monument Found
 ○ = Found Survey Monument
 See annotation
 ⊙ = Set 3/8" Bar w/ AMEC
 ⊙ = C.I.S. 39' Id. cap
 (M) = Measured
 (CM) = Calculated from measured
 (D) = Described or record description
 § = Section line



Notes of Record: Kansas coordinate system of 1983 south zone grid bearing of N88°53'46"E along the S. Line of SE 1/4, Sec. 9, T27S, R2E, 6th P.M.