

# GENERAL NOTES:

1. Contractor will be required to provide notice to utility companies a minimum of forty-eight (48) hours prior to any excavation, as follows:

Kansas One-Call 687-2470

The Contractor must notify the following in case of an emergency:

Cox Communications 262-4270  
 Kansas Gas Service 1-888-482-4950  
 Westar Energy 383-8650  
 Aquila Energy 1-800-303-0357  
 AT&T 268-2245  
 City of Wichita Water Dept. 268-4563  
 City of Wichita Sewer Maint. 268-4024  
 City of Wichita Storm Sewer Maint. 268-4090  
 City of Wichita Traffic Maint. 268-4034  
 Conoco Phillips Pipeline Co. 1-877-267-2290  
 Southern Star Pipeline Co. 529-6600  
 Kinder-Morgan Pipeline Co. 1-888-844-5658

2. Utility service lines, poles, valve boxes, meters, and etcetera are to be adjusted as necessary by others prior to construction unless the plans specifically call for their adjustment by the Contractor or unless the plans specifically identify a utility to be adjusted by its owner during construction. Existing utilities and their location, as shown on the plans, represent the best information obtainable for design. The Contractor will be required to work around existing utilities within the right-of-way which do not conflict with proposed construction.

3. Rubble from the removal of miscellaneous structures and excess excavation which is to be wasted shall be disposed of on sites to be provided by the Contractor. These sites shall be approved by the Engineer as to suitability, appearance and site location. Locations, in the opinion of the Engineer, that will leave an unsightly appearance will not be approved. All disposal sites must be approved by the Kansas Department of Health and Environment. Material either stockpiled or disposed of in a flood plain would require a Kansas State Board of Agriculture permit. Any material dumped in waters of the United States or wetlands is subject to U.S. Corps of Engineers permitting regulations. Any material buried or stockpiled beyond approved construction limits would require additional archaeological investigations unless buried in a previously approved borrow location.

4. Trees and shrubs in public right-of-way which are in direct conflict with proposed new construction shall be removed by the Contractor with the Engineer's approval. Trees and shrubs which are not in direct conflict with proposed new construction shall be saved and protected from damage.

5. The Contractor shall give all property owners and/or tenants of developed property abutting the construction of this project a minimum of ten (10) days notice prior to start of construction.

6. The Contractor shall be responsible for preserving property irons. The Contractor will be required to re-establish any property irons which are damaged or destroyed by his construction operations. Such irons shall be re-established by a licensed land surveyor in accordance with state laws.

7. All existing and proposed erosion control measures including silt fencing, erosion control mat, straw bales, inlet barriers, and const. entrance shall be maintained throughout construction by the contractor and until project is accepted by the City of Wichita. The on-site engineer shall complete weekly reports on the status of erosion control measures. The contractor shall be required to comply with maintenance and/or replacement of erosion control measures as determined by the on-site engineer until project is accepted by City of Wichita. Maintenance and/or replacement of erosion control measures to be paid as measured quantities. Removal of erosion control measures shall be incidental to L.S. bid item "Site Clearing & Restoration".

8. Limits of earthwork shall match existing ground elevations at the right-of-way line unless otherwise noted on the plans with a new finished grade elevation. When a new finished grade elevation is shown, the earthwork shall extend one foot beyond the right-of-way line and then slope up or down using permissible slopes to match the existing ground surface. Site has been mass graded prior to construction with +/- 0.2' tolerance within street rights-of-way and +/- 0.3' tolerance out side street rights-of-way. No as built available at time of plan production, contractor shall bid dirt work accordingly.

9. All areas disturbed during construction shall be seeded at 300 lbs./acre with Rye Grass immediately following construction in that area. Contractor shall prepare ground per City Specifications.

10. The developer for this project is Jay Russell, (316) 722-2417.

**Benefit District**  
**Proposed Streets**

# STREET PAVING FOR CIMARRON WITH INCIDENTAL SWS IMPROVEMENTS

to serve

## EDGE WATER ADDITION - PH. I

Driftwood from the east line of Lot 52, Block D, west to the west line of Cimarron

Driftwood from the west line of Cimarron, west to the west line of Lot 1, Block A

Cimarron from the south line of 45th St. N., south to the north line of Kollmeyer

Kollmeyer from the east line of Lot 82, Block A, west to the west line of Ridge Port

Ridge Port from the north line of Kollmeyer, north to the north line of Lot 28, Block A

Kollmeyer Ct. (Lots 37 through 42, Block B) from the north line of Kollmeyer, north to and including the cul-de-sac

Kollmeyer Ct. (Lots 31 through 39, Block C) from the north line of Kollmeyer, north to and including the cul-de-sac

Kollmeyer Ct. (Lots 36 through 46, Block A) from the south line of Kollmeyer, south to and including the cul-de-sac

Kollmeyer Ct. (Lots 47 through 56, Block A) from the south line of Kollmeyer, south to and including the cul-de-sac

Kollmeyer Ct. (Lots 63 through 82, Block A) from the south line of Kollmeyer, south to and including the cul-de-sac

Driftwood Ct. (Lots 52 through 62, Block D) from the north line of Driftwood, north to and including the cul-de-sac

# CITY OF WICHITA, KANSAS

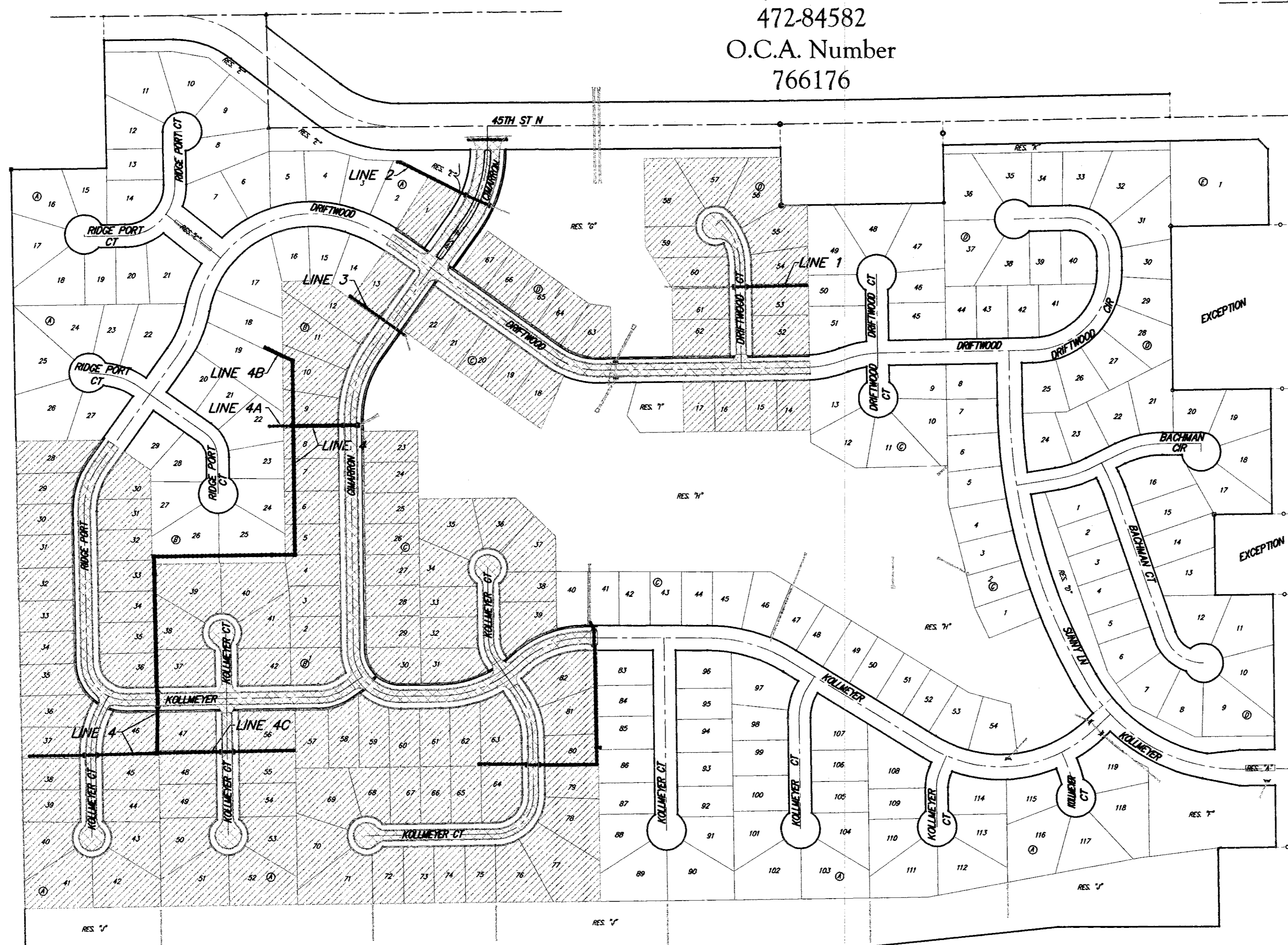
James L. Armour, P.E. City Engineer

Project Number

472-84582

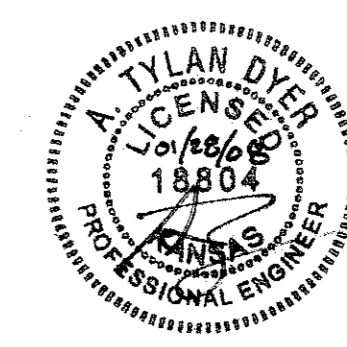
O.C.A. Number

766176



**Project Earthwork Totals**  
 Excavation = 4,387 C.Y.  
 Loose Fill = 1,811 C.Y.  
 Compacted Fill = 471 C.Y.

**Total Project Length**  
 7,111 L.F. = 1.35 Miles



## Benchmarks

BM #1: HOOVER AND 45TH ST. NORTH - COW BENCHMARK AT NE CORNER OF INTERSECTION, 10.20' SSE OF PP, 58.80' ESE OF PP ON NW CORNER, 85.50' NE OF GAS LINE MARKER, 59.00' NORTH OF GAS LINE MARKER, 28.50' EAST OF CENTERLINE, 14.50' NORTH OF CENTERLINE. ELEV. = 1335.29 (NGVD 29)

BM #2: Small RR spike in 3rd PP west of Hoover St. on the north side of 45th St. N. Elev. = 1337.68

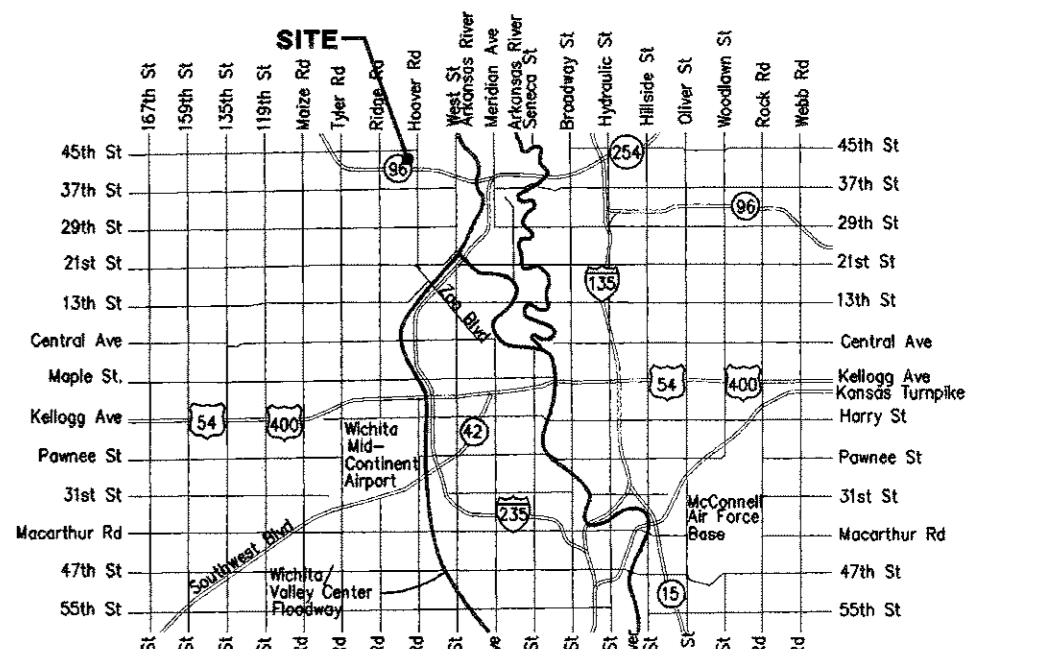
BM #3: Small RR spike in 2nd PP east of NW Corner of SEC. 27, TWP. 26-S, R-1-W. (North side of 45th St. N., west of Hoover St.) Elev. = 1339.57

BM #4: 60d nail in PP at the SE corner of exception on west side of Hoover St., south of 45th St. N. Elev. = 1335.26

Scale: 1" = 200'

## Sheet Index

Title Sheet	1
35' Pavement Detail	2
29' Pavement Detail	3
Sign Detail	4
Miscellaneous Details	5
Entrance Detail	6
Cimarron/Kollmeyer	7-11
Kollmeyer Ct. (Lots 63 through 82, Block A)	12-13
Kollmeyer Ct. (Lots 31 through 39, Block C)	14
Driftwood	15-17
Driftwood Ct.	18
Ridge Port/Kollmeyer	19-21
Kollmeyer Ct. (Lots 36 through 46, Block A)	22
Kollmeyer Ct. (Lots 47 through 56, Block A)	23
Kollmeyer Ct. (Lots 37 through 42, Block B)	24
SWS Line 1	25
SWS Line 2	26
SWS Line 3	27
SWS Line 4	28-32
SWS Lines 4A & 4B	33
SWS Line 4C	34
SWS Line 5	35-36
Std. Type 1A Double Inlet Detail	37
RC City Manhole Detail	38
Standard Manhole Detail	39
Shallow Manhole Detail	40
Ring & Cover Detail	41
Special Yard Inlet Detail	42
Erosion Control/Esmt. Grading Plan	43-46
Erosion Control BMP Details	47-50
Coordinate Sheet	51-52
Street X-Sections	53-71
Copy of Plat	72



## Vicinity Map



Baughman Company, P.A. 315 Ellis St. Wichita, KS 67211 P 316-262-7271 F 316-262-0149  
 ENGINEERING | SURVEYING | PLANNING | LANDSCAPE ARCHITECTURE