

BENCHMARK:
 BM #1: HOOVER AND 45TH ST. NORTH
 - COW BENCHMARK AT NE CORNER OF
 INTERSECTION, 10.20' SSE OF PP,
 58.80' ESE OF PP ON NW CORNER,
 85.50' NE OF GAS LINE MARKER,
 59.00' NORTH OF GAS LINE MARKER,
 28.50' EAST OF CENTERLINE, 14.50'
 NORTH OF CENTERLINE.
 ELEV. = 1335.29 (NGVD 29)

BM #2: Small RR spike in 3rd PP west
 of Hoover St. on the north side of
 45th St. N.
 Elev. = 1337.68

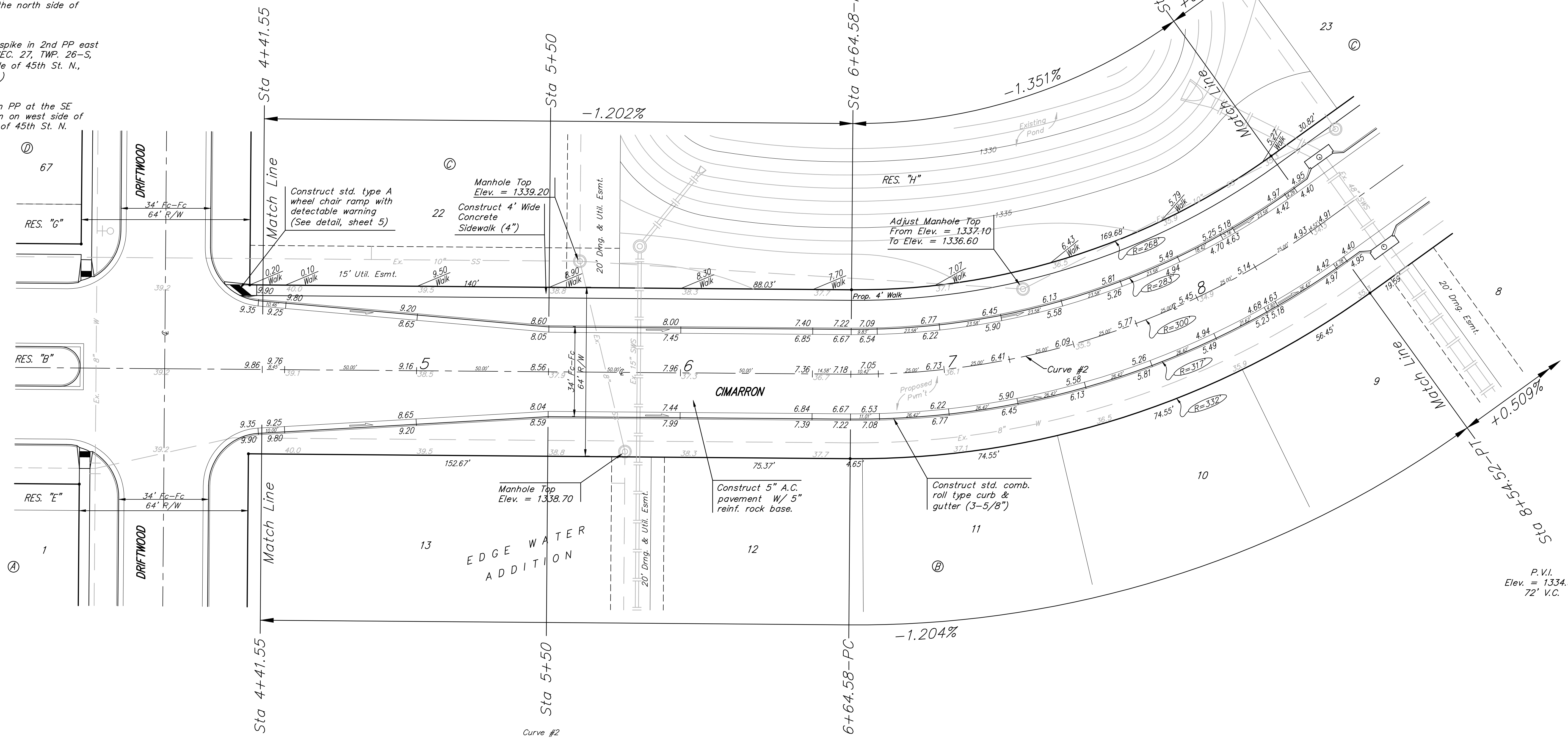
BM #3: Small RR spike in 2nd PP east
 of NW Corner of SEC. 27, TWP. 26-S,
 R-1-W. (North side of 45th St. N.,
 west of Hoover St.)
 Elev. = 1339.57

BM #4: 60d nail in PP at the SE
 corner of exception on west side of
 Hoover St., south of 45th St. N.
 Elev. = 1335.26

P.V.I.
 Elev. = 1334.80
 66' V.C.

P.V.I.
 Elev. = 1337.22
 No V.C.

Scale: 1" = 20'
 • = Iron



Curve #2
 Curve Data Based on Centerline
 Rad. = 300' Delta = 36° 16' 36" Tangent = 98.28'
 Arc = 189.94' L.C. = 186.79' Def/Ft. = 5.72970 Min.

Station	Arc	FACE CHORD LENGTHS		Defl.	T. Defl.
		8' Lt.	8' Rt.		
6+64.58	-	-	-	0'00'00"	0'00'00"
6+75.00	10.42'	9.55'	11.29'	0'59'42"	0'59'42"
7+00.00	25.00'	22.91'	27.08'	2'23'14"	3'22'57"
7+25.00	25.00'	22.91'	27.08'	2'23'14"	5'46'11"
7+50.00	25.00'	22.91'	27.08'	2'23'14"	8'09'26"
7+75.00	25.00'	22.91'	27.08'	2'23'14"	10'32'40"
8+00.00	25.00'	22.91'	27.08'	2'23'14"	12'55'55"
8+25.00	25.00'	22.91'	27.08'	2'23'14"	15'19'09"
8+50.00	25.00'	22.91'	27.08'	2'23'14"	17'42'24"
8+54.52	4.52'	4.14'	4.90'	0'25'54"	18'08'18"

NOTE: ROLL TYPE CURB & GUTTER TO BE CONSTRUCTED ON THE PAVEMENT SHOWN ON THIS SHEET. TOP OF CURB ELEVATIONS ARE GIVEN FOR FULL HEIGHT CURB.

Baughman Company, P.A. 315 Ella St. Wichita, KS 67211 P3162627271 F3162620149
 ENGINEERING | SURVEYING | PLANNING | LANDSCAPE ARCHITECTURE

EDGE WATER ADDITION - PH. I
CIMARRON
 STA 4+41.55 TO STA 8+54.52

PROJECT NUMBER 412-84582 REVISIONS:	DESIGN ATD APPROVED SCALE Noted SHEET 8 OF 72
---	--

EdgeWater\Phase1\Sr2 07-05-E838