

**BENCHMARK:**  
 BM #1: HOOVER AND 45TH ST. NORTH  
 - COW BENCHMARK AT NE CORNER OF  
 INTERSECTION, 10.20' SSE OF PP,  
 58.80' ESE OF PP ON NW CORNER,  
 85.50' NE OF GAS LINE MARKER,  
 59.00' NORTH OF GAS LINE MARKER,  
 28.50' EAST OF CENTERLINE, 14.50'  
 NORTH OF CENTERLINE.  
 ELEV. = 1335.29 (NGVD 29)

BM #2: Small RR spike in 3rd PP west  
 of Hoover St. on the north side of  
 45th St. N.  
 Elev. = 1337.68

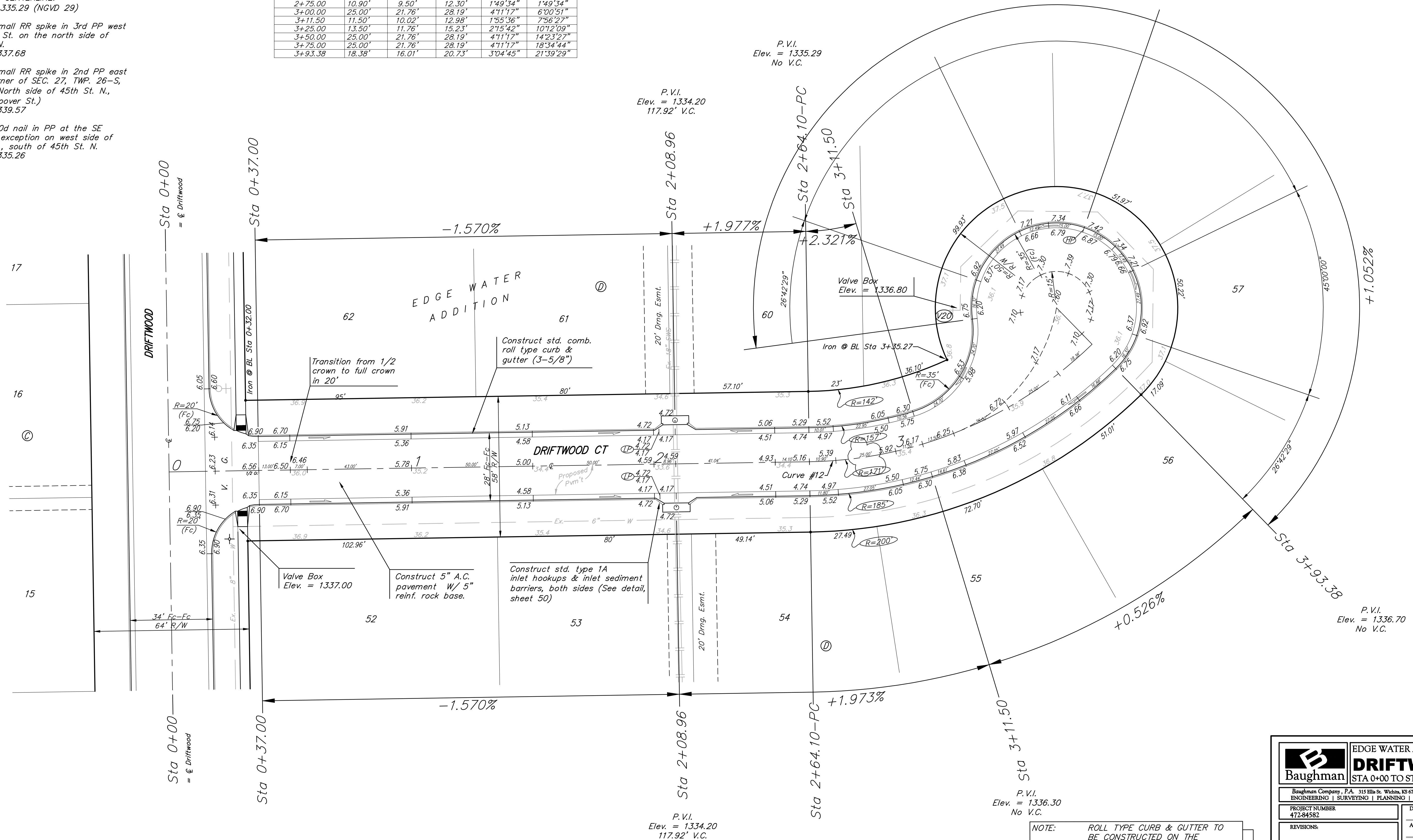
BM #3: Small RR spike in 2nd PP east  
 of NW Corner of SEC. 27, TWP. 26-S,  
 R-1-W. (North side of 45th St. N.,  
 west of Hoover St.)  
 Elev. = 1339.57

BM #4: 60d nail in PP at the SE  
 corner of exception on west side of  
 Hoover St., south of 45th St. N.  
 Elev. = 1335.26

Curve #12  
 Curve Data Based on Centerline

Station	Arc	FACE CHORD LENGTHS		Defl.	T. Defl.
		8' Lt.	8' Rt.		
2+64.10	-	-	-	0'00"00"	0'00"00"
2+75.00	10.90'	9.50'	12.30'	1'49"34"	1'49"34"
3+00.00	25.00'	21.76'	28.19'	4'11"17"	6'00"51"
3+11.50	11.50'	10.02'	12.98'	1'55"36"	7'56"27"
3+25.00	13.50'	11.76'	15.23'	2'15"42"	10'12'09"
3+50.00	25.00'	21.76'	28.19'	4'11"17"	14'23'27"
3+75.00	25.00'	21.76'	28.19'	4'11"17"	18'34'44"
3+93.38	18.38'	16.01'	20.73'	3'04'45"	21'39'29"

Rad. = 171' Delta = 43° 18' 59" Tangent = 67.90'  
 Arc = 129.28' L.C. = 126.22' Def/Ft. = 10.05176 Min.



**Baughman** ENGINEERING | SURVEYING | PLANNING | LANDSCAPE ARCHITECTURE

**EDGE WATER ADDITION - PH. I**  
**DRIFTWOOD CT.**  
 STA 0+00 TO STA 3+93.38

Baughman Company, P.A. 315 Ellis St. Wichita, KS 67211 P 316-262-7271 F 316-262-0149  
 ENGINEERING | SURVEYING | PLANNING | LANDSCAPE ARCHITECTURE

PROJECT NUMBER 412-84582	DESIGN ATD
APPROVED	DATE 01/08
REVISIONS:	SCALE Noted
	SHEET <b>18 OF 72</b>

EdgeWater\Phase1\Sr12 07-05-E838

NOTE: ROLL TYPE CURB & GUTTER TO BE CONSTRUCTED ON THE PAVEMENT SHOWN ON THIS SHEET. TOP OF CURB ELEVATIONS ARE GIVEN FOR FULL HEIGHT CURB.