

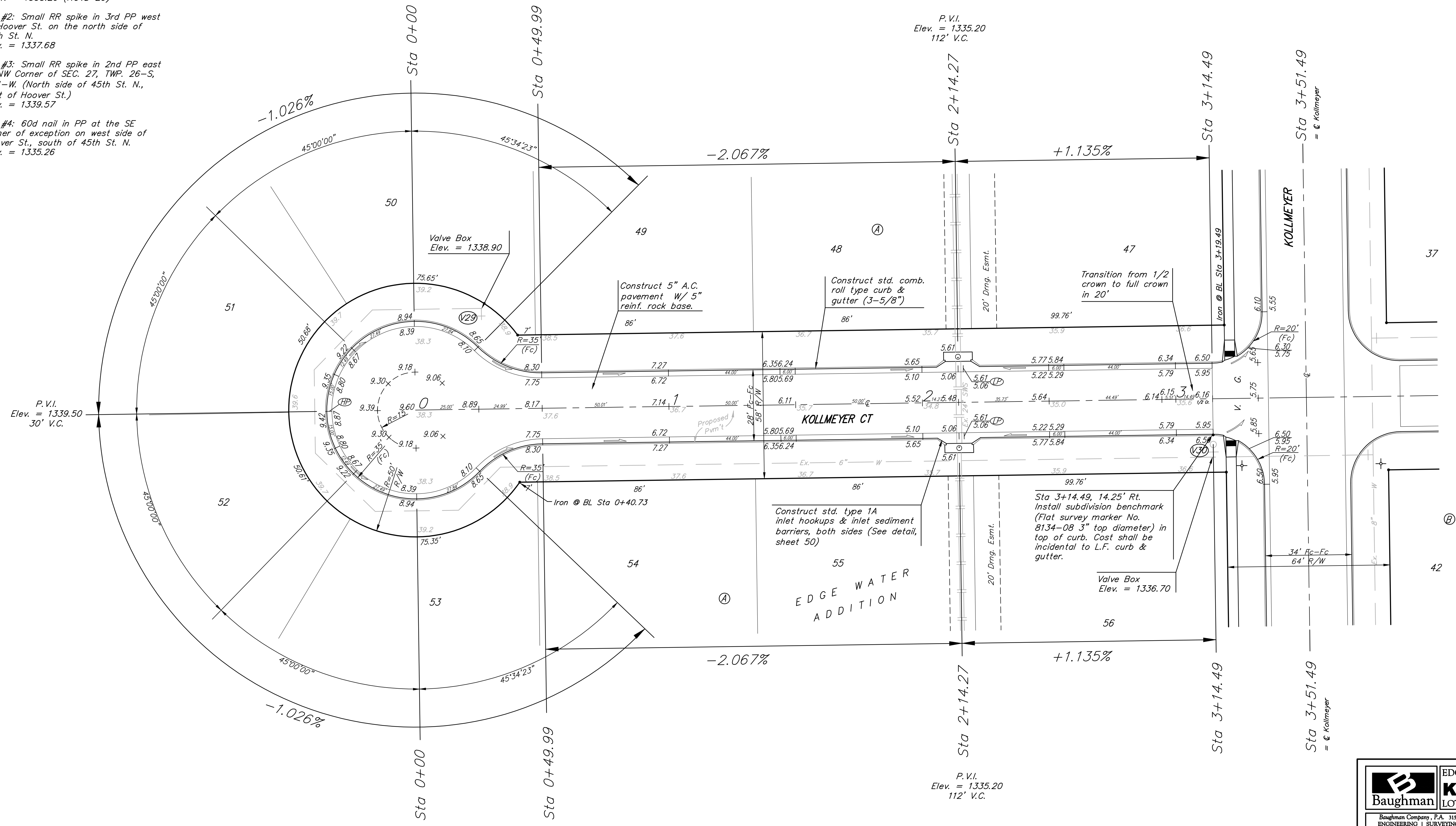
BENCHMARK:
 BM #1: HOOVER AND 45TH ST. NORTH
 - COW BENCHMARK AT NE CORNER OF
 INTERSECTION, 10.20' SSE OF PP,
 58.80' ESE OF PP ON NW CORNER,
 85.50' NE OF GAS LINE MARKER,
 59.00' NORTH OF GAS LINE MARKER,
 28.50' EAST OF CENTERLINE, 14.50'
 NORTH OF CENTERLINE.
 ELEV. = 1335.29 (NGVD 29)

BM #2: Small RR spike in 3rd PP west
 of Hoover St. on the north side of
 45th St. N.
 Elev. = 1337.68

BM #3: Small RR spike in 2nd PP east
 of NW Corner of SEC. 27, TWP. 26-S,
 R-1-W. (North side of 45th St. N.,
 west of Hoover St.)
 Elev. = 1339.57

BM #4: 60d nail in PP at the SE
 corner of exception on west side of
 Hoover St., south of 45th St. N.
 Elev. = 1335.26

Scale: 1" = 20'
 • = Iron



NOTE: ROLL TYPE CURB & GUTTER TO BE CONSTRUCTED ON THE PAVEMENT SHOWN ON THIS SHEET. TOP OF CURB ELEVATIONS ARE GIVEN FOR FULL HEIGHT CURB.

Baughman		EDGE WATER ADDITION - PH. I	
KOLLMAYER CT.		LOTS 47-56, BLOCK A	
Baughman Company, P.A. 315 Ellis St. Wichita, KS 67211 P3162627271 F3162620149			
ENGINEERING SURVEYING PLANNING LANDSCAPE ARCHITECTURE			
PROJECT NUMBER 472-84582	DESIGN ATD	DRAWN TMS	APPROVED DATE 01/08
REVISIONS:	SCALE Noted		SHEET 23 OF 72
EdgeWater\Phase1\Str17		07-05-E838	