

BENCHMARK:
 BM #1: HOOVER AND 45TH ST. NORTH
 - COW BENCHMARK AT NE CORNER OF
 INTERSECTION, 10.20' SSE OF PP,
 58.80' ESE OF PP ON NW CORNER,
 85.50' NE OF GAS LINE MARKER,
 59.00' NORTH OF GAS LINE MARKER,
 28.50' EAST OF CENTERLINE, 14.50'
 NORTH OF CENTERLINE.
 ELEV. = 1335.29 (NGVD 29)

BM #2: Small RR spike in 3rd PP west
 of Hoover St. on the north side of
 45th St. N.
 Elev. = 1337.68

BM #3: Small RR spike in 2nd PP east
 of NW Corner of SEC. 27, TWP. 26-S,
 R-1-W. (North side of 45th St. N.,
 west of Hoover St.)
 Elev. = 1339.57

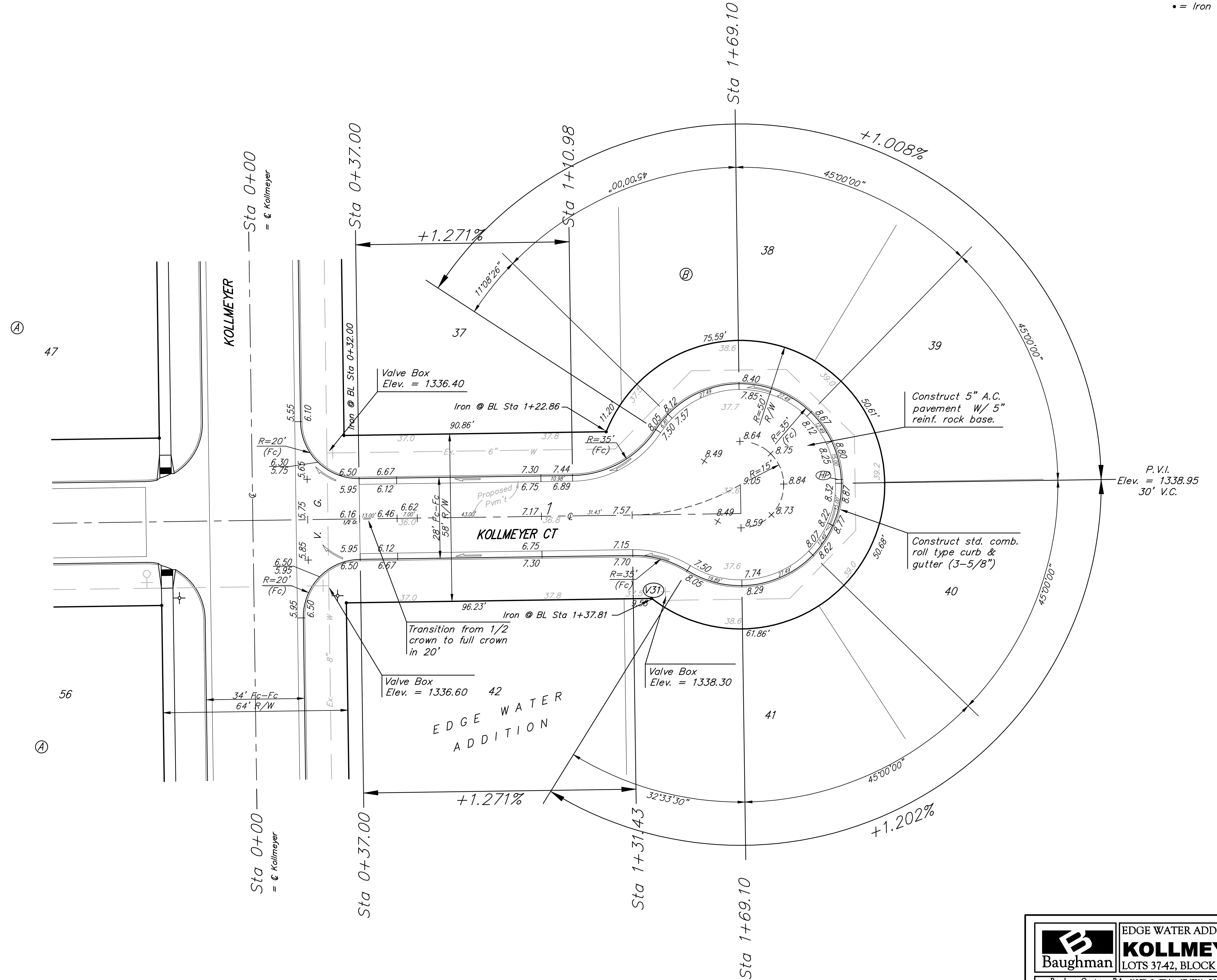
BM #4: 60d nail in PP at the SE
 corner of exception on west side of
 Hoover St., south of 45th St. N.
 Elev. = 1335.26

Scale: 1" = 20'
 • = Iron

WATER VALVE LOCATION TABLE

VALVE NUMBER	STREET	BASILINE STATION	OFFSET DISTANCE	OFFSET DIRECTION
V1	Cimarron	3+78.55	38'	Rt.
V2	Cimarron	9+54.11	26'	Rt.
V3	Cimarron	15+03.49	26'	Rt.
V4	Kollmeyer	15+55.85	26'	Rt.
V5	Kollmeyer	18+98.65	26'	Rt.
V6	Kollmeyer	19+41.02	26'	Rt.
V7	Kollmeyer	19+50.15	26'	Rt.
V8	Kollmeyer	21+52.40	26'	Rt.
V9	Kollmeyer	21+93.17	26'	Rt.
V10	Kollmeyer Ct. (64A-82A)	0+34.13	22.05'	Lt.
V11	Kollmeyer Ct. (64A-82A)	3+29.00	23'	Rt.
V12	Kollmeyer Ct. (31C-39C)	2+62.30	39.73'	Rt.
V13	Driftwood	1+02.23	26'	Lt.
V14	Driftwood	1+16.49	26'	Lt.
V15	Driftwood	2+98.61	26'	Lt.
V16	Driftwood	10+87.71	26'	Lt.
V17	Driftwood	11+44.71	26'	Lt.
V18	Driftwood	12+82.12	26'	Lt.
V19	Driftwood	13+11.69	26'	Lt.
V20	Driftwood Ct.	3+53.54	44.59'	Lt.
V21	Ridge Port	1+48.13	26'	Rt.
V22	Ridge Port	1+63.13	26'	Rt.
V23	Ridge Port	4+02.23	26'	Lt.
V24	Kollmeyer	8+73.04	26.31'	Lt.
V25	Kollmeyer	11+32.81	26'	Lt.
V26	Kollmeyer	11+78.81	26'	Lt.
V27	Kollmeyer Ct. (36A-46A)	0+26.54	39.73'	Lt.
V28	Kollmeyer Ct. (36A-46A)	3+37.98	21.55'	Rt.
V29	Kollmeyer Ct. (47A-56A)	0+26.54	39.73'	Lt.
V30	Kollmeyer Ct. (47A-56A)	3+14.49	23'	Rt.
	Kollmeyer Ct. (37B-42B)	1+42.56	29.73'	Rt.

Paving contractor will be responsible to operate all water valves on the project, in the presence of the inspector, to ensure accessibility to the valves, and that all valves are left in the "ON" position when the project is completed.



NOTE: ROLL TYPE CURB & GUTTER TO BE CONSTRUCTED ON THE PAVEMENT SHOWN ON THIS SHEET. TOP OF CURB ELEVATIONS ARE GIVEN FOR FULL HEIGHT CURB.

Baughman ENGINEERING | SURVEYING | PLANNING | LANDSCAPE ARCHITECTURE

EDGE WATER ADDITION - PH. I
KOLLMMEYER CT.
 LOTS 37-42, BLOCK B

Baughman Company, P.A. 315 Ellis St. Wichita, KS 67211 P 316-262-7271 F 316-262-0149
 ENGINEERING | SURVEYING | PLANNING | LANDSCAPE ARCHITECTURE

PROJECT NUMBER: 412-84582
 DESIGN: ATD
 DRAWN: TMS

APPROVED: [Signature]
 DATE: 01/08

SCALE: Noted
 SHEET: 24 OF 72

EdgeWater\Phase1\Str18 07-05-E838